

## Product datasheet for RC215184

### SPEF1 (NM\_015417) Human Tagged ORF Clone

#### Product data:

Product Type:	Expression Plasmids
Product Name:	SPEF1 (NM_015417) Human Tagged ORF Clone
Tag:	Myc-DDK
Symbol:	SPEF1
Synonyms:	C20orf28; CLAMP; SPEF1A
Mammalian Cell Selection:	Neomycin
Vector:	pCMV6-Entry (PS100001)
E. coli Selection:	Kanamycin (25 ug/mL)
ORF Nucleotide Sequence:	>RC215184 representing NM_015417 Red=Cloning site Blue=ORF Green=Tags(s)

TTTTGTAATACGACTCACTATAGGGCGCCGGGAATTCGTCGACTGGATCCGGTACCGAGGAGATCTGCC  
GCC**CGATCGC**C

ATGGCGAGCAGCGTGGACGAGGAGGCGCTGCACCAGCTGTACCTGTGGGTAGACAACATCCCTCTGTCCC  
GGCCCAAGCGAAACCTCTCCCGGACTTTAGCGATGGAGTCCTTGTTCAGAGGTCATCAAGTTTACTT  
CCCCAAGATGGTGGAGATGCACAATTATGTCCCGCCAACCTCTCCAGCAGAAGCTCAGCAACTGGGT  
CATCTGAACAGGAAGTACTGAAGAGGCTGAACTTTTTCAGTACCGGATGACGTGATGCCAAGATCGCGC  
AGTGCGCCCCAGGCGTGGTGGAGCTGGTCTCATCCCGCTGAGGCAGCGCTGGAGGAGAGGCAGAGGCC  
CAGGAAGCAGGGCGCCGGCTCCTTACAGGAGCTGGCTCCCGAGGATGGCAGTGGCTACATGGATGTGGGT  
GTATCCCAAGAAGGCCCGAGGTGAAGGTGTCCCGGACCCCGAGGAGGGGTGAGCTCAGCTGGGACCGGC  
CGCCGGCGCCTCGGCCTCCAGCGTATAACCGGGCGTTGCAGGGCGACCCAGCTTCGTCCTCCAGATCGC  
TGAAAAGGAGCAGGAGCTGTTGGCCTCTCAAGAGACCGTGCAGGTCTGCAGATGAAGGTAAGGCGCCTG  
GAGCACCTGCTCCAGCTCAAGAAATGTGCGGATCGAAGACCTCTCCCGGCGGCTCCAGCAGGCGGAGCGTA  
AGCAGCGG

**ACGCGT**ACGCGGCCGCTCGAGCAGAACTCATCTCAGAAGAGGATCTGGCAGCAAATGATATCCTGGATT  
ACAAGGATGACGACGATAAGGTTTAA



[View online »](#)

**Protein Sequence:** >RC215184 representing NM\_015417  
 Red=Cloning site Green=Tags(s)

MASSVDEEALHQLYLWVDNIPLSRPKRNL SRDFS DGVLVAEVIKIFYFKMVMEMHNYVPANSLQQKLSNWG  
 HLNRRKVLKRLNFSVPDDVMRKIAQCAPGVVELVLIPLRQRLEERQRRRKQGAGSLQELAPQDGGSGYMDVG  
 VSQKARGEGVDPDQGGQLSWDRPPAPRPPAYNRALQGDP SFVLQIAEKEQELLASQETVQVQLQMKVRRLL  
 EHLLQLKNVRIEDLSRRLQQAERKQR

TRTRPLEQKLISEEDLAANDILDYKDDDDKV

**Chromatograms:** [https://cdn.origene.com/chromatograms/ja1257\\_f08.zip](https://cdn.origene.com/chromatograms/ja1257_f08.zip)

**Restriction Sites:** SgfI-MluI

**Cloning Scheme:**



**ACCN:** NM\_015417

**ORF Size:** 708 bp

**OTI Disclaimer:** The molecular sequence of this clone aligns with the gene accession number as a point of reference only. However, individual transcript sequences of the same gene can differ through naturally occurring variations (e.g. polymorphisms), each with its own valid existence. This clone is substantially in agreement with the reference, but a complete review of all prevailing variants is recommended prior to use. [More info](#)

**OTI Annotation:** This clone was engineered to express the complete ORF with an expression tag. Expression varies depending on the nature of the gene.

**Components:** The ORF clone is ion-exchange column purified and shipped in a 2D barcoded Matrix tube containing 10ug of transfection-ready, dried plasmid DNA (reconstitute with 100 ul of water).

**Reconstitution Method:**

1. Centrifuge at 5,000xg for 5min.
2. Carefully open the tube and add 100ul of sterile water to dissolve the DNA.
3. Close the tube and incubate for 10 minutes at room temperature.
4. Briefly vortex the tube and then do a quick spin (less than 5000xg) to concentrate the liquid at the bottom.
5. Store the suspended plasmid at -20°C. The DNA is stable for at least one year from date of shipping when stored at -20°C.

**RefSeq:** [NM\\_015417.5](#)

**RefSeq Size:** 1597 bp

**RefSeq ORF:** 711 bp

**Locus ID:** 25876

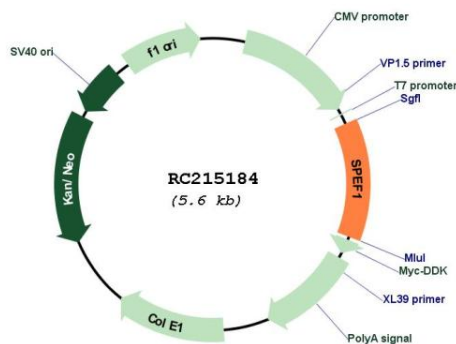
**UniProt ID:** [Q9Y4P9](#)

**Cytogenetics:** 20p13

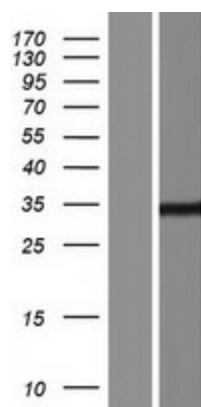
**MW:** 26.8 kDa

**Gene Summary:** Microtubule-associated protein involved in the stabilization of microtubules along the axis of migration during radial intercalation. Promotes the establishment and stabilization of an axis of microtubules required for the active migration of cells into the outer epithelium (By similarity). Microtubule-associated protein that promotes microtubule bundling and stabilizes microtubules against depolymerization in response to cold shock (By similarity). [UniProtKB/Swiss-Prot Function]

### Product images:



Circular map for RC215184



Western blot validation of overexpression lysate (Cat# [LY414579]) using anti-DDK antibody (Cat# [TA50011-100]). Left: Cell lysates from untransfected HEK293T cells; Right: Cell lysates from HEK293T cells transfected with RC215184 using transfection reagent MegaTran 2.0 (Cat# [TT210002]).