

Product datasheet for RC215172

HNT (NTM) (NM_016522) Human Tagged ORF Clone

Product data:

Product Type:	Expression Plasmids
Product Name:	HNT (NTM) (NM_016522) Human Tagged ORF Clone
Tag:	Myc-DDK
Symbol:	HNT
Synonyms:	CEPU-1; HNT; IGLON2; NTRI
Mammalian Cell Selection:	Neomycin
Vector:	pCMV6-Entry (PS100001)
E. coli Selection:	Kanamycin (25 ug/mL)
ORF Nucleotide Sequence:	>RC215172 representing NM_016522 Red=Cloning site Blue=ORF Green=Tags(s)

TTTTGTAATACGACTCACTATAGGGCGGCCGGAATTCGTCGACTGGATCCGGTACCGAGGAGATCTGCC
GCC**CGATCGCC**

ATGGGGTCTGTGGGTACCTGTTCTGCCCTGGAAGTGCCTCGTGGTCTGTCTCTCAGGCTGCTGTTCC
TTGTACCCACAGGAGTGCCCGTGCAGCGGAGATGCCACCTCCCCAAAGCTATGGACAACGTGACGGT
CCGGCAGGGGAGAGCGCCACCCTCAGGTGCACTATTGACAACCGGGTCACCCGGTGGCTGGCTAAAC
CGCAGCACCATCCTCTATGCTGGGAATGACAAGTGGTGCCTGGATCCTCGCGTGGTCTTCTGAGCAACA
CCCAAACGCAGTACAGCATCGAGATCCAGAACGTGGATGTGTATGACGAGGGCCCTTACACCTGCTCGGT
GCAGACAGACAACCACCCAAAGACCTCTAGGGTCCACCTCATTGTGCAAGTATCTCCAAAATTGTAGAG
ATTTCTTCAGATATCTCCATTAATGAAGGGAACAATATTAGCCTCACCTGCATAGCAACTGGTAGACCAG
AGCCTACGGTTACTTGGAGACACATCTCTCCAAAGCGGTTGGCTTTGTGAGTGAAGACGAATACTTGGAA
AATTCAGGGCATCACCCGGGAGCAGTACGGGGACTACGAGTGCAGTGCCTCCAATGACGTGGCCGCGCCC
GTGGTACGGAGAGTAAAGGTCACCGTGAACATCCACCATACATTTGAGAAGCCAAGGGTACAGGTGTCC
CCGTGGGACAAAAGGGGACACTGCAGTGTGAAGCCTCAGCAGTCCCCTCAGCAGAATTCAGTGGTACAA
GGATGACAAAAGACTGATTGAAGGAAAGAAAGGGTAAAAGTGGAAAACAGACCTTCTCTCAAATCTC
ATCTTTCAATGTCTCTGAACATGACTATGGAACTACACTTGGTGGCCTCCAACAAGCTGGGCCACA
CCAATGCCAGCATCATGCTATTTGGTCCAGGCCCGTCCAGGAGGTGAGCAACGGCACGTGAGGAGGGC
AGGCTGCGTCTGGCTGCTGCCTCTTCTGGTCTTGACCTGCTTCTCAAATTT

ACGCGTACGCGGCCGCTCGAGCAGAACTCATCTCAGAAGAGGATCTGGCAGCAAATGATATCCTGGATT
ACAAGGATGACGACGATAAGGTTTAA



[View online »](#)

Protein Sequence: >RC215172 representing NM_016522
Red=Cloning site Green=Tags(s)

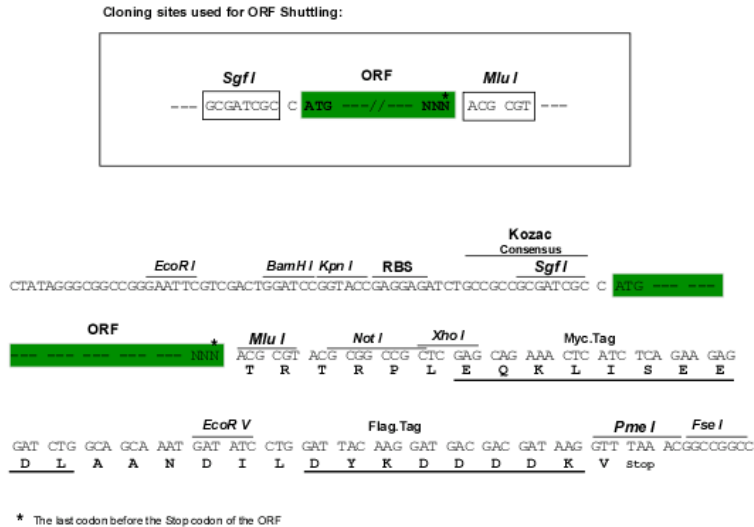
MGVCGYLFLPWKCLVVVSLRLLFLVPTGVPVRSGDATFPKAMDNVTVRQGESATLRCTIDNRVTRVAWLN
 RSTILYAGNDKWCLDPRVLLSNTQTQYSIEIQNVVYDEGPYTCVQTDNHPKTSRVHLIVQVSPKIVE
 ISSDISINEGNNISLTCIATGRPEPTVTRHISPKAVGFVSEDEYLEIQGITREQSGDYECASNDVAAP
 VVRRVKVTVNYPPYISEAKGTGVPVQKGLQCEASAVPSAEFQWYKDDKRLIEGKKGVKVENRPFLLSKL
 IFFNVSEHDYGNVTCVASNKLGHNASIMLFGPGAVSEVSNGTSTRRAGCVWLLPLLVLHLLLLKF

TRTRPLEQKLISEEDLAANDILDYKDDDDKV

Chromatograms: https://cdn.origene.com/chromatograms/mk6048_h05.zip

Restriction Sites: SgfI-MluI

Cloning Scheme:



ACCN: NM_016522

ORF Size: 1032 bp

OTI Disclaimer: The molecular sequence of this clone aligns with the gene accession number as a point of reference only. However, individual transcript sequences of the same gene can differ through naturally occurring variations (e.g. polymorphisms), each with its own valid existence. This clone is substantially in agreement with the reference, but a complete review of all prevailing variants is recommended prior to use. [More info](#)

OTI Annotation: This clone was engineered to express the complete ORF with an expression tag. Expression varies depending on the nature of the gene.

Components: The ORF clone is ion-exchange column purified and shipped in a 2D barcoded Matrix tube containing 10ug of transfection-ready, dried plasmid DNA (reconstitute with 100 ul of water).

Reconstitution Method:

1. Centrifuge at 5,000xg for 5min.
2. Carefully open the tube and add 100ul of sterile water to dissolve the DNA.
3. Close the tube and incubate for 10 minutes at room temperature.
4. Briefly vortex the tube and then do a quick spin (less than 5000xg) to concentrate the liquid at the bottom.
5. Store the suspended plasmid at -20°C. The DNA is stable for at least one year from date of shipping when stored at -20°C.

RefSeq: [NM_016522.2](#), [NP_057606.1](#)

RefSeq Size: 3381 bp

RefSeq ORF: 1035 bp

Locus ID: 50863

UniProt ID: [Q9P121](#)

Cytogenetics: 11q25

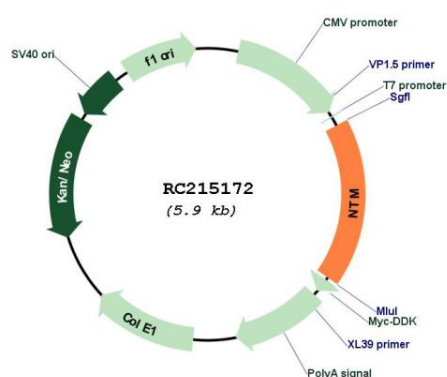
Domains: ig

Protein Families: Transmembrane

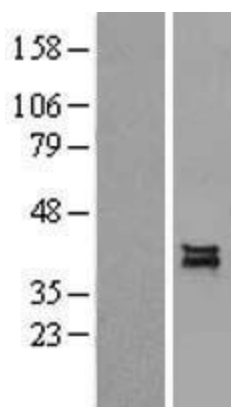
MW: 37.8 kDa

Gene Summary: This gene encodes a member of the IgLON (LAMP, OBCAM, Ntm) family of immunoglobulin (Ig) domain-containing glycosylphosphatidylinositol (GPI)-anchored cell adhesion molecules. The encoded protein may promote neurite outgrowth and adhesion via a homophilic mechanism. This gene is closely linked to a related family member, opioid binding protein/cell adhesion molecule-like (OPCML), on chromosome 11. Multiple transcript variants encoding different isoforms have been found for this gene. [provided by RefSeq, Jan 2009]

Product images:



Circular map for RC215172



Western blot validation of overexpression lysate (Cat# [LY402567]) using anti-DDK antibody (Cat# [TA50011-100]). Left: Cell lysates from untransfected HEK293T cells; Right: Cell lysates from HEK293T cells transfected with RC215172 using transfection reagent MegaTran 2.0 (Cat# [TT210002]).