

Product datasheet for **RC215170**

Carboxypeptidase Z (CPZ) (NM_003652) Human Tagged ORF Clone

Product data:

Product Type:	Expression Plasmids
Product Name:	Carboxypeptidase Z (CPZ) (NM_003652) Human Tagged ORF Clone
Tag:	Myc-DDK
Symbol:	Carboxypeptidase Z
Mammalian Cell Selection:	Neomycin
Vector:	pCMV6-Entry (PS100001)
E. coli Selection:	Kanamycin (25 ug/mL)



[View online »](#)

ORF Nucleotide
Sequence:

>RC215170 representing NM_003652
Red=Cloning site Blue=ORF Green=Tags(s)

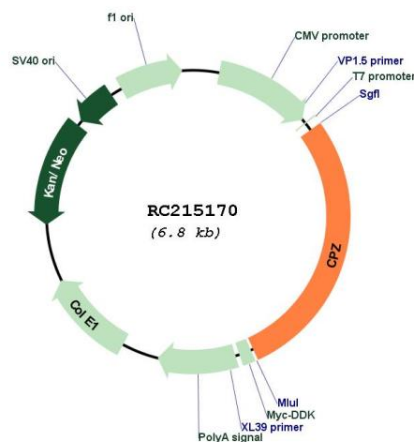
TTTTGTAATACGACTCACTATAGGGCGGCCGGGAATTCGTCGACTGGATCCGGTACCGAGGAGATCTGCC
GCCGCGATCGCC

ATGCCGCCCCCGCCCGCTGCTCCTTACAGTCTGGTCTGCGCCGCTGCCCGCCGGGTGCGAGT
TTGAGCGGAACCCGCCCCACCTGCGTGGACCTGCAGCTCAGGACCTGCAGCGATGCCGCTACAACCA
CACCACCTTCCCCAACCTGCTTCAGCACCGGTCTGGGAGGTGGTGGAGGCCAGCTCCGAGTACATCCTG
CTGAGCGTTTACACCAGCTCCTGGAAGGCCAGTGAACCCGGACCTGCGGCTGTGGGCTGTGCTGTGC
TGGCCCCCGGTGTGAGGGCGGCTGGGTGCGCAGACCCTGCCGGCACATCTGCGAGGGCTGCGGGAGGT
CTGCCAGCCGCCTTCGACGCCATTGACATGGCCTGGCCCTACTTCTTGACTGCCACCGCTACTTCAGC
AGAGAGGACGAGGGCTGCTATGACCCGCTGGAGAAGCTTCGGGGAGGCCTGGAGGCTGACGAGGCACTGC
CCTCAGGGCTGCCGCCACCTTCATCCGCTTCAGCCACCACTCCTACGCCAGATGGTGCCTGTGCTGAG
GCGGACGGCCTCCGCTGTGCCACGTGGCCAGGACCTACAGCATCGGGCGCAGTTCGACGGCAGGGAG
CTGCTGGTTCATCGAGTTCCTCAGCCGCCCGGCCAGCAGGAGCTGATGGAGCCCGAGGTGAAGCTCATCG
GCAACATTCATGGCAACGAGGTGGCGGGCCGGGAGATGCTCATCTACCTAGCCCAGTACCTGTGCTCTGA
GTACCTGCTTGGTAACCCCCGCATCCAGCGCCTGCTCAACACCACCCGCATCCACCTGCTGCCCTCCATG
AACCTGACGGCTATGAGGTGGCAGCTGCCGAGGTGCCGGCTACAACGGGTGGACGAGCGGGAGGCAGA
ACGCGCAGAACCTGGATCTGAACCGAAATTTCCCGACCTGACGTCCGAGTACTACCGGCTGGCGGAGAC
CCGCGGCGCACGACGACACATCCCCATCCCCAGCACTACTGGTGGGTAAGGTGGCCCCGGAGACA
AAGGCAATCATGAAGTGGATGCAGACCATACCTTTGTGCTCTCAGCCAGCCTTCATGGGGCGACCTGG
TGGTGTCTTACCCCTTCGACTTCTCCAAGCACCCAGGAGGAGAAGATGTTTTCTCCACGCCCGACGA
GAAGATGTTCAAGCTGCTGTCCAGAGCCTACGCTGATGTCCACCCCATGATGATGGACAGGTCCGAGAAT
AGGTGTGGAGGCAATTTCTGAAGAGGGGAGCATCATCAACGGGGCAGACTGGTACAGTTTACGGGAG
GCATGTCCGACTTCAACTACCTGCACACCAACTGCTTTGAGATCACGGTAGAGCTGGGCTGTGTGAAGTT
CCCCCGGAGGAGCCCTGTACACACTCTGGCAGCACAACAAGGAGTCACTCCTGAATTTCTGAGAGACG
GTGCACCGGGGCATCAAAGGTGTGGTGACAGATAAATTCGGCAAGCCAGTCAAAAACGCCCGGATCTCAG
TCAAAGGCATTCGCCACGACATCACCACAGCCCCAGATGGTACTACTGGAGACTGCTGCCCCAGGTAT
CCACATTGTATTGCCCAAGCCCTGGTACGCCAAAGTCAAGAAAGTCAATCATCCCCGCCCGGATG
AAGAGGGCTGGCGTGTGACTTATTCTGCAACCTCTGGGGATGGGACCAAGAAGTTTATTTCATGGGC
TGGGAGGACTGGGCCCCACGACCCGCTGGGAGGTGCCAGCTCTTTGGGGAGGCCACGGAGCCCGACCC
GCTCCGGGCGCGCAGGACGCCCTCGGCCAGGGAGTAAGCCCTGGTGGTGGTCTACTTACATCGCTG
AGCACCCACAGGCCACGCTGGCTGCTCAAGTAC

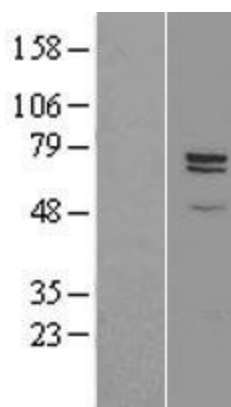
ACGCGTACGCGGCCGCTCGAGCAGAACTCATCTCAGAAGAGGATCTGGCAGCAATGATATCCTGGATT
ACAAGGATGACGACGATAAGGTTTAA

Components:	The ORF clone is ion-exchange column purified and shipped in a 2D barcoded Matrix tube containing 10ug of transfection-ready, dried plasmid DNA (reconstitute with 100 ul of water).
Reconstitution Method:	<ol style="list-style-type: none"> 1. Centrifuge at 5,000xg for 5min. 2. Carefully open the tube and add 100ul of sterile water to dissolve the DNA. 3. Close the tube and incubate for 10 minutes at room temperature. 4. Briefly vortex the tube and then do a quick spin (less than 5000xg) to concentrate the liquid at the bottom. 5. Store the suspended plasmid at -20°C. The DNA is stable for at least one year from date of shipping when stored at -20°C.
RefSeq:	<u>NM_003652.3</u>
RefSeq Size:	2259 bp
RefSeq ORF:	1926 bp
Locus ID:	8532
UniProt ID:	<u>Q66K79</u>
Cytogenetics:	4p16.1
Domains:	FRI, Zn_carbOpept
Protein Families:	Druggable Genome, Protease, Secreted Protein
MW:	72.5 kDa
Gene Summary:	This gene encodes a member of the metallo-carboxypeptidase family. This enzyme displays carboxypeptidase activity towards substrates with basic C-terminal residues. It is most active at neutral pH and is inhibited by active site-directed inhibitors of metallo-carboxypeptidases. Alternative splicing in the coding region results in multiple transcript variants encoding different isoforms. [provided by RefSeq, Jul 2008]

Product images:



Circular map for RC215170



Western blot validation of overexpression lysate (Cat# [LY401209]) using anti-DDK antibody (Cat# [TA50011-100]). Left: Cell lysates from untransfected HEK293T cells; Right: Cell lysates from HEK293T cells transfected with RC215170 using transfection reagent MegaTran 2.0 (Cat# [TT210002]).