

## Product datasheet for RC215166

### ARHGEF5 (NM\_005435) Human Tagged ORF Clone

#### Product data:

Product Type:	Expression Plasmids
Product Name:	ARHGEF5 (NM_005435) Human Tagged ORF Clone
Tag:	Myc-DDK
Symbol:	ARHGEF5
Synonyms:	GEF5; P60; TIM; TIM1
Mammalian Cell Selection:	Neomycin
Vector:	pCMV6-Entry (PS100001)
E. coli Selection:	Kanamycin (25 ug/mL)
ORF Nucleotide Sequence:	>RC215166 representing NM_005435 Red=Cloning site Blue=ORF Green=Tags(s)

TTTTGTAATACGACTCACTATAGGGCGGCCGGAATTCGTCGACTGGATCCGGTACCGAGGAGATCTGCC  
GCC**CGATCGCC**

ATGGAGGCTGAGGAGGCCAGCGTGGAGCCTCTCCTCCCATCTCTGCCATAGAGGAATTCAGCATTATCC  
CTGAGGCTCCCATGAGGAGCAGCCAGGTCTCTGCCTTGGGGCTTGAAGCTCAAGAAGATGAGGACCCATC  
CTATAAGTGGAGAGGAAACACAGACTCTCAGCAACTCAGCAGAGTGAGTTAAGGGATGTGTGTGACTAT  
GCGATTGAGACGATGCCCTCTTTCCCAAGGAAGGTTCTGCAGATGTGGAGCCCAATCAGGAAAGCCTTG  
TGGCTGAGGCCTGTGACTCTCCGAACTGGGAGGCAGTACCCAGAGCCTAGCAGGCCACAAGCAAG  
GACTCTAGCTCCCCAGAGCTCTGGGCCTGCCCATTCAGAGTGAGCATCTAGACATGGCCCCATTTTCC  
AGTGACCTGGGAAGCAAGAAGAGGAGGTGGAATTTGGCCAGGACTTACTTCTTTGACATTGGGATCTG  
GACAGGCAGAAGAAGAAGAGGAAACCTCTTCAGATAAECTTGGTCAGACCAGATATTATTCTCCCTGCGA  
AGAGCATCCTGCAGAGACCAACCAGAAATGAAGGCTCTGAAAGTGGGACTATCAGGCAGGGGGAAGAGCTG  
CCACCTGAGGAGCTGCAGGAAAGTCAAGGGCTCTTGCATCCCCAGGAGGTCCAAGTTCTGGAGGAGCAGG  
GACAGCAGGAAGCAGGATTTCCGGGGGAAGGAAGTCTGAGGGAGGATGTTTGTCCGATGGGCTATTAGG  
GGAGGAACAGATGATAGAGCAGGTTAATGATGAAAAGGGAGAACAAGCAAAAACAGGAACAGGTACAA  
GATGTGATGCTTGGGAGACAAGGAGAAAGAAATGGGGCTCACTGGGAGCCAGAGGCTGAATGACGGTG  
AGTGGGAGCAGGAGGATATGGAGAGGAAGGCTCAGGGTCCAGGGAGGTCCAGAACAGGGAGAAGAGAGGAA  
GAGGGAGCTGCAGGTGCCAGAAGAGAATAGGGCGGACTCTCAGGACGAAAAGAGTCAAACCTTTTTGGGA  
AAATCAGAGGAAGTAACTGGAAAGCAAGAAGATCATGGTATAAAGGAGAAAGGGGTGCCAGTCAGCGGGC  
AGGAGGCGAAAGAGCCAGAGAGTTGGGATGGGGCAGGCTGGGGCAGTGGGAAGAGCGAGGAGCAGGGA  
AGAGGAGAATGAGCATCATGGGCCTTCAATGCCCGCTCTGATAGCCCTGAGGACTCTCCTCACTGTGAC  
CTGTTTCCAGGTGCCTCATATCTCATGACTCAGATTCCCGGACTCAGACAGAGTCCAGGGCTGAGGAAC  
TGTCCTCCCGCAGCTCTGTCTCCCTCGCTAGAGCCCATCAGGTGCTCTCACCAGCCATTTCTCTACTGGG  
CTCCTTTTTGACTGAGGAGTCACCTGACAAGGAAATAGATCAAAAACAGCCAGCAAGAGGAATCCAGGCTG



[View online >](#)

AGGAAGGGAACAGTGTCCAGCCAAGGGACTGAGGTGGTCTTTGCCAGTGCATCTGTGACTCCTCCAAGGA  
 CACCAGATTACAGCTCCTCCCAGTCTGTGTAAGCCTACCCCATCACACCTGCCTCGGTATCTGCCAGGCC  
 CCCAGTTGCCCTTTCCAGGAGGGAAACCTTTGTGCTGCACGTGTCCAGAACTGCCAGTGCCCTCTC  
 TCAATGGATGACCCATCTCCCTGTGGGACTTCTGAGATGTGCCCGGTGCCCTCTATGGCTTCCCCTCCA  
 CCGGGACCAGCCCTCCGAGGCCCCAGCCAACCTCCACAGGCACCTCCAGCACTTACGGAGTGACTCCTT  
 CCCTGGTTCTCACAGGACAGAGCAGACTCCAGACCTGGTGGGAATGTTGCTTTCTACTCCCAGTCCAG  
 CTGGCCCCAGAGGCCCCCAAACCTGCCATCTACAGCTCTGTGACCCCAAGAAGGGACAGAAGGAGTGTA  
 GGGACTACAGCACCGTTTCAGCATCCCCTACTGCCTTATCCACGCTGAAGCAGGACTCTCAAGAATCCAT  
 CTCAAATCTAGAGAGACCCAGCAGTCTCCAGCATCCAGCCCTGGGTCTCCCCACATAATCCAGCCTTT  
 GCCACAGAGTCTCCCGCTACGGTTCTTCCCCTCCTTTGTCTCCATGGAGGATGTGAGGATCCACGAAC  
 CTCTGCCCTCCTCCCCACAGAGGAGGGACACCCATCCCTCCGTGGTGGAGACAGATGGCCATGCTCG  
 TGTAGTGGTTCCACGCTGAAGCAGCATAGCCACCCTCTCCATTGGCCCTAGGTTACAGGCTGCATGCC  
 CCCCATAAAGGCCACTTCCCAAGCCTCTGACCCCGTGTGGCCAGGCAGCACCAGCTCTGCCATCTA  
 CCCCAGACAGCTCCACCATGCTCAGGCCACCCAGGTGGAGATAACAAGCCGCTACCCCTACCCC  
 TGATTTGCCGAGCCCCACCTTCTCCATTTCTGCTCCTGGTAGCTCAAGGATCTACAGGCCTCTACCC  
 CCACTACCATCATAGACCCTCCACCGAACCCCAATGGCCCCAAAGTCCAGGGGGAGGAGCAGGA  
 GCACTCGGGGAGGACATATGAACTCAGGGGGTCAATGCCAAAACAAGACCTGCTTGTCAAGACTGGACAGT  
 CCCCCTCCTGCCTCTGTGAGCAGCCTCCTGGCCCCGGCCACAGCTAGATCAACAGAGTCTTTCACT  
 TCCACCAGCAGGAGTAAGAGCGAAGTGTCCCCTGGCATGGCTTTCAGCAACATGACAACTTCTATGCC  
 CCTTCCCCTACCACTCCCTGGACTCCGGAGCTCCAGGGACCCACCTTAAGGATGAAGCAGGGGTCTC  
 AGAACACCCTGAGGCCCTGCGAGAGAACCTTTGAGAAGGACAACCCCTCAGCAAGGAGCCAGTGGCCCA  
 GGGAGGTACCTGTGGGCCAAGCAAGGCAGCCAGAAAAACCCAGCCATCTGCACCTGGAGAAGCCGTCCA  
 GTGGCCCCACAGCGGGACTCAGGGAGGCCACCAGGGGACAGCAGTGGACAGGCTGTGGCTCTAGTGA  
 GGGGGCCAAACAAGCACAAGGGCTGGAGCCGGCAGGGCCTGCGCAGACCTTCCATCTTGCCTGAGGGTCT  
 TCAGATCAAGAGGTCCAGCCGTGGAGAAAATCCGGGACCCTCAGACACTGTTGTTTTTCGGGAGAAAA  
 AACCAAAGGAGGTGATGGGAGGCTTTTCAAGACGCTGCTCCAACTCATCAACTCCTCCCAGCTGCTTTA  
 CCAGGAGTATAGTGATGTTGCTGAATAAGGAGATCCAGAGCCAGCAGCGGCTGGAGAGCTGTCCGAG  
 ACACCCGGGCTAGCTCTCCGCGCAGCCTCGGAAGGCCCTGGTCTCCTCCGAGTGTACCTGCAGCGGC  
 TCTCCATGGCCTCCAGCGCTCCTCTGGCAGGAAATCCCGTGGTGGCAACAGCACCCTGCTGCTCTC  
 CATGACCCATGAAGACAAAAGCTGCAAGAGGTCAAATTTGAGCTGATTGTGTGAGAGCCCTCTACCTG  
 CGCAGTCTAAACATAGCTGTGGATCATTCCAACCTTCAACTTACTCCGGGCCACACTTCCAACCAGG  
 AGCACCATGGCTCTTCTCGTTTACAGGATGTGCGAGACGTACAGCGCCACGTTCTTTTCCAGACCTGGA  
 AGAGAACCTTTGAGAACAATATCTTCTCCTTCCAAGTATGTGACGTAGTCTGAACCACGCCCCAGACTTC  
 CGCCGGGTCTACCTGCCTTATGTACCAACCAGACCTATCAGGAACGCACCTTCCAGAGCCTGATGAATA  
 GCAACAGCAATTTCCGGGAGGTCTTGGAGAAGCTGGAGAGCGACCCCGTCTGCCAGCGCCTTTCCCTCAA  
 GTCCTTTCTGATTCTGCCTTCCAACGCATCACCCGCCTCAAAGTGTGCTCCAGAACATTTGAAGAGA  
 ACACAGCCTGGCTCCTCGGAGGAGGCAGAGGCCACGAAGGCACACCACGCCCTGGAGCAGCTGATCCGGG  
 ACTGCAATAACAATGTCCAGAGTATGCGACGGACAGAGGAACTAATCTACCTGAGCCAGAAGATTGAGTT  
 TGAGTGCAAAAATATCCCGCTCATTTCTCAGTCACGCTGGTGGTGAAGTGGGGAGCTGACAGCCTTG  
 GAGTTGAGTCTTCCCAGGGCTACGAAGGAAGCTGAACACGCGTCCAGTCCACCTGCACCTCTTCAATG  
 ACTGTCTGCTGCTGCTCGGCCCGAGAGGGTAGCCGATTCTGGTATTTGACCATGCTCCTTCTCCTC  
 CATTCCGGGGGAAAAGTGTGAAATGAAGCTACATGGACCTCACAAAAACCTGTTCCGACTCTTTCTGCGG  
 CAGAACACTCAGGGCGCCAGGCCGAGTTCTCTTCCGCACGGAGACTCAAAGTGAAGGCTTCCGTGGA  
 TCTCAGCCTTGGCCATGCCAAGAGAGGAGTTGGACCTTCTGGAGTGTACAACCTCCCCCAGGTACAGTG  
 CCTTCGAGCCTACAAGCCCCGAGAGAATGATGAATTGGCACTGGAGAAAGCCGACGTGGTGTGAGT  
 CAGCAGAGCAGTGACGGCTGGCTGGAGGGCTGAGGCTCTCAGACGGGGAGCGAGGCTGGTTTCTGTGC  
 AGCAGGTGGAGTTCATTTCCAACCCAGAGTCCGTGCACAGAACCTGAAGGAAGCTCATCGAGTCAAGAC  
 TGCCAAACTACAGCTGGTGGAAACAGCAAGCC

AGCGGACCGACGCGTACGCGGCCGCTCGAGCAGAAAACCTCATCTCAGAAGAGGATCTGGCAGCAAATGATATCC  
 TGGATTACAAGGATGACGACGATAAGGTTTAA

**Protein Sequence:** >RC215166 representing NM\_005435  
 Red=Cloning site Green=Tags(s)

```

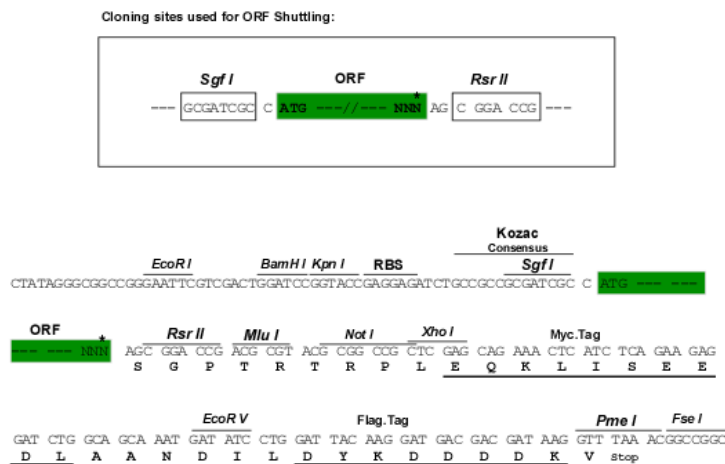
MEAEAAQRGASPPISAIIEEFIIPEAPMRSSQVSALGLEAQEDEDPSYKWREHRLSATQQSELRDVCDY
AIETMPSFPKEGSADVEPNQESLVAEACDTPEHWEAVPQSLAGRQARTLAPPELWACPIQSEHLDMAFFS
SDLGSEEEVEFWPGLTSLTLGSGQAEIEEETSSDMSGQTRYRSPCEEHPAETNQESESGTIRQGEEL
PPEELQESQGLLHPQEVQVLEEQQQAEAGFRGEGTLREDVCADGLLGEEQMIQVNDKGEQKQKQEQVQ
DVMLGRQGERMGLTGEPEGLNDGEWEQEDMERKAQGGGPEQGEERKRELQVPEENRADSQDEKSTFLG
KSEEVTKQEDHGIKEKGVPSVSGQEAKEPESWDGGRLGAVGRARSREENEHHPGSPAL IAPEDSPHCD
LFPGASYLMTQIPGTQTESRAEELSPAALSPSLEPIRCSHQPI SLLGSFLTEESPDKEIDQNSQQEESRL
RKGTVSSQGTEVVFASASVTPRTPDSAPPSPAEAYIPASVSARPPVAFPRRETS CAARAPETASAPL
SMDDPSPCGTSEMCPAALYGFSTGTSPRPPANSTGTVQHLRSDSFPGSHRTEQTPDLVGM LLSYSHSE
LPQRPPKPAIYSSVTPRRDRSRDYSTVSASPTALSTLKQDSQESISNLERPSSPPIQPWVSPHNP AF
ATESPAYGSSPSFVSMEDVRIHEPLPPPPQRRDTHPSVVETDGHARVVVPTLQKSHPPPLALGSLHA
PHKGPLQASDPAVARQHRPLPSTPDSSHHAQATPRWRYNKLPPTPDLQPHLPPI SAPGSSRIYRPLP
PLPIIDPTEPPPLPKSRGRSRTRGGHMNSGGHAKTRPACQDWTVPLPASAGRTSWPPATARSTESFT
STRSKSEVSPGMAFSNMTNFLCPSSPTTPWTPPELQGPTSKDEAGVSEHPEAPAREPLRRTTPQQGASGP
GRSPVQGARQPEKPSHLHLEKASSWPHRRDSGRPPGDSSGQAVAPSEGANKHKGWSRQGLRRPSILPEGS
SDSRGPAVEKHGKPSDTVVFREKKPKVEMGGFSRRCSKLINSSQLLYQEYSDVVLNKEIQSQQRLESLS E
TPGSSPRQPRKALVSSESYLQRLSMASGSLWQEI PVVRNSTVLLSMTHEDQKLQEVK FELIVSEASYL
RSLNIAVDHFQLSTSLRATLSNQEHWLFSRLQDVRDVSATFLSDLEENFENNIFSFQVCDVVLNHPDF
RRVYLYPVYTNQTYQERTFQSLMNSNSNFREVLEKLESDPVCQRLSLKSFLLPFQRITRLKLLQLN I LKR
TQPGSSEAEATKAHHALEQLIRDCNNNVQSMRRT EELIYLSQKIEFECKIFPLISQSRWLKSGELTAL
EFSASPLRRKLNTRPVHLHLFNDCLLLSRPREGSRFLVFDHAPFSSIRGEKCEMKLHGPHKNLFR LFLR
QNTQGAQAEFLFRTEQSEKLRWISALAMPREELDLLECYNSPVQCLRAYKPRENDELALEKADVVMVT
QQSSDGWLEGVRLSDGERGWFPVQQVEFISNPEVRAQNLKEAHRVKTAKLQLVEQQA
  
```

SGP TRRRLEQKLI SEEDLAANDILDYKDDDDKV

**Chromatograms:** [https://cdn.origene.com/chromatograms/mk8100\\_d11.zip](https://cdn.origene.com/chromatograms/mk8100_d11.zip)

**Restriction Sites:** SgfI-RsrII

**Cloning Scheme:**

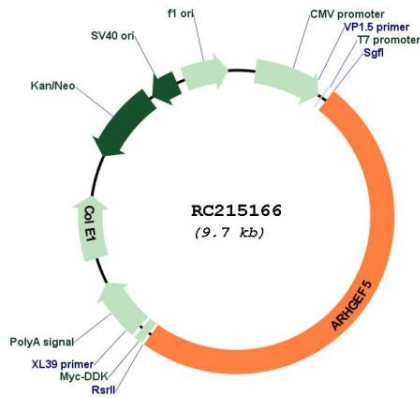


\* The last codon before the Stop codon of the ORF

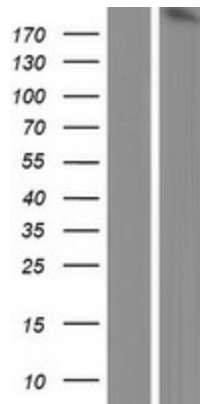
**ACCN:** NM\_005435

<b>ORF Size:</b>	4791 bp
<b>OTI Disclaimer:</b>	The molecular sequence of this clone aligns with the gene accession number as a point of reference only. However, individual transcript sequences of the same gene can differ through naturally occurring variations (e.g. polymorphisms), each with its own valid existence. This clone is substantially in agreement with the reference, but a complete review of all prevailing variants is recommended prior to use. <a href="#">More info</a>
<b>OTI Annotation:</b>	This clone was engineered to express the complete ORF with an expression tag. Expression varies depending on the nature of the gene.
<b>Components:</b>	The ORF clone is ion-exchange column purified and shipped in a 2D barcoded Matrix tube containing 10ug of transfection-ready, dried plasmid DNA (reconstitute with 100 ul of water).
<b>Reconstitution Method:</b>	<ol style="list-style-type: none"><li>1. Centrifuge at 5,000xg for 5min.</li><li>2. Carefully open the tube and add 100ul of sterile water to dissolve the DNA.</li><li>3. Close the tube and incubate for 10 minutes at room temperature.</li><li>4. Briefly vortex the tube and then do a quick spin (less than 5000xg) to concentrate the liquid at the bottom.</li><li>5. Store the suspended plasmid at -20°C. The DNA is stable for at least one year from date of shipping when stored at -20°C.</li></ol>
<b>RefSeq:</b>	<a href="#">NM_005435.4</a>
<b>RefSeq Size:</b>	5505 bp
<b>RefSeq ORF:</b>	4794 bp
<b>Locus ID:</b>	7984
<b>UniProt ID:</b>	<a href="#">Q12774</a>
<b>Cytogenetics:</b>	7q35
<b>Domains:</b>	RhoGEF, SH3, PH
<b>Protein Families:</b>	Druggable Genome
<b>MW:</b>	176.8 kDa
<b>Gene Summary:</b>	Rho GTPases play a fundamental role in numerous cellular processes initiated by extracellular stimuli that work through G protein coupled receptors. The encoded protein may form a complex with G proteins and stimulate Rho-dependent signals. This protein may be involved in the control of cytoskeletal organization. [provided by RefSeq, Jul 2008]

Product images:



Circular map for RC215166



Western blot validation of overexpression lysate (Cat# [LY417305]) using anti-DDK antibody (Cat# [TA50011-100]). Left: Cell lysates from untransfected HEK293T cells; Right: Cell lysates from HEK293T cells transfected with RC215166 using transfection reagent MegaTran 2.0 (Cat# [TT210002]).