

Product datasheet for **RC215163**

MAP4K4 (NM_145686) Human Tagged ORF Clone

Product data:

Product Type: Expression Plasmids
Product Name: MAP4K4 (NM_145686) Human Tagged ORF Clone
Tag: Myc-DDK
Symbol: MAP4K4
Synonyms: FLH21957; HEL-S-31; HGK; MEKKK4; NIK
Mammalian Cell Selection: Neomycin
Vector: pCMV6-Entry (PS100001)
E. coli Selection: Kanamycin (25 ug/mL)
ORF Nucleotide Sequence: >RC215163 representing NM_145686
Red=Cloning site Blue=ORF Green=Tags(s)

TTTTGTAATACGACTCACTATAGGGCGGCCGGAATTCGTCGACTGGATCCGGTACCGAGGAGATCTGCC
GCC**CGATCGCC**

ATGGCGAACGACTCCCCTGCAAAAAGTCTGGTGGACATCGACCTCTCCTCCCTGCGGGATCCTGCTGGGA
TTTTTGAGCTGGTGAAGTGGTTGGAAATGGCACCTATGGACAAGTCTATAAGGGTCGACATGTTAAAC
GGGTCAGTTGGCAGCCATCAAAGTTATGGATGTCCTGAGGATGAAGAGGAAGAAATCAAAGTGGAGATA
AATATGCTAAAGAAATACTCTCATCACAGAAACATTGCAACATATTATGGTGCTTTCATCAAAAAGAGCC
CTCCAGGACATGATGACCAACTCTGGCTTGTATGGAGTTCTGTGGGGCTGGGTCCATTACAGACCTTGT
GAAGAACACCAAAGGGAACACACTCAAAGAAGACTGGATCGCTTACATCTCCAGAGAAATCCTGAGGGGA
CTGGCACATCTTCACATTCATCATGTGATTACCCGGGATATCAAGGGCCAGAATGTGTTGCTGACTGAGA
ATGCAGAGGTGAAACTTGTGACTTTGGTGTGAGTGCTCAGCTGGACAGGACTGTGGGGCGGAGAAATAC
GTTTCATAGGCACTCCCTACTGGATGGCTCCTGAGGTCAATCGCCTGTGATGAGAACCAGATGCCACCTAT
GATTACAGAAGTATCTTTGGTCTTGTGGCATTACAGCCATTGAGATGGCAGAAGGTGCTCCCTCTCT
GTGACATGCATCCAATGAGAGCACTGTTTCTCATTCCCAGAAACCCTCCTCCCGGCTGAAGTCAAAAA
ATGGTCAAGAAAGTTTTTAGTTTTATAGAAGGGTGCCTGGTGAAGAATTACATGCAGCGGCCCTTACA
GAGCAGCTTTTGAACATCCTTTTATAAGGGATCAGCAAATGAAAGGCAAGTTAGAATCCAGCTTAAGG
ATCATATAGATCGTACCAGGAAGAAGAGAGGCGAGAAAGATGAAACTGAGTATGAGTACAGTGGGAGTGA
GGAAGAAGAGGAGGAAGTGCCTGAACAGGAAGGAGAGCCAAGTTCATTGTGAACGTGCCTGGTGTGCT
ACTCTTCGCCGAGATTTCTGAGACTGCAGCAGGAGAACAAGGAACGTTCCGAGGCTCTTCGGAGACAAC
AGTTACTACAGGAGCAACAGCTCCGGGAGCAGGAAGAATATAAAAGGCAACTGCTGGCAGAGAGACAGAA
GCGGATTGAGCAGCAGAAAGAACAGAGGCGACGGCTAGAAGAGCAACAAGGAGAGAGCGGGAAGCTAGA
AGGCAGCAGGAACGTGAACAGCGAAGGAGAGAACAAGAAGAAAAGAGGCGTCTAGAGGAGTTGGAGAGAA
GGCGCAAAGAAGAAGAGGAGAGGAGACGGGCAGAAAGAAGAAAAGAGGAGAGTTGAAAGAGAACAGGAGTA
TATCAGGGCAGCTAGAAGAGGAGCAGCGGCCTTGAAGTCTTCAGCAGCAGCTGCTCCAGGAGCAG



[View online >](#)

GCCATGTTACTGGAGTGCCGATGGCGGGAGATGGAGGAGCACCGGCAGGCAGAGAGGCTCCAGAGGCAGT
TGCAACAAGAACAAGCATATCTCCTGTCTCTACAGCATGACCATAGGAGGCCGCACCCGCAGCACTCGCA
GCAGCCGCCACCACCGCAGCAGGAAAGGAGCAAGCCAAGCTTCCATGCTCCCGAGCCAAAGCCACTAC
GAGCCTGCTGACCGAGCGGAGAGGTGGAAGATAGATTTAGGAAAATAACCACAGCTCCCTGAAGCCC
AGTCTAAGCAGACAGGCAGAGTATTGGAGCCACAGTGCCTTCCCGATCAGAGTCTTTTTCCAATGGCAA
CTCCGAGTCTGTGCATCCCGCCTGCAGAGACCAGCGGAGCCACAGGTACAGTGGTCCCACCTGGCATCT
CTCAAGAACAATGTTTTCCCTGTCTCGCATCCCATTCCTTCAGTGACCCCTTCCCAAATTTGCACACC
ACCATCTTCGTTCTCAGGACCCATGTCCACCTTCCCGCAGTGAGGTGCTCAGTCAGAGCTTGACTCTAA
GTCAGAGGCGCCTGACCCTACCCAAAAGGCTTGGTCTAGATCAGACAGTGACGAGGTGCCTCCAAGGTT
CCTGTGAGAACAACATCTCGCTCCCTGTTCTGTCCCGTCGAGATTCCCCACTGCAGGGCAGTGGGCAGC
AGAATAGCCAGGCAGGACAGAGAACTCCACCAGCAGTATTGAGCCAGGCTTCTGTGGGAGAGAGTGA
GAAGCTGGTGCCAGACCTGGCAGTGGCAGCTCCTCAGGGTCCAGCAACTCAGGATCCCAGCCCGGGTCT
CACCTGGGTCTCAGAGTGGCTCCGGGGAACGCTTCAGAGTGAGATCATCATCAAGTCTGAAGGCTCTC
CATCTCAGCGCTGAAAATGCAGTAAAAACCTGAAGATAAAAAGGAAGTTTTAGACCCCTCAAGCC
TGCTGGCGAAGTGGATCTGACCGCACTGGCCAAAGAGCTTCGAGCAGTGAAGATGTACGGCCACCTCAC
AAAGTAACGGACTACTCCTCATCCAGTGAGGAGTCGGGGACGACGGATGAGGAGGACGACGATGTGGAGC
AGGAAGGGGCTGACGAGTCCACCTCAGGACCAGAGGACACCAGAGCAGCGTCATCTCTGAATTTAGCAA
TGGTGAACGGAATCTGTGAAAACCATGATTGTCCATGATGATGTAGAAAGTGAGCCGGCCATGACCCCA
TCCAAGGAGGGCACTCTAATCGTCCGCCAGACTCAGTCCGCTAGTAGCACACTCCAGAAACAAATCTT
CCTCCTCTTTACACCTTTATAGACCCAGATTACTACAGATTTCTCCATCTAGCGGAACAACAGTGAC
ATCTGTGGTGGGATTTTCTGTGATGGGATGAGACCAGAAGCCATAAGGCAAGATCTACCCGAAAAGGC
TCAGTGGTCAATGTGAATCTACCAACTAGGCCACAGAGTGACACCCCGGAGATTCGTAATACAAGA
AGAGTTTAACTCTGAGATTCTGTGTGCTGCCTTATGGGAGTGAATTTGCTAGTGGGTACAGAGAGTGG
CCTGATGCTGCTGGACAGAAGTGGCCAAGGGAAGGTCTATCCTCTTATCAACCGAAGACGATTTCAACAA
ATGGACGTAAGGAGGCTTGAATGTCTTGGTGAACAATCTGGCAAAAAGGATAAGTTACGTGTCTACT
ATTTGTCTGGTTAAGAAATAAAATACTTCACAATGATCCAGAAGTTGAGAAGAAGCAGGGATGGACAAC
CGTAGGGGATTTGGAAGGATGTGTACATTATAAAGTTGTAATAATGAAAGAATCAAATTTCTGGTGATT
GCTTTGAAGATTCTGTGGAAGTCTATGCGTGGGCACCAAAGCCATATCACAATTTATGGCCTTTAAGT
CATTTGGAGAATTGGTACATAAGCCATTACTGGTGGATCTCACTGTTGAGGAAGGCCAGAGGTTGAAAGT
GATCTATGGATCCTGTGCTGGATTCCATGCTGTTGATGTGGATTCAGGATCAGTCTATGACATTTATCTA
CCAACACATATCCAGTGTAGCATCAAACCCATGCAATCATCATCTCCCAATACAGATGGAATGGAGC
TTCTGGTGTGCTATGAAGATGAGGGGTTTATGTAACACATATGGAAGGATCACCAAGGATGTAGTTCT
ACAGTGGGAGAGATGCCTACATCAGTAGCATATATTCGATCCAATCAGACAATGGGCTGGGAGAGAAG
GCCATAGAGATCCGATCTGTGAAAAGTGGTCACTTGGATGGTGTGTTTCATGCACAAAAGGCTCAAAGAC
TAAATTTCTGTGTAACGCAATGACAAGGTGTTCTTTGCCTCTGTTCCGTCTGGTGGCAGCAGTCAGGT
TTATTTATGACCTTAGGCAGGACTTCTCTTCTGAGCTGG

ACGCGTACGCGGCCGCTCGAGCAGAACTCATCTCAGAAGAGGATCTGGCAGCAAATGATATCCTGGATT
ACAAGGATGACGACGATAAGGTTTAA

Protein Sequence: >RC215163 representing NM_145686
 Red=Cloning site Green=Tags(s)

```

MANDSPAKSLVDIDLSSLRDPAGIFELVEVVNGTYGQVYKGRHVKTGQLAAIKVMDVTEDEEEEIKLEI
NMLKKYSHHRNIATYYGAFIKKSPPGHDDQLWLVMFECGAGSITDLVKNTKGNTLKEDWIAYISREILRG
LAHLHIHHVIHRDIKQNVLLTENA EVKLVDVFGVSAQLDRTVGRRTF IGTPYWM APEVIACDENPDATY
DYRSDLWSCGITAIEMAEGAPPLCDMHPMRALFLIPRNP PRLKSKKWSKFFSFIEGCLVKNYMQRPST
EQLLKHPFIRDQPNERQVRIQLKDHIDRTRKKRGEKDETEYEYSGSEEEEEVEPEQEGEPSSIVNVPGES
TLRRDFLRLQQENKERSEALRRQQLLQEQLREQEYK RQLLAERQKRIEQQKEQRRRLEEQRREAR
RQQEREQRREQEERLEELERRRKEEEERRRAEEKRRVEREQEYIRRQLEEEQRHLEVLQQQLLQEQL
AMLL ECRWREMEHRQAERLQRQLQQEQAYLLSLQHDHRRPQPQHSQQPPPPQQRSKPSFHAPEPKAHY
EPADRAREVEDRFRKTNHSSPEAQSKQTGRVLEPPVPSRSEFSNGNSESVHPALQRP AEPQVQWSHLAS
LKNNVSPVSRSHFSDPSPKFAHHHLRSQDPCPPSRSEVLSQSSDSKSEAPDPTQKAWSRSDSDEVPPRV
PVRTTSRSPVL SRRDSPLQSGGQNSQAGQRNSTSSIEPRL LWERVEKL VPRPGSGSSGSSNSGSPGS
HPGSQSGSGERFRVRSSSKSEGSPSQRL ENAVKKPEDKKEVFRPLKPAGEVDL TALAKELRAVEDVRPPH
KVTDYSSSSEESGTTDEEDDDVEQEGADESTSGPEDTRAASSLNL SNGETESVKTMI VHDDVESEAMTP
SKEGTLIVRQTQSASSTLQKHKSSSSTPFIDPRL LQISPSGTTVTSVVGFS CDGMRPEAIRQDPTRKG
SVVNVNPTNTRPQSDTPEIRKYKRFNSEILCAALWGVNLLVGTESGLMLLDRSGQGVYPLINRRRFQQ
MDVLEGLNVLVTISGKKDKLRVYVYLSWLRNKILHNDPEVEKKQGWTTVG DLEGCVHYKVVKYERIKFLVI
ALKSSVEVYAWAPKPYHKFMAFKSFGELVHKPLLVDL TVEEGQRLKVIY GSCAGFHAVD VDSGVSVDIYL
PTHIQCSIKPHAI IILPNTDGMELLVCYEDEGVYVNTYGRITKD VVLQWGEMPTSVAYIRSNQTMGWGEK
AIEIRSVETGHL DGVFMHKRAQLKFLCERNDKVFFASVRS GSSQVYFMTLGR TSLLSW
  
```

TRTRPLEQKLISEEDLAANDILDYKDDDDKV

Chromatograms: https://cdn.origene.com/chromatograms/mg2900_g05.zip

Restriction Sites: SgfI-MluI

Cloning Scheme:

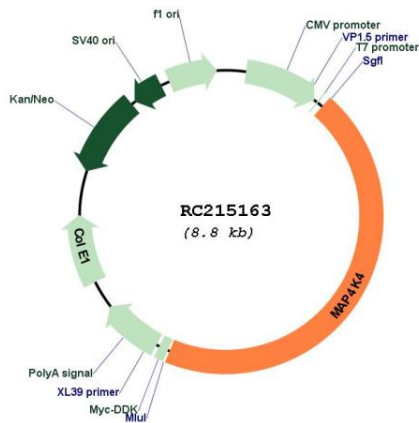


ACCN: NM_145686

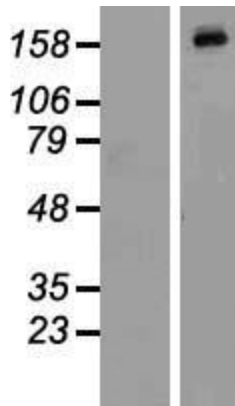
ORF Size: 3960 bp

OTI Disclaimer:	The molecular sequence of this clone aligns with the gene accession number as a point of reference only. However, individual transcript sequences of the same gene can differ through naturally occurring variations (e.g. polymorphisms), each with its own valid existence. This clone is substantially in agreement with the reference, but a complete review of all prevailing variants is recommended prior to use. More info
OTI Annotation:	This clone was engineered to express the complete ORF with an expression tag. Expression varies depending on the nature of the gene.
Components:	The ORF clone is ion-exchange column purified and shipped in a 2D barcoded Matrix tube containing 10ug of transfection-ready, dried plasmid DNA (reconstitute with 100 ul of water).
Reconstitution Method:	<ol style="list-style-type: none">1. Centrifuge at 5,000xg for 5min.2. Carefully open the tube and add 100ul of sterile water to dissolve the DNA.3. Close the tube and incubate for 10 minutes at room temperature.4. Briefly vortex the tube and then do a quick spin (less than 5000xg) to concentrate the liquid at the bottom.5. Store the suspended plasmid at -20°C. The DNA is stable for at least one year from date of shipping when stored at -20°C.
Note:	Plasmids are not sterile. For experiments where strict sterility is required, filtration with 0.22um filter is required.
RefSeq:	NM_145686.2 , NP_663719.1
RefSeq Size:	7495 bp
RefSeq ORF:	3822 bp
Locus ID:	9448
UniProt ID:	O95819
Cytogenetics:	2q11.2
Domains:	pkinase, CNH, TyrKc, S_TKc
Protein Families:	Druggable Genome, Protein Kinase
Protein Pathways:	MAPK signaling pathway
MW:	150.8 kDa
Gene Summary:	The protein encoded by this gene is a member of the serine/threonine protein kinase family. This kinase has been shown to specifically activate MAPK8/JNK. The activation of MAPK8 by this kinase is found to be inhibited by the dominant-negative mutants of MAP3K7/TAK1, MAP2K4/MKK4, and MAP2K7/MKK7, which suggests that this kinase may function through the MAP3K7-MAP2K4-MAP2K7 kinase cascade, and mediate the TNF-alpha signaling pathway. Alternatively spliced transcript variants encoding different isoforms have been identified. [provided by RefSeq, Jul 2008]

Product images:



Circular map for RC215163



Western blot validation of overexpression lysate (Cat# [LY407892]) using anti-DDK antibody (Cat# [TA50011-100]). Left: Cell lysates from untransfected HEK293T cells; Right: Cell lysates from HEK293T cells transfected with RC215163 using transfection reagent MegaTran 2.0 (Cat# [TT210002]).