

Product datasheet for **RC215156**

Periostin (POSTN) (NM_006475) Human Tagged ORF Clone

Product data:

Product Type:	Expression Plasmids
Product Name:	Periostin (POSTN) (NM_006475) Human Tagged ORF Clone
Tag:	Myc-DDK
Symbol:	Periostin
Synonyms:	OSF-2; OSF2; PDLPOSTN; PN
Mammalian Cell Selection:	Neomycin
Vector:	pCMV6-Entry (PS100001)
E. coli Selection:	Kanamycin (25 ug/mL)



[View online »](#)

ORF Nucleotide
Sequence:

>RC215156 representing NM_006475
Red=Cloning site Blue=ORF Green=Tags(s)

TTTTGTAATACGACTCACTATAGGGCGGCCGGAATTCGTCGACTGGATCCGGTACCGAGGAGATCTGCC
GCC**CGGATCGCC**

ATGATTCCCTTTTACCCATGTTTTCTCTACTATTGCTGCTTATTGTTAACCCATAAACGCCAACAAATC
ATTATGACAAGATCTTGGCTCATAGTCGTATCAGGGTTCGGGACCAAGGCCCAAATGTCTGTGCCCTTCA
ACAGATTTTGGGCACAAAAAGAAATACTTCAGCACTTGAAGAAGTGGTATAAAAAAGTCCATCTGTGGA
CAGAAAACGACTGTGTTATATGAATGTTGCCCTGGTTATATGAGAATGGAAGGAATGAAAGGCTGCCAG
CAGTTTGGCCATTGACCATGTTTATGGCACTCTGGGCATCGTGGGAGCCACCACAACGCAGCGCTATTC
TGACGCCTCAAACTGAGGGAGGAGATCGAGGGAAAGGGATCCTTCACTTACTTTGCACCGAGTAATGAG
GCTTGGGACAACCTGGATTCTGATATCCGTAGAGGTTTGGAGAGCAACGTGAATGTTGAATTACTGAATG
CTTTACATAGTCACATGATTAATAAGAGAATGTTGACCAAGGACTTAAAAATGGCATGATTATTCCTTC
AATGTATAACAATTTGGGGCTTTTCATTAACCATTATCCTAATGGGGTGTCACTGTTAATTGTGCTCGA
ATCATCCATGGGAACAGATTGCAACAAATGGTGTGTCCATGTCAATTGACCGTGTGCTTACACAAATTG
GTACCTCAATTCAGACTTCATTGAAGCAGAAGATGACCTTTCATCTTTAGAGCAGCTGCCATCACATC
GGACATATTGGAGGCCCTTGAAGAGACGGTCACTTACACTCTTTGCTCCCACCAATGAGGCTTTTGGAG
AAACTTCCACGAGGTGCTCTAGAAAGGATCATGGGAGACAAAGTGGCTTCCGAAGCTCTTATGAAGTACC
ACATCTTAAACTCTCCAGTGTCTGAGTCTATTATGGGAGGAGCAGTCTTTGAGACGCTGGAAGGAAA
TACAATTGAGATAGGATGTGACGGTGACAGTATAACAGTAAATGGAATCAAAATGGTGAACAAAAAGGAT
ATTGTGACAAATAATGGTGTGATCCATTTGATTGATCAGGTCCTAATTCCTGATTCTGCCAAACAAGTTA
TTGAGCTGGCTGGAAAACAGCAAACACCTTACGGGATCTGTGGCCCAATTAGGCTTGGCATCTGCTCT
GAGGCCAGATGGAGAATACACTTTGCTGGCACCTGTGAATAATGCATTTTCTGATGATACTCTCAGCATG
GATCAGCGCTCCTTAAATTAATTCTGCAGAATCACATATTGAAAGTAAAAGTTGGCCTTAAATGAGCTTT
ACAACGGGCAAATACTGGAAACCATCGGAGGCAAAACAGCTCAGAGTCTTCGTATATCGTACAGCTGTCTG
CATTGAAAATTCATGCATGGAGAAAGGAGTAAGCAAGGGAGAAACGGTGCATTACATATTCGCGAG
ATCATCAAGCCAGCAGAGAAATCCCTCCATGAAAAGTTAAAACAAGATAAGCGCTTTAGCACCTTCTCA
GCCTACTTGAAGCTGCAGACTTGAAGAGCTCCTGACACAACCTGGAGACTGGACATTATTTGTGCCAAC
CAATGATGCTTTTAAAGGAATGACTAGTGAAGAAAAAGAAATTCGATACGGGACAAAAATGCTCTTCAA
AACATCATCTTTATCACCTGACACCAGGAGTTTTTCATTGAAAAGGATTTGAACCTGGTGTACTAACA
TTTTAAAGACCACACAAGGAAGCAAAATCTTTCTGAAAGAAGTAAATGATACACTTCTGGTGAATGAATT
GAAATCAAAAGAACTGACATCATGACAACAAATGGTGAATTCATGTTGTAGATAAACTCCTCTATCCA
GCAGACACACCTGTTGGAATGATCAACTGCTGGAAATACTTAATAAATTAATCAAAATACATCCAAATTA
AGTTTGTTCGTGGTAGCACCTTCAAAGAAATCCCCGTGACTGTCTATACAACTAAAATTAACCAAAGT
TGTGGAACCAAAAATTAAGTGATTGAAGGCAGTCTTCAGCCTATTATCAAACTGAAGGACCCACACTA
ACAAAAGTCAAAATTAAGGTGAACCTGAATTCAGACTGATTAAGAAGGTGAAACAATAACTGAAGTGA
TCCATGGAGAGCCAATTTAAAAAATACACCAAAATCATTGATGGAGTGCCTGTGGAATAACTGAAAA
AGAGACACGAGAAGAACGAATCATTACAGGTCTGAAATAAAATACACTAGGATTTCTACTGGAGGTGGA
GAAACAGAAAGAACTCTGAAGAAATGTTACAAGAAGAGGTCACCAAGGTACCAAAATTCATTGAAGGTG
GTGATGGTCATTTATTTGAAGATGAAGAAATTAAGACTGCTTCAGGGAGACACACCCGTGAGGAAGT
GCAAGCCAACAAAAAGTTCAAGGATCTAGAAGACGATTAAGGAAGGTCGTTCTCAG

ACGCGTACGCGGCCGCTCGAGCAGAACTCATCTCAGAAGAGGATCTGGCAGCAATGATATCCTGGATT
ACAAGGATGACGACGATAAGGTTTAA

Protein Sequence: >RC215156 representing NM_006475
Red=Cloning site Green=Tags(s)

MIPFLPMFSLLLLLIVNPINANNHYDKILAHSRIRGRDQGNVICALQQILGTTKKKYFSTCKNWKYSICG
QKTTVL YECCPGYMRMEGMKGPVLPIDHVGTLGIVGATTTQRYSDASKLREEIEGKGSFTYFAPSNE
AWDNLDSDIRRGLESNVNVELLNALHSHMINKRMLTKDLKNGMIIPSMYNNLGLFINHYPNGVVTVNCAR
IIHGNQIATNGVVHVIDRVLTQIGTSIQDFIEAEDDLSSFRAAAITSDILEALGRDGHFTLFAPTNEAFE
KLPRGVLERIMGDKVASEALMKYHILNLTQCSESIMGGAVFETLEGNTIEIGCDGDSITVNGIKMVNKKD
IVTNGV IHLIDQVLIPDSAKQVIELAGKQTTFTDLVAQLGLASALRPDGEYTL LAPVNNAFSDDTLSM
DQRLKLI LQNHILKVKVGLNELYNGQILETIGGKQLRVFVYRTAVCIENSCMEKGSQGRNGAIHIFRE
IIKPAEKSLHEKQDKRFSTFLSLEAADLKELLTQPGDWTLFVPTNDAFKGMTSEEKELIRDKNALQ
NIILYHLTPGVFIGKGFEPGVNLIKTTQGSKIFLKEVNDLLVNELKSKESDIMTTNGVIHVVDKLLYP
ADTPVGNQDLEILNLIKYIQIKFVRGSTFKEIPVTVYTKIITKVVEPKIKVIEGSLQPIIKTEGPTL
TKVKIEGEPEFRLIKEGETITEVIHGEP I IKKYTKIIDGVPVEITEKETREERIITGPEIKYTRISTGGG
ETEETLKKLLQEEVTKVTKFIEGGDGHLEFDEEIKRLLQGDTPVRKQLANKKVQGSRRRLREGRSQ

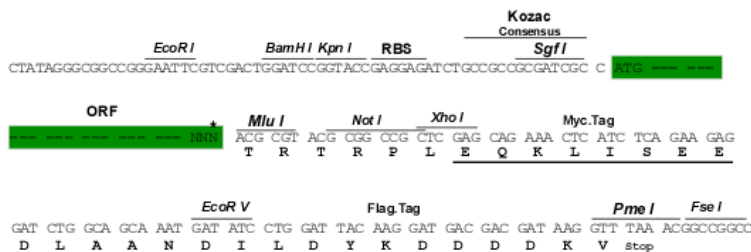
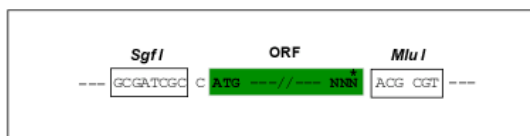
TRTRPLEQKLI SEEDLAANDILDYKDDDDKV

Chromatograms: https://cdn.origene.com/chromatograms/mg4722_c02.zip

Restriction Sites: Sgfl-Mlul

Cloning Scheme:

Cloning sites used for ORF Shutting:



* The last codon before the Stop codon of the ORF

ACCN: NM_006475

ORF Size: 2508 bp

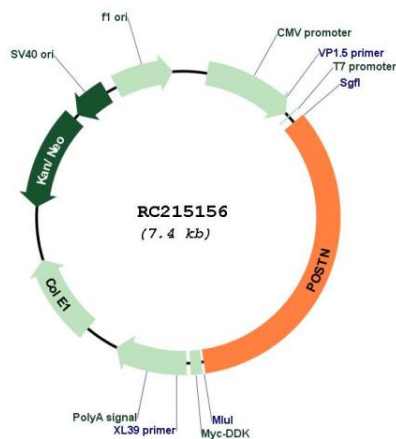
OTI Disclaimer: The molecular sequence of this clone aligns with the gene accession number as a point of reference only. However, individual transcript sequences of the same gene can differ through naturally occurring variations (e.g. polymorphisms), each with its own valid existence. This clone is substantially in agreement with the reference, but a complete review of all prevailing variants is recommended prior to use. [More info](#)

OTI Annotation: This clone was engineered to express the complete ORF with an expression tag. Expression varies depending on the nature of the gene.

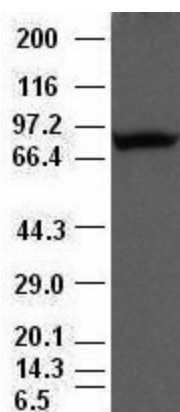
Components: The ORF clone is ion-exchange column purified and shipped in a 2D barcoded Matrix tube containing 10ug of transfection-ready, dried plasmid DNA (reconstitute with 100 ul of water).

Reconstitution Method:	<ol style="list-style-type: none">1. Centrifuge at 5,000xg for 5min.2. Carefully open the tube and add 100ul of sterile water to dissolve the DNA.3. Close the tube and incubate for 10 minutes at room temperature.4. Briefly vortex the tube and then do a quick spin (less than 5000xg) to concentrate the liquid at the bottom.5. Store the suspended plasmid at -20°C. The DNA is stable for at least one year from date of shipping when stored at -20°C.
RefSeq:	NM_006475.2 , NP_006466.2
RefSeq Size:	3213 bp
RefSeq ORF:	2511 bp
Locus ID:	10631
UniProt ID:	Q15063
Cytogenetics:	13q13.3
Domains:	FAS1
Protein Families:	Druggable Genome, Secreted Protein
MW:	93.1 kDa
Gene Summary:	This gene encodes a secreted extracellular matrix protein that functions in tissue development and regeneration, including wound healing, and ventricular remodeling following myocardial infarction. The encoded protein binds to integrins to support adhesion and migration of epithelial cells. This protein plays a role in cancer stem cell maintenance and metastasis. Mice lacking this gene exhibit cardiac valve disease, and skeletal and dental defects. Alternative splicing results in multiple transcript variants encoding different isoforms. [provided by RefSeq, Sep 2015]

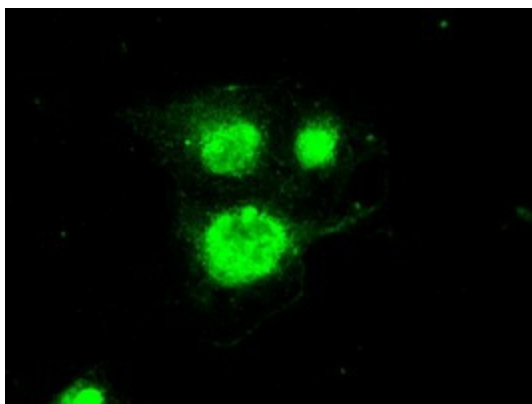
Product images:



Circular map for RC215156



HeLa cells were transfected with human periostin cDNA clone (Cat# RC215156) and lysed. Cell lysates were separated by SDS-PAGE and immunoblotted with anti-POSTN mouse monoclonal antibody (Cat# [TA500070]).



Immunofluorescent staining of COS7 cells transfected by pCMV6-ENTRY POSTN (Cat# RC215156) using anti-POSTN mouse monoclonal antibody (Cat# [TA500070]).