

Product datasheet for RC215150L1

VCY (NM_004679) Human Tagged Lenti ORF Clone

Product data:

Product Type:	Expression Plasmids
Product Name:	VCY (NM_004679) Human Tagged Lenti ORF Clone
Tag:	Myc-DDK
Symbol:	VCY
Synonyms:	BPY1; VCY1; VCY1A
Mammalian Cell Selection:	None
Vector:	pLenti-C-Myc-DDK (PS100064)
E. coli Selection:	Chloramphenicol (34 ug/mL)
ORF Nucleotide Sequence:	The ORF insert of this clone is exactly the same as(RC215150).
Restriction Sites:	SgfI-MluI
Cloning Scheme:	

Cloning sites used for ORF Shuttling:



* The last codon before the Stop codon of the ORF.

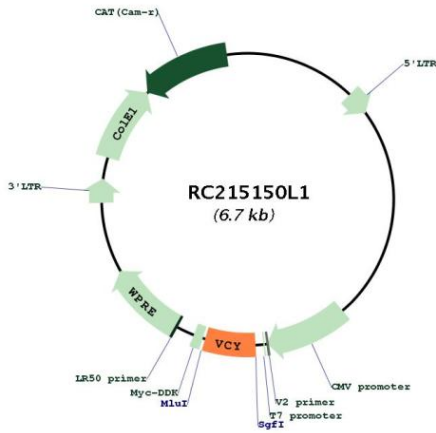
ACCN:	NM_004679
ORF Size:	375 bp



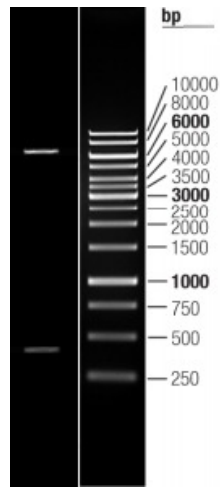
[View online »](#)

OTI Disclaimer:	The molecular sequence of this clone aligns with the gene accession number as a point of reference only. However, individual transcript sequences of the same gene can differ through naturally occurring variations (e.g. polymorphisms), each with its own valid existence. This clone is substantially in agreement with the reference, but a complete review of all prevailing variants is recommended prior to use. More info
OTI Annotation:	This clone was engineered to express the complete ORF with an expression tag. Expression varies depending on the nature of the gene.
Components:	The ORF clone is ion-exchange column purified and shipped in a 2D barcoded Matrix tube containing 10ug of transfection-ready, dried plasmid DNA (reconstitute with 100 ul of water).
Reconstitution Method:	<ol style="list-style-type: none">1. Centrifuge at 5,000xg for 5min.2. Carefully open the tube and add 100ul of sterile water to dissolve the DNA.3. Close the tube and incubate for 10 minutes at room temperature.4. Briefly vortex the tube and then do a quick spin (less than 5000xg) to concentrate the liquid at the bottom.5. Store the suspended plasmid at -20°C. The DNA is stable for at least one year from date of shipping when stored at -20°C.
RefSeq:	NM_004679.2 , NP_004670.1
RefSeq Size:	551 bp
RefSeq ORF:	378 bp
Locus ID:	9084
UniProt ID:	O14598
Cytogenetics:	Yq11.221
MW:	12.9 kDa
Gene Summary:	The protein encoded by this gene is a member of a family of human VCX/Y genes. This gene family has multiple members on both X and Y chromosomes, and all are expressed exclusively in male germ cells. Members of the VCX/Y family share a high degree of sequence identity, with the exception that a 30-bp unit is tandemly repeated in X-linked members but occurs only once in Y-linked members. VCX/Y genes encode small and highly charged proteins of unknown function. This gene encodes a small, positively charged protein. The presence of a putative bipartite nuclear localization signal suggests that this gene encodes a nuclear protein. The genome has two identical copies of this gene within a palindromic region; this record represents the more centromeric copy. [provided by RefSeq, Jul 2008]

Product images:



Circular map for RC215150L1



Double digestion of RC215150L1 using SgfI and MluI