

## Product datasheet for RC215134

### PLEKHG5 (NM\_001042665) Human Tagged ORF Clone

#### Product data:

**Product Type:** Expression Plasmids  
**Product Name:** PLEKHG5 (NM\_001042665) Human Tagged ORF Clone  
**Tag:** Myc-DDK  
**Symbol:** PLEKHG5  
**Synonyms:** CMTRIC; DSMA4; GEF720; Syx; Tech  
**Mammalian Cell Selection:** Neomycin  
**Vector:** pCMV6-Entry (PS100001)  
**E. coli Selection:** Kanamycin (25 ug/mL)  
**ORF Nucleotide Sequence:** >RC215134 representing NM\_001042665  
 Red=Cloning site Blue=ORF Green=Tags(s)

TTTTGTAATACGACTCACTATAGGGCGGCCGGAATTCGTCGACTGGATCCGGTACCGAGGAGATCTGCC  
 GCC**CGATCGCC**

ATGCATTATGATGGGCATGTCCGCTTCGACCTCCCCACAAGGCTCTGTGCTGGCCCGAACGTGTCCA  
 CCCGGTCATGCCCGCGCACCAGCCCCGAGTGGACTTGGAGGAGGAGGAGGAGAGCTCTGTGGA  
 TGGCAAAGGGGACCGGAAGAGCACAGGCCTGAACTCTCCAAGAAGAAAGCAAGGAGGAGACACCGGAT  
 GACCCAAGCAAGGAATGCTTCACTCTGAAATTTGACCTGAATGTGGACATTGAGACAGAGATCGTCCAG  
 CCATGAAGAAGAAGTCACTGGGGAGGTGCTGCTGCCTGTATTTGAAAGGAAGGGCATTGCGCTGGCAA  
 AGTGGACATCTACCTGGACCAGTCCAACACACCCCTGTCCCTCACCTTCGAGGCCACAGGTTCCGGGGGA  
 CACTACCTTCGTGTCAAAGCCCCAGCAAGCCTGGAGATGAGGGCAAGGTGGAGCAGGGCATGAAGGACT  
 CCAAGTCCCTGAGTTTGGCGATTCTGCGGCCAGCTGGGACCGGGCCCCCGCCCTGGAGCGTGTGGACGC  
 CCAGAGCCCGCGGAGAGCCTGGACATCTTGGCCCTGGCCGCGCCGCAAGAACATGTCGGAGTTCCTG  
 GGGGAGGCGAGCATCCCCGGCAGGAGCCCCACGCCCTCCAGCTGCTCTTGCCAGCGGCAGCAGTG  
 GCAGCACCAACTGGCGACAGCTGGAAGAACCGGGCGCCAGTCGCTTACAGCGCTTTTTCAGCTCCGG  
 CCCCAGCACAGCGCCTTTGGCCGGGAGGTAGACAAGATGGAGCAGCTGGAGGGCAAGCTGCACACCTAC  
 AGCCTCTCGGGCTGCCAGGCTGCCCGGGGGCTGCGCTTCGACCATGACTCTGGGAGGAGGAGTACG  
 ATGAAGACGAGGATGAGGACAATGCCTGCCTGAGGCTGGAGGACAGCTGGCGGGAGCTCATTGATGGCA  
 TGAGAAGCTGACCCGGCGCAGTGCCACCAGCAGGAGGCGGTGTGGGAGCTGCTGCACACGAGGCTCC  
 TACATCAGGAACTGCGGTGATCATCAACCTGTTCTGTGCTGCCTCCTGAACCTGCAAGAGTCAGGGC  
 TGCTGTGTGAGGTGGAGGCGGAGCGCCTGTTACAGCAACATCCCGGAGATCGCGCAGCTGCACCGCAGGCT  
 GTGGGCTAGCGTGATGGCGCCGGTGTGGAGAAGGCGCGGCACGCGAGCGCTGCTACAGCCCGGGGAC  
 TTCCTCAAAGGCTTCAAGATGTTTCGGCTCGCTTCAAGCCCTACATCCGCTACTGCATGGAGGAGGAGG  
 GCTGCATGGAGTACATGCGCGCCTGCTGCGGACAACGACCTTCCGGGCTACATCAGTGGGCGGA  
 GAAGCACCCAGTGCCAGAGGCTGAAGCTGAGCGACATGCTGGCAAACCCACCAGCGCTACCAAG



[View online >](#)

TACCCGCTGCTGCTCAAGTCGGTCTGAGGAAGACCGAGGAGCCGCGCGCCAAGGAGGCCGCTGCTCGCCA  
 TGATCGGCTCCGTGGAGCGCTTCATCCACCACGTGAACCGGTGCATGCGGCAGCGGCAGGAGCGGCAGCG  
 GCTGGCGGCCGTGGTGGAGCCGATCGACGCCTACGAGGTGGTGGAAAGCAGCAGCGACGAAGTGGACAAG  
 CTCCTGAAGGAATTTCTGCACCTGGACTTGACAGCGCCATCCCTGGCGCCTCCCCGGAGGAGACGCGGC  
 AGCTGCTGCTGGAGGGGAGCCTGAGGATGAAGGAGGGGAAGGACAGCAAGATGGATGTGTACTGCTTCT  
 TTTCACGGATCTGCTGTTGGTGACCAAAGCAGTGAAGAAGGCAGAGAGGACCAGGGTCATCAGGCCACCC  
 CTGCTCGTGGACAAGATTGTGTGCCGGGAGCTACGGGACCCTGGGTCTTCTCCTTATCTACCTGAATG  
 AGTTTACAGTGTGTAGGGCCCTACACGTTCCAGGCCAGTGGCCAGGCCTTGTGCCGTGGCTGGGTGGA  
 CACCATTTACAATGCCGAGAACCAGCTGCAACAGCTGCGTGCACAGGAGCCCCCAGGCAGTCAGCAGCCC  
 CTGAGAGCCTGGAAGAGGAGGAGGATGAGCAGGAGGAGGAAGAGGAGGAGGAGGAGGAGGAGGAGGAGGAA  
 GCGAGGACAGTGGCACTTCAGCTGCCAGCTCCCCTACCATCATGCGGAAAAGCAGCGGCAGCCCCGACTC  
 TCAGCACTGTGCCTCAGATGGCTCCACGGAGACCCTGGCCATGGTTGTGGTAGAGCCTGGGGACACGCTG  
 TCCTCCCCGAGTTCGACAGCGGTCCTTTCAGCTCCCAGTCTGATGAGACCTCTCTCAGCACCCTGCT  
 CATCTGCCACGCCACCAGTGAAGTGTGCCCCGGTCCGGTGGACGGCCGCTCCTGCTCCATGGACTC  
 TGCTACGGCACCCTCTCCCAACCTCCTTACAAGACTTGTGGCCCCAGGCCAAATGGCAGAGCTAGTG  
 CCTCGGGCCCCAGAGTCCCCACGAGTTCCTTCCCCTCCACCCTCGCCCCGTCTCCGCCGCCACCCCTG  
 TCCAGCTGTTGAGCTGCCCGCCCCACCTGCTCAAGTCTAAGTCCGAGGCCAGCCTCCTCCAGCTGCTGGC  
 AGGGGCTGGCACCATGGGACACCCTCTGCCCCAGCCGACGCTGTGAGAGCTCTGCTGGCTGTTCCA  
 GCCCCAGGTATTAGGACTCAGGGCTCCCCTCAGGAAGCTGGGCCAGCTGGGATTGCCGAGGGGCCCTA  
 GCCCTGGCAGCGGTCTGGGCTAGTCGGCTGCCTGGCCGGGAACCTGCAGGCTCCCACAGGAAGAGGTG  
 TGGAGACTGCCCTCGGGGGCTCTCCAGGGTCCAGCCTGAGCCCCACCAGGGGTCTCTGCCACGAC  
 AGGAAGCTGACCCTGGCCAGCTCTACCGAATCAGGACCACCCTGCTGCTTAACCTCCAGCTCACTGCT  
 CGGAGGTC

AGCGGACCGACGCTACGCGGCCGCTCGAGCAGAACTCATCTCAGAAGAGGATCTGGCAGCAAATGATATCC  
 TGGATTACAAGGATGACGACGATAAGGTTAA

**Protein Sequence:**

>RC215134 representing NM\_001042665  
 Red=Cloning site Green=Tags(s)

MHYDGHVRFDLPPQGSVLARNVSTRSCPRTSPAVDLEEEEEESSVDGKGRKSTGLKLSKKARRRHTD  
 DPSKECFTLKFDLNVDIETIIVPAMKKKSLGEVLLPVFERKGIALGKVDIYLDQSNTPLSLTFEAYRFGG  
 HYLRVKAPAKPGDEGKVEQGMKDSKSLSLPILRPAGTGPALERVDAQSRRESLDILAPGRRRKNMSEFL  
 GEASIPGQEPPTPSSCSLPSGSSGNTGDSWKNRAASRFSGFFSSGPSTSAFGREVDKMEQLEGKLHTY  
 SLFGLPRLPRGLRFDHDSWEEYDEDEDEDNACLRLED SWRELIDGHEKLTTRQCHQOEAVWELLHTEAS  
 YIRKLRVIINLFLCCLLNQESGLLCEVEAERLFSNIPEIAQLHRRLWASVMAPVLEKARRTRALLQPGD  
 FLKGFKMFGLFKPYIRYCMEEEGCMEYMRGLLRDNDLFRAYITWAEKHPQCQRLKLSMMLAKPHQRLTK  
 YPLLLKSVLRKTEEPRAKEAVVAMIGSVERFIHHVNACMRQRQERQLA AVVSRIDAYEVVESSSDEVK  
 LLKEFLHLDLTAPIPGASPEETRQLLLEGLRMKEGKDSKMDVYCFLFTDLLLVTKAVKKAERTRVIRPP  
 LLVVDKIVCRELRDPGSFLLIYLNEFHSAVGAYTFQASGQALCRGWVDTIYNAQNQLQLRAEQPPGSQQP  
 LQSLLEEEDEQEEEEEEEEEEGEDSGTSAASSPTIMRKSSGSPDSQHCASDGSTETLAMVVVEPGDTL  
 SSPEFDSGPFSSQSDETSLSTTASSATPTSELLPLGPVDRGRSCMSDAYSATLSPSLQDFVAPGMAELV  
 PRAPESPRVPSPPSPRLRRRTPVQLLSCPPHLLKSKSEASLLQLLAGAGTHGTPSAPSRSELCLAVP  
 APGIRTQGSPEAGPSWDCRGAPSPGSGPGLVGCLAGEPAGSHRKRCDLPSGASPRVQPEPPPGVSAQH  
 RKLTLAQLYRIRTTLLLNSTLTASEV

SGPTRRRLEQKLISEEDLAANDILDYKDDDDKV

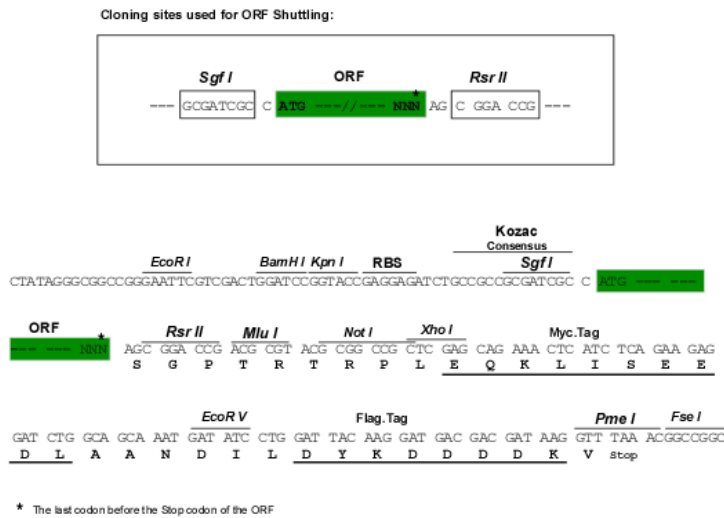
**Chromatograms:**

[https://cdn.origene.com/chromatograms/mk6624\\_c11.zip](https://cdn.origene.com/chromatograms/mk6624_c11.zip)

**Restriction Sites:**

SgfI-RsrII

Cloning Scheme:



ACCN: NM\_001042665

ORF Size: 3018 bp

OTI Disclaimer: The molecular sequence of this clone aligns with the gene accession number as a point of reference only. However, individual transcript sequences of the same gene can differ through naturally occurring variations (e.g. polymorphisms), each with its own valid existence. This clone is substantially in agreement with the reference, but a complete review of all prevailing variants is recommended prior to use. [More info](#)

OTI Annotation: This clone was engineered to express the complete ORF with an expression tag. Expression varies depending on the nature of the gene.

Components: The ORF clone is ion-exchange column purified and shipped in a 2D barcoded Matrix tube containing 10ug of transfection-ready, dried plasmid DNA (reconstitute with 100 ul of water).

Reconstitution Method:

1. Centrifuge at 5,000xg for 5min.
2. Carefully open the tube and add 100ul of sterile water to dissolve the DNA.
3. Close the tube and incubate for 10 minutes at room temperature.
4. Briefly vortex the tube and then do a quick spin (less than 5000xg) to concentrate the liquid at the bottom.
5. Store the suspended plasmid at -20°C. The DNA is stable for at least one year from date of shipping when stored at -20°C.

RefSeq: [NM\\_001042665.1](#), [NP\\_001036130.1](#)

RefSeq Size: 4698 bp

RefSeq ORF: 3021 bp

Locus ID: 57449

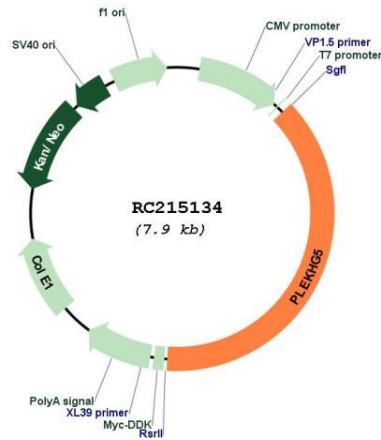
UniProt ID: [O94827](#)

Cytogenetics: 1p36.31

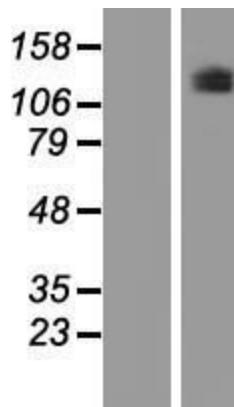
MW: 111.1 kDa

**Gene Summary:** This gene encodes a protein that activates the nuclear factor kappa B (NFkB1) signaling pathway. Mutations in this gene are associated with autosomal recessive distal spinal muscular atrophy. Multiple transcript variants encoding different isoforms have been found for this gene. [provided by RefSeq, May 2012]

**Product images:**



Circular map for RC215134



Western blot validation of overexpression lysate (Cat# [LY421016]) using anti-DDK antibody (Cat# [TA50011-100]). Left: Cell lysates from untransfected HEK293T cells; Right: Cell lysates from HEK293T cells transfected with [RC221926] using transfection reagent MegaTran 2.0 (Cat# [TT210002]).