

## Product datasheet for RC215127

### SA2 (STAG2) (NM\_001042750) Human Tagged ORF Clone

#### Product data:

Product Type:	Expression Plasmids
Product Name:	SA2 (STAG2) (NM_001042750) Human Tagged ORF Clone
Tag:	Myc-DDK
Symbol:	SA2
Synonyms:	bA517O1.1; HPE13; MKMS; NEDXCF; SA-2; SA2; SCC3B
Mammalian Cell Selection:	Neomycin
Vector:	pCMV6-Entry (PS100001)
E. coli Selection:	Kanamycin (25 ug/mL)
ORF Nucleotide Sequence:	>RC215127 representing NM_001042750 Red=Cloning site Blue=ORF Green=Tags(s)

TTTTGTAATACGACTCACTATAGGGCGGCCGGAATTCGTCGACTGGATCCGGTACCGAGGAGATCTGCC  
GCCCGCATCGCC

ATGATAGCAGCTCCAGAAATACCAACTGATTTTAACTACTACAGGAGTCAGAAACACATTTTTCTTCTG  
ACACAGATTTTGAAGATATCGAAGGAAAAACCAAAAGCAAGGCAAGGCAAAACCTGTAAAAAGGCAA  
AAAGGGCCAGCAGAAAAGGGCAAAGGTGGAAATGGAGGAGGAAAACCTCCTTCTGGTCCAAACCGAATG  
AATGGTCATCACCAACAGAATGGAGTGGAAAACATGATGTTGTTGAAGTTGTTAAAATGGCAAGAGTG  
CTATGCAGTCGGTGGTAGATGATTGGATAGAATCATAAAGCATGACCGAGATATAGCACTTCTTGACCT  
TATCAACTTTTTTATTCAGTGTTTCAGGCTGTAAAGGAGTTGTACAGCAGAAATGTTTAGACATATGCAG  
AACTCTGAGATAATTCGAAAAATGACTGAAGAATTCGATGAGGATAGTGGAGATTATCCACTTACCATGG  
CTGGTCTCAGTGAAGAAGTTCAAATCCAGTTTTTGTGAATTCATTGGCGTGTTAGTACGGCAATGTCA  
ATATAGTATCATATATGATGAGTATATGATGGATACAGTCATTTCACTTCTTACAGGATTGTCTGACTCA  
CAAGTCAGAGCATTTCGACATACAAGCACCTGGCAGCTATGAAGTTGATGACAGCTTTGGTGAATGTGG  
CACTAAATCTTAGCATTAAATGGATAATACACAAAGACAATATGAAGCAGAACGGAATAAAATGATTGG  
AAAACGAGCCAATGAGAGGCTAGAATCCTGCTACAAAAGCGGAAAGAGCTTCAGGAAAAATCAAGATGAA  
ATAGAAAATATGATGAATGCAATATTTAAAGGAGTGTGTTGACATAGATACCGTGATGCGATAGCTGAAA  
TTCGAGCTATTTGCATTGAAGAGATTGGCATTGGATGAAGATGTATAGTATGATGCCTTTCTTAATGACAG  
TTATTTAAAATATGTTGGTTGGACTATGCATGATAAGCAAGGTGAAGTAAGACTCAAATGTCTTACTGCT  
CTACAAGGCTTTATTATAACAAAGAGCTTAATCCAACTGGAATTTTTACCAGTCGGTTCAAGGATA  
GAATTGTGCTATGACCTTGACAAAGAATATGATGTTGCAGTACAAGCAATAAAATTACTCACTTGT  
TTTACAGAGTAGTGAAGAAGTTCTCACTGCAGAAGATTGTGAAAATGTCTATCATCTGGTTTATTCAGCT  
CACCGGCCAGTAGCAGTAGCAGCTGGAGAATTTCTCTACAAAAGCTCTTCAGTCGTAGAGATCCAGAGG  
AGGATGGAATGATGAAAAGAAGAGGAAGACAAGGTCCAAATGCCAACCTTGTTAAGACATGGTTTTTTT  
CTTTCTAGAAAGTGAGTTACATGAGCATGCAGCATACCTTGTGGATAGCATGTGGGACTGTGCTACTGAG



CTGCTGAAAGACTGGAATGTATGAATAGCTTGTTACTGGAAGAGCCACTTAGTGGAGAGGAAGCACTAA  
CAGATAGGCAAGAGAGTGCTCTGATTGAAATAATGCTTTGTACCATAGACAAGCGGCTGAATGTCATCC  
TCCCGTGGGAAGAGGGACAGGAAAAAGGGTGCTTACAGCAAAGGAGAAGAAGACACAGTTGGATGATAGG  
ACAAAACTCACTGAGCTTTTTGCCGTGGCCCTTCTCAGTTATTAGCAAAATACTCTGTAGATGCAGAAA  
AGGTGACTAACTTGTTCAGTTGCCCTCAGTACTTTGATTGGAAATATATACCACTGGACGATTAGAAAA  
GCATTTGGATGCCTTATTGCGACAGATCCGGAATATTGTAGAGAAGCACACAGATACAGATGTTTTGGAA  
GAAGTCAACTGATAGATGAATTGGCAGATAAATTTAACC GGCTTCTTGAAGATTTCTGCAAGAGGGTGA  
AGAACCTGATGAAGATGATGCATATCAGGTATTGTCAACATTGAAGAGGATCACTGCTTTTCATAATGCC  
CATGACCTTTCAAAGTGGGATTTATTTGCTTGTAATTACAAACTCTTGAAAAGTGAATCGAAAAATGGAG  
ACATGCCTGAGCAGATTGTTATTCACGCACTGCAGTGTACTCACTATGTAATCCTTTGGCAACTTGCTAA  
GATAACTGAAAGCAGCTTACAAAAGGAGGACTTGCTGCGTTTAAAGAAACAAATGAGAGTATTTTGTGAG  
ATATGTCAACATTACCTGACCAACGTGAATACTACTGTTAAGGAACAGGCCTTCACTATTCTGTGTGATA  
TTTTGATGATCTTCAGCCATCAGATTATGTCAGGAGGGCGTGACATGTTAGAGCCATTAGTGTATACCCC  
TGATTCTTCATTGCACTGAGTTGCTCAGCTTTATTTTGGATCATGTCTTCATTGAACAGGATGATGAT  
AATAATAGTGCAGATGGTCAGCAAGAGGATGAAGCCAGTAAAATTGAAGCTCTGCACAAGAGAAGAAT  
TACTTGCAGCATTTTGTAACTAATTGTATATACTGTGGTGGAGATGAATACAGCTGCAGATATCTTCAA  
ACAGTATATGAAGTATTATAATGACTATGGAGATATCATCAAAGAAACAATGAGTAAAACAAGGCAGATA  
GACAAAATTCAGTGTGCTAAGACCCTTATTCTCAGTCTGCAACAGCTTTTTAATGAAATGATACAAGAAA  
ATGGCTATAATTTTATAGATCATCCTCTACATTTAGTGGCATAAAAAGAACTTGCTCGACGTTTTGCTTT  
AACTTTTGGACTTGATCAGTTGAAAACAAGAGAAGCCATTGCCATGCTACACAAAGATGGCATAGAATTT  
GCTTTTAAAGAGCCTAATCCGCAAGGGGAGAGCCATCCACCTTTAAATTTGGCATTCTTGATATTCTGA  
GTGAATTTTCTTCTAACTACTTCGACAAGACAAAAGAACAGTGTATGTTTACTTGGAAAAGTTCATGAC  
CTTTCAGATGTCCTCCGAAGAGAGGATGTGTGGCTTCCACTGATGTCTTACCGAAATCTTTGCTAGCT  
GGTGGTATGATGACACCATGTCAGTCATTAGTGAATCAGCAGCCGGGGTCAACAGTACGGAGTAAAA  
AATCAAAACCATCTACAGGAAAACGAAAAGTGGTTGAGGGCATGCAGCTTCACTCACTGAAGAAAAGTAG  
TAGTAGTGACAGTATGTGGTTAAGCAGAGAACAACACTGCACACCCCTGTTATGATGCAGACACCACAA  
CTCACCTCCACTATTATGAGAGAGCCAAAAGATTACGGCCTGAGGATAGCTTTCATGAGTGTATCCAA  
TGCAGACTGAACATCATCAACACCTCTTGATTATAACACGCAGGTAACATGGATGTTAGCTCAAAGACA  
ACAAGAGGAAGCAAGGCAACAGCAGGAGAGAGCAGCAATGAGCTATGTTAACTGCGAACTAATCTTCAG  
CATGCCATTCGGCGTGGACAAGCCTAATGGAAGATGATGAAGAGCCAATTGTGGAAGATGTTATGATGT  
CCTCAGAAAGGGAGGATTGAGGATCTTAATGAGGGAATGGATTTTGACACCATGGATATAGATTTGCCACC  
ATCAAAGAACAGACGAGAGAGAACAAGAAGTGAAGCCTGATTTCTTTGATCCAGCTCAATTATGGATGAA  
TCAGTTCTTGAGTGTCAATGTTT

ACGCGTACGCGGCCGCTCGAGCAGAACTCATCTCAGAAGAGGATCTGGCAGCAATGATATCCTGGATT  
ACAAGGATGACGACGATAAGGTTTAA

**Protein Sequence:** >RC215127 representing NM\_001042750  
 Red=Cloning site Green=Tags(s)

```

MIAAPEIPTDFNLLQESETHFSSDTDFEDIEGKNQKQGKGTCKKGGKPAEKGGNGGGKPPSPGNRM
NGHHQNGVENMMLFEVVKMGKSAMQSVVDDWIESYKHDRDIALLDLINFQICSGCKGVVTAEMFRHMQ
NSEIIRKMTTEEFDEDSGDYPLTMAGPQWKFKSSFCEFIGVLVRQCQYSIIYDEYMMDTVISLLTGLSDS
QVRAFRTSTLAAMKLMALVNVALNLSINMDNTQRQYEAERNKMIKQRANERLELLLQKRKELQENQDE
IENMMNAIFKGVFVHRYRDAIAEIRAICIEEIGIWMKMYSDAFLNDSYLKYVGTMMHDKQGEVRLKCLTA
LQGLYNNKELNSKLELFTSRFKDRIVSMTLDKEYDVAVQAIKLLTLVLQSSEEVLTAECCENVYHLVYSA
HRPVAVAAAGEFLYKFLSRRDPEEDGMMKRRRQGPANLVKTLVFFLESELHEHAAYLVDSMWDCAE
LLKDWECMNSLLLEEPLSGEEALTDRQESALIEIMLCTIRQAAECHPPVGRGTGKRVLTAKKTKLDDR
TKITELFAVALPQLLAKYSVDAEKVTNLLQLPQYFDLEIYTTGRLEKHLDALLRQIRNIVEKHTDTDVLE
ACSKTYHALCNEEFTIFNRVDISRSQIDELADKFNRLLEDFLQEGEEDDDAYQVLSTLKRTAFHNA
HDLKDWLDFACNYKLLKGTIENGDMPEQIVIHALQCTHYVILWQLAKITESSTKEDLLRLKKQMRVFCQ
ICQHLYTNVNTTVKEQAFITLCDILMIFSHQIMSGGRDMLVYTPDSSLQSELLSFILDHVFIEQDDD
NNSADGQQEDEASKIEALHKRRNLLAAFCKLIVYTVVEMNTAADIFKQYMKYNDYGDIIKETMSKTRQI
DKIQCAKTLILSLQQLFNEMIQENGFNDRSSSTFSGIKELARRFALTFGLDQLKTREAIAMLHKDGEIF
AFKEPNPQGESHPPLNLAFLDILSEFSSKLLRQDKRTVYVYLEKFMFTFQMSLRREDVWLPLMSYRNSLLA
GGDDDTMSVISGISSRGSTVRSKSKPSTGKRKVVVEGMQLSLTESSSDSMWLREQTLHTPVMMQTPQ
LTSTIMREPKRLRPEDSFMSVYPMQTEHHQTPLDYNTQVTWMLAQRQEEARQQQERAAMSYYKLRNLQ
HAIRRGTSLMEDDEEPIVEDVMSSEGRIEDLNEGMDFDTMDIDLPPSKNRRRETELKPDFDFPASIMDE
SVLGVSMF
  
```

TRTRPLEQKLISEEDLAANDILDYKDDDDKV

**Chromatograms:** [https://cdn.origene.com/chromatograms/mk8027\\_h02.zip](https://cdn.origene.com/chromatograms/mk8027_h02.zip)

**Restriction Sites:** SgfI-MluI

**Cloning Scheme:**

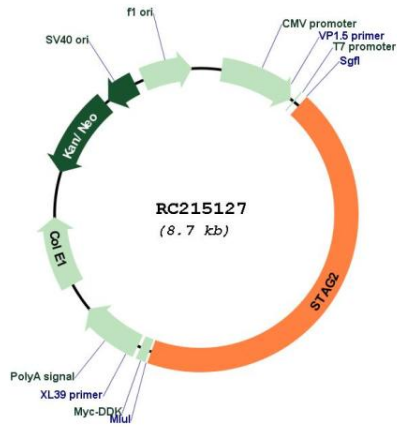


**ACCN:** NM\_001042750

**ORF Size:** 3804 bp

<b>OTI Disclaimer:</b>	The molecular sequence of this clone aligns with the gene accession number as a point of reference only. However, individual transcript sequences of the same gene can differ through naturally occurring variations (e.g. polymorphisms), each with its own valid existence. This clone is substantially in agreement with the reference, but a complete review of all prevailing variants is recommended prior to use. <a href="#">More info</a>
<b>OTI Annotation:</b>	This clone was engineered to express the complete ORF with an expression tag. Expression varies depending on the nature of the gene.
<b>Components:</b>	The ORF clone is ion-exchange column purified and shipped in a 2D barcoded Matrix tube containing 10ug of transfection-ready, dried plasmid DNA (reconstitute with 100 ul of water).
<b>Reconstitution Method:</b>	<ol style="list-style-type: none"> <li>1. Centrifuge at 5,000xg for 5min.</li> <li>2. Carefully open the tube and add 100ul of sterile water to dissolve the DNA.</li> <li>3. Close the tube and incubate for 10 minutes at room temperature.</li> <li>4. Briefly vortex the tube and then do a quick spin (less than 5000xg) to concentrate the liquid at the bottom.</li> <li>5. Store the suspended plasmid at -20°C. The DNA is stable for at least one year from date of shipping when stored at -20°C.</li> </ol>
<b>RefSeq:</b>	<a href="#">NM_001042750.2</a>
<b>RefSeq Size:</b>	6186 bp
<b>RefSeq ORF:</b>	3807 bp
<b>Locus ID:</b>	10735
<b>UniProt ID:</b>	<a href="#">Q8N3U4</a>
<b>Cytogenetics:</b>	Xq25
<b>Protein Pathways:</b>	Cell cycle
<b>MW:</b>	145.8 kDa
<b>Gene Summary:</b>	The protein encoded by this gene is a subunit of the cohesin complex, which regulates the separation of sister chromatids during cell division. Targeted inactivation of this gene results in chromatid cohesion defects and aneuploidy, suggesting that genetic disruption of cohesin is a cause of aneuploidy in human cancer. Alternatively spliced transcript variants encoding different isoforms have been found for this gene. [provided by RefSeq, Sep 2013]

Product images:



Circular map for RC215127