

Product datasheet for RC215124

NuMA (NUMA1) (NM_006185) Human Tagged ORF Clone

Product data:

Product Type:	Expression Plasmids
Product Name:	NuMA (NUMA1) (NM_006185) Human Tagged ORF Clone
Tag:	Myc-DDK
Symbol:	NuMA
Synonyms:	NMP-22; NUMA
Mammalian Cell Selection:	Neomycin
Vector:	pCMV6-Entry (PS100001)
E. coli Selection:	Kanamycin (25 ug/mL)
ORF Nucleotide Sequence:	>RC215124 representing NM_006185. Blue=ORF Red=Cloning site Green=Tag(s)

```
GCTCGTTTGTAGTGAACCGTCAGAATTTGTAAACGACTCACTATAGGGCCGCCGGGAATTCGTCGACTG
GATCCGGTACCGAGGAGATCTGCCGCCGCGATCGCC
ATGACACTCCACGCCACCCGGGGGCTGCACTCCTCTCTTGGGTGAACAGTCTACACGTGGCTGACCCT
GTGGAGGCTGTGCTGCAGCTCCAGGACTGCAGCATCTTCATCAAGATCATTGACAGAATCCATGGCACT
GAAGAGGGACAGCAAATCTGAAGCAGCCGGTGTGAGAGACTGGACTTTGTGTGACGTTTTCTGCAG
AAAAATCGAAAACATCCCTCTTCCCCAGAATGCCTGGTATCTGCACAGAAGGTGCTAGAGGGATCAGAG
CTGGAAGTGGCGAAGATGACCATGCTGCTTTATACCACTCTACCATGAGCTCCAAAAGTCCAGGGAC
TGGGAACAGTTTGAATATAAAATTCAGGCTGAGTTGGCTGTCATTCTTAAATTTGTGCTGGACCATGAG
GACGGGTAAACCTTAATGAGGACCTAGAGAATTCCTACAGAAAGCTCCTGTGCCTTCTACCTGTCT
AGCACATTCCTGAAGAGCTCTCCACCTAGCCACCAGGCCAAGAGGGAGATTGCTTCTTAGAGCTA
CAGAAGTTGCTCCTCTTCCAGTGGGAACAATTTCTCTCAGGTTCTCCAGTTCTCCCATGGGTGAT
ATCCTGCAGACCCACAGTTCAGATGAGACGGCTGAAGAAGCAGCTTGCTGATGAGAGAAGTAATAGG
GATGAGCTGGAGCTGGAGCTAGCTGAGAACCGCAAGCTCCTCACCAGAAAGGATGCACAGATAGCCATG
ATGCAGCAGCGCATTGACCGCTAGCCCTGCTGAATGAGAAGCAGGCGGCCAGCCACTGGAGCCCAAG
GAGCTTGGAGAGCTGCGTGACAAGAATGAGAGCCTTACCATGCGGCTGCATGAAACCTGAAGCAGTGC
CAGGACCTGAAGACAGAGAAGGCCAGATGGATCGAAAATCAACCAGCTTTCGGAGGAGAAATGGAGAC
CTTTCCTTTAAGCTGCGGGAGTTTGCCAGTCATCTGCAGCAGCTACAGGATGCCCTCAATGAGCTGACG
GAGGAGCACAGCAAGGCCACTCAGGAGTGGCTAGAGAAGCAGGCCAGCTGGAGAAGGAGCTCAGCGCA
GCCCTGCAGGACAAGAAATGCCTTGAAGAGAAGAACGAAATCCTTCAAGGAAAATTTACAGCTGGAA
GAACACTTGTCCAGCTGCAGGATAACCCACCCAGGAGAAGGGCGAGGTGCTGGGTGATGTCTTGCAG
CTGAAACCTTGAAGCAAGAGGCCAGCCACTTGTGTCAAAACAACACACAGCTCCAAGCCAGGGTAGAG
ATGCTGGAGACTGAGCGAGGCCAGCAGGAAGCCAAGCTGCTTGTGAGCGGGGCCACTTCGAAGAAGAA
AAGCAGCAGCTGTCTAGCCTGATCACTGACCTGCAGAGCTCCATCTCAAACCTCAGCCAGGCCAAGGAA
GAGCTGGAGCAGGCTCCAGGCTCATGGGGCCGGTTGACTGCCAGGTGGCCTCTGACCTCTGAG
```



[View online >](#)

CTCACCACACTCAATGCCACCATCCAGCAACAGGATCAAGAAGTGGCTGGCCTGAAGCAGCAGGCCAAA
 GAGAAGCAGGCCAGCTAGCACAGACCCTCCAACAGCAAGAACAGGCCTCCCAGGGCCTCCGCCACCAG
 GTGGAGCAGCTAAGCAGTAGCCTGAAGCAGAAGGAGCAGCAGTTGAAGGAGGTAGCGGAGAAGCAGGAG
 GCAACTAGGCAGGACCATGCCAGCAACTGGCCACTGCTGCAGAGGAGCGAGAGGCCCTCCTTAAGGGAG
 CGGGATGCGGCTCTCAAGCAGCTGGAGGCACTGGAGAAGGAGAAGGCTGCCAAGCTGGAGATTCTGCAG
 CAGCAACTTCAGGTGGCTAATGAAGCCCAGGACAGTCCCAGACCCTCAGTGACACAGGCCACAGCCGAGG
 AAGGCAGAGCTGAGCCGGAAGGTGGAGGAATCCAGGCCCTGTGTTGAGACAGCCCAGGAACAGCAT
 GAGGCCAGGCCAGGTTGCAGAGCTAGAGTTGCAGCTGCGGTCTGAGCAGCAAAAAGCAACTGAGAAA
 GAAAGGGTGGCCAGGAGAAGGACCAGCTCCAGGAGCAGCTCCAGGCCCTCAAAGAGTCCTGAAGGTC
 ACCAAGGGCAGCCTTGAAGAGGAGAAGCGCAGGGCTGCAGATGCCCTGGAAGAGCAGCAGCGTTGTATC
 TCTGAGCTGAAGGCAGAGACCCGAAGCCTGGTGGAGCAGCATAAGCGGGAACGAAAGGAGCTGGAAGAA
 GAGAGGGCTGGGCGCAAGGGGCTGGAGGCTCGATTACAGCAGCTTGGGGAGGCCCATCAGGCTGAGACT
 GAAGTCTGCGGCGGAGCTGGCAGAGGCCATGGCTGCCAGCACACAGCTGAGAGTGAGTGTGAGCAG
 CTCGTCAAAGAAGTAGCTGCCTGGCGTGAGCGGTATGAGGATAGCCAGCAAGAGGAGGCACAGTATGGC
 GCCATGTTCCAGGAACAGCTGATGACTTGAAGGAGGAATGTGAGAAGGCCCGCCAGGAGCTGCAGGAG
 GCAAAGGAGAAGGTGGCAGGCATAGAATCCCACAGCGAGCTCCAGATAAGCCGGCAGCAGAACGAACTA
 GCTGAGCTCCATGCCAACCTGGCCAGAGCACTCCAGCAGGTCAAAGAGAAGGAAGTCAGGGCCCAGAAAG
 CTTGCAGATGACCTCTCCACTCTGCAGGAAAAGATGGCTGCCACCAGCAAAGAGGTGGCCCGCTTGAG
 ACCTTGGTGCAGCAAGGCAGGTGAGCAGCAGGAAACAGCCTCCCGGGAGTTAGTCAAGGAGCTGCGAGG
 GCAGGAGACAGACAGCCGAGTGGCTGGAAGAGCAACAGGGACGCCAGTTCTGCAGCACACAGGCAGCG
 CTGCAGGCTATGGAGCGGGAGGCAGAGCAGATGGGCAATGAGCTGGAACGGCTGCGGGCCGCGTGTATG
 GAGAGCCAGGGGCAGCAGCAGGAGGAGCGTGGCAGCAGGAAAGGGAGGTGGCGGGCTGACCCAGGAG
 CGGGCGCTGCCAGGCTGACCTTGCCTGGAGAAGCGGCCAGAGCAGAGCTTGAGATCGGGCTGCAG
 AAGGCCCTCAACGAGCAGCGTGTGGAGTTCGCTACCCTGCAAGAGGCAGTGGCTCATGCCCTGACGGAA
 AAGGAAGCAAGGACCAGGAGTTGGCAAGCTTGTGGTCTGGAGGCAGCCAGATAAAAGAGCTGGAG
 GAACCTCGGCAAACCGTGAAGCAACTGAAGGAACAGCTGGCTAAGAAAAGAAAAGGAGCACGCATCTGGC
 TCAGGAGCCCAATCTGAGGCTGCTGGCAGGACAGGCCAACAGGCCCAAGCTGGAGGCACTGCGGGCA
 GAGGTGAGCAAGCTGGAACAGCAATGCCAGAAGCAGCAGGAGCAGGCTGACAGCCTGGAACGCAGCCTC
 GAGGCTGAGCGGGCTCCCGGGTGAAGCGGACAGTGTCTGGAGACTCTGCAGGGCCAGTTAGAGGAG
 AAGGCCAGGAGTAGGGCACAGTCAAGTGCCTTAGCCTCGGCCAACGGGAGTTGGCTGCCTTCCGC
 ACCAAGGTACAAGACCACAGCAAGGCTGAAGATGAGTGAAGGCCAGGTGGCCCGGGCCGGCAAGAG
 GCTGAGAGGAAAAATAGCCTCATCAGCAGCTTGGAGGAGGAGGTGCCATCCTGAATCGCCAGGTCTTG
 GAGAAGGAGGGGAGAGCAAGGAGTTGAAGCGGCTGGTGTGGCCGAGTCAGAGAAGAGCCAGAAGCTG
 GAGGAGAGGCTGCGCCTGCTGCAGGCAGAGACAGCCAGCAACAGTGCAGAGCTGCAGAACGCAGCTCT
 GCTCTGCGGGAGGAGGTGCAGAGCCTCCGGGAGGAGGCTGAGAAAACAGCGGTGGCTTACAGAACTG
 CGGCAGGAGCTGACCTCACAGGCTGAGCGTGGGAGGAGCTGGGCCAAGAATTGAAGCGGTGGCAGGAG
 AAGTCTTCCAGAAAGAGCAGGCCCTCTCCACCCTGCAGCTCGAGCACACCAGCACACAGGCCCTGGTG
 AGTGAGCTGCTGCCAGCTAAGCACCTCTGCCAGCAGCTGCAGGCCGAGCAGGCCGCTGCCGAGAAACGC
 CACCGTGAGGAGCTGGAGCAGAGCAAGCAGGCCGCTGGGGACTGCGGGCAGAGCTGCTGCGGGCCAG
 CGGGAGCTTGGGAGCTGATTCCTCTGCGGCAGAAGGTGGCAGAGCAGGAGCGAACAGCTCAGCAGCTG
 CGGGCAGAGAAGGCCAGCTATGCAGAGCAGCTGAGCATGCTGAAGAAGGCGCATGGCCTGCTGGCAGAG
 GAGAACCAGGGGGCTGGGTGAGCGGGCAACCTTGCCCGCAGTTTCTGGAAGTGGAGTTGGACCAGGCC
 CGGGAGAAGTATGTCCAAGAGTTGGCAGCCGTACGTGCTGATGCTGAGACCCGTCTGGCTGAGGTGCAG
 CGAGAAGCACAGAGCACTGCCCGGAGCTGGAGGTGATGACTGCCAAGTATGAGGGTGCCAAAGTCAAG
 GTCCTGGAGGAGAGGCAGCGTTCCAGGAAGAGAGGCAGAACTCACTGCCAGGTGGAGCAGCTAGAG
 GTATTTCCAGAGAGCAAACCTAAGCAGGTGGAAGAAGTGAAGTGAAGAACTGGCTGACTCTGACCAAGCC
 AGCAAGGTGCAGCAGCAGAAGCTGAAGGCTGTCCAGGCTCAGGGAGGCGAGAGCCAGCAGGAGGCCAG
 CGCCTCCAGGCCAGCTGAATGAACTGCAAGCCAGTTGAGCCAGAAGGAGCAGGCAGCTGAGCACTAT
 AAGCTGCAGATGGAGAAAGCCAAAACACATTATGATGCCAAGAAGCAGCAGAACCAGAGCTGCAGGAG
 CAGCTGCGGAGCCTGGAGCAGCTGCAGAAGGAAAAAAAGAGCTGCGAGCTGAAGCTGAACGGCTGGGC
 CATGAGCTACAGCAGGCTGGGCTGAAGACCAAGGAGGCTGAACAGACCTGCCGCCACCTTACTGCCAG
 GTGCGCAGCCTGGAGGCACAGGTTGCCATGCAGACCAGCAGCTTCGAGACCTGGGCAAAATTCAGGTG

GCAACTGATGCTTTAAAGAGCCGTGAGCCCCAGGCTAAGCCCCAGCTGGACTTGAGTATTGACAGCCTG
GATCTGAGCTGCGAGGAGGGGACCCCACTCAGTATCACCAGCAAGCTGCCTCGTACCCAGCCAGACGGC
ACCAGCGTCCCTGGAGAACCAGCCTCACCTATCTCCAGCGCCTGCCCCCAAGGTAGAATCCCTGGAG
AGTCTCTACTTCACTCCCATCCCTGCTCGGAGTCAGGCCCCCTGGAGAGCAGCCTGGACTCCCTGGGA
GACGTCTTCTGGACTCGGTCGTAAGACCCGCTCCGCTCGTCGGCGCACCACGCAGATCATCAACATC
ACCATGACCAAGAAGCTAGATGTGAAGAGCCAGACAGCGCAACTCATCGTTCTACAGCACGGGTCT
GCTCCTGCTTCCAGGCTAGCCTGCGAGCCACCTCCTCTACTCAGTCTCTAGCTCGCCTGGGTTCTCCC
GATTATGGCAACTCAGCCCTGCTCAGTTGCCTGGCTACCGCCCCACCACTCGCAGTTCTGCTCGTCGT
TCCCAGGCCGGGGTGTCCAGTGGGGCCCTCCAGGAAGGAACAGCTTCTACATGGGCACTTGCCAGGAT
GAGCCTGAGCAGCTGGATGACTGGAACCGATTGCAGAGCTGCAGCAGCGCAATCGAGTGTGCCCCCA
CATCTGAAGACCTGCTATCCCCTGGAGTCCAGGCCTTCCCTGAGCCTGGGCACCATCACAGATGAGGAG
ATGAAAACCTGGAGACCCCAAGAGACCCTGCGCCGAGCCAGCATGCAGCCAATCCAGATAGCCGAGGGC
ACTGGCATCACCACCCGGCAGCAGCGCAAACGGGTCTCCCTAGAGCCCCACAGGGCCCTGGAACCTCT
GAGTCTAAGAAGCCACCAGCTGTTTCCACGCCCATGACTCCCCGAGACCGACATGAAGGGCGCAAA
CAGAGCACTACTGAGGCCAGAAGAAAGCAGCTCCAGTTCTACTAAACAGGCTGACCGGCCAGTCTG
ATGGCCTTCAGCATCCTCAACACACCCAAGAAGCTAGGGAACAGCCTTCTGCGGGGGGAGCCTCAAAG
AAGGCCCTGTCCAAGGTTCCCCCAACTCGCAGTGGAAACCGCGTCTCCGCGCATTGCCACCACC
ACAGCCAGCGCCGCACTGCTGCCGCCATTGGTGCCACCCTCGAGCCAAGGGCAAGGCAAAAGCAC
ACGCGTACGCGGCCGCTCGAGCAGAACTCATCTCAGAAGAGGATCTGGCAGCAATGATATCCTGGAT
TACAAGGATGACGACGATAAGGTTTAAACGGCCGGC

Protein Sequence: >Peptide sequence encoded by RC215124
 Blue=ORF Red=Cloning site Green=Tag(s)

MTLHATRGAALLSWVNSLHVADPVEAVLQLQDCSIFIKIIDRIHGTEEGQQILKQPVSERLDFVCSFLQ
 KNRKHPSSPECLVSAQKVLGSELELAKMTMLLLYHSTMSKSPRDWEQFEYKIQAELAVILKFVLDHE
 DGLNLNEDLENFLQKAPVPSTCSSTFPEELSPPSHQAKREIRFLELQKVASSSSGNNFLSGSPASPMGD
 ILQTPQFMRRLLKQLADERSNRDELELELAENRKLTEKDAQIAMMQRIDRLALLNEKQAASPLEPK
 ELEELRDKNESLTMRLHETLKQCQDLKTEKSQMDRKINQLSEENGDL SFKLREFASHLQQLQDALNELT
 EEHSKATQEWLEKQAQLEKELSAALQDKKCLEEKNEILQGKLSQLEEHLSQLQDNPPQEKGVEVLDVQLQ
 LETLKQEAATLAANNTQLQARVEMLETERGQQEAKLLAERGFHEEEKQQLSSLITDLQSSISNLSQAKE
 ELEQASQAHGARLTAQVASLTSELTTLNATIQQQDQELAGLKQQAQKQAQLAQTQQQEASQGLRHQ
 VEQLSSSLKQKEQQLKEVAEKQEAQRDHAQQLATAAEEREASLRERDAALKQLEALEKEKAAKLEILQ
 QQLQVANEARDSAQT SVTQAQREKAELSRKVEELQACVETARQEQHEAQAQVAEELQLRSEQQKATEK
 ERVAQEKDQLQEQLQALKEKSLKVTKGSLEEEKRRAADALEEQRCISELKAETRSLVEQHKRERKELEE
 ERAGRKGL EARLQQLGEAHQAE TEVLRRELAEMAQAHTAESECEQLVKEVAAWRERYEDSQQEEAQYG
 AMFQEQLMTLKEECEKARQELQEAEKVAGIESHSELQISRQONELAEHLANLARALQQVQEKEVRAQK
 LADDLSTLQEKMAATSKEVARLETLVRKAGEQQETASRELVKEPARAGDRQPEWLEEQGGRQFCSTQAA
 LQAMEREAQMGNELERLRAALMESQGGQQEERGGQEREVARLTQERGRAQADLAEKAAEALEMRLQ
 NALNEQRVEFATLQEALAHALTEKEGKDQELAKLRGLEAAQIKELLELRQTVKQLKEQLAKKEKEHASG
 SGAQSEAAGRTEPTGPKLEALRAEVSKLEQQCQKQEQEADSLERSLEAERASRAERDSALETQGGLEE
 KAQELGHSQSALASAQRELAAFRTKVQDHSKADEWKAQVARGRQEAERKNSLISSEEEVSIILNRQVL
 EKEGESKELKRLVMAESEKSKLEERLRLQAE TASNSARAAERSALREEVQSLREEAEKQRVASENL
 RQELTSQAERAEEELGQELKAWQEKFFQKEQALSTLQLEHTSTQALVSELLPAKHLCCQQLQAEQAAAEKR
 HREELEQSKQAAGGLRAELLRAQRELGELIPLRQKVAEQERTAQQLRAEKASYAEQLSMLKKAHGLLAE
 ENRGLGERANLGRQFLEVELDQAREKYVQELAAVRADAETRLAEVQREAQSTARELEVMTAKYEGAKVK
 VLEERQRFQEERQKLAQVEQLEVFQREQTKQVEELSKKLADSDQASKVQQKLVKAVQAQGGESQQAQ
 RLQAQLNELQAQLSQKEQAAEHYKLMQEKAKTHYDAKKQONQELQEQLRSLEQLQKENKELRAEAERLG
 HELQQAGLKTKEAEQTCRHLTAQVRSLEAQVAHADQQLRDLGKFQVATDALKSREPQAKPQLDLSIDSL
 DLSCEEGTPLSITSKLPRTPDGTSPGEPASPI SQRLLPKVESLESLEYFTPIPARSQAPLESSLDSLG
 DVFLDSGRKTRSARRRTTQIINITMTKKLDVEEPDSANSSFYSTRSAPASQASLRATSSSTQSLARLGSP
 DYGNSALLSLPGYRPTTRSSARRSQAGVSSGAPPGRNSFYMGTCQDEPEQLDDWNRIAEQLQRNRVCP
 HLKTCYPLESRPSLSLGTITDEEMKTGDPQETLRRASMQPIQIAEGTGITTRQQRKRVSLPHQGGP
 ESKKATSCFPRPMTPRDRHEGRKQSTTEAQKKAAPASTKQADRRQSMFASILNTPKLLGNSLLRRGASK
 KALSKASPNTRSRSPRIATTTASAATAAAIGATPRAKGAH
 TRTRPLEQKLISEEDLAANDILDYKDDDDKV

Chromatograms: https://cdn.origene.com/chromatograms/mk8027_g04.zip

Restriction Sites: SgfI-MluI

Cloning Scheme:



ACCN: NM_006185

ORF Size: 6345 bp

OTI Disclaimer: Due to the inherent nature of this plasmid, standard methods to replicate additional amounts of DNA in E. coli are highly likely to result in mutations and/or rearrangements. Therefore, OriGene does not guarantee the capability to replicate this plasmid DNA. Additional amounts of DNA can be purchased from OriGene with batch-specific, full-sequence verification at a reduced cost. Please contact our customer care team at custsupport@origene.com or by calling 301.340.3188 option 3 for pricing and delivery.

The molecular sequence of this clone aligns with the gene accession number as a point of reference only. However, individual transcript sequences of the same gene can differ through naturally occurring variations (e.g. polymorphisms), each with its own valid existence. This clone is substantially in agreement with the reference, but a complete review of all prevailing variants is recommended prior to use. [More info](#)

OTI Annotation: This clone was engineered to express the complete ORF with an expression tag. Expression varies depending on the nature of the gene.

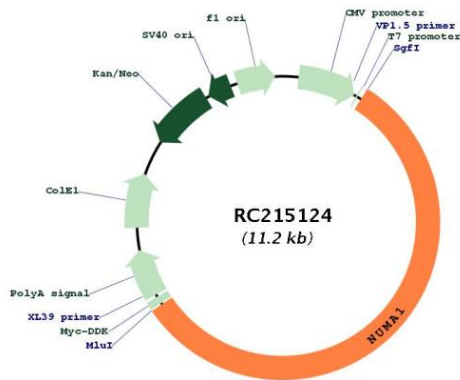
Components: The ORF clone is ion-exchange column purified and shipped in a 2D barcoded Matrix tube containing 10ug of transfection-ready, dried plasmid DNA (reconstitute with 100 ul of water).

- Reconstitution Method:
1. Centrifuge at 5,000xg for 5min.
 2. Carefully open the tube and add 100ul of sterile water to dissolve the DNA.
 3. Close the tube and incubate for 10 minutes at room temperature.
 4. Briefly vortex the tube and then do a quick spin (less than 5000xg) to concentrate the liquid at the bottom.
 5. Store the suspended plasmid at -20°C. The DNA is stable for at least one year from date of shipping when stored at -20°C.

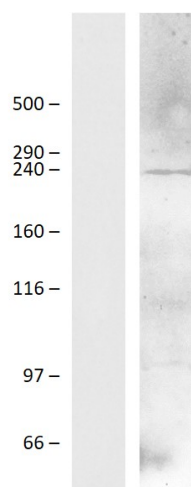
RefSeq: [NM_006185.4](#)
RefSeq Size: 7182 bp
RefSeq ORF: 6348 bp
Locus ID: 4926
UniProt ID: [Q14980](#)
Cytogenetics: 11q13.4
Domains: M
MW: 238.3 kDa

Gene Summary: This gene encodes a large protein that forms a structural component of the nuclear matrix. The encoded protein interacts with microtubules and plays a role in the formation and organization of the mitotic spindle during cell division. Chromosomal translocation of this gene with the RARA (retinoic acid receptor, alpha) gene on chromosome 17 have been detected in patients with acute promyelocytic leukemia. Alternative splicing results in multiple transcript variants. [provided by RefSeq, Nov 2013]

Product images:



Circular map for RC215124



Western blot validation of overexpression lysate (Cat# [LY416823]) using anti-DDK antibody (Cat# [TA592569]). Left: Cell lysates from untransfected HEK293T cells; Right: Cell lysates from HEK293T cells transfected with RC215124 using transfection reagent PEI.