

## Product datasheet for **RC215123**

### CD130 (IL6ST) (NM\_002184) Human Tagged ORF Clone

#### Product data:

Product Type:	Expression Plasmids
Product Name:	CD130 (IL6ST) (NM_002184) Human Tagged ORF Clone
Tag:	Myc-DDK
Symbol:	CD130
Synonyms:	CD130; CDW130; GP130; HIES4; IL-6RB; sGP130
Mammalian Cell Selection:	Neomycin
Vector:	pCMV6-Entry (PS100001)
E. coli Selection:	Kanamycin (25 ug/mL)



[View online »](#)

**ORF Nucleotide Sequence:**

>RC215123 representing NM\_002184  
 Red=Cloning site Blue=ORF Green=Tags(s)

TTTTGTAATACGACTCACTATAGGGCGGCCGGAATTCGTCGACTGGATCCGGTACCGAGGAGATCTGCC  
 GCC**CGCATCGCC**

ATGTTGACGTTGCAGACTTGGCTAGTGCAGCCTTGTTTATTTTCTCACCAGTGAATCTACAGGTGAAC  
 TTCTAGATCCATGTGGTTATATCAGTCCTGAATCTCCAGTTGTACAACCTCATTCTAATTTCACTGCAGT  
 TTGTGTGCTAAAGGAAAAATGTATGGATTATTTTCATGTAATGCTAATTACATTGTCTGAAAAACAAAC  
 CATTTTACTATTCTAAGGAGCAATATACTATCATAAACAGAACAGCATCCAGTGTACCTTTACAGATA  
 TAGCTTCATTAATATTCAGCTCACTTGAACATTCTTACATTCCGACAGCTTGAACAGAATGTTTATGG  
 AATCACAATAATTTAGGCTTGCCTCCAGAAAAACCTAAAAATTTGAGTTGCATTGTGAACGAGGGGAAG  
 AAAATGAGGTGTGAGTGGGATGGTGAAGGAAACACACTGGAGACAACTTCACTTTAAATCTGAAT  
 GGGCAACACACAAGTTTGTGATTGCAAGCAAAACGTGACACCCACCTCATGCAGTGTGATTATTC  
 TACTGTGATTTTGTCAACATTGAAGTCTGGGTAGAAGCAGAGAATGCCCTTGGGAAGGTTACATCAGAT  
 CATATCAATTTTGTATCTGTATATAAAGTGAAGCCCAATCCGCCACATAATTTATCAGTGATCAACTCAG  
 AGGAACTGTCTAGTATCTTAAAATTGACATGGACCAACCAAGTATTAAGAGTGTATAATACTAAAATA  
 TAACATTCAATATAGGACCAAAGATGCCTCAACTTGGAGCCAGATTCTCCTGAAGACACAGCATCCACC  
 CGATCTTCATTCACTGTCCAAGACCTTAAACCTTTACAGAATATGTGTTTAGGATTCGCTGTATGAAGG  
 AAGATGGTAAGGGATACTGGAGTACTGGAGTGAAGAAGCAAGTGGGATCACCTATGAAGATAGACCATC  
 TAAAGCACCAAGTTTCTGGTATAAAATAGATCCATCCATACTCAAGGCTACAGAAGTGTACAACCTGTG  
 TGAAGACATTGCCTCCTTTTGAAGCAATGGAAAAATCTTGGATTATGAAGTACTCTCACAAGATGGA  
 AATCACATTTACAAAATTACACAGTTAATGCCACAAAACACTGACAGTAAATCTCACAATGATCCGTATCT  
 AGCAACCCCTAACAGTAAGAAATCTTGTGGCAAAATCAGATGCAGCTGTTTTAACTATCCCTGCCTGTGAC  
 TTTCAAGCTACTCACCTGTAATGGATCTTAAAGCATTCCCAAAGATAACATGCTTTGGGTGGAATGGA  
 CTACTCCAAGGGAATCTGTAAAGAAATATATACTTGAAGTGGTGTGTTATCAGATAAAGCACCTGTAT  
 CACAGACTGGCAACAAGAAGATGGTACCGTGCATCGCACCTATTTAAGAGGGAACCTAGCAGAGAGCAAA  
 TGCTATTTGATAACAGTTACTCCAGTATATGCTGATGGACCAGGAAGCCCTGAATCCATAAAGGCATACC  
 TTAACAAGCTCCACCTTCAAAGGACCTACTGTTCCGACAAAAAAGTAGGGAAAAACGAAGCTGTCTT  
 AGAGTGGGACCAACTTCTGTTGATGTTTCAAGATGGATTATCAGAAATTATACTATATTTTATAGAACC  
 ATCATTGGAATGAAACTGCTGTGAATGTGGATTCTTCCACACAGAATATACATTGTCTCTTTGACTA  
 GTGACACATTGTACATGGTACGAATGGCAGCATACACAGATGAAGGTGGGAAGGATGGTCCAGAATTCAC  
 TTTTACTACCCCAAAGTTTGTCTCAAGGAGAAAATTGAAGCCATAGTCGTGCCTGTTTGTCTAGCATTCTTA  
 TTGACAACTCTTCTGGGAGTGTCTTCTGCTTTAATAAGCGAGACCTAATTAACAAACACATCTGGCCTA  
 ATGTTCCAGATCCTTCAAAGAGTCATATGGCCAGTGGTACCTCACACTCCTCCAAGGCACAATTTTAA  
 TTCAAAAGATCAAATGTATTAGATGGCAATTTCACTGATGTAAGTGTGTGGAAATAGAAGCAAATGAC  
 AAAAAGCCTTTTCCAGAAGATCTGAAATCATTGGACCTGTTCAAAAAGGAAAAAATTAATACTGAAGGAC  
 ACAGCAGTGGTATTGGGGGTCTTCATGCATGTCATCTTCTAGGCCAAGCATTCTAGCAGTGTGAAAA  
 TGAATCTTCACAAAACACTTCGAGCAGTGTCCAGTATTCTACCGTGGTACACAGTGGCTACAGACACCAA  
 GTTCCGTAGTCCAAGTCTTCTCAAGATCCGAGTCTACCCAGCCCTTGTAGATTAGAGGAGCGGCCAG  
 AAGATCTACAATTAGTAGATCATGTAGATGGCGGTGATGGTATTTTGGCCAGGCAACAGTACTTCAAACA  
 GAACTGCAGTCAGCATGAATCCAGTCCAGATATTTACATTTTGAAGGTCAAAGCAAGTTTTCATCAGTC  
 AATGAGGAAGATTTTGTAGACTTAAACAGCAGATTTTCAGATCATATTTCACAATCCTGTGGATCTGGGC  
 AAATGAAAATGTTTCAAGGATTTTCTGCAGCAGATGCTTTTGGTCCAGTACTGAGGACAAAGTAGAAAAG  
 ATTTGAAACAGTTGGCATGGAGGCTGCGACTGATGAAGGCATGCCTAAAAGTTACTTACCACAGACTGTA  
 CGGCAAGGCGGTACATGCCTCAG

**ACGCGT**ACGCGGCCGCTCGAGCAGAAACTCATCTCAGAAGAGGATCTGGCAGCAAATGATATCCTGGATT  
 ACAAGGATGACGACGATAAAGTTTAA

**Protein Sequence:** >RC215123 representing NM\_002184  
Red=Cloning site Green=Tags(s)

```

MLTLQTWLVQALFIFLTTESTGELLDPGYSIPESPVVQLHSNFTAVCVLKEKCMDYFHVNANYIVWKTN
HFTIPKEQYTIINRTASSVTFTDIASLNIQLTCNILTFGQLEQNVYGITIISGLPPEKPKNLSCIVNEGK
KMRCEWDGGRETHLETNFTLKSEWATHKFADCKAKRDTPTCTVDYSTVYFVNIEVWVEAENALGKVTSD
HINFDVPYKVKPNPPHNLVINSEELSSILKLTWTNPSIKSVIILKYNIQYRTKDASTWSQIPPEDTAST
RSSFTVQDLKPFTEYVFRIRCMKEDGKGYWSDWSEEASGITIEDRPSKAPSFWYKIDPSHTQGYRTVQLV
WKTLPPEANGKILDYEVTLTRWKSHLQNYTVNATKLTVNLNDRYLATLTVRNLVGKSDAAVLTIPACD
FQATHPMDLKAFPKDNMLWVEWTPRESVKKYILEWCVLSDKAPCITDWQQEDGTVHRTYLRGNLAESK
CYLITVTPVYADGPGSPESIKAYLKQAPPSKGPTVRTKKVGKNEAVLEWDQLPVDVQNGFIRNYTIFYRT
IIGNETAENVVSSHTEYTLSSLTSDLYMVRMAAYTDEGGKDGPEFTFTTPKFAQGEIEAIVVPVCLAF
LTTLLGVLFCFNKRDLIKHHIWPVDPSPKSHIAQWSPHTPPRHNFNSKDQMYSDGNFTDVSVEIEAND
KKFPEDLKSLDLFKKEKINTEGHSSGIGSSCMSSSRPSISSSDENESSQNTSSTVQYSTVVHSGYRHHQ
VPSVQVFSRSESTQPLLDSEERPEDLQLVDHVDGGDILPRQQYFKQNCSEQHESPDI SHFERSKQVSSV
NEEDFVRLKQQISDHISQSCGSGQMKMFQEVSAADAFGPGTEGQVERFETVGMEEATDEGMPSYLPQTV
RQGGYMPQ
    
```

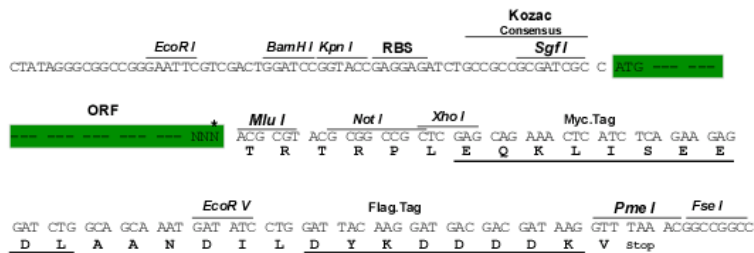
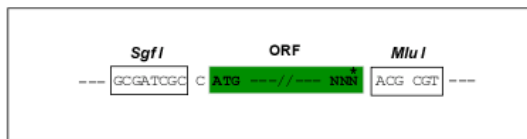
TRTRPLEQKLISEEDLAANDILDYKDDDDKV

**Chromatograms:** [https://cdn.origene.com/chromatograms/mk6163\\_h05.zip](https://cdn.origene.com/chromatograms/mk6163_h05.zip)

**Restriction Sites:** SgfI-MluI

**Cloning Scheme:**

Cloning sites used for ORF Shuttling:



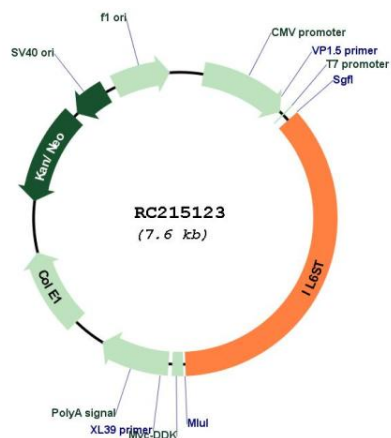
\* The last codon before the Stop codon of the ORF

**ACCN:** NM\_002184

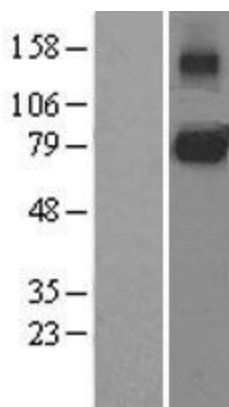
**ORF Size:** 2754 bp

<b>OTI Disclaimer:</b>	The molecular sequence of this clone aligns with the gene accession number as a point of reference only. However, individual transcript sequences of the same gene can differ through naturally occurring variations (e.g. polymorphisms), each with its own valid existence. This clone is substantially in agreement with the reference, but a complete review of all prevailing variants is recommended prior to use. <a href="#">More info</a>
<b>OTI Annotation:</b>	This clone was engineered to express the complete ORF with an expression tag. Expression varies depending on the nature of the gene.
<b>Components:</b>	The ORF clone is ion-exchange column purified and shipped in a 2D barcoded Matrix tube containing 10ug of transfection-ready, dried plasmid DNA (reconstitute with 100 ul of water).
<b>Reconstitution Method:</b>	<ol style="list-style-type: none"><li>1. Centrifuge at 5,000xg for 5min.</li><li>2. Carefully open the tube and add 100ul of sterile water to dissolve the DNA.</li><li>3. Close the tube and incubate for 10 minutes at room temperature.</li><li>4. Briefly vortex the tube and then do a quick spin (less than 5000xg) to concentrate the liquid at the bottom.</li><li>5. Store the suspended plasmid at -20°C. The DNA is stable for at least one year from date of shipping when stored at -20°C.</li></ol>
<b>Note:</b>	Plasmids are not sterile. For experiments where strict sterility is required, filtration with 0.22um filter is required.
<b>RefSeq:</b>	<a href="#">NM_002184.4</a>
<b>RefSeq Size:</b>	3242 bp
<b>RefSeq ORF:</b>	2757 bp
<b>Locus ID:</b>	3572
<b>UniProt ID:</b>	<a href="#">P40189</a>
<b>Cytogenetics:</b>	5q11.2
<b>Domains:</b>	FN3
<b>Protein Families:</b>	Druggable Genome, Secreted Protein, Transmembrane
<b>Protein Pathways:</b>	Cytokine-cytokine receptor interaction, Jak-STAT signaling pathway
<b>MW:</b>	103.54 kDa
<b>Gene Summary:</b>	The protein encoded by this gene is a signal transducer shared by many cytokines, including interleukin 6 (IL6), ciliary neurotrophic factor (CNTF), leukemia inhibitory factor (LIF), and oncostatin M (OSM). This protein functions as a part of the cytokine receptor complex. The activation of this protein is dependent upon the binding of cytokines to their receptors. vIL6, a protein related to IL6 and encoded by the Kaposi sarcoma-associated herpesvirus, can bypass the interleukin 6 receptor (IL6R) and directly activate this protein. Knockout studies in mice suggest that this gene plays a critical role in regulating myocyte apoptosis. Alternatively spliced transcript variants have been described. A related pseudogene has been identified on chromosome 17. [provided by RefSeq, May 2014]

Product images:



Circular map for RC215123



Western blot validation of overexpression lysate (Cat# [LY400797]) using anti-DDK antibody (Cat# [TA50011-100]). Left: Cell lysates from untransfected HEK293T cells; Right: Cell lysates from HEK293T cells transfected with RC215123 using transfection reagent MegaTran 2.0 (Cat# [TT210002]).