

Product datasheet for RC215117

NLRP7 (NM_139176) Human Tagged ORF Clone

Product data:

Product Type:	Expression Plasmids
Product Name:	NLRP7 (NM_139176) Human Tagged ORF Clone
Tag:	Myc-DDK
Symbol:	NLRP7
Synonyms:	CLR19.4; HYDM; NALP7; NOD12; PAN7; PYPAF3
Mammalian Cell Selection:	Neomycin
Vector:	pCMV6-Entry (PS100001)
E. coli Selection:	Kanamycin (25 ug/mL)
ORF Nucleotide Sequence:	>RC215117 representing NM_139176 Red=Cloning site Blue=ORF Green=Tags(s)

TTTTGTAATACGACTCACTATAGGGCGGCCGGAATTCGTCGACTGGATCCGGTACCGAGGAGATCTGCC
GCC**CGATCGCC**

ATGACATCGCCCCAGCTAGAGTGGACTCTGCAGACCCCTTCTGGAGCAGCTGAACGAGGATGAATTAAGA
GTTTCAAATCCCTTTTATGGGCTTTCCCTCGAAGACGTGCTACAGAAGACCCCATGGTCTGAGGTGGA
AGAGGCTGATGGCAAGAACTGGCAGAAATCTGGTCAACACCTCCTCAGAAAATTGGATAAGGAATGCC
ACTGTGAACATCTTGAAGAGATGAATCTCACGGAATTGTGAAGATGGCAAAGGCTGAGATGATGGAGG
ACGGACAGGTGCAAGAAATAGATAATCCTGAGCTGGGAGATGCAGAAGAAGACTCGGAGTTAGCAAAGCC
AGGTGAAAAGGAAGGATGGAGAAATCAATGGAGAAACAGTCTTTGGTCTGGAAGAACACCTTTTGGCAA
GGAGACATTGACAATTTCCATGACGACGCTCACTCTGAGAAACCAACGGTTCATTCCATTCTGAATCCCA
GAACACCCAGGAAGCTAACACCTTACACGGTGGTCTGCACGGCCCCGAGGCGTGGGAAAAACACGCT
GGCCAAAAAGTGTATGCTGGACTGGACAGACTGCAACCTCAGCCCAGCGCTCAGATACGCGTTTACCTC
AGCTGCAAGGAGCTCAGCCGCATGGGCCCTGCAGTTTGCAGAGCTGATCTCAAAGACTGGCCTGAAT
TGCAGGATGACATTCCAAGCATCCTAGCCCAAGCACAGAGAATCCTGTTCTGGTTCGATGGCCTTGATGA
GCTGAAAGTCCCACCTGGGGCGCTGATCCAGGACATCTGCGGGGACTGGGAGAAGAAGAAGCCGGTGCCC
GTCCTCCTGGGGAGTTTCTGAAGAGGAAGATGTTACCCAGGGCAGCCTTGTGGTCAACACGCGGCCCA
GGGACTGAGGGACCTCCAGCTCCTGGCGCAGCAGCCGATCTACGTAAGGGTGGAGGGCTTCTGGAGGA
GGACAGGAGGGCCTATTTCTGAGACACTTTGGAGACGAGGACCAAGCCATGCGTGCCTTTGAGCTAATG
AGGAGCAACGCGGCCCTGTTCCAGCTGGGCTCGGCCCCGCGGTGTGCTGGATTGTGTCACGACTCTGA
AGCTGCAGATGGAGAAGGGGAGGACCCGGTCCCCACCTGCCTCACCCGCACGGGCTGTTCTGCGTTT
CCTCTGCACGGGTTCCCGCAGGGCGCACAGCTGCGGGGCGCGCTGCGGACGCTGAGCCTCTGGCCGCG
CAGGGCCTGTGGGCGCAGATGTCCTGTTCACCCGAGAGGACCTGGAAAGGCTCGGGGTGCAGGAGTCCG
ACCTCCGTCTGTTCTGGACGGAGACATCTCCGCCAGGACAGAGTCTCAAAGGCTGCTACTCCTTCAT
CCACCTCAGTTCACGAGTTTCTCACTGCCCTGTTCTACGCCCTGGAGAAGGAGGAGGGGAGGACAGG



[View online >](#)

GACGGCCACGCTGGGACATCGGGGACGTACAGAAGCTGCTTCCGGAGAAGAAAGACTCAAGAACCCCG
 ACCTGATTCAAGTAGGACTTCTTATTCGGCCTCGCTAACGAGAAGAGAGCCAAAGGAGTTGGAGCCAC
 TTTTGGCTGCCGATGTACCCGGACATCAAACAGGAATTGCTGCAATGCAAAGCACATCTTCATGCAAA
 AAGCCCTATCCGTGACCGACCTGAAGGAGGTCTGGGCTGCCTGTATGAGTCTCAGGAGGAGGAGCTGG
 CGAAGTGGTGGTGGCCCCGTTCAAGGAAATTTCTATTCACCTGACAAATACTTCTGAAGTATGCATTG
 TTCCTTCAGCCTGAAGCATTGTCAAGACTTGCAAGAACTCTACTGCAGGTAGCAAAGGGGGTGTTCCTG
 GAGAATTACATGGATTTTGAAGTGGACATTGAATTTGAAAGCTCAAACAGCAACCTCAAGTTTCTGGAAG
 TGAACAAGCTTCTGTAGTGACTCTTCTGTGCGGATTCTTTGTGACCAGTAACCCGTAGCACCTGTCA
 TCTGCAGAAAGTGAGATTA AAAACGTCACCCCTGACACCGCGTACCCGGACTTCTGTCTTGCTTTCATT
 GGGAGAAGACCCTCACGCACCTGACCCTGGCAGGGCACATCGAGTGGGAACGCACGATGATGCTGATGC
 TGTGTGACCTGCTCAGAAATCATAAATGCAACCTGCAGTACCTGAGGTTGGGAGTCACTGTGCCACCC
 GGAGCAGTGGGCTGAATTCCTATGTCCTCAAAGCCAACCAAGTCCCTGAAGCACCTGCGTCTCTCAGCC
 AATGTGCTCCTGGATGAGGGTGCATGTTGCTGTACAAGACCATGACACGCCAAAACACTTCTGCAGA
 TGTTGTCGTTGAAAACGTGCTCTTACAGAAGCCAGTTGCAAGGACCTTGTCTGTCTTGGTTGTGAG
 CAAGAAGTGCACACCTGTGCTTGGCCAGAACCCATTGGGGATACAGGGGTGAAGTTTCTGTGTGAG
 GGCTTGAGTTACCTGATTGTAAGTGCAGACCTTGGTGTACAGCAATGACGATAAACCAAGCTTGGCT
 GTAGATATCTCTCAGAGGCGCTCCAAGAAGCTGCAGCCTCACAACCTGGACTTGAGTATCAACCAGAT
 AGCTCGTGGATTGTGGATTCTCTGTGAGCATTAGAGAATCCAACTGTAACTAAAACCTACGCCTC
 TGGAGCTGCTCCCTCATGCCTTCTATTGTGAGCATTGGATCTGCTCTCCTCAGCAATCAGAAGCTTG
 AAAGTCTGGACCTGGGCCAGAATCATTTGTGGAAGAGTGGCATAATTAAGCTCTTTGGGGTTCTAAGACA
 AAGAACTGGATCCTTGAAGATACTCAGGTTGAAGACCTATGAACTAATTTGAAATCAAGAAGCTGTTG
 GAGGAAGTGAAGAAAAGAAATCCCAAGCTGACTATTGATTGCAATGCTTCCGGGGCAACGGCACCTCCGT
 GCTGTGACTTTTTTTC

AGCGGACCGACGCGTACGCGGCCGCTCGAGCAGAAACTCATCTCAGAAGAGGATCTGGCAGCAAATGATATCC
 TGGATTACAAGGATGACGACGATAAGGTTAA

Protein Sequence:

>RC215117 representing NM_139176
 Red=Cloning site Green=Tags(s)

MTSPQLEWTLQTLLEQLNEDELKSFKSLWAFPLEDVLQKTPWSEVEEADGKKLAEILVNTSSENWIRNA
 TVNILEEMNLTELCKMAKAEMMEDGQVQEIDNPELGDAEEDSELAKPGEKEGWRNSMEKQSLVWKNTFWQ
 GDIDNFHDDVTLRNQRFIPFLNPRTPRKLTPYTVVLHGPAGVGKTTLAKKCMLDWTDCNLSPTRLRYAFYL
 SCKELSRMGPCSF AELISKDWPELQDDIPSILAQAQRILFVVDGLDELKVPFGALIQDICGDWEKPKVP
 VLLGSLKLRKMLPRAALLVTTTRPRALRDLQLLAQQPIYVRVEGFLEEDRRAYFLRHFGEDEDQAMRAFELM
 RSNAALFQLGSAPAVCWIVCTTLKQMEKGEDPVPTCLTRTGLFLRFLCSRFPQGAQLRGALRTL SLLAA
 QGLWAQMSVFHREDLERLGVQESDLRLFLDGDILRQDRVSKGCYSFIHLSFQQFLTALFYALEKEEGEDR
 DGHAWDIGDVQKLLSGEERLKNPDLIQVGHFLFGLANEKRAKELEATFGCRMSPDIKQELLQCKAHLHAN
 KPLSVTDLKEVLGCLYESQEELAKVVVAPFKEISIHNTNTSEVMHCSFSLKHCQDLQKLSLQVAKGVFL
 ENYDMFELDIEFESSNSNLKFLVQKSFSDSSVRILCDHVTRSTCHLQKVEIKNVTPDTAYRDFCLAFI
 GKKTHTLTLAGHIEWERTMMLMLCDLLRNHCNLYLRLGGHCATPEQWAEFFYVLKANQSLKHLRLSA
 NVLLDEGAMLLYKTMTRPKHFLQMLSLENCRLTEASCKDLAAVLVSKKLTCLAKNPIGDTGVKFLCE
 GLSYPDCKLQTLVLQQCSITKLGCRYLSEALQEACSLTNLDLSINQIARGLWILCQALENPNCLKHLRL
 WSCSLMPFYCQHLGSALLSNQKLETLDLQGNHLWKSIGIKLFGVLRQRTGSLKILRLKTYETNLEIKLL
 EEVKEKNPKLTIDCNASGATAPPCCDFFC

SGPTRRRLEQKLI SEEDLAANDILDYKDDDDKV

Chromatograms:

https://cdn.origene.com/chromatograms/mk8027_g05.zip

Restriction Sites:

SgfI-RsrII

Cloning Scheme:


ACCN: NM_139176

ORF Size: 3027 bp

OTI Disclaimer: The molecular sequence of this clone aligns with the gene accession number as a point of reference only. However, individual transcript sequences of the same gene can differ through naturally occurring variations (e.g. polymorphisms), each with its own valid existence. This clone is substantially in agreement with the reference, but a complete review of all prevailing variants is recommended prior to use. [More info](#)

OTI Annotation: This clone was engineered to express the complete ORF with an expression tag. Expression varies depending on the nature of the gene.

Components: The ORF clone is ion-exchange column purified and shipped in a 2D barcoded Matrix tube containing 10ug of transfection-ready, dried plasmid DNA (reconstitute with 100 ul of water).

- Reconstitution Method:**
1. Centrifuge at 5,000xg for 5min.
 2. Carefully open the tube and add 100ul of sterile water to dissolve the DNA.
 3. Close the tube and incubate for 10 minutes at room temperature.
 4. Briefly vortex the tube and then do a quick spin (less than 5000xg) to concentrate the liquid at the bottom.
 5. Store the suspended plasmid at -20°C. The DNA is stable for at least one year from date of shipping when stored at -20°C.

RefSeq: [NM_139176.3](#), [NP_631915.2](#)

RefSeq Size: 3331 bp

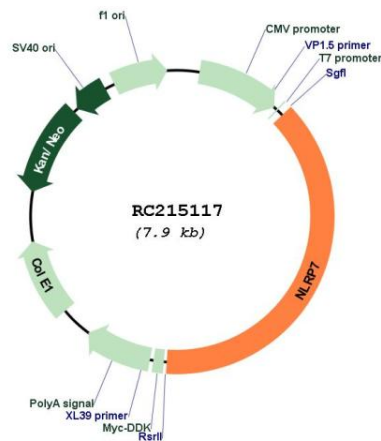
RefSeq ORF: 3030 bp

Locus ID: 199713

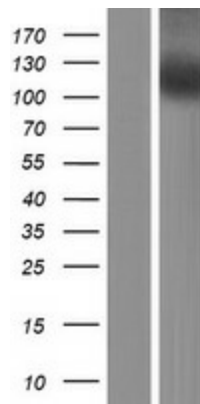
UniProt ID: [Q8WX94](#)
 Cytogenetics: 19q13.42
 MW: 114.7 kDa

Gene Summary: This gene encodes a member of the NACHT, leucine rich repeat, and PYD containing (NLRP) protein family. It has an N-terminal pyrin domain, followed by a NACHT domain, a NACHT-associated domain (NAD), and a C-terminal leucine-rich repeat (LRR) region. NLRP proteins are implicated in the activation of proinflammatory caspases through multiprotein complexes called inflammasomes. This gene may act as a feedback regulator of caspase-1-dependent interleukin 1-beta secretion. Alternative splicing results in multiple transcript variants encoding different isoforms. [provided by RefSeq, Jul 2008]

Product images:



Circular map for RC215117



Western blot validation of overexpression lysate (Cat# [LY408379]) using anti-DDK antibody (Cat# [TA50011-100]). Left: Cell lysates from untransfected HEK293T cells; Right: Cell lysates from HEK293T cells transfected with RC215117 using transfection reagent MegaTran 2.0 (Cat# [TT210002]).