

Product datasheet for RC215112

GSG1 (NM_001080555) Human Tagged ORF Clone

Product data:

Product Type:	Expression Plasmids
Product Name:	GSG1 (NM_001080555) Human Tagged ORF Clone
Tag:	Myc-DDK
Symbol:	GSG1
Mammalian Cell Selection:	Neomycin
Vector:	pCMV6-Entry (PS100001)
E. coli Selection:	Kanamycin (25 ug/mL)
ORF Nucleotide Sequence:	>RC215112 representing NM_001080555 Red=Cloning site Blue=ORF Green=Tags(s)

TTTTGTAATACGACTCACTATAGGGCGGCCGGAATTCGTCGACTGGATCCGGTACCGAGGAGATCTGCC
GCC**CGATCGCC**

ATGAGCGATCCCTCTCAACTGACTCAAAATGTTTGCCTCACCCAGGAGATGGAGCTCTCGAAGGCCTTCT
CTGGCCAGCGGACACTCCTATCTGCCATCCTCAGCATGCTATCACTCAGCTTCTCCACAACATCCCTGCT
CAGCAACTACTGGTTTGTGGGCACACAGAAGGTGCCAAGCCCTGTGCGAGAAAGGTCTGGCAGCCAAG
TGCTTTGACATGCCAGTGTCCCTGGATGGAGATACCAACACATCCACCCAGGAGGTGTTACAATAACA
GGGAGACTGGGGATGACCGTTCTCCTCCGGAGCTCCGGAGTGGCATGTGGCTATCCTGTGAGGAAAC
TGTGGAAGAACCAGCACTGCTCCATCCCCAGTCCCTGGAACAATTTAGAGCCCTTCGGTCCAGTGGTACA
GCGGCAGCAAAAGGGGAGAGGTGCCGAAGTTTCATTGAACTTACACCACCAGCCAAGAGAGAAATCCTAT
GGTTATCCCTGGGAACGCAGATCACCTACATCGGACTTCAATTCATCAGCTTCTCCTGCTACTAACAGA
CTTGCTACTCACTGGAAACCCTGCCTGTGGGCTCAAAGTACAGCGCCTTTGCTGCTGTTTCTCTGCTCCTG
TCAGGTCTCCTGGGGATGGTGGCCACATGATGTATTACAAGTCTTCCAAGCGACTGTCAAAGTGGGTC
CAGAAGACTGGAGACCACATGTTTGAATTATGGCTGGGCTTCTACATGGCCTGGCTCTCCTTACCTG
CTGCATGGCGTCGGCTGTACCACCTTCAACACGTACACCAGGATGGTGTGGAGTTCAAGTGAAGCAT
AGTAAGAGCTTCAAGGAAAACCCGAAGTGCCTACCACATCACCATCAGTGTTCCTCGGGGCTGTCAA
GTGCAGCCCCACCGTGGTCCCTTTGACCAGCTACCACAGTATCATAATCAGCCATCCACTCTGTCTC
TGAGGGAGTGCAGTTCTACTCCGAGCTGCGGAACAAGGGATTTCAAGAGGGGCCAGCCAGGAGCTGAAA
GAAGCAGTTAGGTCATCTGTAGAGGAAGAGCAGTGT

ACGCGTACGCGGCCGCTCGAGCAGAAACTCATCTCAGAAGAGGATCTGGCAGCAAATGATATCCTGGATT
ACAAGGATGACGACGATAAGGTTTAA



[View online »](#)

Protein Sequence: >RC215112 representing NM_001080555
Red=Cloning site Green=Tags(s)

MSDPSQLTQNVCLTQEMELSKAFSGQRTLLSAILSMLSLSFSTTSLLSNYWVFGTQKVPKPLCEKGLAAK
 CFDMPVSLDGDNTSTQEVVQYNWETGDDRF SFRSFRSGMWLSCEETVEEPALLHPQSWKQFRALRSSGT
 AAKGERCRSFIELTPPAKREILWLSLGTQITYIGLQFISFLLLLDLLLLTGNPACGLKLSAFAAVSSVL
 SGLLGMVAHMMYSQVFQATVNLGPEDWRPHVWNYGWAFYMAWLSFTCCMASAVTTFNTYTRMVLEFKCKH
 SKSFKENPNCLPHHHQCFPRRLSSAAPT VGPLTSYHQYHNQPIHSVSEGVDYFSELRNKGQFQASQELK
 EAVRSSVEEEQC

TRTRPLEQKLISEEDLAANDILDYKDDDDKV

Chromatograms: https://cdn.origene.com/chromatograms/mk8054_h02.zip

Restriction Sites: SgfI-MluI

Cloning Scheme:

Cloning sites used for ORF Shuttling:



* The last codon before the Stop codon of the ORF

ACCN: NM_001080555

ORF Size: 1086 bp

OTI Disclaimer: The molecular sequence of this clone aligns with the gene accession number as a point of reference only. However, individual transcript sequences of the same gene can differ through naturally occurring variations (e.g. polymorphisms), each with its own valid existence. This clone is substantially in agreement with the reference, but a complete review of all prevailing variants is recommended prior to use. [More info](#)

OTI Annotation: This clone was engineered to express the complete ORF with an expression tag. Expression varies depending on the nature of the gene.

Components: The ORF clone is ion-exchange column purified and shipped in a 2D barcoded Matrix tube containing 10ug of transfection-ready, dried plasmid DNA (reconstitute with 100 ul of water).

Reconstitution Method:

1. Centrifuge at 5,000xg for 5min.
2. Carefully open the tube and add 100ul of sterile water to dissolve the DNA.
3. Close the tube and incubate for 10 minutes at room temperature.
4. Briefly vortex the tube and then do a quick spin (less than 5000xg) to concentrate the liquid at the bottom.
5. Store the suspended plasmid at -20°C. The DNA is stable for at least one year from date of shipping when stored at -20°C.

RefSeq: [NM_001080555.4](#)

RefSeq Size: 2055 bp

RefSeq ORF: 1089 bp

Locus ID: 83445

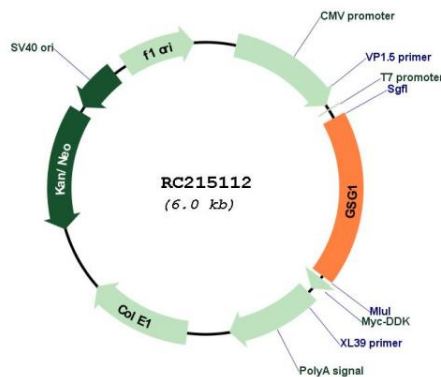
Cytogenetics: 12p13.1

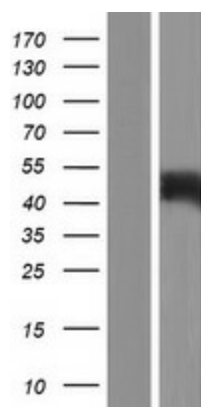
Protein Families: Transmembrane

MW: 40.5 kDa

Gene Summary: May cause the redistribution of PAPOLB from the cytosol to the endoplasmic reticulum. [UniProtKB/Swiss-Prot Function]

Product images:





Western blot validation of overexpression lysate (Cat# [LY421104]) using anti-DDK antibody (Cat# [TA50011-100]). Left: Cell lysates from untransfected HEK293T cells; Right: Cell lysates from HEK293T cells transfected with RC215112 using transfection reagent MegaTran 2.0 (Cat# [TT210002]).