

Product datasheet for RC215110

UBE3C (NM_014671) Human Tagged ORF Clone

Product data:

Product Type:	Expression Plasmids
Product Name:	UBE3C (NM_014671) Human Tagged ORF Clone
Tag:	Myc-DDK
Symbol:	UBE3C
Synonyms:	HECTH2
Mammalian Cell Selection:	Neomycin
Vector:	pCMV6-Entry (PS100001)
E. coli Selection:	Kanamycin (25 ug/mL)
ORF Nucleotide Sequence:	>RC215110 representing NM_014671 Red=Cloning site Blue=ORF Green=Tags(s)

TTTTGTAATACGACTCACTATAGGGCGGCCGGAATTCGTCGACTGGATCCGGTACCGAGGAGATCTGCC
GCC**CGATCGCC**

ATGTTTCAGCTTCGAAGGCGACTTCAAGACGCGGCCAAGGTGTCCCTTGGCGGCGGAGCAGGAAGGAGG
AAAAGGCTTCTCTTTTACATCGTACTCAGGAAGAAAGAAGAAAGAGAGAGGAAGAAAGGCGAAGGTTGAA
AAATGCAATAATTATCCAGTCATTTATTCGAGGCTATAGAGACAGAAAACAGCAATATCCATCCAAAGA
AGTGCATTTGATCGCTGTGCTACCTTGTACAGTCCGGGGCGCTTTCCATTGCTAATGGCCCAACC
TTACCCTTTTGGTAAGGCAGCTTCTGTTTTTTACAAACAAAATGAAGACTCAAAACGTTTGATATGGCT
GTATCAGAACTTAATTAACACAGCTCTCTGTTTGTCAAGCAGTTGGATGGATCTGAGAGACTTACATGC
TTATTTTCAGATAAAAAGATTGATGAGCCTCTGTTGCAAGTTGCTGCAAACTGTAATGATGACAGTTTGA
ATGTTGCACTTCCAATGAGAATGCTTGAAGTATTTTCGCTGAGAATACTTACTTGCCTGTTTTACAAGA
TGCTAGCTATGTGGTGTCAAGTATTGAACAAATTTTGCCTACATGATTCACAATGGGTATTATAGGTCT
CTATATTTGTTGATTAACAGCAAGCTTCCATCAAGTATTGAATATTCTGATTTATCTCGAGTTTCTATAG
CAAAAATTTTGTAGAGAATGTTCTAAAACCATTCACCTTTACTTACAACCTGTCGGGAAGGTGCGAG
GCAACAAGTTTTTACAGCCTTACAGAGGAGTTTCTGGCAGCACCTTTTACAGATCAGATTTTTTCATTTT
ATCATTCCGGCGCTTGCAGATGCGCAGACCGTTTTCCCTTACGAGCCCTTCTGAATGCCTGTTGTTAA
TAGAGAGTAGATGTTCAAGAAAGAGTGGTGGAGCACCTGGCTTTTCTATTTTCGTTTTAACTGTTGGCGA
AAATTATTTGGGGCCCTCTCTGAGGAAGGCTGCTGGTGTATTTGCGGGTGTGTCAGACCTTCTCTCT
CAGTTACCAGTCTCTCTGCCAGCGGAGCTGTACGACTCAGCCAGTACTCTGAGGAGGAGAGTGAAG
AAGCCGACAAGCCCTCAAGCCCGGAGGATGGCAGACTGTCAGTATCATACATAACAGAGGAATGCCTGAA
GAAGCTGGACACAAGCAGCAGACCAACACCCTGCTCAACCTGGTGTGGAGGGACTCTGCGAGCGAGGAG
GTCTTACCACCATGGCTCCGCTGCCACACGCTGATGGTGCAGCACCGCATGATGGTACCCAAAGTCA
GGCTTCTCTACAGTTTAGCCTTTAATGCCAGGTTTCTGAGACATCTTTGGTTTCTAATATCTTCCATGTC
AACACGGATGATCAGGGTCTATGGTACCCTGCTTCCAGGTGATATCCAGGGTCTCCTATGTCTTTT



GAAGATTCTAGTCGAATCATCCCCTCTTTTATCTTTTGTAGTCCTTGTTTAGTCATTCACTAATTTCCA
TACATGATAACGAATCTTTCGGTGATCCCATAGAAGTTGTAGGTCAAAGACAATCATCAATGATGCCTTT
TACTTTAGAAGAGCTGATAATGTTGTCTCGATGCCTTCGAGATGCATGCCTGGGGATCATCAAGTTGGCT
TATCCAGAAACCAAGCCAGAAGTTCGAGAAGAATATATTACAGCATTTCAGAGTATTGGAGTTACTACTA
GCTCTGAAATGCAACAATGCATACAGATGGAACAGAAAAGATGGATTAGTATTTAAGGTTATCACCAA
TCTAGTGAAAAATGTTGAAGTCCAGAGACACGAGGAGAAAATTTTGTCTCCAACCACTGGCTGTGAGAA
CAAGAAGATATTAAGCAGATAAGGTCACTCAGCTCTATGTGCCAGCATCCAGACATGTGTGGAGTTCC
GGCGGATGGGGAGGATAGGCCCGCTGCAGTCCACCCTGGACGTGGGTTTGGAGTCCCGCCGCTGTCTGT
GTCTGAGGAAAGACAGCTTGCTGTCTGACAGAGTTGCCTTTTGTGGTCCATTTGAGGAACGAGTAAAG
ATCTTTTACAGAGTTGATTTATGCAGATAAGCAAGAAGTTCAAGGAGATGGTCCATTTCTGGATGGAATTA
ATGTCACAATAAGAAGAAATACATTTTGAAGATGCTTATGACAACTTTCTCCAGAAAATGAGCCTGA
TTTGAAAAAGCGGATCCGTGTGCACTTGTCAATGCCATGGCTGGATGAAGCTGGCATTGATGGTGGT
GGTATTTTTCAGAGAGTTTTTAAATGAAGTACTGAAGTCAAGATTAACCCCAACCCAGGGTTCTTTAAGA
CTACTAATGAAGGGCTTCTGTACCCCAACCCGGCTGCTCAGATGCTTGTGGGAGATTCTTTTCCAGACA
TTACTACTTCTAGGCAGAAATGCTTGGAAAGGCTCTCTATGAGAACATGTGGTGGAGCTGCCCTTTGCA
GGCTTCTTTCTTCCAAGTTGCTTGGAAACAGTGCAGCTGGACATTACCACCTCGCCTCCCTAGACC
CTGAGGTGTATAAGAATTTGCTCTTTCTGAAGAGCTACGAAGACGATGTGGAGGAGCTTGGGCTGAAGT
CACTGTGGTGAACAATGACCTGGGAGAGGCGCAGGTAGTTGAACTAAAATTCGGTGGGAAAGACATCCCT
GTCACCAGCGCAACCGGATTGCGTACATCCACTTGGTGGCAGACTACAGGCTGAACAGGCAGATCCGCC
AGCACTGCCTGGCTTCCGCCAGGGCTTGCCAATGTCGTGAGCTCGAGTGGCTCCGAATGTTTGTATCA
GCAAGAAATTCAGGATTAATTTCTGGTGCACAAGTCCCATAGCCTAGAGGACCTAAAATCCTTTACA
AACTATTCAGGAGGCTATTCGACAGCCATCCTGTTATTAAGGCTTCTGGAGAGTTGTGGAAGGGTTCA
CTGATGAAGAAAAGCGCAAACTGCTGAAGTTTGTAAACAAGTCTCTCGACCCCTCTCTTGGGGTTTAA
GGAGTTGTATCCCGCATTTTGTATTACAACGAGGCTCCGACCTTGGAGCGCTCCCAACAGCCAGCACC
TGCATGAACCTGCTGAAGCTCCCGAGTTCTATGACGAGACACTTTTGGGAAGTAAACTTCTCTATGCGA
TTGAATGTCCGCTGGCTTTGAGCTGAGC

ACGCGTACGCGGCCGCTCGAGCAGAACTCATCTCAGAAGAGGATCTGGCAGCAAATGATATCCTGGATT
ACAAGGATGACGACGATAAGGTTTAA

Protein Sequence:

>RC215110 representing NM_014671
Red=Cloning site Green=Tags(s)

MFSFEGDFKTRPKVSLGGASRKEEKASLLHRTQEERRKREEERRRLKNAIIQSFIRGYRDRKQQYSIQR
SAFDRCATLSQSGGAFPIANGPNLTLVLRQLFFYKQNEDESKRLIWLQNLKIHSSLFVKQLDGSERLTC
LFQIKRMLSLCCRLLQNCNDDSLNVALPMRMLVFSSENTYLPVLQDASYVVSVIEQILHYMIHNGYYRS
LYLLINSKLPSSIEYSDLSRVPIAKILLENLKPLHFTYNSCPEGARQQVFATTEEFLLAAPPFTDQIFHF
IIPALADAQTVFPYEPFLNALLIESRCSRKSGGAPWLFYFVLTVGENYLGALSEEGLLVYLRVLQTFLS
QLPVSPASASCHDSASDSEEESEADKPSSPEDGRLSVSYITEECLKKLDTKQNTNLLNLVWRDSASEE
VFTTMASVCHTMLVQHRMMVPKVRLLYSLAFNARFLRHLWFLISSMSTRMITGSMVPLLQVIRSPPMSF
EDSSRIIPLFYLFSSLFSHLSIISHDNEFFGDPTEVVGQRQSSMPPTLEELIMLSRCLRDAACLGIIKLA
YPETKPEVREEYITAFQSIGVTTSEMQQCIQMEQKRWIQLFKVITNLVKMLKSRDTRRNFPPNHWSLSE
QEDIKADKVTQLYVPASRHVWRFRMRIGPLQSTLDVGLSPPLSVSEERQLAVLTELFPVVPFEERVK
IFQRLIYADKQEVQDGPFLDGINVTIRRNYIYEDAYDKLSPENEPDLKKRIRVHLLNAHGLDEAGIDGG
GIFREFLNELLKSGFNPNQGFKTTNEGLLYPNPAAQMLVGDSEFARHYYFLGRMLGKALYENMLVELPFA
GFFLSKLLGTSADVDIHHLASLDPEVYKNLLFLKSYEDDVEELGLNFTVNNDLGEAQVVELKFGGKDIP
VTSANRIAYIHLVADYRLNRQIRQHLAFRQGLANVVSLEWLRMFDQQEIQVLSGAQVPISELDLKSFT
NYSGGYSADHPVIKVFWRVVEGFDEEKRLKLFVTSCSRPPLLGFKELYPAFCIHNGGSDLERLPTAST
CMNLLKLPFYDETLLRSKLLYAIECAAGFELS

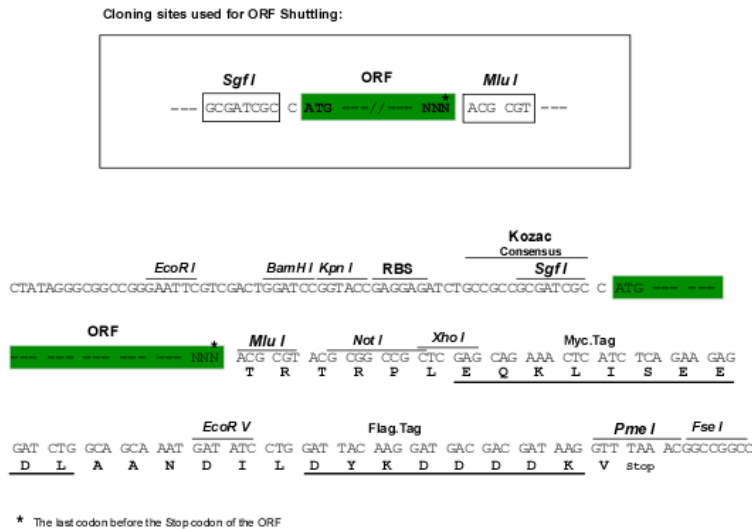
TRTRPLEQKLI SEEDLAANDILDYKDDDDKV

Chromatograms:

https://cdn.origene.com/chromatograms/mk8027_g06.zip

Restriction Sites: SgfI-MluI

Cloning Scheme:



ACCN: NM_014671

ORF Size: 3249 bp

OTI Disclaimer: The molecular sequence of this clone aligns with the gene accession number as a point of reference only. However, individual transcript sequences of the same gene can differ through naturally occurring variations (e.g. polymorphisms), each with its own valid existence. This clone is substantially in agreement with the reference, but a complete review of all prevailing variants is recommended prior to use. [More info](#)

OTI Annotation: This clone was engineered to express the complete ORF with an expression tag. Expression varies depending on the nature of the gene.

Components: The ORF clone is ion-exchange column purified and shipped in a 2D barcoded Matrix tube containing 10ug of transfection-ready, dried plasmid DNA (reconstitute with 100 ul of water).

- Reconstitution Method:
1. Centrifuge at 5,000xg for 5min.
 2. Carefully open the tube and add 100ul of sterile water to dissolve the DNA.
 3. Close the tube and incubate for 10 minutes at room temperature.
 4. Briefly vortex the tube and then do a quick spin (less than 5000xg) to concentrate the liquid at the bottom.
 5. Store the suspended plasmid at -20°C. The DNA is stable for at least one year from date of shipping when stored at -20°C.

RefSeq: [NM_014671.3](#)

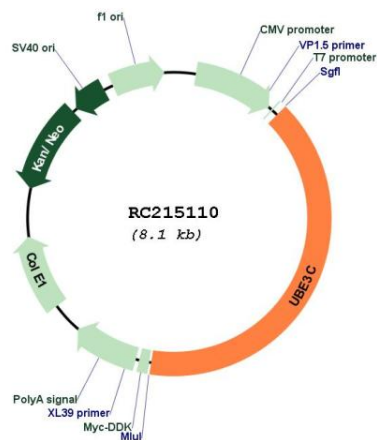
RefSeq Size: 5160 bp

RefSeq ORF: 3252 bp

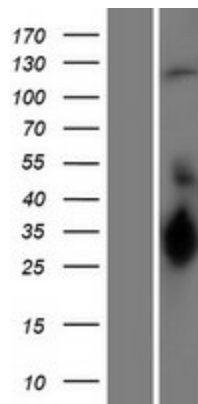
Locus ID: 9690

UniProt ID:	Q15386
Cytogenetics:	7q36.3
Domains:	IQ, HECT
Protein Families:	Druggable Genome
Protein Pathways:	Ubiquitin mediated proteolysis
MW:	123.7 kDa
Gene Summary:	E3 ubiquitin-protein ligase that accepts ubiquitin from the E2 ubiquitin-conjugating enzyme UBE2D1 in the form of a thioester and then directly transfers the ubiquitin to targeted substrates. Can assemble unanchored poly-ubiquitin chains in either 'Lys-29'- or 'Lys-48'-linked polyubiquitin chains. Has preference for 'Lys-48' linkages. It can target itself for ubiquitination in vitro and may promote its own degradation in vivo.[UniProtKB/Swiss-Prot Function]

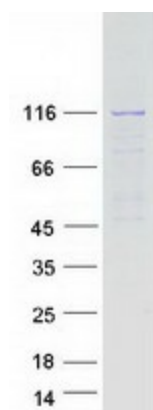
Product images:



Circular map for RC215110



Western blot validation of overexpression lysate (Cat# [LY415125]) using anti-DDK antibody (Cat# [TA50011-100]). Left: Cell lysates from untransfected HEK293T cells; Right: Cell lysates from HEK293T cells transfected with RC215110 using transfection reagent MegaTran 2.0 (Cat# [TT210002]).



Coomassie blue staining of purified UBE3C protein (Cat# [TP315110]). The protein was produced from HEK293T cells transfected with UBE3C cDNA clone (Cat# RC215110) using MegaTran 2.0 (Cat# [TT210002]).