

Product datasheet for **RC215103**

GTPBP1 (NM_004286) Human Tagged ORF Clone

Product data:

Product Type:	Expression Plasmids
Product Name:	GTPBP1 (NM_004286) Human Tagged ORF Clone
Tag:	Myc-DDK
Symbol:	GTPBP1
Synonyms:	GP-1; GP1; HSPC018
Mammalian Cell Selection:	Neomycin
Vector:	pCMV6-Entry (PS100001)
E. coli Selection:	Kanamycin (25 ug/mL)



[View online »](#)

ORF Nucleotide
Sequence:

>RC215103 representing NM_004286
Red=Cloning site Blue=ORF Green=Tags(s)

TTTTGTAATACGACTCACTATAGGGCGGCCGGGAATTCGTCGACTGGATCCGGTACCGAGGAGATCTGCC
GCC**CGGATCGCC**

ATGGCGACGGAGCGCAGTCGCTCCGCGATGGACTCGCCGGTCCCGCCTCTATGTTCCGCCCCGAGCCCA
GCTCCCCGGGGCGGCCAGGGCCGCGCCGCGCCGCGCCGACTCCACGGCGGCTTTGACTCGGACTGCAG
CGAGGACGGCGAGGCGCTCAACGGCGAGCCAGAGCTGGACCTCACCAGCAAGCTGGTTCTAGTGAGCCCT
ACATCAGAGCAGTATGACAGCCTACTTCGCGAGATGTGGGAGAGGATGGACGAGGGATGCGGAGAGACCA
TATATGTCATTGGGCAGGGATCAGATGGGACTGAGTATGGGCTGAGTGAAGCTGACATGGAGGCCTCCTA
CGCCACAGTGAAGAGCATGGCGGAACAGATAGAGGCCGATGTCATCCTTCTGCGGAAACGGCAAGAAGCT
GGGGGCCCGTGCCTGATTACCTGGTCCGGAACGAGTAGGAGACAATGACTTCTGGAGGTGAGGGTAG
CAGTGGTGGGCAACGTGGATGCTGGCAAAGCACGCTTCTGGGGTCTGACACATGGGAGCTGGACAA
TGCCCGAGGCTTTGCCCGCCAGAACTCTCCGCCACAAACATGAAATTGAATCTGGTCGCACCAGCAGT
GTGGGCAACGACATTCTGGGCTTTGACAGTGAAGCAATGTAGTGAACAAGCCTGACAGCCACGGCGGCA
GCCTGGAGTGGACCAAGATCTGTGAGAAGTCCACGAAAGTCATTACCTTCATCGACTTGGCTGGTATGA
GAAGTACCTGAAAACCACTGTCTTCGGCATGACAGGCCATCTGCCTGACTTCTGCATGCTCATGGTGGG
AGCAATGCTGGCATCGTGGGGATGACCAAAGAACACCTGGGCTTGGCACTGGCACTCAATGTACCTGTCT
TTGTGGTAGTCACCAAGATTGACATGTCTCCTGCCAACATCCTGCAAGAAACCTGAAGCTGTTACAGCG
CCTGCTGAAGTACCAGGCTGCCGAAGATCCCCGTGCTGGTGCAGAGCAAAGATGATGTGATTGTCACA
GCCTCAAACCTCAGCTCTGAAAGGATGTGCCGATATCCAGATCTCAAACGTTACAGGCGAGAACCTAG
ATCTGCTGAAGATGTTCCCTCAACCTCCTCTCCCCCGCACCAAGTACAGGGAGGAGGACCTGCTGAGTT
TCAGATTGATGACACCTACTCCGTCCCGGGTGTGGGGACAGTGGTTTCGGGGACAACACTGAGAGGCCTG
ATCAAGCTGAATGACACGCTGCTGCTGGGCCAGACCCCTTGGGTAACCTCCTGTCCATTGCTGTCAAAT
CCATCCATCGCAAGCGCATGCCTGTCAAGGAGGTGCGGGGTGGCCAGACAGCATCCTTTGCGCTGAAGAA
GATCAAGCGCTCGTCCATCCGGAAGGGCATGGTATGGTTTCCCCACGTTTGAATCCCCAAGCCTCCTGG
GAGTTTGAGGCCGAGATTCTCGTCTCCACCACCCACCACAATTAGCCCGCGCTACCAGGCCATGGTGC
ACTGTGGGAGCATCAGGCAGACAGCCACCATTCTGAGCATGGACAAGGACTGTCTGCGCACTGGGACAA
GGCCACTGTACACTTCCGCTTCATCAAGACCCCTGAGTACCTGCACATAGACCAGCGGCTGGTGTCCGG
GAAGGCCGACCAAGGCTGTCGGCACCATCAACCAAGCTCCTCCAGACCACCAACAACCTCCCAATGAACT
CCAAGCCGAGCAGATTAATGAGTGCAGCAAAAAGGGCCCCCTGACGAAACGAGACGAGGGGGGCC
GTCTGGTGGGCCAGCAGTAGGAGCACCCACCTGGAGATGAAGCCTCCTCTGTAGGGGACAGGGCAACCA
GCTGCTCCAGCAATCTCCAGCCTCAGCCTAAGCCAGCAGTGGAGGCCGGCGACGAGGGGGCCAGCGCC
ACAAGGTGAAGTCCCAGGGGGCTGTGTGACTCCTGCCAGCGGCTGC

ACGCGTACGCGGCCGCTCGAGCAGAACTCATCTCAGAAGAGGATCTGGCAGCAATGATATCCTGGATT
ACAAGGATGACGACGATAAGGTTTAA

Protein Sequence: >RC215103 representing NM_004286
Red=Cloning site Green=Tags(s)

MATERSRSAMDSPVPASMFAPESPSPGAARAAAAAARLHGGFSDDCSEGEALNGEPELDLTSKLVLVSP
TSEQYDSSLRQMWERMDEGCGETIYVIGQSDGTEYGLSEADMEASYATVKMAEQIEADVILLRERQEA
GGRVRDYLVRKRVGDNDLFLEVRVAVVGNVDAGKSTLLGVLTHGELDNRGRFARQKLF RHKHEIESGRTSS
VGNDILGFDSEGNVVNKPD SHGGSLEWTKICEKSTKVITFIDLAGEHEKYLKTTVFGMTGHLPDFCMLMVG
SNAGIVGMTKEHLGLALALNVPVVFVVVTKIDMCPANILQETLKLQRLLKSPGCRKIPVLVQSKDDVIVT
ASNFSSERMCPIFIQISNVTGENLDLLKMFNLNLLSPRTSYREEPAEFQIDDTYSVPGVGTVVSGTTLRGL
IKLNDTLLGPDPLGNFLSIAVKSIIHRKMPVKEVRGGQTASFALKKIKRSSIRKGMVMVSPRLNPQASW
EFEAEILVLHPTTISPRYQAMVHCGRQATILSMDKDCLRTGDKATVHFRFIKTPEYLHIDQRLVFR
EGRTKAVGTITKLLQTTNNSPMNSKPQQIKMQSTKKGPLTKRDEGGPSGGPAVGAPPPGDEASSVAGQP
AASSNLQPQPKPSSGRRRGQRHKVKVSGACVTPASGC

TRTRPLEQKLISEEDLAANDILDYKDDDDKV

Chromatograms: https://cdn.origene.com/chromatograms/mk6483_b01.zip

Restriction Sites: SgfI-MluI

Cloning Scheme:



ACCN: NM_004286

ORF Size: 2007 bp

OTI Disclaimer: The molecular sequence of this clone aligns with the gene accession number as a point of reference only. However, individual transcript sequences of the same gene can differ through naturally occurring variations (e.g. polymorphisms), each with its own valid existence. This clone is substantially in agreement with the reference, but a complete review of all prevailing variants is recommended prior to use. [More info](#)

OTI Annotation: This clone was engineered to express the complete ORF with an expression tag. Expression varies depending on the nature of the gene.

Components: The ORF clone is ion-exchange column purified and shipped in a 2D barcoded Matrix tube containing 10ug of transfection-ready, dried plasmid DNA (reconstitute with 100 ul of water).

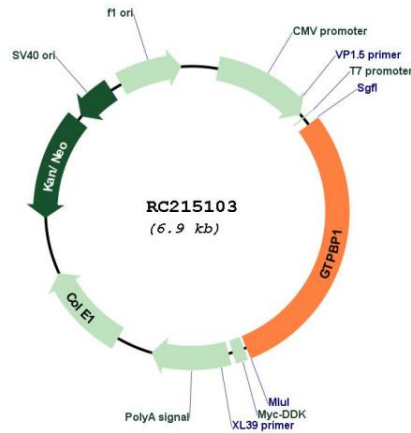
Reconstitution Method:

1. Centrifuge at 5,000xg for 5min.
2. Carefully open the tube and add 100ul of sterile water to dissolve the DNA.
3. Close the tube and incubate for 10 minutes at room temperature.
4. Briefly vortex the tube and then do a quick spin (less than 5000xg) to concentrate the liquid at the bottom.
5. Store the suspended plasmid at -20°C. The DNA is stable for at least one year from date of shipping when stored at -20°C.

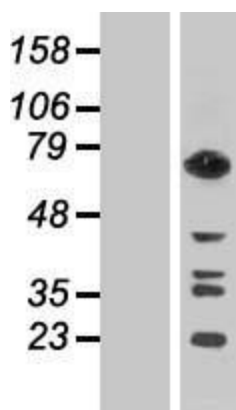
RefSeq: [NM_004286.5](#)
RefSeq Size: 5074 bp
RefSeq ORF: 2010 bp
Locus ID: 9567
UniProt ID: [O00178](#)
Cytogenetics: 22q13.1
Domains: GTP_EFTU, GTP_EFTU_D3, GTP_EFTU_D2
MW: 72.3 kDa

Gene Summary: This gene is upregulated by interferon-gamma and encodes a protein that is a member of the AGP11/GTPBP1 family of GTP-binding proteins. A structurally similar protein has been found in mouse, where disruption of the gene for that protein had no observable phenotype. [provided by RefSeq, Jul 2008]

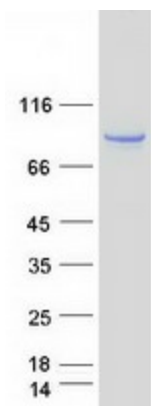
Product images:



Circular map for RC215103



Western blot validation of overexpression lysate (Cat# [LY418076]) using anti-DDK antibody (Cat# [TA50011-100]). Left: Cell lysates from untransfected HEK293T cells; Right: Cell lysates from HEK293T cells transfected with RC215103 using transfection reagent MegaTran 2.0 (Cat# [TT210002]).



Coomassie blue staining of purified GTPBP1 protein (Cat# [TP315103]). The protein was produced from HEK293T cells transfected with GTPBP1 cDNA clone (Cat# RC215103) using MegaTran 2.0 (Cat# [TT210002]).