

Product datasheet for **RC215093**

Pea3 (ETV4) (NM_001986) Human Tagged ORF Clone

Product data:

Product Type:	Expression Plasmids
Product Name:	Pea3 (ETV4) (NM_001986) Human Tagged ORF Clone
Tag:	Myc-DDK
Symbol:	Pea3
Synonyms:	E1A-F; E1AF; PEA3; PEAS3
Mammalian Cell Selection:	Neomycin
Vector:	pCMV6-Entry (PS100001)
E. coli Selection:	Kanamycin (25 ug/mL)



[View online »](#)

ORF Nucleotide Sequence:

>RC215093 representing NM_001986
 Red=Cloning site Blue=ORF Green=Tags(s)

TTTTGTAATACGACTCACTATAGGGCGGCCGGGAATTCGTCGACTGGATCCGGTACCGAGGAGATCTGCC
 GCC**GCGATCGCC**

ATGGAGCGGAGGATGAAAGCCGATACTTGGACCAGCAAGTGCCTACACCTTCAGCAGCAAATCGCCCC
 GAAATGGGAGCTTGC CGAAGCGCTGATCGGCCGCTGGGAAGCTCATGGACCCGGCTCCCTGCCGCC
 CCTCGACTCTGAAGATCTCTCCAGGATCTAAGTCACTTCCAGGAGACGTGGCTCGCTGAAGCTCAGGTA
 CCAGACAGTGTGAGCAGTTTGTCTGATTTCCATTAGAAAACCTAGCTTTCCACAGCCCCACCACCA
 GGATCAAGAAGGAGCCCCAGAGTCCCCGCACAGACCCGGCCCTGTCTGCAGCAGGAAGCCGCACTCCC
 CTACCACCATGGCGAGCAGTGCCTTTACTCCAGTGCCTATGACCCCCCAGACAAATCGCCATCAAGTCC
 CCTGCCCTGGTGCCTTGACAGTGCCTTACAGCCCTTTCCCGGGCAGAGCAACGGAATTTCTGGA
 GATCCTCTGGCACCTCCAGCCCCACCTGGCCATGGGTACCTCGGGAACATAGCTCCGCTTCCAGCA
 GCCCTGGACATTTGCCACTCCTCACATCTCAGGGAGGGGGCCGGGAACCCCTCCAGCCCCCTACCAA
 CACCAGCTGTCCGAGCCCTGCCACCCTATCCCCAGCAGAGCTTAAAGCAAGAATACCATGATCCCTGT
 ATGAACAGGCGGGCCAGCCAGCCGTGGACCAGGGTGGGGTCAATGGGCACAGGTACCCAGGGCGGGGGT
 GGTGATCAAACAGGAACAGACGGACTTCGCTACGACTCAGATGTACCAGGGTGCATCAATGTACCTC
 CACACAGAGGGCTTCTCTGGGCCCTCCAGGTGACGGGGCCATGGGCTATGGCTATGAGAACTCTGC
 GACCATCCCAGATGATGTCTGCGTTGTCCCTGAGAAATTTGAAGGAGACATCAAGCAGGAAGGGTTCGG
 TGCATTTGAGAGGGGCCGCCCTACCAGCGCCGGGTGCCCTGCAGCTGTGGCAATTTCTGGTGGCTTG
 CTGGATGACCCAAACAATGCCCATTTTATTGCCCTGGACGGGCCGGGAATGGAGTTCAAGCTCATTGAGC
 CTGAGGAGGTGCCAGGCTCTGGGGCATCCAGAAGAACCAGCCAGCCATGAATTACGACAAGCTGAGCCG
 CTGCTCCGATACTATTATGAGAAAGGCATCATGCAGAAGGTGGCTGGTGAAGCTTACGTGTACAAGTTT
 GTGTGTGAGCCCGAGCCCTCTTCTTTGGCCTTCCCGACAATCAGCGTCCAGCTCTCAAGGCTGAGT
 TTGACCGGCTGTGAGTGGAGGACACAGTCCCTTTGTCCTACTGGATGAGAGCCCCGCTACCTCCC
 AGAGCTGGCTGGCCCCGCCAGCCATTTGGCCCCAAGGGTGGCTACTCTTAC

ACGCGTACGCGGCCGCTCGAGCAGAACTCATCTCAGAAGAGGATCTGGCAGCAAATGATATCTGGATT
 ACAAGGATGACGACGATAAGGTTTAA

Protein Sequence:

>RC215093 representing NM_001986
 Red=Cloning site Green=Tags(s)

MERRMKAGYLDQQVPTFSSKSPGNGLREALIGPLGKLMDPGSLPPLDSEDLFQDL SHFQETWLAEAQV
 PDSDEQFVPDFHSENLAHFSPTRIKKEPQSPRTDPALSCSRKPPLPYHHGEQCLYSSAYDPPRQIAIKS
 PAPGALQSPQPFPRAEQRNFLRSSGTSQPHPGHYLGEHSSVFQQPLDICHSTFSQGGGREPLPAPYQ
 HQLSEPCPPYPQSFKQYHDPLYEQAGQPAVDQGGVNGHRYPGAGVVIKQEQTDFAYDSDVTGCASMYL
 HTEGFSGSPGDGAMGYEKPLRPFPDDVCVPEKFEQDIKQEGVGAFFREGPPYQRRGALQLWQFLVAL
 LDDPTNAHFIAWTGRGMEFKLIEPEEVARLWGIQKNRPAMNYDKLSRSLRYEYKIMQKVGERYVYK
 VCEPEALFSLAFPDNQRPAKAEFDRPVSEEDTVPLSHLDESPAYLPELAGPAQPFQPKGGYSY

TRTRPLEQKLISEEDLAANDILDYKDDDDKV

Chromatograms:

https://cdn.origene.com/chromatograms/mk6271_a10.zip

Restriction Sites:

Sgfl-MluI

Cloning Scheme:

ACCN: NM_001986

ORF Size: 1452 bp

OTI Disclaimer: Due to the inherent nature of this plasmid, standard methods to replicate additional amounts of DNA in E. coli are highly likely to result in mutations and/or rearrangements. Therefore, OriGene does not guarantee the capability to replicate this plasmid DNA. Additional amounts of DNA can be purchased from OriGene with batch-specific, full-sequence verification at a reduced cost. Please contact our customer care team at custsupport@origene.com or by calling 301.340.3188 option 3 for pricing and delivery.

The molecular sequence of this clone aligns with the gene accession number as a point of reference only. However, individual transcript sequences of the same gene can differ through naturally occurring variations (e.g. polymorphisms), each with its own valid existence. This clone is substantially in agreement with the reference, but a complete review of all prevailing variants is recommended prior to use. [More info](#)

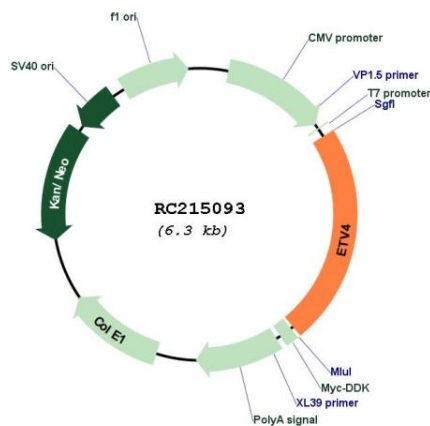
OTI Annotation: This clone was engineered to express the complete ORF with an expression tag. Expression varies depending on the nature of the gene.

Components: The ORF clone is ion-exchange column purified and shipped in a 2D barcoded Matrix tube containing 10ug of transfection-ready, dried plasmid DNA (reconstitute with 100 ul of water).

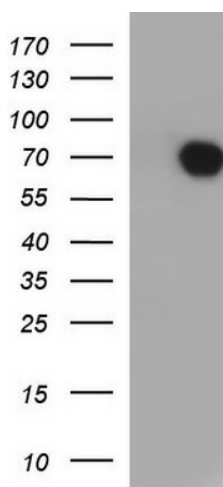
- Reconstitution Method:**
1. Centrifuge at 5,000xg for 5min.
 2. Carefully open the tube and add 100ul of sterile water to dissolve the DNA.
 3. Close the tube and incubate for 10 minutes at room temperature.
 4. Briefly vortex the tube and then do a quick spin (less than 5000xg) to concentrate the liquid at the bottom.
 5. Store the suspended plasmid at -20°C. The DNA is stable for at least one year from date of shipping when stored at -20°C.

Note:	Plasmids are not sterile. For experiments where strict sterility is required, filtration with 0.22um filter is required.
RefSeq:	NM_001986.4
RefSeq Size:	2212 bp
RefSeq ORF:	1455 bp
Locus ID:	2118
UniProt ID:	P43268
Cytogenetics:	17q21.31
Domains:	ETS, ETS_PEA3_N
Protein Families:	Druggable Genome, Transcription Factors
MW:	53.8 kDa
Gene Summary:	Transcriptional activator that binds to the enhancer of the adenovirus E1A gene; the core-binding sequence is 5'[AC]GGA[AT]GT-3'. [UniProtKB/Swiss-Prot Function]

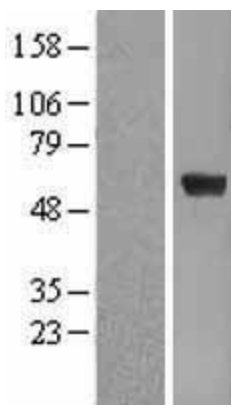
Product images:



Circular map for RC215093



HEK293T cells were transfected with the pCMV6-ENTRY control (Cat# [PS100001], Left lane) or pCMV6-ENTRY ETV4 (Cat# RC215093, Right lane) cDNA for 48 hrs and lysed. Equivalent amounts of cell lysates (5 ug per lane) were separated by SDS-PAGE and immunoblotted with anti-ETV4 (Cat# [TA590716]). Positive lysates [LY419608] (100ug) and [LC419608] (20ug) can be purchased separately from OriGene.



Western blot validation of overexpression lysate (Cat# [LY419608]) using anti-DDK antibody (Cat# [TA50011-100]). Left: Cell lysates from untransfected HEK293T cells; Right: Cell lysates from HEK293T cells transfected with RC215093 using transfection reagent MegaTran 2.0 (Cat# [TT210002]).