

## Product datasheet for RC215092

### ICAM4 (NM\_022377) Human Tagged ORF Clone

#### Product data:

Product Type: Expression Plasmids  
 Product Name: ICAM4 (NM\_022377) Human Tagged ORF Clone  
 Tag: Myc-DDK  
 Symbol: ICAM4  
 Synonyms: CD242; LW  
 Mammalian Cell Selection: Neomycin  
 Vector: pCMV6-Entry (PS100001)  
 E. coli Selection: Kanamycin (25 ug/mL)  
 ORF Nucleotide Sequence: >RC215092 representing NM\_022377  
 Red=Cloning site Blue=ORF Green=Tags(s)

TTTTGTAATACGACTCACTATAGGGCGGCCGGAATTCGTCGACTGGATCCGGTACCGAGGAGATCTGCC  
 GCCCGATCGCC

ATGGGGTCTCTGTTCCCTCTGTCGCTGCTGTTTTTTTTGGCGGCCGCTACCCGGGAGTTGGGAGCGCGC  
 TGGGACGCCGACTAAGCGGGCGCAAAGCCCCAAGGGTAGCCCTCTCGCGCCCTCCGGGACCTCAGTGCC  
 CTTCTGGGTGCGCATGAGCCCGGAGTTCGTGGCTGTGCAGCCGGGAAGTCAGTGCAGCTCAATTGCAGC  
 AACAGCTGTCCCCAGCCGAGAATTCAGCCTCCGCACCCCGCTCGGCAAGGCAAGACGCTCAGAGGGC  
 CGGTTGGGTGTCTTACCAGCTGCTCGAGTGAGGGCCTGGAGTCCCTCGCGCACTGCCTCGTGACCTG  
 CGCAGGAAAAACAGCTGGGCCACCTCCAGGATCACCGCCTACAACCGCCACAGCGTATTTGGAG  
 CCTCCGGTCTTAAAGGGCAGGAAATACACTTTGCGCTGCCACGTGACGCAGGTGTTCCCGGTGGGCTACT  
 TGGTGGTGACCCTGAGGCATGGAAGCCGGGTATCTATTCCGAAAGCCTGGAGCGCTTACCAGCCCTGGA  
 TCTGGCAACGTGACCTTACCTACGAGTTTGTGCTGGACCCCGCGACTTCTGGCAGCCCGTATCTGC  
 CACGCGCCCTCAATCTCGACGGCCTGGTGGTCCGCAACAGCTCGGCACCCATTACACTGATGCTCGGTG  
 AGCACCCTG

ACGCGTACGCGGCCGCTCGAGCAGAACTCATCTCAGAAGAGGATCTGGCAGCAAATGATATCTGGATT  
 ACAAGGATGACGACGATAAGGTTTAA



[View online »](#)

**Protein Sequence:** >RC215092 representing NM\_022377  
Red=Cloning site Green=Tags(s)

MGSLFPLSLLFFLAAAYPGVGSALGRRTKRAQSPKGSPLAPSGTSVPFWVRMSPEFVAVQPGKSVQLNCS  
 NSCPQPQNSSLRTPLRQGKTLRPGWVSYQLLDVRAWSSLAHCLVTCAGKTRWATSRITAYKPPHSVILE  
 PPVLKGRKYTLRCHVTQVFPVGYLVVTLRHGSRVIYSESLERFTGLDLANVTLTYEFAAGPRDFWQFPVIC  
 HARLNL DGLVVRNSSAPITLMLGEAPL

TRTRPLEQKLISEEDLAANDILDYKDDDDKV

**Chromatograms:** [https://cdn.origene.com/chromatograms/ja1489\\_b10.zip](https://cdn.origene.com/chromatograms/ja1489_b10.zip)

**Restriction Sites:** SgfI-MluI

**Cloning Scheme:**



**ACCN:** NM\_022377

**ORF Size:** 711 bp

**OTI Disclaimer:** The molecular sequence of this clone aligns with the gene accession number as a point of reference only. However, individual transcript sequences of the same gene can differ through naturally occurring variations (e.g. polymorphisms), each with its own valid existence. This clone is substantially in agreement with the reference, but a complete review of all prevailing variants is recommended prior to use. [More info](#)

**OTI Annotation:** This clone was engineered to express the complete ORF with an expression tag. Expression varies depending on the nature of the gene.

**Components:** The ORF clone is ion-exchange column purified and shipped in a 2D barcoded Matrix tube containing 10ug of transfection-ready, dried plasmid DNA (reconstitute with 100 ul of water).

**Reconstitution Method:**

1. Centrifuge at 5,000xg for 5min.
2. Carefully open the tube and add 100ul of sterile water to dissolve the DNA.
3. Close the tube and incubate for 10 minutes at room temperature.
4. Briefly vortex the tube and then do a quick spin (less than 5000xg) to concentrate the liquid at the bottom.
5. Store the suspended plasmid at -20°C. The DNA is stable for at least one year from date of shipping when stored at -20°C.

**RefSeq:** [NM\\_022377.3](#), [NP\\_071772.1](#)

**RefSeq Size:** 1390 bp

**RefSeq ORF:** 714 bp

**Locus ID:** 3386

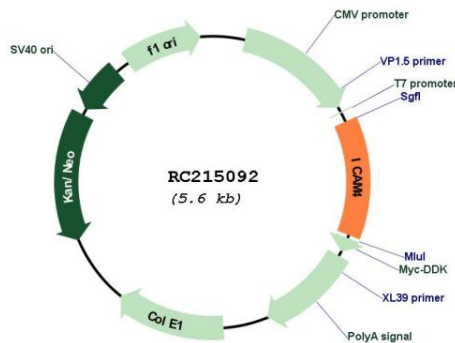
**Cytogenetics:** 19p13.2

**Protein Families:** Secreted Protein, Transmembrane

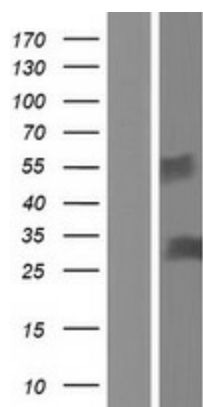
**MW:** 23.6 kDa

**Gene Summary:** This gene encodes the Landsteiner-Wiener (LW) blood group antigen(s) that belongs to the immunoglobulin (Ig) superfamily, and that shares similarity with the intercellular adhesion molecule (ICAM) protein family. This ICAM protein contains 2 Ig-like C2-type domains and binds to the leukocyte adhesion LFA-1 protein. The molecular basis of the LW(A)/LW(B) blood group antigens is a single aa variation at position 100; Gln-100=LW(A) and Arg-100=LW(B). Alternative splicing results in multiple transcript variants encoding distinct isoforms. [provided by RefSeq, Jul 2008]

**Product images:**



Circular map for RC215092



Western blot validation of overexpression lysate (Cat# [LY411697]) using anti-DDK antibody (Cat# [TA50011-100]). Left: Cell lysates from untransfected HEK293T cells; Right: Cell lysates from HEK293T cells transfected with RC215092 using transfection reagent MegaTran 2.0 (Cat# [TT210002]).