

Product datasheet for RC215089

ENAM (NM_031889) Human Tagged ORF Clone

Product data:

Product Type:	Expression Plasmids
Product Name:	ENAM (NM_031889) Human Tagged ORF Clone
Tag:	Myc-DDK
Symbol:	ENAM
Synonyms:	ADAI; AI1C; AIH2
Mammalian Cell Selection:	Neomycin
Vector:	pCMV6-Entry (PS100001)
E. coli Selection:	Kanamycin (25 ug/mL)
ORF Nucleotide Sequence:	>RC215089 representing NM_031889 Red=Cloning site Blue=ORF Green=Tags(s)

TTTTGTAATACGACTCACTATAGGGCGGCCGGAATTCGTCGACTGGATCCGGTACCGAGGAGATCTGCC
GCCCGGATCGCC

ATGTTGGTGCTTCGGTGCAGGCTTGAACCTCTTTTCTAACTAGATAACTTGGTACCAAAAGGCAAAA
TGAAGATTCTCTGGTCTTTCTAGGGCTTCTGGTAATTCTGTTGCTATGCCAATGCACATGCCCGAAT
GCCTGGATTTAGCAGTAAAAGTGAGGAGATGATGCGGTATAATCAATTCAACTTTATGAACGGCCACAT
ATGGCACACCTGGGGCCCTTCTTGAACCGGTCTCCCTCAGCAATTTCCACAGTACCAGATGCCCATGT
GGCCTCAGCCACCACCAACACATGGCATCCACGGAAATCCTCAGCACCCAAACGTCATAACAAGACTGA
TCAGACCCAAGAAACCCAGAAACCAACAGACTCAGTCAAAAAAGCCACCACAAAAGCGGCCTTTGAAG
CAGCCATCACATAATCAACCTCAGCCCGAAGAGGAAGCTCAACCCCTCAGGCATTTCCACCATTGGAA
ATGGGCTATTCCTATCAACAACCACCATGGCAAATCCACAGAGGTTACCACCACCAGGTTATGGACG
CCCACCAATCAGCAATGAAGAAGGGGGGAATCCTTACTTTGGATATTTGGATATCATGGCTTTGGGGGT
CGCCCTCCTTATTATTCAGAAGAAATGTTTGAACAAGATTTTGA AAAACCCAAAGAAGAAGATCCTCCTA
AAGCAGAAAGTCCAGGCACAGAACCACAGCTAATTCAACAGTCACTGAGACGAATTCTACCAACCAAAA
TCCTAAAGGGAGTCAGGGAGGAAATGACACCAGCCCCACAGGAAACAGTACCCAGGACTAAACACTGGG
AACAAACCTCCAGCTCAAAATGGGATTGGCCACTCCCTGCAGTCAACGTTCCAGCCAGGGAGGGCCAG
GAAGTCAAATCCCATGGAGACCAAGTCAGCCAAATATTCTGTGAAAATCATCCATATCCTAATAAAGAAA
TTTTCTTCAGGAAGACAGTGGTATTTCTACTGGTACTGTGATGGGGCACAGACAGAATAGGCCTTTTAC
AGAAATCAACAAGTTCAAAGGGTCTCGGTGGAACCTCTTTGCTTGGAAACGTAACAAGTAGCTCGTC
CAGGAAATCCAGTTTATCACAAGCTTACCCTCTACTTCAAGAGGCAATTATCCCAATTATGCAGGAAA
TCCAGCAAATCTCAGAAGAAAGCCTCAGGGCCAAATAAACACCTGTAGGAACTACTGTTGCCCACTG
GGTCCCAAACCTGGCCCTGTTGTTGCGAATGAAAAATCCAAAATCCAAAGGAGAAGCCCTGGGTCCAA
AAGAACAATAATAGTTCTACAAGAATCCAACCAGCCCTGGAGAACTCTCAACAGTATGAAGTTAA
TAAATCAAATTAAACTGCCTCACTCTGAGGGTTATATGCCAGTCCCAAATTTAATTCTGTTGATCAA



[View online »](#)

CATGAAAACCTCTATTACCCAAGAGGAGATTCCAGAAAAGTCCCAAATCTGATGGACAAACCCAAAGCC
AGAATTTGCCAAAGGGATTGTTTTAGGGTCAAGAAGGATGCCATATGAATCAGAACTAATCAGTCAGA
ATTAAGCACAGCTCATATCAGCCTGCTGTATACCCTGAGGAAATCCCTTCTCCTGCAAAAAGAACATTTT
CCTGCTGGAAGAAATACTTGGGACCACCAAGAAATCTCTCCACCTTTAAGGAAGATCCAGGGAGGCAAG
AAGAACATTTACCCATCCTTCCCATGGTCTAGAGGAAGTGTCTTACCCTGAATATAACCCATATGA
TCCCAGGAAAACTCACCATACCTTAGAGGCAATACATGGGATGAGAGAGATGATTCCCAATACTATG
GGCAAAAAGAAAGTCCACTTACCCATAAATACCCAGACCAGAAGGAGATAGTCCCTTATAATGAAG
AGGACCCAGTTGATCCAAGTGGAGATGAAGTCTTTCCTGGACAAAATAGATGGGGTGAAGAGTTGAGCTT
CAAAGGAGGCCAACAGTTAGGCACTATGAAGGTGAACAATATACCTCAAATCAGCCAAAGGAATATCTT
CCCTATTCTTTAGATAATCCATCAAACCAAGGGAGGATTTTTATTACAGTGAATTTTACCATGGAGCC
CGGATGAGAATTTTCCATCATATAATACAGCTTCTACTATGCCACCACCTATAGAGAGCAGGGGCTACTA
CGTTAATAATGCCGCTGGACCAGAAGAAAGCACTCTATTTCCCTTACGGAATTCCTGGGACCACAGGATA
CAAGCCCAAGGGCAGAGAGAAAGAAGGCCGATTTTTAACAGAAATATCTGGGATCAGGCAACACATTTAC
AAAAGCCCCAGCTAGGCCACCAGACCAGAAAGGTAACCGCCCTATTACAGTAACCCCCAGCTGGGCT
TCAGAAAATCCAATATGGCATGAAGGTGAGAATTTGAACTATGGCATGCAAATAACTAGGATGAATTCT
CCAGAGAGAGAATTCATCTTTCCCTAACTTCATCCCACCAAGTTACCCATCAGGTCAAAAAGAAGCAC
ATTTATTTACCTAAGCCAGAGAGGCTCTTGCTGTGCTGGTAGCTCCACAGGGCCCAAGGACAATCCACT
AGCTCTACAAGACTACACTCCATCCTATGGTCTTGACCTGGGGAGAACCAAGACACCAGTCCCTCTGTAT
ACAGACGGTAGTCATACCAAGCAGACAAGAGATATCATCTCCCAACAAGCATCTACCAGGCCAAAGAA
ACAGCTCAGAGAAGAGGGAAAGCCAAAACCTTTTAGAGATGATGTGCCACGCTGAGGAGGAACACACC
ATGTTCTATAAAGAATCAACTGGGCCAAAAGGAAATTATGCCCTTTCCTGAAGCCAGTCCCTTCAATCA
AGAATACACCTTGTCTCAAAAATGATCTTGGAGGAGATGGGAACAACATTCTGGAACAAGTTTTGAAG
ACAACCAGCTCAATGAAAGAAGTGTGACCTTACTCCTGAGCAGCTTGTTATTGGTACACCTGATGAAGG
CTCCAATCCAGAAGGCATCCAAAGTCAAGTCCAAGAAAATGAGAGTGAGAGGCAACAGCAAAGACCATCT
AACATTCTGCATTTGCCATGCTTTGGCTCCAAATTAGCAAAGCATCACTTCCACCACCGAACTCCAT
CTAGCGATGGAAGGCAAAGCCCATTGATGGGGATTCAATTACGCCTACTGAAAATCCTAACACATTGGT
TGAGTTAGCTACTGAGGAACAATTTAAGAGTATAAATGTAGACCCACTTGATGCAGATGAACACAGTCCA
TTTGAATTCCTTCAAAGAGGGACCAATGTACAGGACCAGGTACAAGACTGCTTACTTTCAGGCC

ACGCGTACGCGGCCGCTCGAGCAGAACTCATCTCAGAAGAGGATCTGGCAGCAATGATATCCTGGATT
ACAAGGATGACGACGATAAGGTTTAA

Protein Sequence: >RC215089 representing NM_031889
Red=Cloning site Green=Tags(s)

```

MLVLRCLRGLTSFPKLDNLVPGKMKILLVFLGLLGNVAMPMHMPMPGFSSKSEEMRYNQFNMNGPH
MAHLGPFPGNGLPQQFPQYQMPMWPQPPNPTWHPKSSAPKRHNKTDQTQETQKPNQTSKPPQKRPLK
QPSHNQPQPEEEAQPPQAFPPFGNGLFPYQPPWQIPQRLPPPGYGRPPISNEEGNPYFGYFYGHGFGG
RPPYYSEEMFEQDFEKPKEEDPPKAESPTEPTANSTVTEINSTQPNPKGSQGGNDTSPGNSTPGLNTG
NNPPAQNGIGPLPAVNASGQGGGSGQIPWRPSQPNIRENHPYPNIRNFPSSGRQWYFTGTVMGHRQNRPFY
RNQQVQRGPRWNFFAWERKQVARPGNPVYHKAYPPTSRGNYPNYAGNPANLRRKPQGNKHPVGTTVAPL
GPKGPGVVRNEKIQNPKKPLGPKQIIVPTKNPTSPWRNSQQYEVNKSNYKLPHSEGYMPVPNFNSVDQ
HENSYYPRGDSRKVPNSDQTSQNLPGKIVLGSRRMPYESETNQSELKHSSYQPAVYPEEIPSPAKEHF
PAGRNTWDHQEISPPFKEDPGRQEEHLPHPSHSGRGSVFYPEYNPYDPRENSPYLRGNTWDERDDSPNTM
GQKESPLYPIINTPDQKEIVPYNEEDPVDPDTGDEVFPGQNRWGEELSFKGGPTVRHYEGEQYTSNQPKYL
PYSLDNPSPKREDFYSEFYWPSPDENFSPYNTASTMPPPIESRGYYVNAAGPEESTLFPSSRNSWDHRI
QAQQRERRRPFYFNRIWDQATHLQKAPARPPDQKGNQPYYSNTPAGLQKNPIWHEGENLNYGMQITRMS
PEREHSSFPNFIPPSYPSGQKEAHLFHLSQLRGSCCAGSSTGPKDNPLALQDYTPSYGLAPGENQDTSPLY
TDGSHTKQTRDII SPTSILPGQRNSSEKRESQNPFRDDVSTLRRNTPCSIKNQLGQKEIMPFPEASSLQS
KNTPLCLNDLGGDGNILEQVFEDNQLNERTVDLTPEQLVIGTPDEGSNPEGIQSQVQENESERQQQRPS
NILHLPCFGSKLAKHHSSTTGTSPSSDGRQSPFDGDSITPTENPNTLVELATEEQFKSINVDPDLDADEHSP
FEFLQRGTNVQDQVQDCLLLQA
    
```

TRTRPLEQKLISEEDLAANDILDYKDDDDKV

Chromatograms: https://cdn.origene.com/chromatograms/mk8011_c01.zip

Restriction Sites: SgfI-MluI

Cloning Scheme:

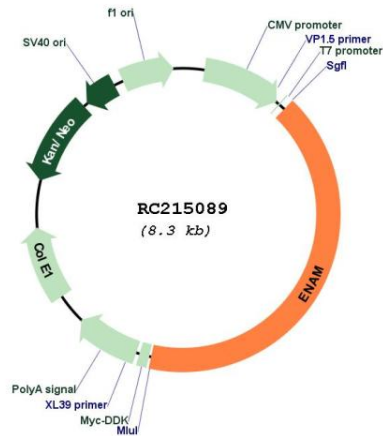


ACCN: NM_031889

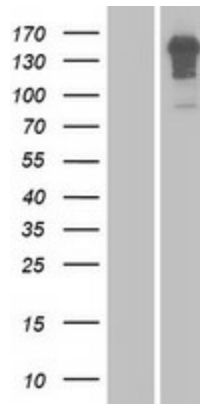
ORF Size: 3426 bp

OTI Disclaimer:	The molecular sequence of this clone aligns with the gene accession number as a point of reference only. However, individual transcript sequences of the same gene can differ through naturally occurring variations (e.g. polymorphisms), each with its own valid existence. This clone is substantially in agreement with the reference, but a complete review of all prevailing variants is recommended prior to use. More info
OTI Annotation:	This clone was engineered to express the complete ORF with an expression tag. Expression varies depending on the nature of the gene.
Components:	The ORF clone is ion-exchange column purified and shipped in a 2D barcoded Matrix tube containing 10ug of transfection-ready, dried plasmid DNA (reconstitute with 100 ul of water).
Reconstitution Method:	<ol style="list-style-type: none">1. Centrifuge at 5,000xg for 5min.2. Carefully open the tube and add 100ul of sterile water to dissolve the DNA.3. Close the tube and incubate for 10 minutes at room temperature.4. Briefly vortex the tube and then do a quick spin (less than 5000xg) to concentrate the liquid at the bottom.5. Store the suspended plasmid at -20°C. The DNA is stable for at least one year from date of shipping when stored at -20°C.
RefSeq:	NM_031889.3
RefSeq Size:	5674 bp
RefSeq ORF:	3429 bp
Locus ID:	10117
UniProt ID:	Q9NRM1
Cytogenetics:	4q13.3
Protein Families:	Secreted Protein
MW:	128.8 kDa
Gene Summary:	Dental enamel forms the outer cap of teeth and is the hardest substance found in vertebrates. This gene encodes the largest protein in the enamel matrix of developing teeth. The protein is involved in the mineralization and structural organization of enamel. Defects in this gene result in amelogenesis imperfect type 1C.[provided by RefSeq, Oct 2009]

Product images:



Circular map for RC215089



Western blot validation of overexpression lysate (Cat# [LY410457]) using anti-DDK antibody (Cat# [TA50011-100]). Left: Cell lysates from untransfected HEK293T cells; Right: Cell lysates from HEK293T cells transfected with RC215089 using transfection reagent MegaTran 2.0 (Cat# [TT210002]).