

Product datasheet for **RC215084**

ODF3L2 (NM_182577) Human Tagged ORF Clone

Product data:

Product Type:	Expression Plasmids
Product Name:	ODF3L2 (NM_182577) Human Tagged ORF Clone
Tag:	Myc-DDK
Symbol:	ODF3L2
Synonyms:	C19orf19
Mammalian Cell Selection:	Neomycin
Vector:	pCMV6-Entry (PS100001)
E. coli Selection:	Kanamycin (25 ug/mL)
ORF Nucleotide Sequence:	>RC215084 ORF sequence Red=Cloning site Blue=ORF Green=Tags(s)

TTTTGTAATACGACTCACTATAGGGCGGCCGGAATTCGTCGACTGGATCCGGTACCGAGGAGATCTGCC
GCC**CGGATCGCC**

ATGGGGACCCCTCAGCTGCGACTCCACCCACGGCTGGCCACAGCCCCCTTGGCCGGCGAGTGACGGAGG
GCCAGATCCGGAGACCGCCTGAGGAAGTCTGTGGGACGGCCACCCTGGAGAACGGCTCGGGGCCAGG
CTTGTATGTCCTGCCGTCCACCGTGGGCTTCATCAACCACGACTGCACCAGGGTGGCCAGTCCCGCCTAC
TCGCTCGTCCGGAGGCCAGTGAGGCACCACCTCAGGACACCAGCCGGGCCCATCTACTTCTTGACC
CCAAAGTCACACGCTTTGGCCGAGCTGCACCCCTGCCTACTCCATGCAGGGCCGGCCAAAGTCTCGGGG
TCCGGAGGTGACGCCAGGCCCTGGGGCCTACAGCCCAGAGAAGGTGCCCCCTGCGCGCCATCGGACACCG
CCGGCTTTCACCCTGGGCTGCCGCTCCCCCTGAAGCCCCTGGACACCTCAGCCCCTGCCCTAATGCCT
ACACCATGCCCCCTCTGTGGGGCTCACAGATCTTACCAAGCCCAGCAGCCCAGCTACACGGTGGTGGG
CCGCACCCCCCGCCGCCCGCCCGCAGGATCCTGCTGAGATACCAGGCCGGGCCAGTACGACAGCCCCG
GACGAAACACCTACCGCCAGCGCTGCCTGCCTTACCATGCTGGGGCGGCCCGGGCCCGCGACCCC
TGGAGGAGACCCCGCCCTGGCGCCACTGCCAGAGCAGGTACCCTGAACAAAGCCAGGGCTCCAGC
GTTCTCTATGGGCATCCGCCACTCGAAACGGGCCAGCACCATGGCCGCCACCACGCCCTCCCGCCCTGCG
GGGCACAGGCTGCCCGGCCGCTGCTGC

ACGCGTACGCGGCCGCTCGAGCAGAAACTCATCTCAGAAGAGGATCTGGCAGCAAATGATATCCTGGATT
ACAAGGATGACGACGATAAGGTTTAA



[View online »](#)

Protein Sequence: >RC215084 protein sequence
Red=Cloning site Green=Tags(s)

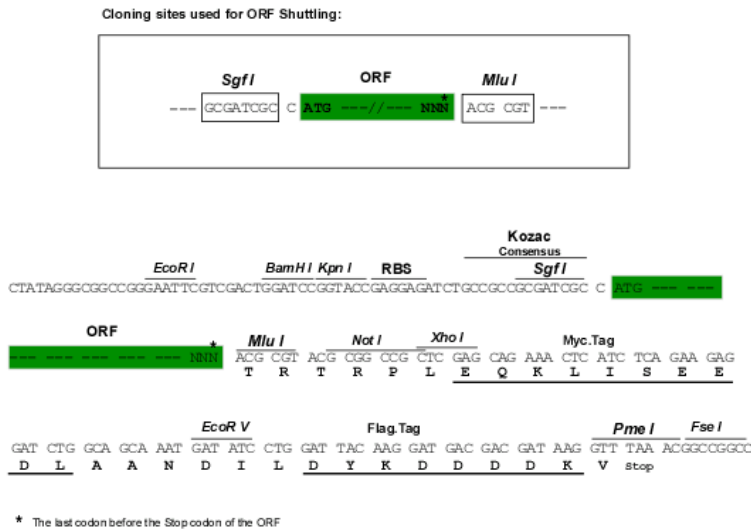
MGTLSCDSTPRLATAPLGRRVTEGQIPETGLRKSCGTATLENGSGPGLYVLPSTVGFINHDCTRVASPAY
 SLVRRPSEAPPQDTSPGPIYFLDPKVTRFGRSCTPAYSMQGRAKSRGPEVTPGPGAYSPEKVPPARHRT
 PAFTLGCRLPLKPLDTSAPAPNAYTMPPLWGSQIFTKPSSPSYTVVGRTPPARPPQDPAEIPGPGQYDSP
 DANTYRQRLPAFTMLGRPRAPRPLEETPGPGAHCPEQVTNKKARAPAFSMGIRHRSKRASTMAATTPSRPA
 GHRLPGGCC

TRTRPLEQKLISEEDLAANDILDYKDDDDKV

Chromatograms: https://cdn.origene.com/chromatograms/mk6446_c06.zip

Restriction Sites: SgfI-MluI

Cloning Scheme:



ACCN: NM_182577

ORF Size: 867 bp

OTI Disclaimer: The molecular sequence of this clone aligns with the gene accession number as a point of reference only. However, individual transcript sequences of the same gene can differ through naturally occurring variations (e.g. polymorphisms), each with its own valid existence. This clone is substantially in agreement with the reference, but a complete review of all prevailing variants is recommended prior to use. [More info](#)

OTI Annotation: This clone was engineered to express the complete ORF with an expression tag. Expression varies depending on the nature of the gene.

Components: The ORF clone is ion-exchange column purified and shipped in a 2D barcoded Matrix tube containing 10ug of transfection-ready, dried plasmid DNA (reconstitute with 100 ul of water).

Reconstitution Method:

1. Centrifuge at 5,000xg for 5min.
2. Carefully open the tube and add 100ul of sterile water to dissolve the DNA.
3. Close the tube and incubate for 10 minutes at room temperature.
4. Briefly vortex the tube and then do a quick spin (less than 5000xg) to concentrate the liquid at the bottom.
5. Store the suspended plasmid at -20°C. The DNA is stable for at least one year from date of shipping when stored at -20°C.

RefSeq: [NM_182577.2](#), [NP_872383.1](#)

RefSeq Size: 1607 bp

RefSeq ORF: 870 bp

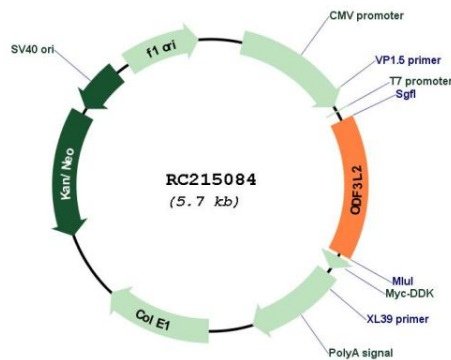
Locus ID: 284451

UniProt ID: [Q3SX64](#)

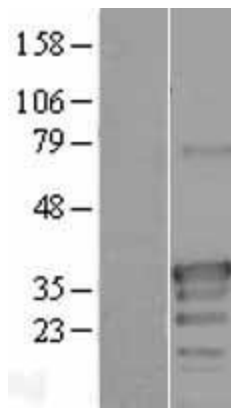
Cytogenetics: 19p13.3

MW: 30.8 kDa

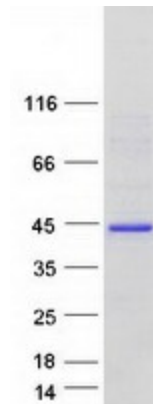
Product images:



Circular map for RC215084



Western blot validation of overexpression lysate (Cat# [LY405466]) using anti-DDK antibody (Cat# [TA50011-100]). Left: Cell lysates from untransfected HEK293T cells; Right: Cell lysates from HEK293T cells transfected with RC215084 using transfection reagent MegaTran 2.0 (Cat# [TT210002]).



Coomassie blue staining of purified ODF3L2 protein (Cat# [TP315084]). The protein was produced from HEK293T cells transfected with ODF3L2 cDNA clone (Cat# RC215084) using MegaTran 2.0 (Cat# [TT210002]).