

Product datasheet for RC215074

Amylin (IAPP) (NM_000415) Human Tagged ORF Clone

Product data:

Product Type: Expression Plasmids
Product Name: Amylin (IAPP) (NM_000415) Human Tagged ORF Clone
Tag: Myc-DDK
Symbol: IAPP
Synonyms: DAP; IAP
Vector: pCMV6-Entry (PS100001)
E. coli Selection: Kanamycin (25 ug/mL)
Cell Selection: Neomycin
ORF Nucleotide Sequence: >RC215074 representing NM_000415
Red=Cloning site Blue=ORF Green=Tags(s)

TTTTGTAATACGACTCACTATAGGGCGCCGGAATTCGTCGACTGGATCCGGTACCGAGGAGATCTGCC
GCC**CGGATCGCC**

ATGGGCATCTGAAGCTGCAAGTATTTCTATTGTGCTCTCTGTTGCATTGAACCATCTGAAAGCTACAC
CCATTGAAAGTCATCAGGTGAAAAGCGGAAATGCAACACTGCCACATGTGCAACGCAGCGCTGGCAA
TTTTTTAGTTCATTCCAGCAACAACTTTGGTGCCATTCTCTCATCTACCAACGTGGGATCCAATACAT
GGCAAGAGGAATGCAGTAGAGGTTTTAAAGAGAGAGCCACTGAATTACTTGCCCTT

ACGCGTACGCGGCCGCTCGAGCAGAAACTCATCTCAGAAGAGGATCTGGCAGCAAATGATATCCTGGATT
ACAAGGATGACGACGATAAGGTTTAA

Protein Sequence: >RC215074 representing NM_000415
Red=Cloning site Green=Tags(s)

MGILKLQVFLIVLSVALNHLKATPIESHQVEKRKCNATCATQRLANFLVHSSNFGAILSSTNVGSNTY
GKRNAVEVLKREPLNYLPL

TRTRPLEQKLISEEDLAANDILDYKDDDDKV

Chromatograms: https://cdn.origene.com/chromatograms/mk6115_b04.zip

Restriction Sites: Sgfl-Mlul



[View online »](#)

OTI Disclaimer: Due to the inherent nature of this plasmid, standard methods to replicate additional amounts of DNA in E. coli are highly likely to result in mutations and/or rearrangements. Therefore, OriGene does not guarantee the capability to replicate this plasmid DNA. Additional amounts of DNA can be purchased from OriGene with batch-specific, full-sequence verification at a reduced cost. Please contact our customer care team at custsupport@origene.com or by calling 301.340.3188 option 3 for pricing and delivery.

The molecular sequence of this clone aligns with the gene accession number as a point of reference only. However, individual transcript sequences of the same gene can differ through naturally occurring variations (e.g. polymorphisms), each with its own valid existence. This clone is substantially in agreement with the reference, but a complete review of all prevailing variants is recommended prior to use. [More info](#)

OTI Annotation: This clone was engineered to express the complete ORF with an expression tag. Expression varies depending on the nature of the gene.

RefSeq: [NM_000415.1](#), [NM_000415.2](#), [NM_000415.3](#), [NP_000406.1](#)

RefSeq Size: 1462 bp

RefSeq ORF: 270 bp

Locus ID: 3375

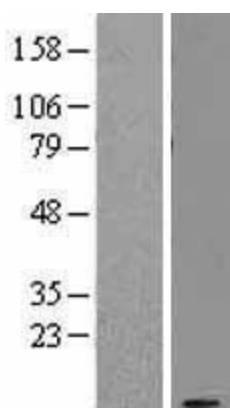
Protein Families: Druggable Genome, Secreted Protein

Protein Pathways: Maturity onset diabetes of the young

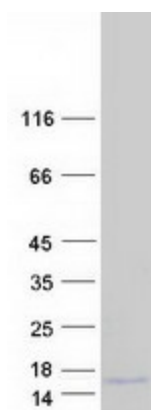
MW: 9.81 kDa

Gene Summary: This gene encodes a member of the calcitonin family of peptide hormones. This hormone is released from pancreatic beta cells following food intake to regulate blood glucose levels and act as a satiation signal. Human patients with type 1 and advanced type 2 diabetes exhibit reduced levels of the encoded hormone in blood and pancreas. This protein also exhibits a bactericidal, antimicrobial activity. [provided by RefSeq, Jul 2016]

Product images:



Western blot validation of overexpression lysate (Cat# [LY400146]) using anti-DDK antibody (Cat# [TA50011-100]). Left: Cell lysates from untransfected HEK293T cells; Right: Cell lysates from HEK293T cells transfected with RC215074 using transfection reagent MegaTran 2.0 (Cat# [TT210002]).



Coomassie blue staining of purified IAPP protein (Cat# [TP315074]). The protein was produced from HEK293T cells transfected with IAPP cDNA clone (Cat# RC215074) using MegaTran 2.0 (Cat# [TT210002]).