

Product datasheet for RC215062

Atrophin 1 (ATN1) (NM_001007026) Human Tagged ORF Clone

Product data:

Product Type:	Expression Plasmids
Product Name:	Atrophin 1 (ATN1) (NM_001007026) Human Tagged ORF Clone
Tag:	Myc-DDK
Symbol:	Atrophin 1
Synonyms:	B37; CHEDDA; D12S755E; DRPLA; HRS; NOD
Mammalian Cell Selection:	Neomycin
Vector:	pCMV6-Entry (PS100001)
E. coli Selection:	Kanamycin (25 ug/mL)
ORF Nucleotide Sequence:	>RC215062 ORF sequence Red=Cloning site Blue=ORF Green=Tags(s)

TTTTGTAATACGACTCACTATAGGGCGGCCGGAATTCGTCGACTGGATCCGGTACCGAGGAGATCTGCC
GCCCGCATCGCC

ATGAAGACACGACAGAATAAAGACTCGATGTCAATGAGGAGTGGACGGAAGAAAGAGGCCCTGGGCCCC
GGGAAGAAGTGAATCGAGGGGCGGGCCCTCCCCTGGAGGGGTGACGACGTCCAGCAGTATGGCAAAGC
TGAGAAGTCCAGGCAGACAGCCAAGAAGGCCGAGTAGAGGAAGCCTCCACCCAAAGGTCAACAAGCAG
GGTCGGAGTGGAGAGATCTCAGAGAGTAAAGTGAAGGAGACCAATGCACCAAAAAAGACCAAACTGAGC
AGGAACCTCCCTCGGCCACAGTCTCCCTCCGATCTGGATAGCTTGGACGGGCGGAGCCTTAATGATGATGG
CAGCAGCGACCCTAGGGATATCGACCAGGACAACCGAAGCACGTCCCCCAAGTATCTACAGCCCTGGAAGT
GTGGAGAATGACTCTGACTCATCTTCTGGCCTGTCCCAGGGCCAGCCCGCCCTACCACCCACCTCCAC
TCTTCTCCTTCCCCTCAACCGCCAGACAGCACCCCTCGACAGCCAGAGGCTAGCTTTGAACCCATCC
TTCTGTGACACCCACTGGATATCATGCTCCATGGAGCCCCACATCTCGAATGTTCCAGGCTCCTCCT
GGGGCCCTCCCCTCACCCACAGCTCTATCCTGGGGGCACTGGTGGAGTTTGTCTGGACCCCAATGG
GTCCCAAGGGGGAGGGGCTGCCTCATCAGTGGGGGCCCTAATGGGGTAAGCAGCACCCCAACCCAC
TACTCCATTTTCAGTATCAAGCTCTGGGCTAGTGGTGTCCCCAACAAAGCCGCTACCACTCCAGTG
GGTGGTGGGAACCTACCTTCTGCTCCACCACGCAACTTCCCCATGTGACACCGAACCTGCCCTCCC
CACCTGCCCTGAGACCCCTCAACAATGCATCAGCCTCTCCCCCTGGGCGCCCAACCACTACTCTGG
TCATCTGCCCTCTCCCCAGCCATGGGACAGGGTATGGGTGGACTTCTCCTGGCCAGAGAAGGGCCCA
ACTCTGGCTCCTCACCCACTCTCTGCCTCCTGCTTCTTCTTCTGCTCCAGCGCCCCCATGAGGTTTC
CTTATTATCCTTAGTAGTCTGTCAGCAGCCTCCTTCCAGTTCTTCTCCTCTTCTCTGCTC
CCCCTTCCAGCTTCCAGGCATTGCCAGCTACCCCACTCTTCCCTCCCCAACAAAGCCTCTCTGTC
TCCAATCAGCCCCCAAGTATACTCAGCCTTCTCCATCCCAGGCTGTGTGGAGCCAGGGTCCCCCAC
CACCTCCTCCTATGGCCGCTCTTAGCCAACAGCAATGCCATCCAGGCCCTTCCCTCCTCTACTGG
GGCCAGTCCACCGCCACCCACAGTCTCAACACATCACCATCACCACCAGCAACGCAACAGCAGCAG



[View online »](#)

CAGCAGCAGCAGCAGCAGCAGCAGCAGCAGCAGCAGCAGCAGCAGCATCACGGAACTCTGGGCCCTCCTCCTG
 GAGCATTTCCACCACCTGGAGGGCGGTAGCTCCACCACGCACACCCTTACGCCATGTCTCCCTCCCT
 GGGGTCTCTGAGGCCCTACCCACAGGGCCAGCACACCTGCCCCACCTCACAGCCAGGTGTCTACAGC
 CAAGCAGGCCCAATGGCCCTCCAGTCTTCTTCCAACCTTCTCTTCCACTTCTCAAGGGTCTCT
 ACCCATGTTACACCCCTCCCTTCCCAGGGCCCTCAAGGGGCGCCCTACCCTTTCCACCAGGTGCCTAC
 GGTACCACCTCTTCGGTACCCTTTCCACGGTCATTGCCACCGTGGCTTCTCGCCAGCAGGCTACAAA
 ACGGCCCTCCACCTGGGCCCCACCGTACGGAAAGAGAGCCCGTCCCGGGGGCTACAAGACAGCCA
 CCCCACCCGGATACAAACCCGGTTCGCCTCCCTCCTTCGGAACGGGGACCCACCCGGGTATCGAGGAAC
 CTCGCCACCTGCAGGCCAGGGACCTTCAAGCCGGGCTCGCCACCCTGGGACCTGGGCCCTGCCACCT
 GCGGGGCCCTCAGGCCTGCCATCGCTGCCACCACCTGCGGCCCTGCCTCAGGGCCGCCCTGAGCG
 CCACGCAGATCAAACAGGAGCCGGCTGAGGAGTATGAGACCCCGAGAGCCCGGTGCCCCAGCCCGCAG
 CCCCTCGCCCCCTCCAAGTGGTAGATGTACCCAGCCATGCCAGTCAGTCTGCCAGTTCAACAAACAC
 CTGGATCGCGGTTCAACTCGTGC GCGCAGCAGCCTGTACTTCGTGCCACTGGAGGGTCCAAGCTGG
 CCAAGAAGCGGGCGACCTGGTGGAGAAGGTGCGGCGGAGGCCGAGCAGCGAGCGCGGAAGAAAAGGA
 GCGCGAGCGGAGCGGAACGCGAGAAAGAGCGGAGCGGAGGAGCGGAGCTTGAACGCAGCGTG
 AAGTTGGCTCAGGAGGGCGTCTCCGGTGAATGCCATCTCTGGGCCAGTGCCTCCATCGCCCTCCAT
 TTGAACGGGCGAGTGGGTGGCTACAGTGCCCCCTACCTGGGTCTGACTCCAGCCTTGCGCACTCT
 CAGTGAATATGCCCGGCCTCATGTATGTCTCCTGGCAATCGCAACCATCCATTCTACGTGCCCTGGGG
 GCAGTGGACCCGGGGCTCCTGGGTTACAATGTCCCGGCCCTGTACAGCAGTGATCCAGCTGCCCGGGA
 GGAACGGGAAGCCCGTGAACGAGACCTCCGTGACCGCCTCAAGCCTGGCTTTGAGGTGAAGCCTAGTGA
 GCTGGAACCCCTACATGGGGTCCCTGGGCCGGGTTGGATCCCTTTCCCGACATGGGGCCCTGGCTCTG
 CAGCCTGGCCCACCTGGCCTGCACCCTTCCCCCTTTCATCCGAGCCTGGGGCCCTGGAGCGAGAACGTC
 TAGCGCTGGCAGCTGGCCAGCCCTGCGGCCGTGACATGTCTATGCTGAGCGGCTGGCAGCTGAGAGGCA
 GCACGCAGAAAGGTGGCGGCCCTGGGCAATGACCCACTGGCCCGGCTGCAGATGCTCAATGTGACTCCC
 CATCACCACCAGCACTCCACATCCACTCGCACCTGCACCTGCACCAGCAAGATGCTATCCATGCAGCCT
 CTGCCTCGGTGCACCCTCTCATTGACCCCTGGCCTCAGGGTCTCACCTTACCCGGATCCCTACCCAGC
 TGGAACTCTCCCTAACCCCTGCTTCTCACCCCTGCACGAGAACGAAGTTCTTCGTCACCAGCTCTTT
 GCTGCCCTTACCCGGACCTGCCGGCTCCCTTCTGCCCGATGTACAGCAGCTCATCAGCTGCAGGCCA
 TGCACGCACAGTCAGCTGAGCTGCAGCGCTTGGCGCTGGAACAGCAGCAGTGGTGCATGCCATCACC
 GCTGCACAGTGTCCGCTGCCTGCCAGGAGGACTACTACAGTCACCTGAAGAAGGAAAGCGACAAGCCA
 CTG

 ACGCGTACGCGGGCCGCTCGAGCAGAAACTCATCTCAGAAGAGGATCTGGCAGCAAATGATATCCTGGATT
 ACAAGGATGACGACGATAAGGTTTAA

Protein Sequence: >RC215062 protein sequence
 Red=Cloning site Green=Tags(s)

```

MKTRQNKDSMSMRSGRKKKEAPGREELRSRGRASPGGVSTSSSDGKAESRQTAKKARVEEASTPKVNKQ
GRSEIISESESEETNAPKKTKEQELPRPQSPSDLDSLGRSLNDDGSSDPRDIDQDNRSTSPSIYSPGS
VENDSDSSSGLSQGPARYHPPPLFPPSPQPPDSTPRQPEASFEPHPSVPTPTGYHAPMEPPTSRMFQAPP
GAPPPHPQLYPGGTGGVLSGPPMGPKGGGAASSVGGPNGGKQHPPTTPI SVSSSGASGAPTKPPTTPV
GGNLPASAPPANFPHVTPNLPPPPALRPLNNASAPPLGAQPLPGHLPSPHAMGQGMGLPPGPEKGP
TLAPSPHSLPPASSAPAPPMRFYSSSSSSAAASSSSSSSSASFPASQALPSYPHFPPTLSL SV
SNQPPKYTQPSLPSQAVWSQGPPPPPYGRLLANSNAHPGFPPTGAQSTAHPVSTHHHHHQQQQQQ
QQQQQQQQQQQHNGSGPPPPGAFPHLEGGSSHHAHPYAMPSLGSRLRYPGPAHLPPHSQVSY
QAGPNGPPVSSSSNSSSSTSQGSYPCSHSPSQGPQAGPYFPVPTVTSSATLSTVIATVASSPAGYK
TASPPGPPPYGKRAPSPGAYKTATPPGYKPGSPSFRTGTPPGYRGTSPAGPFTFKPGSPTVGPGLPP
AGPSGLPSLPPPAAPASGPPLSATQIKQEPAAEYETPESPVPPARSPSPPKVVDVP SHASQSARFNKH
LDRGFNSCARSDLYFVPLEGSKLAKKRADLVEKVRREAEQRAREEKERERERERERERERERELERSV
KLAQEGRAPVECPSLGPVPHRPPFEPGSAVATVPPYLGPDTPALRTLSEYARPHVMSPGNRNHPFYVPLG
AVDPGLLGYNVPALYSSDPAARERERERERDLRDLKPGFEVKPSELEPLHGVPGLDPFPRHGLAL
QPGPPGLHPFFHPSLGLERERLALAAGPALRPDMSYAERLAAERQHAERVAALGNDPLARLQMLNVT
HHHQHSHIHSHLHLHQQDAIHAASASVHPLIDPLASGSHLTRIPYPAGTLPNLLPHPLHENEVLRHQLF
AAPYRDLPASLSAPMSAAHQQLAMHAQSAELQRLALEQQQLWHAHPLHSVPLPAQEDYYSHLKKESDKP
L
  
```

TRTRPLEQKLISEEDLAANDILDYKDDDDKV

Chromatograms: https://cdn.origene.com/chromatograms/mk6790_a10.zip

Restriction Sites: SgfI-MluI

Cloning Scheme:

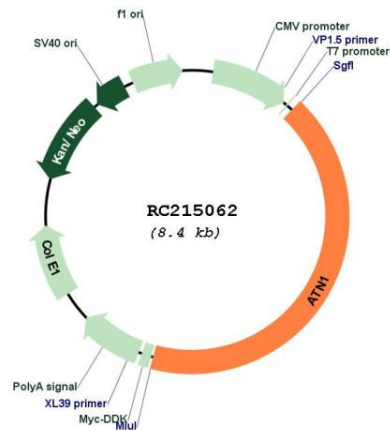


ACCN: NM_001007026

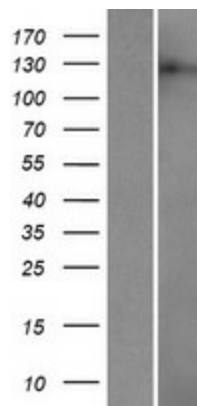
ORF Size: 3573 bp

OTI Disclaimer:	The molecular sequence of this clone aligns with the gene accession number as a point of reference only. However, individual transcript sequences of the same gene can differ through naturally occurring variations (e.g. polymorphisms), each with its own valid existence. This clone is substantially in agreement with the reference, but a complete review of all prevailing variants is recommended prior to use. More info
OTI Annotation:	This clone was engineered to express the complete ORF with an expression tag. Expression varies depending on the nature of the gene.
Components:	The ORF clone is ion-exchange column purified and shipped in a 2D barcoded Matrix tube containing 10ug of transfection-ready, dried plasmid DNA (reconstitute with 100 ul of water).
Reconstitution Method:	<ol style="list-style-type: none"> 1. Centrifuge at 5,000xg for 5min. 2. Carefully open the tube and add 100ul of sterile water to dissolve the DNA. 3. Close the tube and incubate for 10 minutes at room temperature. 4. Briefly vortex the tube and then do a quick spin (less than 5000xg) to concentrate the liquid at the bottom. 5. Store the suspended plasmid at -20°C. The DNA is stable for at least one year from date of shipping when stored at -20°C.
RefSeq:	NM_001007026.1 , NP_001007027.1
RefSeq Size:	4367 bp
RefSeq ORF:	3573 bp
Locus ID:	1822
UniProt ID:	P54259
Cytogenetics:	12p13.31
Protein Families:	Druggable Genome
MW:	125.5 kDa
Gene Summary:	Dentatorubral pallidoluysian atrophy (DRPLA) is a rare neurodegenerative disorder characterized by cerebellar ataxia, myoclonic epilepsy, choreoathetosis, and dementia. The disorder is related to the expansion from 7-35 copies to 49-93 copies of a trinucleotide repeat (CAG/CAA) within this gene. The encoded protein includes a serine repeat and a region of alternating acidic and basic amino acids, as well as the variable glutamine repeat. Alternative splicing results in two transcripts variants that encode the same protein. [provided by RefSeq, Jul 2016]

Product images:



Circular map for RC215062



Western blot validation of overexpression lysate (Cat# [LY423568]) using anti-DDK antibody (Cat# [TA50011-100]). Left: Cell lysates from untransfected HEK293T cells; Right: Cell lysates from HEK293T cells transfected with RC215062 using transfection reagent MegaTran 2.0 (Cat# [TT210002]).