

Product datasheet for **RC215059**

SPAG16 (NM_001025436) Human Tagged ORF Clone

Product data:

Product Type: Expression Plasmids
Product Name: SPAG16 (NM_001025436) Human Tagged ORF Clone
Tag: Myc-DDK
Symbol: SPAG16
Synonyms: PF20; WDR29
Mammalian Cell Selection: Neomycin
Vector: pCMV6-Entry (PS100001)
E. coli Selection: Kanamycin (25 ug/mL)
ORF Nucleotide Sequence: >RC215059 representing NM_001025436
Red=Cloning site Blue=ORF Green=Tags(s)

TTTTGTAATACGACTCACTATAGGGCGGCCGGAATTCGTCGACTGGATCCGGTACCGAGGAGATCTGCC
GCC**CGATCGCC**

ATGGCTGCTCAGCGAGGGATGCCAGCTCCGCCGTGAGGGTCCTGGAAGAGGCGTTGGGCATGGGTTTGA
CGGCAGCCGGGGACGCGAGGGACACGGCGGACGCGGTGGCGGCTGAGGGCGCCTACTACCTGGAACAGGT
CACCATAACTGAAGCATCTGAAGATGACTATGAATATGAAGAGATACCAGATGACAATTTTAGCATCCCA
GAAGGTGAAGAAGATCTGGCAAAAGCAATTCAGATGGCCCAAGAACAGGCTACAGATACTGAAATTTTGG
AACGAAAACAGTTCTTCTTCAAAGCATGCAGTACCTGAAGTAATAGAAGACTTCTCTGCAATTTCTT
GATCAAAATGGGAATGACCAGAACTCTTGATTGCTTTCAGTCTGAATGGTATGAGTTAATACAGAAAGGA
GTGACTGAACTTAGAACTGTTGGGAATGTTCCAGATGTCTACACCCAGATTATGCTTTTGGAAAATGAGA
ACAAAAATTTAAAGAAAGATTTGAAGCACTACAAACAAGCAGCTGAGTATGTTATTTTT

ACGCGTACGCGGCCGCTCGAGCAGAACTCATCTCAGAAGAGGATCTGGCAGCAATGATATCCTGGATT
ACAAGGATGACGACGATAAGGTTTAA

Protein Sequence: >RC215059 representing NM_001025436
Red=Cloning site Green=Tags(s)

MAAQRGMPSSAVRVLEEALGMGLTAAGDARDTADAVAAEGAYYLEQVTITEASEDDYEEYEEIPDDNFSIP
EGEEDLAKAIQMAQEATDTEILERKTVLPSKHAVPEVIEDFLCNFLIKMGMRTRLDCFQSEWYELIQKG
VTELRTVGNVPDYYTQIMLLENENKNLKKDLKHYKQAAEYVIF

TRTRPLEQKLISEEDLAANDILDYKDDDDKV

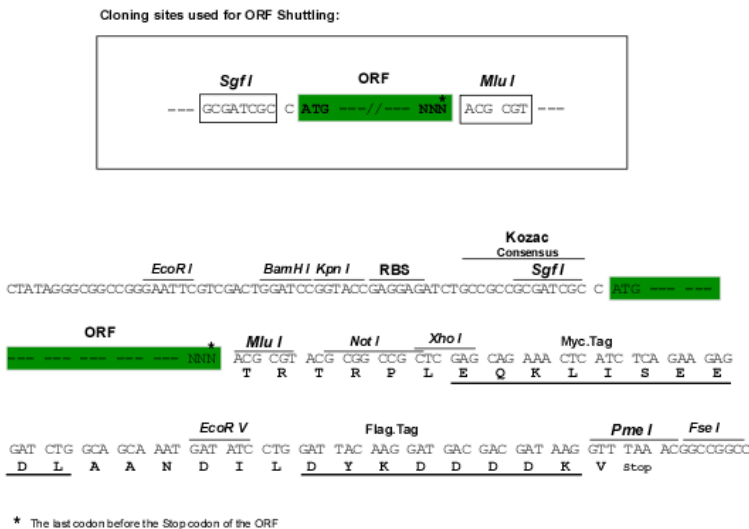
Chromatograms: https://cdn.origene.com/chromatograms/ja1253_a06.zip



[View online »](#)

Restriction Sites: SgfI-MluI

Cloning Scheme:



ACCN: NM_001025436

ORF Size: 549 bp

OTI Disclaimer: The molecular sequence of this clone aligns with the gene accession number as a point of reference only. However, individual transcript sequences of the same gene can differ through naturally occurring variations (e.g. polymorphisms), each with its own valid existence. This clone is substantially in agreement with the reference, but a complete review of all prevailing variants is recommended prior to use. [More info](#)

OTI Annotation: This clone was engineered to express the complete ORF with an expression tag. Expression varies depending on the nature of the gene.

Components: The ORF clone is ion-exchange column purified and shipped in a 2D barcoded Matrix tube containing 10ug of transfection-ready, dried plasmid DNA (reconstitute with 100 ul of water).

Reconstitution Method:

1. Centrifuge at 5,000xg for 5min.
2. Carefully open the tube and add 100ul of sterile water to dissolve the DNA.
3. Close the tube and incubate for 10 minutes at room temperature.
4. Briefly vortex the tube and then do a quick spin (less than 5000xg) to concentrate the liquid at the bottom.
5. Store the suspended plasmid at -20°C. The DNA is stable for at least one year from date of shipping when stored at -20°C.

RefSeq: [NM_001025436.2](#), [NP_001020607.1](#)

RefSeq Size: 1296 bp

RefSeq ORF: 552 bp

Locus ID: 79582

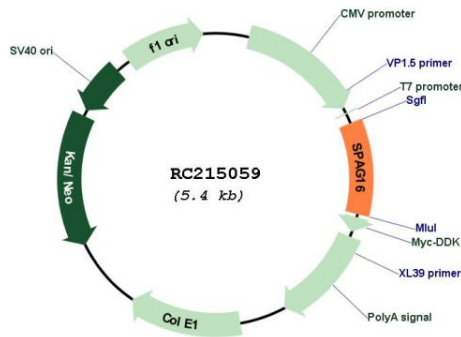
UniProt ID: [Q8N0X2](#)

Cytogenetics: 2q34

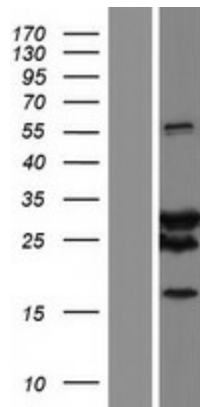
MW: 20.4 kDa

Gene Summary: Cilia and flagella are comprised of a microtubular backbone, the axoneme, which is organized by the basal body and surrounded by plasma membrane. SPAG16 encodes 2 major proteins that associate with the axoneme of sperm tail and the nucleus of postmeiotic germ cells, respectively (Zhang et al., 2007 [PubMed 17699735]).[supplied by OMIM, Jul 2008]

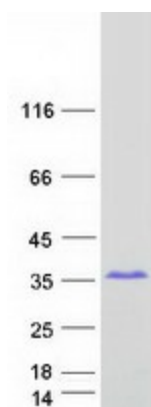
Product images:



Circular map for RC215059



Western blot validation of overexpression lysate (Cat# [LY422444]) using anti-DDK antibody (Cat# [TA50011-100]). Left: Cell lysates from untransfected HEK293T cells; Right: Cell lysates from HEK293T cells transfected with RC215059 using transfection reagent MegaTran 2.0 (Cat# [TT210002]).



Coomassie blue staining of purified SPAG16 protein (Cat# [TP315059]). The protein was produced from HEK293T cells transfected with SPAG16 cDNA clone (Cat# RC215059) using MegaTran 2.0 (Cat# [TT210002]).