

Product datasheet for **RC215051**

ACCN4 (ASIC4) (NM_018674) Human Tagged ORF Clone

Product data:

Product Type:	Expression Plasmids
Product Name:	ACCN4 (ASIC4) (NM_018674) Human Tagged ORF Clone
Tag:	Myc-DDK
Symbol:	ASIC4
Synonyms:	ACCN4; BNAC4
Vector:	pCMV6-Entry (PS100001)
E. coli Selection:	Kanamycin (25 ug/mL)
Cell Selection:	Neomycin



[View online »](#)

ORF Nucleotide
Sequence:

>RC215051 representing NM_018674
Red=Cloning site Blue=ORF Green=Tags(s)

TTTTGTAATACGACTCACTATAGGGCGGCCGGGAATTCGTCGACTGGATCCGGTACCGAGGAGATCTGCC
GCCGCGATCGCC

ATGCTGAGCGGAGCGGCTGGGGCTGCGCGGCGTGGCGGAGCAGCGCTCGCTCCCTCGCTCACTCGCTCGC
TCGCAGGGACACACGCAGGGGCTGACAGCTGTGCTGGTGTGCTGATAAGGGAAGCCACAAGGAGACGATCGA
GGAGAGAGACAAGCGGCAGCAGAGGCAGCAGCGGCAGAGGCAGCACCAGGGCTGCGGAGCTGCTGGGAGT
GGGAGTGAATCCCCACCTCGGGCCCCACCCTGTCCCTGTCCTTCCCGCTTGCCCTGAGTTTAGAAG
AGCAGCCGCTGCCACCACTGCCACTCGGGAGGGCACCAGGGCTGCTGGCTAGGGAGGGACAGGGCAGGGA
GGCTCTGGCCAGTCCCAGCAGCCGGGACAGATGCCGATCGAGATTGTGTGCAAAATCAAATTTGCTGAG
GAGGATGCGAAACCAAGGAGAAGGAGGCAGGGGATGAGCAGAGCCTCCTCGGGGCTGTTGCCCTGGAG
CAGCCCCCGAGACCTGGCCACCTTTGCCAGCACCAGCACCCTGCATGGACTGGGCCGGGCTGTGGCCC
AGGCCCCACGGACTGCGCAGAACCCTGTGGGCACTGGCCCTACTCACCTCGCTGGCTGCCTTCCTGTAC
CAGGCGGCTGGCCTGGCCCGGGGCTACCTGACCCGGCCTCACCTGGTGGCAATGGACCCCGCTGCCCCAG
CCCCAGTGGCGGGCTTCCCGGCTGTACCCCTCTGCAATATCAACCGCTTCCGGCATTCCGGCACTAGCGA
TGCCGACATCTTCCACCTGGCCAATCTGACAGGGCTGCCCCCAAGACCGGGATGGGCACCGTGGCGGT
GGCCTGCGCTACCCAGAGCCTGACATGGTAGACATCCTCAACCGCACTGGCCACCAGCTCGCCGACATGC
TTAAGAGCTGCAACTTCACTGGGCATCACTGCTCCGCCAGCAACTTCTCTGTGGTCTATACTCGCTATGG
GAAGTGTACACCTTCAACGCGGACCCCGGAGCTCGCTGCCAGCCGGGACAGGGGATGGGCAGTGGC
CTGGAGATCATGCTGGACATCCAGCAGGAGGAGTACCTGCCATCTGGAGGGAGACAAATGAGACGTCGT
TTGAGGCAGGTATTCGGGTGCAGATCCACAGCCAGGAGGAGCCGCTACATCCACCAGTGGGGTTCGG
GGTGTCCCAGGCTTCCAGACCTTTGTGCTCCTGCCAGGAACAGCGGCTGACCTACCTGCCCCAGCCCTGG
GGCAACTGCCGCGCAGAGAGTGAAGTCAAGGAGCCTGAGCTTCAAGGCTACTCGGCTACAGTGTGTCTG
CCTGCCGCTGCGCTGTGAAAAGGAGGCGTGTCTCAGCGCTGCCACTGCCGATGGTGCACATGCCAGA
CTCCCTGGGTGGGGCCCTGAGGGCCGCTTCTGCCCCACCCCTGCAACCTGACACGCTATGGGAAA
GAGATCTCCATGGTCAAGATCCCAACAGGGGCTCAGCCCGGTACCTGGCGAGGAAGTACAACCGCAACG
AGACCTACATACGGGAGAACTTCTGGTCTAGATGTCTTCTTTGAGGCCCTGACCTCTGAAGCCATGGA
GCAGCGAGCAGCCTATGGCCTGTCAGCCCTGCTGGGAGACCTCGGGGACAGATGGGCTGTTTATTGGG
GCCAGCATCCTCACGTTGCTGGAGATCCTCGACTACATCTATGAGGTGCTCTGGGATCGACTGAAGCGGG
TATGGAGGCGTCCAAGACCCCTGCGGACCTCCACTGGGGCATCTCCACTTTGGGGCTTCAGGAGCT
GAAGGAACAGAGTCCCTGCCCGAGCCTGGGCCGAGCGGAGGGTGGGGGGTTCAGCAGTCTGCTCCCAAT
CACCACCACCCACGGTCCCCAGGAGGTCTCTTTGAAGATTTGCTTGC

ACGCGTACGCGGCCGCTCGAGCAGAACTCATCTCAGAAGAGGATCTGGCAGCAATGATATCCTGGATT
ACAAGGATGACGACGATAAGGTTTAA

Protein Sequence: >RC215051 representing NM_018674
Red=Cloning site Green=Tags(s)

MLSGAAGAARRGGAALAPSLTRSLAGTHAGADSCAGADKGSFKETIEERDKRQQRQQRQHQGCGAAGS
 GSDSPTSGPHVPVLFPLALSLEEQLPPLPLGRAPGLLAREGQGREALASPSSRGQMPIEIVCKIKFAE
 EDAKPKKEEAGDEQSLLGAVAPGAAPRDLATFASTSTLHGLGRACGPGPHGLRRTLWALALLTSLAAFY
 QAAGLARGYLTRPHLVAMDPAAPVAGFPAVTLNINRFRHSALSDADIFHLANLTGLPPKDRDGHRAA
 GLRYPEPDMVDILNRTGHLADMLKSCNFSGHHCASNFVSVYTRYGKCYTFNADPRSSLP SRAGGMGSG
 LEIMLDIQQEEYLPWRETNETSFEAGIRVQIHSQEEPPYIHQLGFGVSPGFQTFVSCQEQLTYLPQPW
 GNCRAESELREPELQGYSAVSACRLRCEKEAVLQRCHCRMVHMPDSLGGGPEGPCFCTPCNLTRYGK
 EISMVRIPNRGSARYLARKYNRNETYIRENFLVDVFFEALTSEAMEQRAAYGLSALLGDLGGQMGFLIG
 ASILTLLEILDYIYEVSWDRLEKRVWRPKTPLRTSTGGISTLGLQELKEQSPCPSLGRAEGGVSSLLPN
 HHHPHGPPGGLFEDFAC

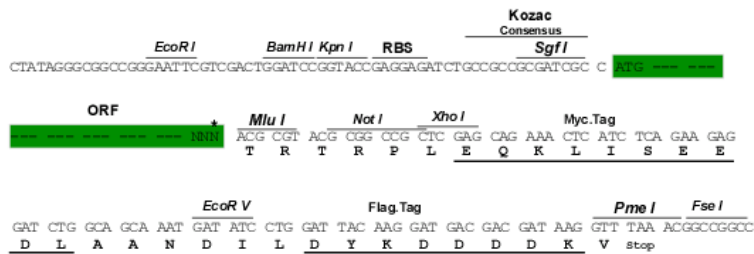
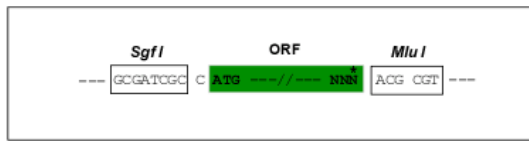
TRTRPLEQKLISEEDLAANDILDYKDDDDKV

Restriction Sites:

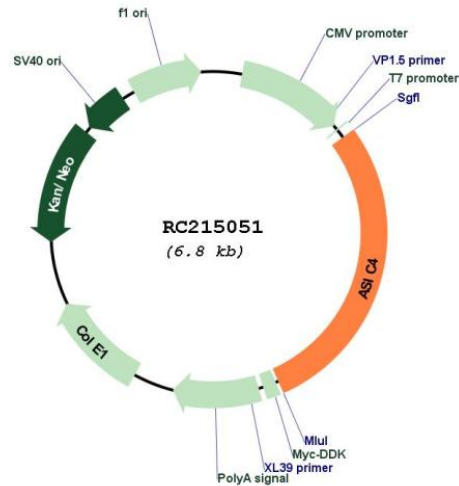
Cloning Scheme:

SgfI-MluI

Cloning sites used for ORF Shuttling:



* The last codon before the Stop codon of the ORF

Plasmid Map:


ACCN: NM_018674

ORF Size: 263 bp

OTI Disclaimer: The molecular sequence of this clone aligns with the gene accession number as a point of reference only. However, individual transcript sequences of the same gene can differ through naturally occurring variations (e.g. polymorphisms), each with its own valid existence. This clone is substantially in agreement with the reference, but a complete review of all prevailing variants is recommended prior to use. [More info](#)

OTI Annotation: This clone was engineered to express the complete ORF with an expression tag. Expression varies depending on the nature of the gene.

Components: The ORF clone is ion-exchange column purified and shipped in a 2D barcoded Matrix tube containing 10ug of transfection-ready, dried plasmid DNA (reconstitute with 100 ul of water).

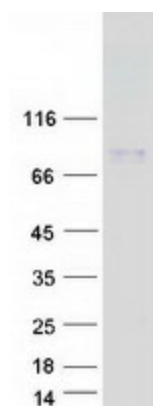
Reconstitution Method:

1. Centrifuge at 5,000xg for 5min.
2. Carefully open the tube and add 100ul of sterile water to dissolve the DNA.
3. Close the tube and incubate for 10 minutes at room temperature.
4. Briefly vortex the tube and then do a quick spin (less than 5000xg) to concentrate the liquid at the bottom.
5. Store the suspended plasmid at -20°C. The DNA is stable for at least one year from date of shipping when stored at -20°C.

RefSeq Size: 2754 bp

RefSeq ORF:	1620 bp
Locus ID:	55515
UniProt ID:	Q96FT7
Cytogenetics:	2q35
Protein Families:	Druggable Genome, Ion Channels: Other
MW:	72 kDa
Gene Summary:	This gene belongs to the superfamily of acid-sensing ion channels, which are proton-gated, amiloride-sensitive sodium channels. These channels have been implicated in synaptic transmission, pain perception as well as mechanoperception. This gene is predominantly expressed in the pituitary gland, and was considered a candidate for paroxysmal dystonic choreoathetosis (PDC), a movement disorder, however, no correlation was found between mutations in this gene and PDC. [provided by RefSeq, Feb 2012]

Product images:



Coomassie blue staining of purified ASIC4 protein (Cat# [TP315051]). The protein was produced from HEK293T cells transfected with ASIC4 cDNA clone (Cat# RC215051) using MegaTran 2.0 (Cat# [TT210002]).