

## Product datasheet for **RC215046**

### **NCOA62 (SNW1) (NM\_012245) Human Tagged ORF Clone**

#### **Product data:**

Product Type:	Expression Plasmids
Product Name:	NCOA62 (SNW1) (NM_012245) Human Tagged ORF Clone
Tag:	Myc-DDK
Symbol:	NCOA62
Synonyms:	Bx42; FUN20; NCOA-62; Prp45; PRPF45; SKIIP; SKIP; SKIP1
Mammalian Cell Selection:	Neomycin
Vector:	pCMV6-Entry (PS100001)
E. coli Selection:	Kanamycin (25 ug/mL)



[View online »](#)

**ORF Nucleotide Sequence:**

>RC215046 representing NM\_012245  
 Red=Cloning site Blue=ORF Green=Tags(s)

TTTTGTAATACGACTCACTATAGGGCGGCCGGAATTCGTCGACTGGATCCGGTACCGAGGAGATCTGCC  
 GCC**CGCATCGCC**

ATGGCGCTCACCAGCTTTTTACCTGCACCTACTCAGTATCTCAGGACCAGCTTGAGGCTGAAGAAAAGG  
 CAAGATCCAGAGATCACGGCAGACCTCACTGGTCTCCTCCGAAGAGAACCTCCCCGTACGGATACCG  
 GAAAGGCTGGATACCTCGGTTATTAGAGGATTTGGAGATGGAGGTGCTTTCCAGAGATCCATGTGGCC  
 CAGTATCCACTGGATATGGGACGAAAGAAAAAATGTCGAATGCGCTGGCCATTAGGTGGATTCTGAAG  
 GAAAAATAAATATGATGCAATTGCTCGACAAGGACAGTCAAAGACAAGGTCATTTATAGCAAATACAC  
 TGACCTGGTTCCAAAGGAGGTTATGAATGCAGATGATCCAGACCTGCAAAGGCCCGATGAAGAAGCTATT  
 AAAGAGATAACAGAAAAGACAAGAGTAGCCTTAGAAAAATCTGTATCACAGAAGGTGCGCCGAGCCATGC  
 CAGTTCGAGCAGCTGACAAATTGGCTCCTGCTCAGTATATCCGATACACACCATCTCAGCAAGGAGTGGC  
 ATTCAACTCTGGAGCTAAACAGAGGTTATTCCGATGGTAGAAAATGCAGAAAAGATCCAATGGAGCCTCCA  
 AGGTTCAAGATTAATAAGAAAATCCCCGGGGACCACCTTCTCCTCCTGCGCCTGTATGCATTCTCCTA  
 GCCGAAAGATGACTGTAAGGAACAACAAGAGTGAAGATTCTCCTTGTATTTCTAACTGGAAAAATGC  
 AAAGGGTTATACAATCCATTAGACAAACGTCTGGCTGCTGATGGAAGAGGACTACAGACAGTACACATA  
 AATGAAAATTTCCGCAAATGGCAGAAGCCCTCTACATTGCTGATCGGAAGGCTCGTGAAGCTGTGGAAA  
 TGCGTGCCCAAGTAGAGAGAAAAATGGCTCAGAAAAGAAAAGAAAAACATGAAGAGAACTTAGAGAAAT  
 GGCCAGAAAGCCAGGAAAAGAGAGCTGGGATCAAACTCATGTGAAAAAGAGGATGGGGAGGCCAGT  
 GAGAGGGATGAAATCCGGCATGACAGGCGAAAAGAGAGACAGCATGACCGGAATCTTTCCAGGGCAGCTC  
 CTGATAAGAGGTGAAACTTCAGAGAAAATGAAAATCGGGATATCAGTGAAGTTATTGCTCGGTGTTCC  
 TAATCCTCGGACTTCCAATGAAGTTGAGTATGACCAAAGGCTCTCAACCAATCCAAGGATGGACAGT  
 GGATTTGCAGGTGGAGAAGATGAAATTTATAATGTTTATGATCAAGCCTGGAGAGGTGGTAAAGATATGG  
 CCCAGAGTATTTATAGGCCAGTAAAAATCTGGACAAGGACATGTATGGTATGACCTAGAAGCCAGAAT  
 AAAGACCAACAGATTTGTTCCCGACAAGGAGTTTTCTGGTTCAGACCGTAGACAGAGAGGCCGAGAAGGA  
 CCAGTTCAGTTGAGGAAGATCCTTTGGTTGGACAAGTTTTGGAAGAAGCCAAACAGCATGGTGGCT  
 CTAAGACCCCTCAGATAGCAGCCGCCCAAGGAACACGAGCATGAAGGCAAGAAGAGGAGGAAGGAA

**ACGCGT**ACGCGGCCGCTCGAGCAGAAACTCATCTCAGAAGAGGATCTGGCAGCAAATGATATCTGGATT  
 ACAAGGATGACGACGATAAGGTTTAA

**Protein Sequence:**

>RC215046 representing NM\_012245  
 Red=Cloning site Green=Tags(s)

MALTSFLPAPTQLSQDQLEAEEKARSQRSRQTSLVSSRREPPPYGYRKGWIPRLLEDGFGGAFPEIHVA  
 QYPLDMGRKKMSNALAIQVDSEGKIKYDAIARQGQSKDKVIYSKYTDLVPKEVMNADDPDLQRPDEEAI  
 KEITEKTRVALEKSVSQKVAAMPVRAADKLAPAQYIRYTPSQGVAFNSGAKQVRIRMVEMQKDPMEPP  
 RFKINKKIPRPPSPAPVMHSPSRKMTVKEQEQWKIPPCISNWKNAKGYTIPLDKRLAADRGLQTVHI  
 NENFAKLAELYIADRKAREAVEMRAQVERKMAQKEKEKHEEKLREMAQKARERRAGIKTHVEKEDGEAR  
 ERDEIRHRRKERQHNRNLSRAAPDKRSKLQRNENRDISEVIALGVPNPRTSNEVYDQRLFNQSKGMS  
 GFAGGEDEIYNVYDQAWRGGKDMAQSIYRPSKLNLDKDMYGDDLEARIKTNRFVPDKEFGSDRRRQREG  
 PVQFEEDPFGLDKFLEEAKQHGGSKRPSDSSRPKEHEHEGKRRKE

**TRTRPLEQKLI**SEEDLAANDILDYKDDDDKV

**Chromatograms:**

[https://cdn.origene.com/chromatograms/mk6045\\_f01.zip](https://cdn.origene.com/chromatograms/mk6045_f01.zip)

**Restriction Sites:**

Sgfl-Mlul

**Cloning Scheme:**


**ACCN:** NM\_012245

**ORF Size:** 1608 bp

**OTI Disclaimer:** The molecular sequence of this clone aligns with the gene accession number as a point of reference only. However, individual transcript sequences of the same gene can differ through naturally occurring variations (e.g. polymorphisms), each with its own valid existence. This clone is substantially in agreement with the reference, but a complete review of all prevailing variants is recommended prior to use. [More info](#)

**OTI Annotation:** This clone was engineered to express the complete ORF with an expression tag. Expression varies depending on the nature of the gene.

**Components:** The ORF clone is ion-exchange column purified and shipped in a 2D barcoded Matrix tube containing 10ug of transfection-ready, dried plasmid DNA (reconstitute with 100 ul of water).

- Reconstitution Method:**
1. Centrifuge at 5,000xg for 5min.
  2. Carefully open the tube and add 100ul of sterile water to dissolve the DNA.
  3. Close the tube and incubate for 10 minutes at room temperature.
  4. Briefly vortex the tube and then do a quick spin (less than 5000xg) to concentrate the liquid at the bottom.
  5. Store the suspended plasmid at -20°C. The DNA is stable for at least one year from date of shipping when stored at -20°C.

**RefSeq:** [NM\\_012245.3](#)

**RefSeq Size:** 2146 bp

**RefSeq ORF:** 1611 bp

**Locus ID:** 22938

**UniProt ID:** [Q13573](#)

**Cytogenetics:** 14q24.3

**Domains:** SKIP\_SNW

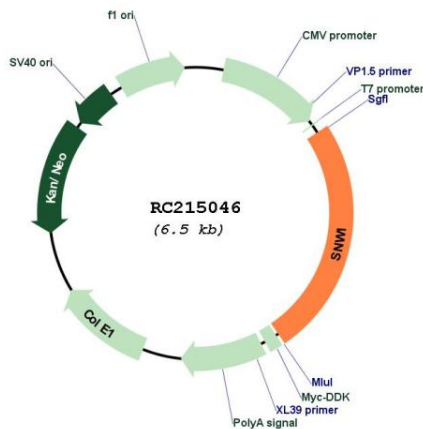
**Protein Families:** Druggable Genome, Transcription Factors

**Protein Pathways:** Notch signaling pathway, Spliceosome

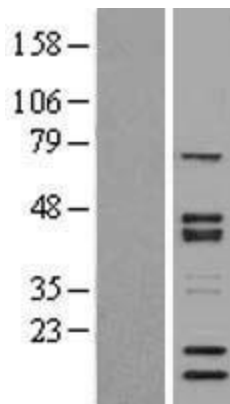
**MW:** 61.3 kDa

**Gene Summary:** This gene, a member of the SNW gene family, encodes a coactivator that enhances transcription from some Pol II promoters. This coactivator can bind to the ligand-binding domain of the vitamin D receptor and to retinoid receptors to enhance vitamin D-, retinoic acid-, estrogen-, and glucocorticoid-mediated gene expression. It can also function as a splicing factor by interacting with poly(A)-binding protein 2 to directly control the expression of muscle-specific genes at the transcriptional level. Finally, the protein may be involved in oncogenesis since it interacts with a region of SKI oncoproteins that is required for transforming activity. Alternative splicing results in multiple transcript variants. [provided by RefSeq, Jan 2016]

**Product images:**



Circular map for RC215046



Western blot validation of overexpression lysate (Cat# [LY402178]) using anti-DDK antibody (Cat# [TA50011-100]). Left: Cell lysates from untransfected HEK293T cells; Right: Cell lysates from HEK293T cells transfected with RC215046 using transfection reagent MegaTran 2.0 (Cat# [TT210002]).