

Product datasheet for RC215038

NFRKB (NM_006165) Human Tagged ORF Clone

Product data:

| | |
|---------------------------|---|
| Product Type: | Expression Plasmids |
| Product Name: | NFRKB (NM_006165) Human Tagged ORF Clone |
| Tag: | Myc-DDK |
| Symbol: | NFRKB |
| Synonyms: | INO80G |
| Mammalian Cell Selection: | Neomycin |
| Vector: | pCMV6-Entry (PS100001) |
| E. coli Selection: | Kanamycin (25 ug/mL) |
| ORF Nucleotide Sequence: | >RC215038 representing NM_006165 Red=Cloning site Blue=ORF Green=Tags(s) |

TTTTGTAATACGACTCACTATAGGGCGGCCGGAATTCGTCGACTGGATCCGGTACCGAGGAGATCTGCC
GCC**CGATCGCC**

ATGCATGTCTTTGTCCAGAGTACCTGTGGAGAAGAAACAATGGATTCTTAGACCATATGCTGACAGATC
CTCTGGAACCTGGTCCGTGTGGAGATGGCCATGGCAGCGCATCATGGAGGATTGCCTCTGGGAGGCAC
CAGAGTTAGTCTGCCGAGGACCTTCTGGAGGATCCTGAGATCTTCTTTGATGTTGTCAGCCTCTCAACA
TGGCAGGAAGTGTAAAGTATTCTCAACGTGAACACCTCCAGCAGTTTCTGCCCCAGTTTCTGAAGACA
GTGCTGAGCAGCAGAATGAACATCTTAGCCTTGTTCACTGGGAGAAGTTCCGCTTTGGAAACCTCT
GCACATTGCCAGAAAGCTTTTCCGAGACGACACTTAAACCCGAGGTGGTCAAGTACCGGCAGTTATGC
TTCAAGTACAGTACAAGCGCTACCTCAACTCCCAGCAGCAGTATTTCCATCGGCTGCTGAAGCAAATTC
TTGCTTCCCGAGTGATCTGCTGGAGATGGCCCGCGGAGTGGCCCCGCCCTTCCCTTCCGGCAGAAACG
CCCTTACCATCCCGCACACCTGAGGAGCGGGAGTGGCGGACCCAGCAGCGCTACTTGAAGGTCTTAAGG
GAAGTGAAGAGGAGTGTGGTGACACAGCCCTGTCATCTGATGAAGAGGCCACGTTGGATTTACAAGAAC
AATTTTCTTTGAAGATCTCAGCTCATGGCTTCCGAGCTCTCCAGCAGTTCTCCTAGTCTGCGGTGCC
CCTGCGGGTGGTCCACACTTTCAACCACGGATATGAAAACCGCAGATAAAGTAGAAGTGGGGACAGT
GACCTGAAGATAATGTTAAAGAAGCACCAGAGAAGCGAAACATCAGCCAGATCACCCGACCTTTTGA
CAGGGACCTGACTCTCAATGACATCATGACTCGAGTAAATGCTGGCAGGAAGGGCTCTCTGGCAGCCTT
ATATGACTTGGCTGTCTTAAAAAAGGTTAAGGAAAAAGAGGAAAAAGAAAGAAAGAAAAATAAAACG
ATCAAATCAGAGGCAGAGGACCTGGCCGAGCCGTAAGCAGTACTGAAGGGTTCGCACCTCTCTCACAGG
CCCCCTCTCCGCTGGCAATTCCTGCTATCAAGGAAGAGCCCTTGAAGACCTCAAGCCTTGCTTGAAT
CAATGAAATATCTCCAGCTTCTTCTCTTCTATTAGAGATCTTGCTGCTGGAGAGTCAAGGCTAGCCTT
CCTATGCTAGAGGAGCGAGTTTTGGATTGGCAGTCATCGCCAGCCAGCTCCCTCAACAGCTGGTTCTCTG
CGGCCCAACTGGGCTGAGTTGGTACTACCAGCCCTGCAGTATCTTGCTGGAGAAAGTCGAGCTGTTCC
TCCAGTTTCTCTCCATTTGTTGAATTCAAAGAGAAAACCCAGCAGTGAAGTTGCTTGGCAATCCCAA



[View online »](#)

GATAATGAAAAGGAATTAGCTGCTCTTCCAGCTATGGCTAGAGACCAAAGATCAGGCCTTCTGTAAAG
AAGAAAATGAAGACAGCTCAGATGCCACAACACCTGTCCCTCGGGTAAGAAGTACTATGTGGTGCGTCC
CAGCACGGGGGAGGAGAAAACGGGTTTTTCAGGAGCAGGAGCGTTACAGGTATAGCCAACCCATAAGGCG
TTCACCTTTTCGCATGCACGGCTTTGAGTCTGTGGTGGGGCCAGTGAAGGGCGTGTGGACAAGGAGACCT
CGCTCAACAAGGCTCGGGAGCACTCCCTGCTGCGCTCCGACCGCCTGCCTACGTACCATTCTGTCTCT
TGTTCCGGACGCTGCGGCTCGACTGCCTAATGGAGAAGGCACACGGGCAGAGATCTGTGAAGTGCCTAAG
GACTCCAGTTTTCTGCACCAGATGTACCAGCACTCAGGTAATACAGTAGTGAGTGGTGCCTAGGAT
GGCTACATTACGAAAAAGATCCCTGTGTGAAATACGACATTGGACGAAAGCTGTGGATCTACCTGCATCG
TGACCGGAGTGAAGAAGAGTTTGAGCGGATTACCAAGCACAAGCAGCTGCAGCTAAAGCCAGAAAAGCT
CTTCAGCAAAAACCCAAGCCCCATCCAAGGTGAAGTCCAGTAGCAAGGAGAGCTCCATAAAGTCTCTTA
GCAGTGGCCCTTCTGAGCAGAGCCAGATGAGCCTCAGTACTCCAGTATGCCACCCACCCAGTACACCC
TGTAACCCCCACCACACCAGCATTGCCCGCATTCCCATCTCCCCTCCACCTGTATCGGCAGTGAACAAA
AGCGGCCCTTCCACAGTCTCAGAACCAGCTAAGTCTAGCTCGGGTGTCTTCTGGTGTCTTACCAACAA
TGCCACATCTGGGAACAATGCTTTCCCGAGCTTCCAGCCAGACTGCACCCAGTTCTCAGGCTGCCGCCC
GGTCGTGAGCCACTCTGGCTCTGCTGGACTGTCTCAGGTGCGAGTGGTGGCCAGCCTAGCCTTCTGCT
GTTCCCCAGCAGTCGGGAGGGCCGGCACAGACATTGCCACAGATGCCAGCAGGACCGCAGATCCGGGTT
CAGCCACTGCCACACAGACCAAAGTAGTGCCCCAGACAGTAATGGCCACTGTGCCCGTCAAAGCGCAGAC
TACGGCAGCCACTGTGCAGCGGCTGGACCCGGGCAGACAGGGCTCACGGTGACAAGTCTCCCTGCCACA
GCCAGCCTGTGAGTAAGCCAGCCACGAGTTCTCCTGGGACCTCTGCTCCAGTGCTCCACGGCTGCCG
TCATTCAAAATGTACAGGACAGAACATCATCAAGCAGGTGGCAATCACTGGGCAGCTTGGTGTGAAGCC
CCAAACAGGCAACAGCATTCCACTCACAGCCACTAACTCCGCATCCAGGGTAAGGATGTATTGCGTCTG
CCGCCCTTCCATCACCACAGATGCCAAGGGCCAGACGGTCTCGGAATCACTCCGACATGATGGCCA
CATTGGCCAAGTCCCAGTTACCACAGTCAAATGACCCAGGACCTCTTCGGGACAGGAGGCAACACTAC
AGGCAAAAGGCATCTCTGCCACCTTACACGTCACTTCCAATCCAGTACATGCAGCTGATAGCCTGCCAAG
GCCAGTTCAGCCAGTGCCCTTCCACTCACAACAGGTACCACTGTGGTCAAAGTACTCCTGACCTCA
AGCCAACAGAAGCCTCAAGTTCCGCTTTTCGCTTGATGCCAGCTTTGGCGTGAGTGTGGCTGACCAGAA
GGGAAAAAGCACAGTGGCCTCTCAGAAGCAAAACCAGCTGCCACGATCCGCATCGTGCAGGGACTGGGA
GTGATGCCTCCAAAGCAGGCCAGACCATACCGTTGCAACCCACGCCAAGCAAGGGCCCTCGGTGGCCA
GTGGGTCTGGAAGTGTCCATACTCAGCGGTGCCTTACCCAGTATGAATGCTGCTGTGTCCAAGACTGT
AGCTGTGGCTTCTGGGGCTGCAAGCACCCCATCAGCATCAGCACAGGAGCCCCACCGTGGCCAGGTC
CCTGTCAGCACCCAGGTTGTGTCCAGTCCCAGGCTGGGAAGTGCCTACACGGATCACAGTTCCCCTCT
CTGTGATCAGCCAGCCAATGAAGGGCAAGAGCGTGGTACAGCCCCATCATCAAAGGCAACCTTGAGC
CAACCTCAGTGGGTTGGGCCGAACATCATCTCACAACATATGCCAGCAGGCACTAAGCTCATTGTGGC
AATAAGCCTGTTAGTTTCTCACTGCTCAGCAGTTGCAGCAGTTCAGCAGCAAGGTCAGGCCACACAGG
TGCGCATCCAGACTGTCCCTGCATCCCATCTCCAACAGGGAACAGCTTCTGGCTCCTCAAAGCAGTCTC
CACTGTTGTTGTGACTACAGTCCGCTCTCTAAACAGGCACCTGAGCAACAA

ACGCGTACGCGGCCGCTCGAGCAGAACTCATCTCAGAAGAGGATCTGGCAGCAATGATATCCTGGATT
ACAAGGATGACGACGATAAGGTTTAA

Protein Sequence: >RC215038 representing NM_006165
 Red=Cloning site Green=Tags(s)

```
MHV FVQSTCGEETMDSL DHMLTDPLELGP CGDGHGTRIMEDCLLGGTRVSLPEDLLEDPEIFFDVVSLST
WQEVLSDSQREHLQQFLPQFPEDSAEQQNELILALFSGENFRFGNPLHIAQKLF RDGHFNPEVVKYRQLC
FKSQYKRYLNSQQQYFHRL LKQILASRSDLLEMARRSGPALPFRQKRPS SRTPEEREWRTQORYLKVLR
EVKEECGD TALSSDEEATLDLQE QFSFEDLSSWLPSSPARSPSPAVPLRVVPTLSTTDMKTADKVELGDS
DLKIMLKKHHEKRKHQPDHPDLLTGD LTLNDIMTRV NAGRKGS LAALYDLAVLKKKVKEKEEKKKKIKT
IKSEAEDLAEPLSSTEGVAPLSQAPSPLAIPA IKEEPLEDLKPCLGINEISSSFFSLLLEI LLLLESQASL
PML EERVL DWQSSPASSLNSWFSAAPNWAELVLPALQYLAGE SRAVPSSFSPFVEFKEKTQQWKL LGSQ
DNEKELAA LFQLWLET KDQAFCKQENEDSSDATT PVPVRVTDYVVRPSTGEEKRVFQE QERYYSQPHKA
FTFRMHGFESVVG PVKGVFDKETSLNKAREHSLLRSDRPA YVTILSLVRDAAARLPNGEGTRAEICELLK
DSQFLAPDVTSTQVNTV VSGALDRLHYEKDPCVKYD IGRKLWIYLHRDRSEEEFERI HQAAAAKARKA
LQQKPKPPSKV KSSKESIKV LSSGPSEQS QMSLSDSSMPPTP VTPVTPPTPALPAIPISPPPVS AVNK
SGPSTVSEPAKSSSGVLLVSSPTMPHLGTMLSPASSQTAPSSQA AARVVSHSGSAGLSQVRVVAQPSLPA
VPQQSGGPAQTL PQMPAGPQIRVPATATQTKVVPQTVMATVPVKAQTAAATVQRPGPGQTGLT VTSLPAT
ASPVSKPATSSPGTSAPSASTAAVIQNV TGNIIKQVAITGQLGVK PQTGNSIPLTATNFRIQ GKDLVRL
PPSSITTDAKGQTVLRITPDMMATLAKS QVTTVKLTQDLFGTGGNTTGKGISATLHVTSNPVHAADSPAK
ASSASAPSSPTPTGTTVVKVTPDLKPT EASSSAFRLMPALGVSVADQK GKSTVASSEAKPAATIRIVQGLG
VMPPKAGQTI TVATHAKQGASVASGSGTVHTSAVSLPSMNA AVSKTVAVASGAASTPISISTGAPT VRQV
PVSTTVVSTSQAGKLPTRITVPLSVISQPMK GKS VVTAPIKGNL GANLSGLGRNIILTTMPAGTKLIAG
NKPVSFLTAQQLQQLQQGQATQVRIQTVPASHLQQGTASGSSKAVSTVVVTTAPSPKQAPEQQ
```

TRTRPLEQKLI SEEDLAANDILDYKDDDDKV

Chromatograms: https://cdn.origene.com/chromatograms/mk8027_h06.zip

Restriction Sites: SgfI-MluI

Cloning Scheme:

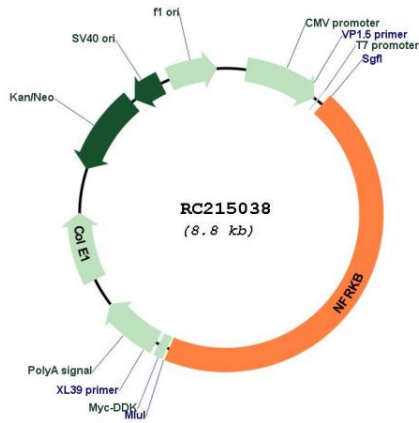


ACCN: NM_006165

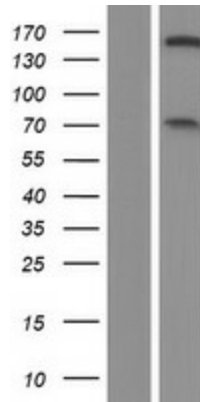
ORF Size: 3972 bp

| | |
|-------------------------------|---|
| OTI Disclaimer: | The molecular sequence of this clone aligns with the gene accession number as a point of reference only. However, individual transcript sequences of the same gene can differ through naturally occurring variations (e.g. polymorphisms), each with its own valid existence. This clone is substantially in agreement with the reference, but a complete review of all prevailing variants is recommended prior to use. More info |
| OTI Annotation: | This clone was engineered to express the complete ORF with an expression tag. Expression varies depending on the nature of the gene. |
| Components: | The ORF clone is ion-exchange column purified and shipped in a 2D barcoded Matrix tube containing 10ug of transfection-ready, dried plasmid DNA (reconstitute with 100 ul of water). |
| Reconstitution Method: | <ol style="list-style-type: none">1. Centrifuge at 5,000xg for 5min.2. Carefully open the tube and add 100ul of sterile water to dissolve the DNA.3. Close the tube and incubate for 10 minutes at room temperature.4. Briefly vortex the tube and then do a quick spin (less than 5000xg) to concentrate the liquid at the bottom.5. Store the suspended plasmid at -20°C. The DNA is stable for at least one year from date of shipping when stored at -20°C. |
| RefSeq: | NM_006165.2 , NP_006156.2 |
| RefSeq Size: | 4371 bp |
| RefSeq ORF: | 3975 bp |
| Locus ID: | 4798 |
| UniProt ID: | Q6P4R8 |
| Cytogenetics: | 11q24.3 |
| Protein Families: | Transcription Factors |
| MW: | 141.7 kDa |
| Gene Summary: | Binds to the DNA consensus sequence 5'-GGGGAATCTCC-3'. [UniProtKB/Swiss-Prot Function] |

Product images:



Circular map for RC215038



Western blot validation of overexpression lysate (Cat# [LY416826]) using anti-DDK antibody (Cat# [TA50011-100]). Left: Cell lysates from untransfected HEK293T cells; Right: Cell lysates from HEK293T cells transfected with RC215038 using transfection reagent MegaTran 2.0 (Cat# [TT210002]).