

Product datasheet for **RC215026**

ENT1 (SLC29A1) (NM_001078175) Human Tagged ORF Clone

Product data:

Product Type:	Expression Plasmids
Product Name:	ENT1 (SLC29A1) (NM_001078175) Human Tagged ORF Clone
Tag:	Myc-DDK
Symbol:	ENT1
Synonyms:	ENT1
Mammalian Cell Selection:	Neomycin
Vector:	pCMV6-Entry (PS100001)
E. coli Selection:	Kanamycin (25 ug/mL)



[View online »](#)

ORF Nucleotide Sequence:

>RC215026 ORF sequence
 Red=Cloning site Blue=ORF Green=Tags(s)

TTTTGTAATACGACTCACTATAGGGCGGCCGGGAATTCGTCGACTGGATCCGGTACCGAGGAGATCTGCC
 GCC**CGCATCGCC**

ATGACAACCAGTCACCAGCCTCAGGACAGATACAAAGCTGTCTGGCTTATCTTTCATGCTGGGTCTGG
 GAACGCTGCTCCCGTGAATTTTTTCATGACGGCCACTCAGTATTTACAAAACCGCTGGACATGTCCCA
 GAATGTGTCTTGGTCACTGCTGAACTGAGCAAGGACGCCAGGCGTCAGCCGCCCTGCAGCACCCCTTG
 CCTGAGCGGAACCTCTCAGTGCCATCTTCAACAATGTCATGACCCTATGTGCCATGCTGCCCTGCTGT
 TATTCACCTACCTCAACTCCTTCTGCATCAGAGGATCCCCAGTCCGTACGGATCCTGGGCAGCCTGGT
 GGCCATCTGCTGGTGTCTGATCACTGCCATCCTGGTGAAGGTGCAGCTGGATGCTCTGCCCTTCTTT
 GTCATCACCATGATCAAGATCGTGCTCATTAAATCATTGGTCCATCCTGCAGGGCAGCCTGTTGGTC
 TGGCTGGCCTTCTGCCTGCCAGCTACACGGCCCCATCATGAGTGGCCAGGGCCTAGCAGGCTTCTTTGC
 CTCGGTGGCCATGATCTGCGCTATTGCCAGTGGCTCGGAGCTATCAGAAAGTGCCTTCGGCTACTTTATC
 ACAGCCTGTGCTGTTATCATTTTGACCATCATCTGTTACCTGGGCTGCCCGCCTGGAATTCTACCGCT
 ACTACCAGCAGCTCAAGCTTGAAGGACCCGGGAGCAGGAGACCAAGTTGGACCTCATTAGCAAAGGAGA
 GGAGCCAAGAGCAGGCAAGAGGAATCTGGAGTTTCAGTCTCCAACCTCAGCCCAATGAAAGCCAC
 TCTATCAAAGCCATCCTGAAAAATCTCAGTCTGGCTTTCTCTGTCTGCTTACTTCACTATACCA
 TTGGGATGTTCCAGCCGTGACTGTTGAGGTCAAGTCCAGCATCGCAGGCAGCAGCACCTGGGAACGTTA
 CTTTCTTCTGTGCTGTTCTTGACTTTCAATATCTTTGACTGGTGGGCCGGAGCCTCACAGCTGTA
 TTCATGTGGCTGGGAAGGACAGCCGCTGGCTGCCAAGCCTGGTGTGGCCGGCTGGTGTGTGCCAC
 TGCTGCTGCTGTGCAACATTAAGCCCCGCCCTACCTGACTGTGGTCTTCGAGCAGCATGCCTGGTTCAT
 CTTCTTATGGCTGCCTTTGCCTTCTCCAACGGCTACCTCGCCAGCCTCTGCATGTGCTTCGGGCCCAAG
 AAAGTGAAGCCAGCTGAGGCAGAGACCGCAGGAGCCATCATGGCCTTCTTCTGTGTCTGGGTCTGGCAC
 TGGGGCTGTTTTCTCTTCTGTTCCGGGAATTGTG

ACGCGTACGCGGCCGCTCGAGCAGAAACTCATCTCAGAAGAGGATCTGGCAGCAAATGATATCCTGGATT
 ACAAGGATGACGACGATAAGGTTTAA

Protein Sequence:

>RC215026 protein sequence
 Red=Cloning site Green=Tags(s)

MTTSHQPQDRYKAVWLIFFMLGLGTLPLWNFFMTATQYFTNRLDMSQNVSLVTAELSKDAQASAAPAAPL
 PERNLSAIFNNVMTLCAMLPLLLFTYLNFLHQRIPQSVRILGSLVAILLVFLITAILVKVQLDALPFF
 VITMIKIVLINSFGAILQGSFLGLAGLLPASYTAPIMSGQLAGFFASVAMICAIASGSELSAFAFGYFI
 TACAVIDIITIIICYLGLPRLEFYRYQQQLKEGPEQETKLDLISKGEPRAGKEESGVSVSNSQPTNESH
 SIKAILKNI SVLAFSVCFIFTITIGMFPVAVTEVKSSIAGSSTWERYFIPVSCFLTFNIFDWLGRSLTAV
 FMWPGKDSRWLPSLVLARLVFVPLLLL CNIKPRRYLTVVFEHDAWFIFMAAFASNGYLASLCMCFGPK
 KVKPAEAEETAGAIMAFFLCLGLALGAVFSFLFRAIV

TRTRPLEQKLISEEDLAANDILDYKDDDDKV

Chromatograms:

https://cdn.origene.com/chromatograms/mk6675_h05.zip

Restriction Sites:

Sgfl-Mlul

Cloning Scheme:


ACCN: NM_001078175

ORF Size: 1368 bp

OTI Disclaimer: The molecular sequence of this clone aligns with the gene accession number as a point of reference only. However, individual transcript sequences of the same gene can differ through naturally occurring variations (e.g. polymorphisms), each with its own valid existence. This clone is substantially in agreement with the reference, but a complete review of all prevailing variants is recommended prior to use. [More info](#)

OTI Annotation: This clone was engineered to express the complete ORF with an expression tag. Expression varies depending on the nature of the gene.

Components: The ORF clone is ion-exchange column purified and shipped in a 2D barcoded Matrix tube containing 10ug of transfection-ready, dried plasmid DNA (reconstitute with 100 ul of water).

- Reconstitution Method:**
1. Centrifuge at 5,000xg for 5min.
 2. Carefully open the tube and add 100ul of sterile water to dissolve the DNA.
 3. Close the tube and incubate for 10 minutes at room temperature.
 4. Briefly vortex the tube and then do a quick spin (less than 5000xg) to concentrate the liquid at the bottom.
 5. Store the suspended plasmid at -20°C. The DNA is stable for at least one year from date of shipping when stored at -20°C.

RefSeq: [NM_001078175.3](#)

RefSeq Size: 2308 bp

RefSeq ORF: 1371 bp

Locus ID: 2030

UniProt ID: [Q99808](#)

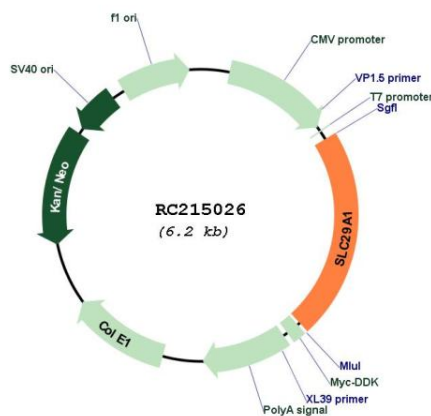
Cytogenetics: 6p21.1

Protein Families: Transmembrane

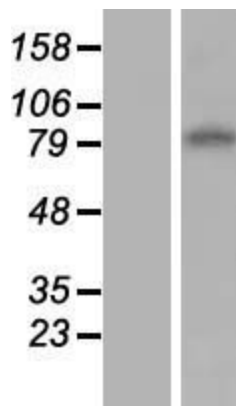
MW: 50.2 kDa

Gene Summary: This gene is a member of the equilibrative nucleoside transporter family. The gene encodes a transmembrane glycoprotein that localizes to the plasma and mitochondrial membranes and mediates the cellular uptake of nucleosides from the surrounding medium. The protein is categorized as an equilibrative (as opposed to concentrative) transporter that is sensitive to inhibition by nitrobenzylthioinosine (NBMPR). Nucleoside transporters are required for nucleotide synthesis in cells that lack de novo nucleoside synthesis pathways, and are also necessary for the uptake of cytotoxic nucleosides used for cancer and viral chemotherapies. Multiple alternatively spliced variants, encoding the same protein, have been found for this gene. [provided by RefSeq, Jul 2008]

Product images:



Circular map for RC215026



Western blot validation of overexpression lysate (Cat# [LY421498]) using anti-DDK antibody (Cat# [TA50011-100]). Left: Cell lysates from untransfected HEK293T cells; Right: Cell lysates from HEK293T cells transfected with RC215026 using transfection reagent MegaTran 2.0 (Cat# [TT210002]).