

Product datasheet for **RC215022**

ERMAP (NM_001017922) Human Tagged ORF Clone

Product data:

Product Type:	Expression Plasmids
Product Name:	ERMAP (NM_001017922) Human Tagged ORF Clone
Tag:	Myc-DDK
Symbol:	ERMAP
Synonyms:	BTN5; PRO2801; RD; SC
Mammalian Cell Selection:	Neomycin
Vector:	pCMV6-Entry (PS100001)
E. coli Selection:	Kanamycin (25 ug/mL)



[View online »](#)

ORF Nucleotide Sequence:

>RC215022 ORF sequence
 Red=Cloning site Blue=ORF Green=Tags(s)

TTTTGTAATACGACTCACTATAGGGCGGCCGGAATTCGTCGACTGGATCCGGTACCGAGGAGATCTGCC
 GCC**CGGATCGCC**

ATGGAGATGGCGAGTTCTGCTGGCTCCTGGCTCTCTGGCTGCCTCATCCCTCTCGTCTTCTCCGGCTGT
 CTGTGCATGTGTACAGCCACGCAGGGGATGCCGCAAGTTCACGTGGCCCTACTAGGGGCACAGCCGA
 GCTGCTCTGCCCTCTCTCCCTCTGGCCCGGACGGTACCCAAGGAGGTGAGGTGGCTGCGGTCCCCATTC
 CCGCAGCGCTCCCAGGCTGTTACACATATCCGGGATGGGAAGGACCAGGATGAAGATCTGATGCCGGAAT
 ATAAGGGGAGGACGGTGTAGTGAGAGATGCCCAAGAGGGAAGTGTCACTCTGCAGATCCTTGACGTGCG
 CCTTGAGGACCAAGGGTCTTACCGATGTCTGATCCAAGTTGAAATCTGAGTAAAGAGGACACCGTGATC
 CTGCAGGTTGCAGCCCCATCTGTGGGAGTCTCTCCCTCAGCAGTGGCTCTGGCTGTGATCCTGCCTG
 TCCTGGTACTTCTCATCATGGTGTGCCTTTGCCTTATCTGGAAGCAAAGAAGAGCAAAAGAAAAGCTTCT
 CTATGAACATGTGACGGAGGTGGACAATCTTCTTTCAGACCATGCTAAAGAAAAAGAAAACCCATAAA
 GCTGTCAAGAACTCCGGAGTGAAGTTGAAAAGAGCTGCAGCAAACCTCAGGCTGGAGAAGAGCCC
 GGTTCATTTTGTGCGAGTGACCCTGGACCCAGACACAGCACATCCCAAACCTCATCTTTCTGAGGACCA
 AAGATGTGTAAGGCTTGGAGACAGACGGCAGCCTGTACCTGACAACCCCAAGAGATTTGATTTCTGTTGTC
 AGCATCTAGGCTCTGAGTACTTACGACTGGCTGCCACTACTGGGAGGTGTATGTGGGAGACAAGACCA
 AATGGATTCTGGAGTATGTAGTGAGTCAGTGAGCAGGAAGGGGAAGGTTACTGCCTCACCTGCCAATGG
 AACTGGCTTCTGCGACAGAGTCGTGGGATTTCTGGACTATGAAGCAGGAGTCACTCTTTCTACAATG
 TGACCAACAAGTCCCACATCTTTACTTTTACCCACAATTTCTCTGGCCCCCTTCGCCCTTTCTTTGAACC
 TTGCCTTCATGATGGAGGAAAAACACAGCACCTCTAGTCAATTTGTTTCAGAACTACACAAATCAGAGGAA
 TCAATTGTCCCCAGGCCAGAAAGGAAAGGCCATGCTAATGGAGATGTGTCCCTCAAGGTGAACCTTCTT
 TACTACCCCGAAGGCCAGAGCTGAAGGATATAATCCTGTCCTTGCCCTGACCTTGCCCGAGCCCT
 TCAGGAGCTCAAGGCTCCTTCTTT

**ACGGTACGCGGCCGCTCGAGCAGAACTCATCTCAGAAGAGGATCTGGCAGCAAATGATATCCTGGATT
 ACAAGGATGACGACGATAAGGTTTAA**

Protein Sequence:

>RC215022 protein sequence
 Red=Cloning site Green=Tags(s)

MEMASSAGSWLSGCLIPLVFLRLSVHVSAGHAGDAGKFHVALLGGTAELLCPLSLWPGTVPKEVRWLRSPF
 PQRSQAVHIFRDGKDQEDLMPEYKGRVTVLRDAQEGSVTLQILDVRLDQGSYRCLIQVGNLSKEDTVI
 LQVAAPSVMGSLSPSAVALAVILPVLVLLIMVCLLIWKQRRAKEKLLYEHVTEVDNLLSDHAKEKGLHK
 AVKKLRSELKLRKRAAANSWRRARLHFVAVTLDPDTAHPKLLIILEDQRCVRLGDRRQVPDNPQRFDFVV
 SILGSEYFTTGCHYWEVYVGDKTWILGVCSESVSRKGVKVTASPANGHWLLRQSRGNEYEALTSPTQSF
 LKEPPRCVGIFLDYEAGVISFYNVNKNSHIFTFTHNFSGPLRPFEPCLHDGKNTAPLVICSELHKSEE
 SIVPRPEKGHANGDVSLKVNSSLLPPKAPKLDIILSLPPDLGPALQELKAPSF

TRTRPLEQKLISEEDLAANDILDYKDDDDKV

Chromatograms:

https://cdn.origene.com/chromatograms/mk6601_d12.zip

Restriction Sites:

Sgfl-MluI

Cloning Scheme:

Cloning sites used for ORF Shutting:



* The last codon before the Stop codon of the ORF

ACCN: NM_001017922

ORF Size: 1425 bp

OTI Disclaimer: The molecular sequence of this clone aligns with the gene accession number as a point of reference only. However, individual transcript sequences of the same gene can differ through naturally occurring variations (e.g. polymorphisms), each with its own valid existence. This clone is substantially in agreement with the reference, but a complete review of all prevailing variants is recommended prior to use. [More info](#)
OTI Annotation: This clone was engineered to express the complete ORF with an expression tag. Expression varies depending on the nature of the gene.

Components: The ORF clone is ion-exchange column purified and shipped in a 2D barcoded Matrix tube containing 10ug of transfection-ready, dried plasmid DNA (reconstitute with 100 ul of water).

Reconstitution Method:

1. Centrifuge at 5,000xg for 5min.
2. Carefully open the tube and add 100ul of sterile water to dissolve the DNA.
3. Close the tube and incubate for 10 minutes at room temperature.
4. Briefly vortex the tube and then do a quick spin (less than 5000xg) to concentrate the liquid at the bottom.
5. Store the suspended plasmid at -20°C. The DNA is stable for at least one year from date of shipping when stored at -20°C.

RefSeq: [NM_001017922.2](#)
RefSeq Size: 3485 bp

RefSeq ORF: 1428 bp

Locus ID: 114625

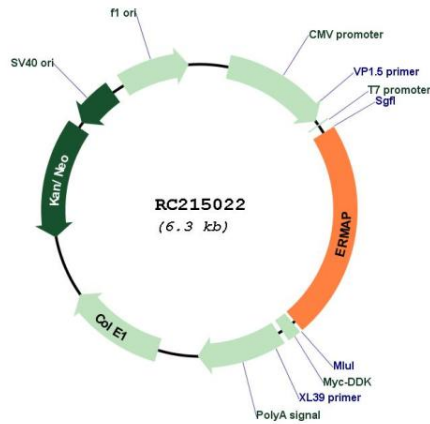
UniProt ID: [Q96PL5](#)
Cytogenetics: 1p34.2

Protein Families: Druggable Genome, Transmembrane

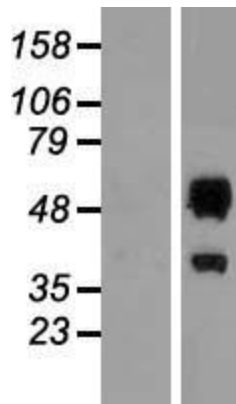
MW: 52.6 kDa

Gene Summary: The protein encoded by this gene is a cell surface transmembrane protein that may act as an erythroid cell receptor, possibly as a mediator of cell adhesion. Polymorphisms in this gene are responsible for the Scianna/Radin blood group system. Two transcript variants encoding the same protein have been found for this gene. [provided by RefSeq, Jul 2008]

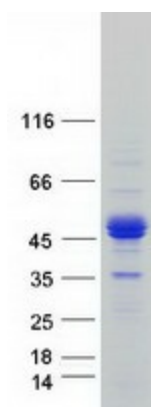
Product images:



Circular map for RC215022



Western blot validation of overexpression lysate (Cat# [LY413005]) using anti-DDK antibody (Cat# [TA50011-100]). Left: Cell lysates from untransfected HEK293T cells; Right: Cell lysates from HEK293T cells transfected with [RC224743] using transfection reagent MegaTran 2.0 (Cat# [TT210002]).



Coomassie blue staining of purified ERMAP protein (Cat# [TP315022]). The protein was produced from HEK293T cells transfected with ERMAP cDNA clone (Cat# RC215022) using MegaTran 2.0 (Cat# [TT210002]).