

Product datasheet for **RC215019**

DHRS4L2 (NM_198083) Human Tagged ORF Clone

Product data:

Product Type:	Expression Plasmids
Product Name:	DHRS4L2 (NM_198083) Human Tagged ORF Clone
Tag:	Myc-DDK
Symbol:	DHRS4L2
Synonyms:	SDR25C3
Mammalian Cell Selection:	Neomycin
Vector:	pCMV6-Entry (PS100001)
E. coli Selection:	Kanamycin (25 ug/mL)
ORF Nucleotide Sequence:	>RC215019 ORF sequence Red=Cloning site Blue=ORF Green=Tags(s)

TTTTGTAATACGACTCACTATAGGGCGGCCGGAATTCGTCGACTGGATCCGGTACCGAGGAGATCTGCCGCC**CGATCGCC**

ATGGCCAGGCTGCTAGGCCTCTGTGCCTGGGCACGGAAGTCGGTGCGGTTGGCCAGCTCCAGGATGACCCGCCGGGACCCGCTCACAATAAGGTGGCCCTGGTAACGGCCTCCACCGACGGGATCGGCTTCGCCATCGCCGGCGTTTGGCCAGGACAGGGCCACGTGGTCGTCAGCAGCCGGAAGCAGCAGAATGTGGACCAGGCGTGGGCCACGCTGCAGGGGAGGGGCTGAGCGTGACGGGCACTGTGTGCCATGTGGGAAGCGGAGGACGGGAGCGGCTGGTGGCCATGGCTGTGAAGCTTCATGGAGGTATCGATATCCTAGTCTCCAATGCTGCTGTCAACCTTTCTTTGGAAGCCTAATGGATGTCACCGAGGAGGTGTGGGACAAGACTCTGGACATTAATGTGAAGGCCCCAGCCCTGATGACAAAGGCAGTGGTGCCAGAAATGGAGAAACGAGGAGCGGCTCAGTGGTGA TCGTGTCTTCCATAGCAGCCTTCAGTCCATCTCCTGGCTTCAGTCTTACAATGTGAGTAAACAGCCTTGCTGGGCTCAACAATACCCTGGCCATAGAGCTGGCCCAAGGAACATTAGGGTGAAGTGCCTGCACCTGACTTATCAAGACTAGCTTCAGCAGGATGCTCTGGATGGACAAGGAAAAAGGAAAGCA

ACGCGTACGCGGGCCGCTCGAGCAGAAACTCATCTCAGAAGAGGATCTGGCAGCAATGATATCCTGGATTACAAGGATGACGACGATAAGGTTTAA



[View online »](#)

Protein Sequence: >RC215019 protein sequence
Red=Cloning site Green=Tags(s)

MARLLGLCAWARKSVRLASSRMTRRDPLTNKVALVTASTDGIGFAIARRLAQDRAHVVVSSRKQQNVQQA
 VATLQGEGLSVTGTVCHVGKAEDRERLVAMAVKLHGGIDILVSNAAVNPFPGSLMDVTEEVWDKTLDINV
 KAPALMTKAVVPEMEKRGGGSVVIVSSIAAFSPSPGFSYVNVSKTALLGLNNTLAIELAPRNIRVNCLHL
 DLSRLASAGCSGWTRKKRKA

TRTRPLEQKLISEEDLAANDILDYKDDDDKV

Chromatograms: https://cdn.origene.com/chromatograms/mk6096_c04.zip

Restriction Sites: SgfI-MluI

Cloning Scheme:



ACCN: NM_198083

ORF Size: 690 bp

OTI Disclaimer: The molecular sequence of this clone aligns with the gene accession number as a point of reference only. However, individual transcript sequences of the same gene can differ through naturally occurring variations (e.g. polymorphisms), each with its own valid existence. This clone is substantially in agreement with the reference, but a complete review of all prevailing variants is recommended prior to use. [More info](#)

OTI Annotation: This clone was engineered to express the complete ORF with an expression tag. Expression varies depending on the nature of the gene.

Components: The ORF clone is ion-exchange column purified and shipped in a 2D barcoded Matrix tube containing 10ug of transfection-ready, dried plasmid DNA (reconstitute with 100 ul of water).

Reconstitution Method:

1. Centrifuge at 5,000xg for 5min.
2. Carefully open the tube and add 100ul of sterile water to dissolve the DNA.
3. Close the tube and incubate for 10 minutes at room temperature.
4. Briefly vortex the tube and then do a quick spin (less than 5000xg) to concentrate the liquid at the bottom.
5. Store the suspended plasmid at -20°C. The DNA is stable for at least one year from date of shipping when stored at -20°C.

RefSeq: [NM_198083.1](#), [NP_932349.1](#)

RefSeq Size: 1384 bp

RefSeq ORF: 699 bp

Locus ID: 317749

Cytogenetics: 14q11.2

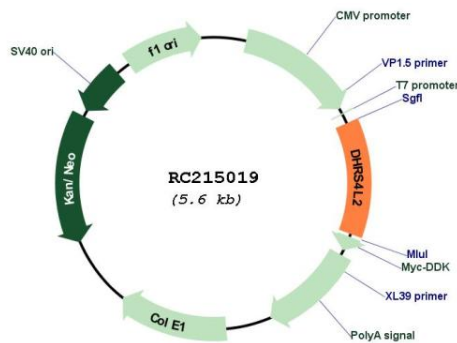
Protein Families: Druggable Genome

Protein Pathways: Metabolic pathways, Retinol metabolism

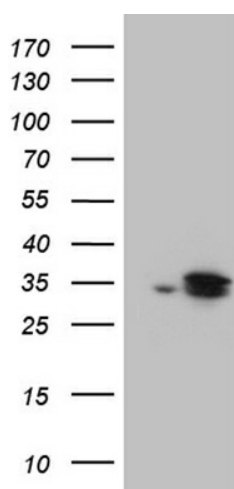
MW: 24.6 kDa

Gene Summary: This gene encodes a member of the short chain dehydrogenase reductase family. The encoded protein may be an NADPH dependent retinol oxidoreductase. Alternate splicing results in multiple transcript variants. [provided by RefSeq, Aug 2010]

Product images:



Circular map for RC215019



HEK293T cells were transfected with the pCMV6-ENTRY control (Cat# [PS100001], Left lane) or pCMV6-ENTRY DHRS4L2 (Cat# RC215019, Right lane) cDNA for 48 hrs and lysed. Equivalent amounts of cell lysates (5 ug per lane) were separated by SDS-PAGE and immunoblotted with anti-DHRS4L2 (Cat# [TA810278])(1:2000).