

Product datasheet for RC215018

AGL (NM_000643) Human Tagged ORF Clone

Product data:

Product Type:	Expression Plasmids
Product Name:	AGL (NM_000643) Human Tagged ORF Clone
Tag:	Myc-DDK
Symbol:	AGL
Synonyms:	GDE
Mammalian Cell Selection:	Neomycin
Vector:	pCMV6-Entry (PS100001)
E. coli Selection:	Kanamycin (25 ug/mL)
ORF Nucleotide Sequence:	>RC215018 representing NM_000643 Red=Cloning site Blue=ORF Green=Tags(s)

TTTTGTAATACGACTCACTATAGGGCGGCCGGAATTCGTCGACTGGATCCGGTACCGAGGAGATCTGCC
GCC**CGATCGCC**

ATGGGACACAGTAAACAGATTCTGAATTTACTTCTGAACGAAATGGAGAACTGGAAAAGACCCTTTCA
GACTTGAACAAGGGTATGAGCTACAGTCCGATTAGGCCCACTTTACAGGAAAAGCAGTTACCGTGTA
TACAAATTACCCATTTCTGGAGAAACATTTAATAGAGAAAAATCCGTTCTCTGGATTGGGAAAATCCA
ACAGAAAGAGAAGATGATTCTGATAAATACTGAACTTAATCTGCAACAATCTGGTTCATTTAGTATT
ATTTCTTCAAGGAAATGAGAAAAGTGGTGGAGTTACATAGTTGTGGACCCATTTTACGTGTTGGTGC
TGATAATCATGTGCTACCCTGGACTGTGTTACTTTCAGACATTTTAGCTAAGTGTGGGACCTTTT
GATGAATGGGAAAGCAGACTTAGGGTTGCAAAAAGAAATCAGGCTACAACATGATTCATTTTACCCATTGC
AGACTCTTGGACTATCTAGGTCATGCTACTCCCTTGCCAAATCAGTTAGAATTAATCCTGACTTTTCAAG
ACCTAATAGAAAGTATACCTGGAATGATGTTGGACAGCTAGTGGAAAAATTAATAAGGAATGGAATGTT
ATTTGTATTACTGATGTTGTCTACAATCATACTGCTGCTAATAGTAAATGGATCCAGGAACATCCAGAA
GTGCCTATAATCTGTGAATCTCCACACTTAAAACCTGCCTGGGCTTAGACAGAGCAGCTTTGGCGTTT
CTCCTGTGATGTTGCAGAAGGAAATACAAAGAAAAGGAATACCTGCTTTGATTGAAAATGATCACCAT
ATGAATTCATCCGAAAATAATTTGGGAGGATATTTTCCAAAGCTTAACTCTGGGAATTTTCCAAAG
TAGATGTCAACAAAGCGTTGAGCAATTTAGAAGACTTCTTACACAAGAAAATAGGCGAGTAACCAAGTC
TGATCCAAACCAACACCTTACGATTATTCAAGATCCTGAATACAGACGGTTTGGCTGTACTGTAGATATG
AACATTGCACTAACGACTTTTATACCACATGACAAGGGGCCAGCAGCAATTGAAGAATGCTGTAATTTGGT
TTCATAAAAGAAATGGAGGAATTAATTCAGAGAAGCATCGACTCATTAATATCATCAGGAACAGGCAGT
TAATTGCCTTTTGGGAAATGTGTTTTATGAACGACTGGCTGGCCATGGTCCAAAAGTGGACCTGCTACT
AGAAAGCATCCTTTAGTTACCAGGATTTTACTTTCCATTTGAAGAGATAGACTTCTCCATGGAAGAAT
CTATGATTCATCTGCCAAATAAAGCTTGTCTGATGGCACACAATGGATGGGTAAATGGGAGATGATCC
TCTTCAAAGCTTTGCTGAACCGGTTTCAAGTTTACCTAAGGAGAGAATTTTGTGGGAGACAGT



[View online »](#)

GTAAATTACGCTATGGGAATAAACAGAGGACTGTCCTTATCTCTGGGCACACATGAAAAATACACTG
AAATAACTGCACTTATTTCCAGGGAGTACGTCTTGATAACTGCCACTCAACACCTTCCACGTAGCTGA
GTACATGTTGGATGCTGCTAGGAATTTGCAACCAATTTATATGTAGTAGCTGAACTGTTACAGGAAGT
GAAGATCTGGACAATGCTTTGTTACTAGACTGGGCATTAGTTCCTTAATAAGAGAGGCAATGAGTGCAT
ATAATAGTCATGAAGAGGGCAGATTAGTTTACCAGATATGGAGGAGAACCTGTTGGATCCTTTGTTACGCC
CTGTTTGGAGCCTTTAAATGCCAGCTATTGCACATGCCCTGTTTATGGATATTACGCATGATAATGAGTGT
CCTATTGTGCATAGATCAGCGTATGATGCTCTTCCAAGTACTACAATTGTTTCTATGGCATGTTGTGCTA
GTGGAAGTACAAGAGGCTATGATGAATTAGTGCCCTCATCAGATTTCAAGTGGTTTCTGAAGAACGGTTTTA
CACTAAGTGAATCCTGAAGCATTGCCCTCAAACACAGGTGAAGTTAATTTCAAAGCGGCATTATTGCA
GCCAGGTGTGCTATCAGTAACTTCATCAGGAGCTTGGAGCCAAGGGTTTTATTACAGGTGTATGTGGATC
AAGTTGATGAAGACATAGTGGCAGTAACAAGACACTCACCTAGCATCCATCAGTCTGTTGTGGCTGTATC
TAGAACTGCTTTCAGGAATCCCAAGACTTCATTTTACAGCAAGGAAGTGCCTCAAATGTGCATCCCTGGC
AAAATTGAAGAAGTAGTCTTGAAGCTAGAATTTGAGAGAAACACGAAACCTTATAGGAAGGATGAGA
ATTCATCAATGGAACACCAGATATCACAGTAGAAATAGAGAACATATTCAGCTTAATGAAAGTAAAT
TGTTAAACAAGCTGGAGTTGCCACAAAAGGGCCCAATGAATATATTCAAGAAATAGAATTTGAAAACCTG
TCTCCAGGAAGTGTATTATATTAGAGTTAGTCTTGATCCACATGCACAAGTCCGCTGTTGGAATCTTC
GAAATCATCTGACACAATTCAGTCCCTCACTTTAAATCTGGCAGCCTAGCTGTTGACAATGCAGATCCAT
ATTAATAATCCTTTTGCTTCTCTTGCCTCCAGATTAACCTTTGGCTGAGCTAAATCAGATCCTTTACCGA
TGTGAATCAGAAGAAAAGGAAGATGGTGGAGGGTGTATGACATACCAAACCTGGTCCAGCCCTTAAATATG
CAGGCTTCAAGGTTTAAATGCTGTATTGGCAGAAATAAGACCAAAGAATGACTTGGGGCATCCTTTTTG
TAATAATTTGAGATCTGGAGATTGGATGATTGACTATGTCAGTAACCGGCTTATTTACAGATCAGGAAT
ATTGCTGAAGTTGGTAAATGGTGCAGGCTATGTTCTTACCTGAAGCAGATCCACCGTTACCTTATCC
CATGTTACTTTGATGCTATATTAATTTGGTGCATATACCCTCTTCTGGATACAGCATGGAAGCAGATGTC
AAGCTTTGTTTCAAGTGGTTCAACCTTTGTGAAACACCTTTTATTGGGTTCAAGTCAACTGTGTGGAGTA
GGAAAATTCCTTCCCTGCCAATCTTTTACCTGCCCTAATGGATGTACCTTATAGGTTAAATGAGATCA
CAAAAGAAAAGGAGCAATGTTGTGTTTCTCTAGCTGCAGGCTTACCTCATTTTTTCTTCTGGTATTTTCCG
CTGCTGGGAAGGGATACTTTTATTGCACTTAGAGGTATACTGCTGATTACTGGACGCTATGTAGAAGCC
AGGAATATTTTTAGCATTGCGGGTACCCTGAGGCATGGTCTCATTCTAATCTACTGGGTGAAGGAA
TTTTATGCCAGATACAATGTCGGGATGCTGTGTGGTGGTGGCTGCAGTGTATCCAGGATTACTGAAAAAT
GGTTCAAATGGTCTAGACATTTCAAGTGCCAGTTCCAGAATGTATCCTACAGATGATTCTGCTCCT
TTGCCCTGCTGGCACACTGGATCAGCCATTGTTTGAAGTCATACAGGAAGCAATGCAAAAACACATGCAGG
GCATACAGTTCCGAGAAAAGGAATGCTGGTCCCCAGATAGATCGAAACATGAAGGACGAAGGTTTTAATAT
AACTGCAGGAGTTGATGAAGAAAACAGGATTTGTTTATGGAGGAAATCGTTTCAATTGTGGCACATGGATG
GATAAAATGGGAGAAAAGTACAGAGCTAGAAAACAGAGGAATCCCAGCCACACCAAGAGATGGGTCTGCTG
TGGAAATGTGGGCTGAGTAAATCTGCTGTTGCTGGTGTGCTGGAATTAACAAAAAAATATTTTCCC
TTATCATGAAGTCACAGTAAAAAGACATGGAAAGGCTATAAAGGTCTCATATGATGAGTGGAACAGAAAA
ATACAAGACAACCTTTGAAAAGCTATTTTCAATGTTTCCGAAGACCCTTCAAGTTTAAATGAAAAGCATCCAA
ATCTGGTTCACAAACGTGGCATAACAAGATAGTTATGGAGCTTCAAGTCCCTGGTGTGACTATCAGCT
CAGGCCTAATTTTACCATAGCAATGGTTGTGGCCCTGAGCTTTTACTACAGAAAAGCATGGAAGCT
TTGGAGATTGCAGAAAAAAATGCTTGGTCCCCTTGGCATGAAAACCTTATAGTCCAGATGATATGGTTT
ACTGTGGAATTTATGACAATGCATTAGACAATGACAACACTACAATCTTGCTAAAGGTTTCAATTTATACCA
AGGACCTGAGTGGCTGTGGCCTATTGGGTATTTTCTCGTGCAAAATATATTTTTCCAGATTGATGGGC
CCGGAGACTACTGCAAAGACTATAGTTTTGGTTAAAAATGTTCTTTCCCGACATTATGTTTCATCTTGAGA
GATCCCCCTGGAAAGGACTTCCAGAACTGACCAATGAGAATGCCAGTACTGTCTTTTACAGTGTGAAAC
ACAAGCCTGGTCAATTGCTACTATTCTTGGACACTTTTATGATTTA

ACGCGTACGCGGCCGCTCGAGCAGAACTCATCTCAGAAGAGGATCTGGCAGCAATGATATCCTGGATT
ACAAGGATGACGACGATAAGGTTTAA

Protein Sequence: >RC215018 representing NM_000643
 Red=Cloning site Green=Tags(s)

```

MGHSKQIRILLNEMEKLEKTLFRLEQGYELQFRLGPTLQGKAVTYVTNYPFPGETFNREKFRSLDWENP
TEREDDSKYCKLNLQQSGSFQYYFLQGNKSGGGYIVVDPILRVGADNHVLPDCVTLQTFLLAKCLGPF
DEWESRLRVAKESGYNMIHFTPLQTLGLSRCYSLANQLELNPDFSRPNRKYTWNDVQGQLEKLLKEWNV
ICITDVVYNHTAANSKWIQEHPECAYNLVNSPHLKPWVLDLDRALWRFSCDVAEGKYKEKGPALIENTDHH
MNSIRKIIWEDIFPKLKLWEFFQVDVNKAVEQFRRLLTQENRRVTKSDPNQHLTI IQDPEYRRFGCTVDM
NIALTTFIPHDKGPAAIIECCNWFHHRMEELNSEKHRLINYHQEQAVNCLLGNVFYERLAGHGPKLGPVT
RKHPLVTRYFTFPFEEIDF SMEESMIHLPNKACFLMAHNGWVMGDDPLRNFAEPGSEVYLRRELICWGDS
VKLRYGNKPEDCPYLWAHMKKYTEITATYFQGVRLDNCHSTPLHVAEYMLDAARNLQPNLYVVAELFTGS
EDLDNVFVTRLGISSLIREAMSAYNSHEEGRLVYRYGGEPVGSFVQPCLRPLMPAIAHALFMDITHDNEC
PIVHRSAYDALPSTTIVSMACCSGSTRGYDELVPHQISVVSEERFYTKWNPEALPSNTGEVNFQSGIIA
ARCAISKLHQELGAKGFIQVYVDQVDEDIVAVTRHSPSIHQSVAVSRTAFRNPKTSFYSKEVPQMCIPG
KIEEVVLEARTIERNTKPYRKDENSINGTPDITVEIREHIQLNESKIVKQAGVATKGPNEYIQEIEFENL
SPGSVIFRVSLDPHAQAVGILRNHLTQFSPHFKSGSLAVDNADPILKIPFASLASRLTLAELNQLILYR
CESEEKEDGGGCYDIPNWSALKYAGLQGLMSVLAERPKNDLGHPFCNNLRSGDWMIDYVSNRLISRSGT
IAEVGKWLQAMFFYLKQIPRYLIPCYFDAILIGAYTTLLDTAWKQMSFVQNGSTFVKHLSLGSVQLCGV
GKFPSPILPALMDVPYRLNEITKEKEQCCVSLAAGLPHFSSGIFRCWGRDTFIALRGILLITGRYVEA
RNIIILAFAGTLRHGLIPNLLGEGIYARYNCRDAVWWWLQCIQDYCKMVPNGLDILKCPVSRMPTDSDAP
LPAGTLDQPLFEVIQEQAMQKHMQGIQFRERNAGPQIDRNMKDEGFNITAGVDEETGFVYGGNRFNCGTWM
DKMGESDRARNRGIPTPRDGSVEIVGLSKSAVRWLEL SSKNIFPYHEVTVKRHGKAIKVSYDEWNRK
IQDNFEKLFHVSEDPDLNEKHPNLVHKRGIYKDSYGASSPWCDYQLRPNFTIAMVVAPELFTTEKAWKA
LEIAEKLLGPLGMKTLDPDDMVYCGIYDNDNDNYNLAKGFNYHQGPEWLWPIGYFLRAKLYFSRLMG
PETTAKTIVLVKNVLSRHYVHLERSPWKGLPEL TNENAQYCPFCSETQAWSIATILETLIDL
    
```

TRTRPLEQKLISEEDLAANDILDYKDDDDKV

Chromatograms: https://cdn.origene.com/chromatograms/mg3098_g05.zip

Restriction Sites: SgfI-MluI

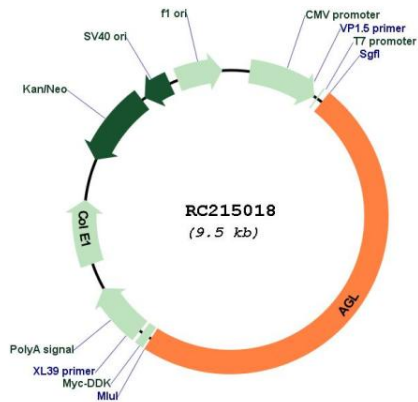
Cloning Scheme:



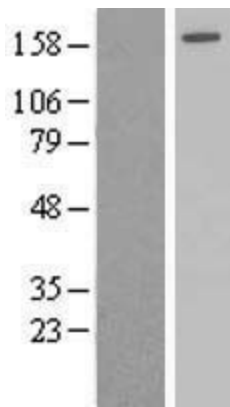
ACCN: NM_000643

ORF Size:	4596 bp
OTI Disclaimer:	The molecular sequence of this clone aligns with the gene accession number as a point of reference only. However, individual transcript sequences of the same gene can differ through naturally occurring variations (e.g. polymorphisms), each with its own valid existence. This clone is substantially in agreement with the reference, but a complete review of all prevailing variants is recommended prior to use. More info
OTI Annotation:	This clone was engineered to express the complete ORF with an expression tag. Expression varies depending on the nature of the gene.
Components:	The ORF clone is ion-exchange column purified and shipped in a 2D barcoded Matrix tube containing 10ug of transfection-ready, dried plasmid DNA (reconstitute with 100 ul of water).
Reconstitution Method:	<ol style="list-style-type: none">1. Centrifuge at 5,000xg for 5min.2. Carefully open the tube and add 100ul of sterile water to dissolve the DNA.3. Close the tube and incubate for 10 minutes at room temperature.4. Briefly vortex the tube and then do a quick spin (less than 5000xg) to concentrate the liquid at the bottom.5. Store the suspended plasmid at -20°C. The DNA is stable for at least one year from date of shipping when stored at -20°C.
RefSeq:	NM_000643.2 , NP_000634.2
RefSeq Size:	7165 bp
RefSeq ORF:	4599 bp
Locus ID:	178
UniProt ID:	P35573
Cytogenetics:	1p21.2
Protein Families:	Druggable Genome
Protein Pathways:	Metabolic pathways, Starch and sucrose metabolism
MW:	174.6 kDa
Gene Summary:	This gene encodes the glycogen debrancher enzyme which is involved in glycogen degradation. This enzyme has two independent catalytic activities which occur at different sites on the protein: a 4-alpha-glucotransferase activity and a amylo-1,6-glucosidase activity. Mutations in this gene are associated with glycogen storage disease although a wide range of enzymatic and clinical variability occurs which may be due to tissue-specific alternative splicing. Alternatively spliced transcripts encoding different isoforms have been described. [provided by RefSeq, Jul 2008]

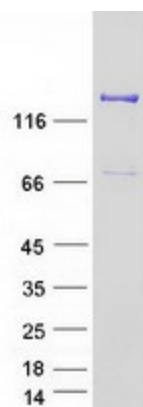
Product images:



Circular map for RC215018



Western blot validation of overexpression lysate (Cat# [LY424972]) using anti-DDK antibody (Cat# [TA50011-100]). Left: Cell lysates from untransfected HEK293T cells; Right: Cell lysates from HEK293T cells transfected with [RC215495] using transfection reagent MegaTran 2.0 (Cat# [TT210002]).



Coomassie blue staining of purified AGL protein (Cat# [TP315018]). The protein was produced from HEK293T cells transfected with AGL cDNA clone (Cat# RC215018) using MegaTran 2.0 (Cat# [TT210002]).