

Product datasheet for **RC215007**

INSM1 (NM_002196) Human Tagged ORF Clone

Product data:

Product Type:	Expression Plasmids
Product Name:	INSM1 (NM_002196) Human Tagged ORF Clone
Tag:	Myc-DDK
Symbol:	INSM1
Synonyms:	IA-1; IA1
Mammalian Cell Selection:	Neomycin
Vector:	pCMV6-Entry (PS100001)
E. coli Selection:	Kanamycin (25 ug/mL)



[View online »](#)

ORF Nucleotide Sequence:

>RC215007 representing NM_002196
 Red=Cloning site Blue=ORF Green=Tags(s)

TTTTGTAATACGACTCACTATAGGGCGGCCGGGAATTCGTCGACTGGATCCGGTACCGAGGAGATCTGCC
 GCC**CGGATCGC**C

ATGCCCCGCGGCTTCTGGTGAAGCGCAGCAAGAAGTCCACGCCGTTTCTACCGGTCGCGGCGGCG
 AGGACGGCGACCGCGCACTGCTGCTCTCGCCAGCTGCGGGGCGCCCGCGCCGAGCCCCGCGCGGAG
 CCGGTTCCCGGGCGCTGCCGCGCGCGCGCCCGGAGCGCGCCATGCAGCGCTCGCGCGCGGCTT
 GCCTGCGCGCTGGGCGCAGCCACCCCGCAGGGCCGCGGGCCGCGCACTTCGGCAACCCGAGGCTG
 CGCACCCCGCGCGCTCTACAGTCCACGCGGCCGTGAGCCGCGAGCAGAGAAGCACAAGTACTTCGA
 ACGCAGCTTCAACTGGGCTCGCCGCTCTCGGCCGAGTCTTCCACGCGCCGCGCGTCTCGGAGGG
 GCGGGCGCGGCGCGAGCGGAGTGGCGGAGGCGGCACCTGCGGCGCGACCCGCTGCTCTTCGCGC
 CCGCGAGCTCAAGATGGGCACGGCTTCTCGGCTGGCGCGAGGCGGCCCGCGGCCCGGGCCCCGCCC
 CCCACTGCCCCCTGCCGCGCCCTGCGGCCCGGGAAAGCGGCCCGCCCCCTACCGCCGCGGAGCCG
 CCCGCCAAGGCAGTCAAGGCCCGGGCGCAAGAAGCCCAAGGCCATCCGCAAGCTGCACTTCGAGGACG
 AGGTGACCACGTGCGCCGTGCTGGGGCTCAAGATCAAGGAGGGCCCGGTGGAGGCGCCGCGGGGCCGCG
 GGGGGGCGCGCGCGGCCGTGGGCGAGTTATCTGCCAGCTGTGCAAGGAGGATACGCCGACCCGTTT
 GCGCTGGCGCAGCACAATGCTCGCGCATCGTGCCTGTGGAGTACCGCTGTCCGAGTGCGCCAAGGTCT
 TCAGTGTCCCGGCCAACCTGGCTCGCACCGCCGCTGGCACAACCGGGCCCGCGCCCGCGCGCCCG
 CGCGCGGAGCCAGAAGCAGCAGCCAGGGCTGAGGCGCGGAGGACCCGGCGGGCGAGCAGCAGCGGGAC
 ACGCCGAGCCCCGGCGGCGTGTCCGAGTGGGCTCCGAGGACGGGCTCTACGAGTGCCATCACTGCGCCA
 AGAAGTTCGCGCCAGGCCTACCTACGCAAGCACCTGCTGGCGCACCACAGGCGCTGCAGGCCAAGGG
 CGCGCCGCTAGCGCCCCCGGCCGAGGACCTATGGCCTTGTAACCCGGGGCCGACGAGAAGGCGCCCCAG
 GAGGCGGCGCGGACGGCGAGGGGGCGCGCTGCTGGGCTGAGTGCCTCGCGCGAGTGCCACCTGTGCC
 CAGTGTGCGGAGAGTCGTTGCGCAGCAAGGGCGCTCAGGAGCGCCACCTGCGCCTGCTGCACGCCGCCA
 GGTGTTCCCTGCAAGTACTGCCCGGCCACCTTCTACAGCTGCGCCGGCCTTACGCGGCACATCAACAAG
 TGCCACCCATCCGAAAACAGACAGGTGATCCTCCTGCAGGTGCCCGTGCGCCCGGCTGC

ACGCGTACGCGGCGGCTCGAGCAGAACTCATCTCAGAAGAGGATCTGGCAGCAAATGATATCTGGATT
 ACAAGGATGACGACGATAAGGTTTAA

Protein Sequence:

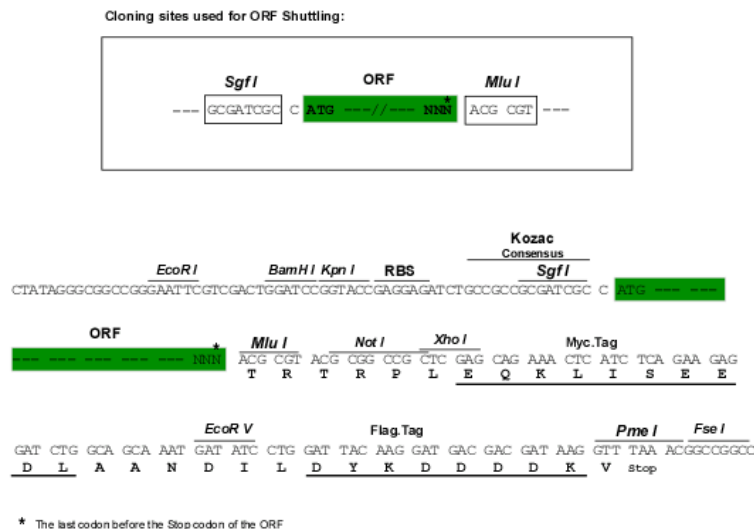
>RC215007 representing NM_002196
 Red=Cloning site Green=Tags(s)

MPRGFLVKRSKKSTPVSYRVGGEDGDRALLSPSCGGARAEPAPSPVPGPLPPPPPAERAHAALAAAL
 ACAPGPQPPQGPRAAHFGNPEAAHPALYSPTRPVSREHEKHKIFERSFNLGSPVSAESFPTPAALLGG
 GGGGASGAGGGTCCGDPLLFAPAELKMGTAFSAGAEARGPGGPPLPPAAALRPPGKRPPPTAAEP
 PAKAVKAPGAKKPKAIRKLHFEDEVTTSPVLGLKIKEGPVEAPRGRAGGAARPLGEFICQLCKEYADPF
 ALAQHKCSRIVRVEYRCPECAKVFSCPANLASHRRWHKPRPAPAAARAPEPEAAARAAREAPGGGSDRD
 TPSPGGVSESGSEDGLYECHCAKKFRRQAYLRKHLAHHQALQAKGAPLAPPAEDLLALYPGPDEKAPQ
 EAAGDGEGAGVLGLSASAEHLCPVCGESFASKGAQERHLRLHAAQVFPCKYCPATFYSSPGLTRHINK
 CHPSNRQVILLQVVPVPAC

TRTRPLE**QKL**ISEEDLAANDILDYKDDDDKV

Restriction Sites:

SgfI-MluI

Cloning Scheme:


ACCN: NM_002196

ORF Size: 1530 bp

OTI Disclaimer: Due to the inherent nature of this plasmid, standard methods to replicate additional amounts of DNA in E. coli are highly likely to result in mutations and/or rearrangements. Therefore, OriGene does not guarantee the capability to replicate this plasmid DNA. Additional amounts of DNA can be purchased from OriGene with batch-specific, full-sequence verification at a reduced cost. Please contact our customer care team at custsupport@origene.com or by calling 301.340.3188 option 3 for pricing and delivery.

The molecular sequence of this clone aligns with the gene accession number as a point of reference only. However, individual transcript sequences of the same gene can differ through naturally occurring variations (e.g. polymorphisms), each with its own valid existence. This clone is substantially in agreement with the reference, but a complete review of all prevailing variants is recommended prior to use. [More info](#)

OTI Annotation: This clone was engineered to express the complete ORF with an expression tag. Expression varies depending on the nature of the gene.

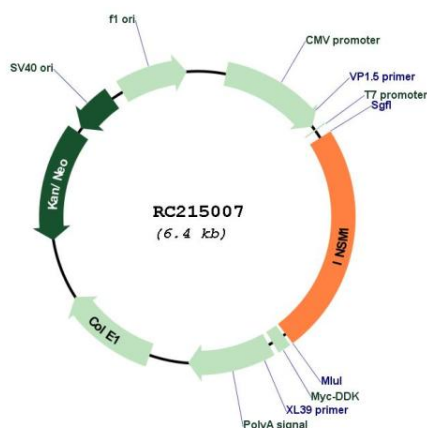
Components: The ORF clone is ion-exchange column purified and shipped in a 2D barcoded Matrix tube containing 10ug of transfection-ready, dried plasmid DNA (reconstitute with 100 ul of water).

Reconstitution Method:

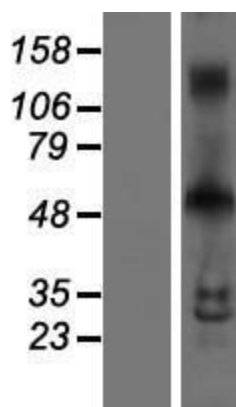
1. Centrifuge at 5,000xg for 5min.
2. Carefully open the tube and add 100ul of sterile water to dissolve the DNA.
3. Close the tube and incubate for 10 minutes at room temperature.
4. Briefly vortex the tube and then do a quick spin (less than 5000xg) to concentrate the liquid at the bottom.
5. Store the suspended plasmid at -20°C. The DNA is stable for at least one year from date of shipping when stored at -20°C.

Note:	Plasmids are not sterile. For experiments where strict sterility is required, filtration with 0.22um filter is required.
RefSeq:	<u>NM_002196.3</u>
RefSeq Size:	2838 bp
RefSeq ORF:	1533 bp
Locus ID:	3642
UniProt ID:	<u>Q01101</u>
Cytogenetics:	20p11.23
MW:	52.7 kDa
Gene Summary:	Insulinoma-associated 1 (INSM1) gene is intronless and encodes a protein containing both a zinc finger DNA-binding domain and a putative prohormone domain. This gene is a sensitive marker for neuroendocrine differentiation of human lung tumors. [provided by RefSeq, Jul 2008]

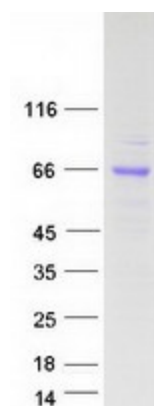
Product images:



Circular map for RC215007



Western blot validation of overexpression lysate (Cat# [LY419479]) using anti-DDK antibody (Cat# [TA50011-100]). Left: Cell lysates from untransfected HEK293T cells; Right: Cell lysates from HEK293T cells transfected with RC215007 using transfection reagent MegaTran 2.0 (Cat# [TT210002]).



Coomassie blue staining of purified INSM1 protein (Cat# [TP315007]). The protein was produced from HEK293T cells transfected with INSM1 cDNA clone (Cat# RC215007) using MegaTran 2.0 (Cat# [TT210002]).