

Product datasheet for RC215005

AMELX (NM_182681) Human Tagged ORF Clone

Product data:

Product Type: Expression Plasmids
Product Name: AMELX (NM_182681) Human Tagged ORF Clone
Tag: Myc-DDK
Symbol: AMELX
Synonyms: AI1E; AIH1; ALGN; AMG; AMGL; AMGX
Mammalian Cell Selection: Neomycin
Vector: pCMV6-Entry (PS100001)
E. coli Selection: Kanamycin (25 ug/mL)
ORF Nucleotide Sequence: >RC215005 representing NM_182681
Red=Cloning site Blue=ORF Green=Tags(s)

TTTGTAAATACGACTCACTATAGGGCGGCCGGAATTCGTCGACTGGATCCGGTACCGAGGAGATCTGCC
GCC**CGATCGCC**

ATGGGGACCTGGATTTTATTTGCCTGCCTCCTGGGAGCAGCTTTTGCCATGCCTGTGCTTACCCCTTGA
AGTGGTACCAGAGCATAAGGCCACCGTACCCTTCTATGGTTACGAGCCCATGGGTGGATGGCTGCACCA
CCAAATCATCCCCGTGTGTCCCAACAGCACCCCGACTCACACCCTGCAGCCTCATCACCACATCCA
GTGGTGCCAGCTCAGCAGCCCGTATCCCCAGCAACCAATGATGCCCGTTCCTGGCCAACACTCCATGA
CTCCAATCCAACACCACCAGCCAAACCTCCCTCCGCCCGCCAGCAGCCCTACCAGCCCCAGCCTGTTCA
GCCACAGCCTCACCAGCCATGCAGCCCCAGCCACCTGTGACCCCATGCAGCCCTGCCGCCACAGCCA
CCTCTGCCTCCGATGTTCCCATGCAGCCCTGCCTCCCATGCTTCTGTACTCTGGAAGCTTGGC
CATCAACAGACAAGACCAAGCGGGAGGAAGTGGAT

ACGCGTACGCGGCCGCTCGAGCAGAACTCATCTCAGAAGAGGATCTGGCAGCAAATGATATCCTGGATT
ACAAGGATGACGACGATAAGGTTTAA

Protein Sequence: >RC215005 representing NM_182681
Red=Cloning site Green=Tags(s)

MGTWILFACLLGAAFAMPVLTPLKQYQSIRPPYPSYGYEPMGGWLHHQIIPVLSQQHPPTHTLQPHHHIP
VVPAQQPVIPQQPMMPVPGQHSMTPIQHHQPNLPPPAQQPYQPVPQPHQPMQPQPPVHPMQPLPPQP
PLPPMFPMQPLPMLPDLTLEAWPSTDKTKREEVD

TRTRPLEQKLISEEDLAANDILDYKDDDDKV

Chromatograms: https://cdn.origene.com/chromatograms/ja1459_e05.zip



[View online »](#)

Restriction Sites: SgfI-MluI

Cloning Scheme:



ACCN: NM_182681

ORF Size: 525 bp

OTI Disclaimer: The molecular sequence of this clone aligns with the gene accession number as a point of reference only. However, individual transcript sequences of the same gene can differ through naturally occurring variations (e.g. polymorphisms), each with its own valid existence. This clone is substantially in agreement with the reference, but a complete review of all prevailing variants is recommended prior to use. [More info](#)

OTI Annotation: This clone was engineered to express the complete ORF with an expression tag. Expression varies depending on the nature of the gene.

Components: The ORF clone is ion-exchange column purified and shipped in a 2D barcoded Matrix tube containing 10ug of transfection-ready, dried plasmid DNA (reconstitute with 100 ul of water).

Reconstitution Method:

1. Centrifuge at 5,000xg for 5min.
2. Carefully open the tube and add 100ul of sterile water to dissolve the DNA.
3. Close the tube and incubate for 10 minutes at room temperature.
4. Briefly vortex the tube and then do a quick spin (less than 5000xg) to concentrate the liquid at the bottom.
5. Store the suspended plasmid at -20°C. The DNA is stable for at least one year from date of shipping when stored at -20°C.

RefSeq: [NM_182681.1](#), [NP_872622.1](#)

RefSeq Size: 745 bp

RefSeq ORF: 528 bp

Locus ID: 265

UniProt ID: [Q99217](#)

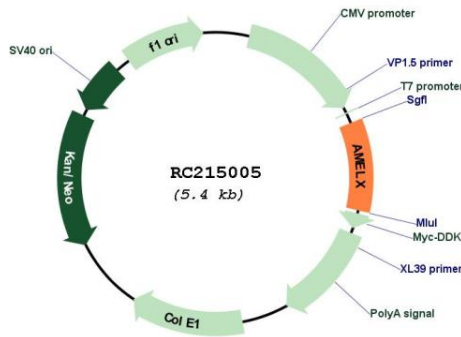
Cytogenetics: Xp22.2

Protein Families: Druggable Genome, Secreted Protein, Transmembrane

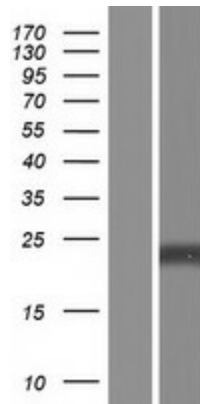
MW: 18.1 kDa

Gene Summary: This gene encodes a member of the amelogenin family of extracellular matrix proteins. Amelogenins are involved in biomineralization during tooth enamel development. Mutations in this gene cause X-linked amelogenesis imperfecta. Alternative splicing results in multiple transcript variants encoding different isoforms. [provided by RefSeq, Jul 2008]

Product images:



Circular map for RC215005



Western blot validation of overexpression lysate (Cat# [LY405446]) using anti-DDK antibody (Cat# [TA50011-100]). Left: Cell lysates from untransfected HEK293T cells; Right: Cell lysates from HEK293T cells transfected with RC215005 using transfection reagent MegaTran 2.0 (Cat# [TT210002]).