

Product datasheet for RC215004

PPP1R3A (NM_002711) Human Tagged ORF Clone

Product data:

Product Type:	Expression Plasmids
Product Name:	PPP1R3A (NM_002711) Human Tagged ORF Clone
Tag:	Myc-DDK
Symbol:	PPP1R3A
Synonyms:	GM; PP1G; PPP1R3
Mammalian Cell Selection:	Neomycin
Vector:	pCMV6-Entry (PS100001)
E. coli Selection:	Kanamycin (25 ug/mL)
ORF Nucleotide Sequence:	>RC215004 ORF sequence Red=Cloning site Blue=ORF Green=Tags(s)

TTTTGTAATACGACTCACTATAGGGCGGCCGGAATTCGTCGACTGGATCCGGTACCGAGGAGATCTGCC
GCC**CGATCGCC**

ATGGAGCCTTCTGAAGTACCTAGTCAGATTAGCAAAGATAATTTTTAGAAAGTTCCTAATTTATCTGACT
CTCTTTGTGAAGATGAAGAAGTTACTTTCCAACCTGGTTTCTCCCCTCAACCAAGTAGACGAGGTTCTGA
TTCTTCTGAAGACATACCTGGATACCCCATCTTCAGGTAAGAGATTTTCATTGCTGATTCCTTT
GGATTCATCTTGTGCTGTTAAAGAATTTGATTGCTGGGAATTACCGAGTGCTTCAACCACTTTTGACT
TAGGGACGGACATTTTCCACACAGAAGAATATGTTTTAGCCCACTGTTTGACTTGCCTTCTCAAAGA
AGATCTTATGCAACAACCCAAATACAGAAAGCAATACTGGAGTCAACTGAGTCTTCTTGGGTCTACA
AGTATCAAGGGTATTATTCGAGTTTTGAATGTTTTCTTTGAGAAGTTAGTATATGTAAGAATGCTTTAG
ATGACTGGCAGACACATTATGACATTTAGCAGAAATATGTTTCTAATTCATGTGATGGTAAACTGACCA
GTTCTCCTTAAAGATTGTATTGGTTCCTCTTATCAAAAAGATGGCAGTAAAGTTGAGTTTTGTATACGT
TATGAACTTCTGTTGGTACATTTTGGTCAAATAAATGGCACAATAATACATTCATTTGTCAAAGA
AAGAACAAGAGCCGGAGCCTGAAAACCATGAAAAGAAGTTCTAACAGACAAAATAAAGGCTGCTTAA
GGTAAATCAAGTAAAGAAGAATCATCAGTAACATCAGAAGAAAATACTTTGAGAAATCAAAGAATACA
GATACCTATATCCCAACATCATTGTTCTCATGAGGACAAGGAAGATTTGGAAGCCAGTAAATCGAAATG
TAAAAGATGTAACAGGGAACATGATGAACATAATGAAAAGAATTAGAGTTGATGATAAATCAACACTT
AATAAGAACCAGAAGTACTGCTTCCAGAGATGAAAGGAATACATTTTCAACAGATCCAGTCAATTTTCCA
AATAAAGCAGAGGGTTAGAGAAGAAGCAAATCCATGGTAAATATGTAAGTACTGACTTGTCCAAAGGCTCTC
TGTCTCAAGTTCATCAGCAGAAAGCTCCGTAAGGGAGATTTTTACTGCAATGAAAAATTCCTCAGG
AGATGACTGTACACATCAACCTTCAAGGAAACTACTTCAAATATGGGAGAAATCAAGCCATCATTGGGA
GATACTAGTAGTGAAGTACTGCAATACATACTGGCAGCAAAGAAGTCTGGATGATAATGCTAATC
CAGCCATGGCAATGGCACAATGCAAAATACCTTGGCCCTCTTCAGATCAACTAATGGCAGGAAACCTTAA
TAAAAACATGAAGGAGGAGCTAAAAAATTGAAGTAAAGATTTGGGATGTTTACGAAGAGATTTCCAT

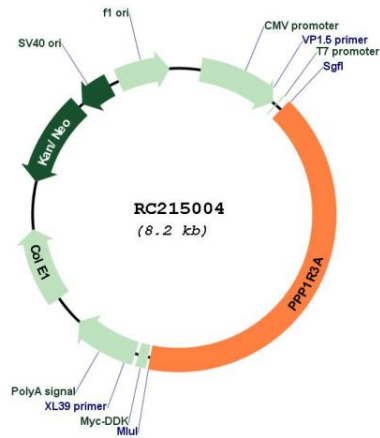


TCAGATACGTCGGCATGTCTCAAAGAATCAACAGAAGAAGGATCTTCTAAGGAAGATTATTATGGCAATG
GTAAGGATGATGAAGAACAAAGAATATATTTAGGTGTTAATGAAAAACAAAGAAAAATTTCCAACAAT
CTTACATGACCAAGAAAGGAAGATGGGTAAACCCTAAAAAAGTGTGGCAGGGATTGGAGCTAGTAACAGA
GACCTGGCTACTCTGCTGAGCGAACATACCGCAATCCCCACCCGGGCAATCACAGCAGATGTGTCTCATT
CACCAAGGACAAATTTAAGTTGGGAAGAAGCTGTGTTAACCCAGAGCATCATCTTTGACTAGTGAAGG
CAGCGCTTTAGGAGGGATAACTGGTCAAGTTTGTTCATCAAGAACTGGAAATGTTTTGAGGAATGATTAT
CTTTTCCAAGTTGAAGAAAAATCAGGTGGGATTAATTCTGAAGATCAGGATAATAGCCACAGCATAAAC
AAAGTTGGAATGTTCTGGAAAGTCAGGGAAAAATCAAGAGAGAATAAGACAACAT AACAGAGCATATCAA
AGGACAAACAGATTGTGAAGACGTGTGGGAAAAAGAGATAATACGAGGAGTTTGAAGCTACTACAGAA
GAATTGTTACCTGCCAAGAAACAGTGTGCTGTGAACTGTCTTCTCTAGCTGATCATGGCATTACTGAGA
AAGCAGAAGCTGGTACAGCCTATATAATTAAGACAACATCAGAAAGTACTCCAGAAAGCATGTCTGCTAG
AGAAAAAGCAATAATTGCTAAGCTACCTCAAGAGACAGCACGAAGTGACAGGCCCATCGAGGTAAGGAA
ACAGCGTTTGATCCACATGAAGGGAGAATGATGATTCACATTATACCCTTTGTCAACGAGATACAGTAG
GTGTAATCTATGACAATGATTTTGAAGAAGTACGTTTAGGTATTTGTAATGTACGTGTAGATGAAAT
GGAGAAGGAAGAAACCATGTCTATGTACAATCCTAGGAAGACACATGACAGGGAGAAATGTGGCACTGGA
AATATAACATCTGTGGAAGAATCCTCATGGGTCATTACAGAATATCAAAAAGCAACTTCAAAACTGGATT
TACAGTTGGGAATGTTACCAACAGACAAAAGTATTTTCAGAAAACAGAGATCATAGGCAGGTTCAAGA
ATTATCAAGAAAACAGACTCGGATGCCATTGTGCATTCTGCTTTAACTCAGACACTAATAGAGCTCCT
CAGAATAGCTCTCCTTTTTCCAACATCATACTGAAATTTAGTGTCAACTAATGAGCAGGCAATTGCTG
TAGAGAATGCAGTTACTACCATGGCTAGCCAACCTATTTCTACGAAATCAGAAAAATTTGTAATTAAC
AAGAGAAATCCAGGGATTGAGAAGCACCTTATCCTGAGTCTAACTGAAGAAGTTCCAGAAGTTCA
GGAATAGTGACATCAGGTAGTAGAAAAGAAAGATGCATAGGCCAGATTTTCCAACAGAAAGATAGTG
TGGAAAAATCTTAGGGCAATGATTTTAAATCAACAACTCTTGAGAATATGGAAGAAGCAAGGCATGA
AAATGAAGGATTAGTAAGCTCTGGCAATCACTATACACTTCAGGTGAAAAGGAATCTGACAGCTCTGCT
TCTACTAGTCTTCTGTTGAGGAAAGTCAAGCTCAAGGCAACGAATCTTTGTTTTCAAAATATACCAACT
CTAAAATACCTTATTTCTTTTCTGATATTTCTTATAACTGTCTACCATTATGACTTAATGATTGG
CTTGACATTCTACGTTTTGTCATTGTCCTGGCTATCCTGGGAAGAGGGTAGACAAAAAGAGTCTGTCAA
AAGAAG

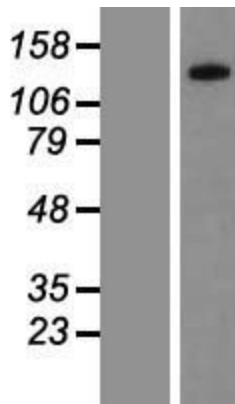
ACGCGTACGCGGCCGCTCGAGCAGAACTCATCTCAGAAGAGGATCTGGCAGCAATGATATCCTGGATT
ACAAGGATGACGACGATAAGGTTTAA

OTI Disclaimer:	The molecular sequence of this clone aligns with the gene accession number as a point of reference only. However, individual transcript sequences of the same gene can differ through naturally occurring variations (e.g. polymorphisms), each with its own valid existence. This clone is substantially in agreement with the reference, but a complete review of all prevailing variants is recommended prior to use. More info
OTI Annotation:	This clone was engineered to express the complete ORF with an expression tag. Expression varies depending on the nature of the gene.
Components:	The ORF clone is ion-exchange column purified and shipped in a 2D barcoded Matrix tube containing 10ug of transfection-ready, dried plasmid DNA (reconstitute with 100 ul of water).
Reconstitution Method:	<ol style="list-style-type: none">1. Centrifuge at 5,000xg for 5min.2. Carefully open the tube and add 100ul of sterile water to dissolve the DNA.3. Close the tube and incubate for 10 minutes at room temperature.4. Briefly vortex the tube and then do a quick spin (less than 5000xg) to concentrate the liquid at the bottom.5. Store the suspended plasmid at -20°C. The DNA is stable for at least one year from date of shipping when stored at -20°C.
RefSeq:	NM_002711.2 , NP_002702.1
RefSeq Size:	4296 bp
RefSeq ORF:	3369 bp
Locus ID:	5506
UniProt ID:	Q16821
Cytogenetics:	7q31.1
Protein Families:	Druggable Genome, Phosphatase, Transmembrane
Protein Pathways:	Insulin signaling pathway
MW:	125.8 kDa
Gene Summary:	The glycogen-associated form of protein phosphatase-1 (PP1) derived from skeletal muscle is a heterodimer composed of a 37-kD catalytic subunit and a 124-kD targeting and regulatory subunit. This gene encodes the regulatory subunit which binds to muscle glycogen with high affinity, thereby enhancing dephosphorylation of glycogen-bound substrates for PP1 such as glycogen synthase and glycogen phosphorylase kinase. [provided by RefSeq, Jul 2008]

Product images:



Circular map for RC215004



Western blot validation of overexpression lysate (Cat# [LY419154]) using anti-DDK antibody (Cat# [TA50011-100]). Left: Cell lysates from untransfected HEK293T cells; Right: Cell lysates from HEK293T cells transfected with RC215004 using transfection reagent MegaTran 2.0 (Cat# [TT210002]).