

## Product datasheet for **RC214998**

### SLC13A2 (NM\_003984) Human Tagged ORF Clone

#### Product data:

Product Type:	Expression Plasmids
Product Name:	SLC13A2 (NM_003984) Human Tagged ORF Clone
Tag:	Myc-DDK
Symbol:	SLC13A2
Synonyms:	NaCT; NaDC-1; NADC1; SDCT1
Mammalian Cell Selection:	Neomycin
Vector:	pCMV6-Entry (PS100001)
E. coli Selection:	Kanamycin (25 ug/mL)



[View online »](#)

**ORF Nucleotide Sequence:**

>RC214998 ORF sequence  
 Red=Cloning site Blue=ORF Green=Tags(s)

TTTTGTAATACGACTCACTATAGGGCGGCCGGAATTCGTCGACTGGATCCGGTACCGAGGAGATCTGCC  
 GCC**CGGATCGCC**

ATGGCCACCTGCTGGCAGGCCCTGTGGCCTATCGCTCCTACCTGATCGTGTTCCTCGTGCCATTCTCC  
 TGCTGCCTCTGCCATCCTCGTCCCAAGTAAGGAGGCCTACTGCGGTATGCCATCATCCTCATGGCGCT  
 CTTCTGGTGCCTGAGGCCCTGCCCTGGCCGTAAGTCCCTCTTCCCTTAATCCTGTTCCCTATGATG  
 GGCATCGTGGATGCCTCTGAGGTTGCCGTGAGTATCTTAAGGACTCCAACCTCCTGTTCTCGGGGGC  
 TGCTGGTGGCCATCGCGGTGGAACACTGGAACCTGCATAAACGCATCGCCCTCCGTGCTCCTCATCGT  
 TGGGGTGGCCCTGCCCGCTAATCCTGGGCTTCATGCTGGTACGCGCTTCTGTCCATGTGGATCAGC  
 AACACGGCCACCTCAGCCATGATGGTGGCCATCGCACATGCCGTCTGGACCAGTGCACAGCTCGCAAG  
 CCAGCAGCAACGTCGAGGAGGGCAGCAACAACCCACCTTCGAGCTCCAGGAACCAAGTCCCGAAGGA  
 GGTGACCAAGCTTGATAATGGGCAGGCCCTCCCTGTCAGTCTGCCTCTTCGGAGGGGAGGGCACATCTC  
 AGCCAGAAGCATCTCACCTCACCCAGTGCATGAGCCTGTGCGTGTGCTACTCCGCCAGCATCGGGGGCA  
 TCGCCACGCTGACTGGCACCACCCAACTGGTGTGCAAGGCCAGATCAACTCGCTCTTCCCCAAAA  
 CGGCAACGTGGTGAATTCGCTCCTGGTTCAGCTTCGCCTTCCCACCATGGTCACTTGTCTGCTGCTG  
 GCCTGGTGTGGCTGCAGATCCTCTTCTGGGCTTCAACTCCGGAAGAACTTTGGCATTGGGAAAAAGA  
 TGCAGGAGCAACAGCAGGCAGCCTACTGCGTCATCCAGACCGAGCACAGGCTGCTGGGCCCATGACCTT  
 TTTCTTGGCTGGGCAATTTGGCTTTTCCCAATGCCAAGGGGGAGAGCATGGTGTCCGATGGGACAGTGG  
 CCATCTTCATCGGCATAATTATGTTTCATACATACCCTCCAAGTTCAGGGCTGACCCAGGACCCAGAAAA  
 CCCAGGGAAGCTGAAGGCCCTCTTGGCTCCTCGACTGGAAGACGGTGAACCAGAAGATGCCGTGGAAT  
 ATCGTGTATTGCTGGTGGTGGCTATGCCCTGGCCAAGGGCAGTGGGATCGGGCCTGTGAGAGTGGC  
 TGGGAAACAAGCTGACCCACTGCAGAGTGTGCCAGCTCCAGCCATTGCCATCATCCTCTCCCTCCTGGT  
 GGCCACCTTACCAGTGCCTAGCAACGTGGCCACCCTACGATCTTCTGCCATCCTAGCCTCCATG  
 GCCAGGCATCTGCCTCACCTCTCTACGTCATGCTCCCTGCACTCTGGCCACCTCCCTGGCCTTCA  
 TGTTGCCTGTGGCCACCCGCCAATGCCATCGTCTTCTTTCGGGGACCTCAAAGTGTGGATATGGC  
 CCGGGCAGGATTCCTCCTCAACATATTGGAGTCTGATCATCGCACTGGCCATCAACAGCTGGGGCATC  
 CCCCTTTCAGCCTGCACTCTTCCCTCCTGGGCACAGTCCAACACCACAGCCAGTGCCTGCCAAGCC  
 TGCCAACACCACACCAAGCCCC

**ACGCGT**ACGCGGCCGCTCGAGCAGAACTCATCTCAGAAGAGGATCTGGCAGCAAATGATATCCTGGATT  
 ACAAGGATGACGACGATAAGGTTTAA

**Protein Sequence:**

>RC214998 protein sequence  
 Red=Cloning site Green=Tags(s)

MATCWQALWAYRSYLIVFFVPIILLPLPILVPSKEAYCAYAIILMALFWCTEALPLAVTALFPLILFPM  
 GIVDASEVAVEYLKDSNLLFFGGLLVAIAVEHWNLHKRIALRVLLIVGVRPAPLILGFMLVTAFLSMWIS  
 NTATSAMMVPPIAHAVLDQLHSSQASSNVEEGSNPTFELQEPSPQKEVTKLDNGQALPVTSASSEGRAHL  
 SQKHLHLTQCMSLVCYSASIGGIATLTGTAPNLVLQGGINSLFPQNGVNVNFASWFSFAFPTMVI  
 AWLWLQILFLGFNFRKNGIGEKMQEQQAAYCVIQTEHRLGPMTFAEKAISILFVILVLLWFTREP  
 FLGWGNLAFPNAGESMVS DGTVAIFIGIIMFIIIPSKFPLTQDPENPGKLGKAPLGLLDWKT  
 VNVNQPMPWNIVLLLGGYALAKGSERSGLSEWLGNKLTPLQSVPAIAIILSLLVATFTECTSNVAT  
 TIFLPIILASMAQAICLHPLYVMLPCTLATSLAFMLPVATPPNAIVFSFGDLKVLDMARAGFLLN  
 IIGVLIILALAINSWGIPFLSLHSFSPWAQSNTTAQCLPSLANTTTPSP

**TRTRPLEQKLI**SEEDLAANDILDYKDDDDKV

**Chromatograms:**

[https://cdn.origene.com/chromatograms/mk6451\\_e01.zip](https://cdn.origene.com/chromatograms/mk6451_e01.zip)

Restriction Sites: SgfI-MluI

Cloning Scheme:



ACCN: NM\_003984

ORF Size: 1776 bp

OTI Disclaimer: The molecular sequence of this clone aligns with the gene accession number as a point of reference only. However, individual transcript sequences of the same gene can differ through naturally occurring variations (e.g. polymorphisms), each with its own valid existence. This clone is substantially in agreement with the reference, but a complete review of all prevailing variants is recommended prior to use. [More info](#)

OTI Annotation: This clone was engineered to express the complete ORF with an expression tag. Expression varies depending on the nature of the gene.

Components: The ORF clone is ion-exchange column purified and shipped in a 2D barcoded Matrix tube containing 10ug of transfection-ready, dried plasmid DNA (reconstitute with 100 ul of water).

- Reconstitution Method:
1. Centrifuge at 5,000xg for 5min.
  2. Carefully open the tube and add 100ul of sterile water to dissolve the DNA.
  3. Close the tube and incubate for 10 minutes at room temperature.
  4. Briefly vortex the tube and then do a quick spin (less than 5000xg) to concentrate the liquid at the bottom.
  5. Store the suspended plasmid at -20°C. The DNA is stable for at least one year from date of shipping when stored at -20°C.

RefSeq: [NM\\_003984.4](#)

RefSeq Size: 2384 bp

RefSeq ORF: 1779 bp

Locus ID: 9058

UniProt ID: [Q13183](#)

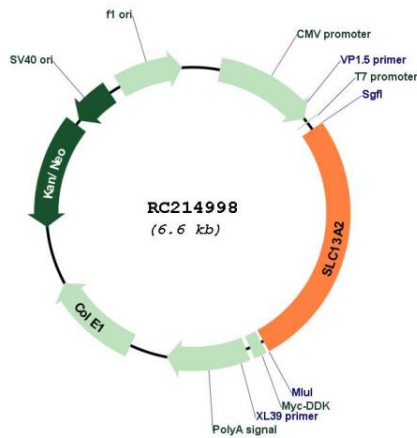
Cytogenetics: 17q11.2

Protein Families: Transmembrane

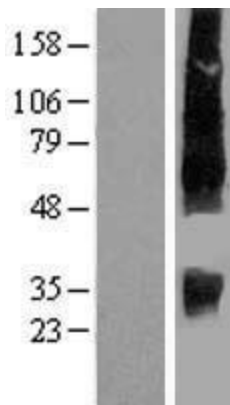
MW: 64.4 kDa

Gene Summary: The protein encoded by this gene is a sodium-coupled citrate transporter that is regulated by the chaperone activity of cyclophilin b. The encoded protein may play a role in the formation of kidney stones. [provided by RefSeq, Oct 2016]

**Product images:**



Circular map for RC214998



Western blot validation of overexpression lysate (Cat# [LY418310]) using anti-DDK antibody (Cat# [TA50011-100]). Left: Cell lysates from untransfected HEK293T cells; Right: Cell lysates from HEK293T cells transfected with RC214998 using transfection reagent MegaTran 2.0 (Cat# [TT210002]).