

Product datasheet for RC214995

PPP1R11 (NM_021959) Human Tagged ORF Clone

Product data:

Product Type: Expression Plasmids
Product Name: PPP1R11 (NM_021959) Human Tagged ORF Clone
Tag: Myc-DDK
Symbol: PPP1R11
Synonyms: CFAP255; HCG-V; HCGV; IPP3; TCTE5; TCTEX5
Mammalian Cell Selection: Neomycin
Vector: pCMV6-Entry (PS100001)
E. coli Selection: Kanamycin (25 ug/mL)
ORF Nucleotide Sequence: >RC214995 representing NM_021959
 Red=Cloning site Blue=ORF Green=Tags(s)

TTTTGTAATACGACTCACTATAGGGCGGCCGGAATTCGTCGACTGGATCCGGTACCGAGGAGATCTGCC
 GCCCGCATCGCC

ATGGCCGAGGCGAGGGGCTGGGCTGAGCGAGACCGTCACTGAGACAACGGTTACCGTGACAACCGAGCCCG
 AGAACCGGAGCCTTACCATCAAACCTCGGAAACGGAAGCCAGAGAAAAAGGTAGAATGGACAAGTGACAC
 TGTGGACAATGAACACATGGGCCGCCGCTCATCAAATGCTGTATTTATGAGAAACCTCGGGCCTTT
 GCGGAGAGCTCCACGAAAGTGATGAGGAGGAAGAAGAGGGCTGTGGTCATACACACTGTGTACGTGGCC
 ACCGCAAAGGACGGCGTCGTGCAACCCTAGGACCGACCCCAACCCCTCCCCAGCCTCCTGACCCTTC
 CCAGCCCCCTCCAGGGCCAATGCAGCAC

ACGCGTACGCGGCCGCTCGAGCAGAACTCATCTCAGAAGAGGATCTGGCAGCAAATGATATCCTGGATT
 ACAAGGATGACGACGATAAGGTTTAA

Protein Sequence: >RC214995 representing NM_021959
 Red=Cloning site Green=Tags(s)
 MAEAGAGLSETVTETTVTVTTEPENRSLTIKLRKRKPEKKVEWTSDDTVDNEHMGRRSSKCCCIYEKPRAF
 GESSTESDEEEEGCGHTHCVRGHRKGRRRATLGPTPTTPPQPPDPSQPPPGPMQH

TRTRPLEQKLISEEDLAANDILDYKDDDDKV

Chromatograms: https://cdn.origene.com/chromatograms/mk6036_c08.zip

Restriction Sites: SgfI-MluI



[View online »](#)

Cloning Scheme:


ACCN: NM_021959

ORF Size: 378 bp

OTI Disclaimer: The molecular sequence of this clone aligns with the gene accession number as a point of reference only. However, individual transcript sequences of the same gene can differ through naturally occurring variations (e.g. polymorphisms), each with its own valid existence. This clone is substantially in agreement with the reference, but a complete review of all prevailing variants is recommended prior to use. [More info](#)

OTI Annotation: This clone was engineered to express the complete ORF with an expression tag. Expression varies depending on the nature of the gene.

Components: The ORF clone is ion-exchange column purified and shipped in a 2D barcoded Matrix tube containing 10ug of transfection-ready, dried plasmid DNA (reconstitute with 100 ul of water).

Reconstitution Method:

1. Centrifuge at 5,000xg for 5min.
2. Carefully open the tube and add 100ul of sterile water to dissolve the DNA.
3. Close the tube and incubate for 10 minutes at room temperature.
4. Briefly vortex the tube and then do a quick spin (less than 5000xg) to concentrate the liquid at the bottom.
5. Store the suspended plasmid at -20°C. The DNA is stable for at least one year from date of shipping when stored at -20°C.

Note: Plasmids are not sterile. For experiments where strict sterility is required, filtration with 0.22um filter is required.

RefSeq: [NM_021959.3](#)

RefSeq Size: 1620 bp

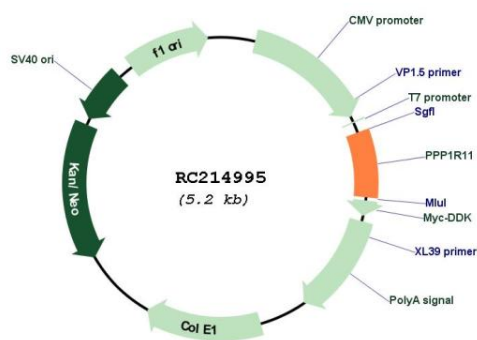
RefSeq ORF: 381 bp

Locus ID: 6992
 UniProt ID: [O60927](#)
 Cytogenetics: 6p22.1

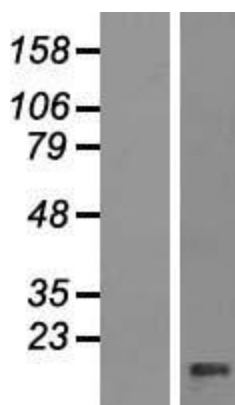
Protein Families: Druggable Genome
 MW: 13.8 kDa

Gene Summary: This gene encodes a specific inhibitor of protein phosphatase-1 (PP1) with a differential sensitivity toward the metal-independent and metal-dependent forms of PP1. The gene is located within the major histocompatibility complex class I region on chromosome 6. [provided by RefSeq, Jul 2008]

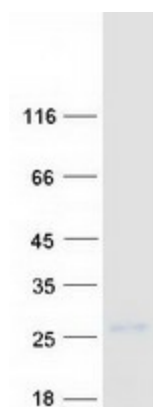
Product images:



Circular map for RC214995



Western blot validation of overexpression lysate (Cat# [LY411854]) using anti-DDK antibody (Cat# [TA50011-100]). Left: Cell lysates from untransfected HEK293T cells; Right: Cell lysates from HEK293T cells transfected with RC214995 using transfection reagent MegaTran 2.0 (Cat# [TT210002]).



Coomassie blue staining of purified PPP1R11 protein (Cat# [TP314995]). The protein was produced from HEK293T cells transfected with PPP1R11 cDNA clone (Cat# RC214995) using MegaTran 2.0 (Cat# [TT210002]).