

Product datasheet for RC214993

PERK (EIF2AK3) (NM_004836) Human Tagged ORF Clone

Product data:

Product Type:	Expression Plasmids
Product Name:	PERK (EIF2AK3) (NM_004836) Human Tagged ORF Clone
Tag:	Myc-DDK
Symbol:	PERK
Synonyms:	PEK; PERK; WRS
Mammalian Cell Selection:	Neomycin
Vector:	pCMV6-Entry (PS100001)
E. coli Selection:	Kanamycin (25 ug/mL)
ORF Nucleotide Sequence:	>RC214993 representing NM_004836 Red=Cloning site Blue=ORF Green=Tags(s)

TTTTGTAATACGACTCACTATAGGGCGGCCGGAATTCGTCGACTGGATCCGGTACCGAGGAGATCTGCC
GCC**CGATCGCC**

ATGGAGCGCGCCATCAGCCCGGGGCTGCTGGTACGGGCGCTGCTGCTGCTGCTGCTGCTGCTGGGGCTCG
CGGCAAGGACGGTGGCCGCGGGGCGGCCGCTGGCCTCCAGCGCCGACGGCGGAGGCGGCTTCGGCT
CGGGGCGGCCGCTGCTCCACCTCAGCGACGCGAGTACCGGCGGGGCGGCCGCTGGCTGCGGCCGAGGTG
ACTGTGGAGGACGCTGAGGCGCTGCCGGCAGCCGCGGGAGAGCAGGAGCCTCGGGTCCGGAACAGACG
ATGAGACAGAGTTGCGACCGCGCGCAGGTCATTAGTAATTATCAGCACTTTAGATGGGAGAATTGCTGC
CTTGATCCTGAAAATCATGGTAAAAAGCAGTGGGATTTGGATGTGGATCCGGTTCCTTGGTGTATCC
AGCCTTAGCAAACAGAGGTATTTGGGAATAAGATGATCATTCCCTCCCTGGATGGAGCCCTCTCCAGT
GGGACCGAGACCGTAAAAGCATGAAAACAGTTCCTTTACAGTTGAATCACTTCTTGAATCTTTATAA
ATTTGGAGATGATGTTGTTTTGGTTGGAGGAAAATCTCTGACTACATATGGACTCAGTGCATATAGTGA
AAGGTGAGGTATATCTGTTACAGCTCTGGTTGTCGCAATGGGATAGTGACGAAATGGAACAAGAGGAAG
ACATCTGCTTCTACAGCGTACCCAAAAACTGTTAGAGCTGTCGGACCTCGCAGTGGCAATGAGAAGTG
GAATTTAGTGTGGCCACTTTGAACCTCGGTATATCCAGACATGAAAACGAGAGCCGGATTTATTGAA
AGCACCTTTAAGCCCAATGAGAACACAGAAGAGTCTAAAATTTTCAGATGTGGAAGAACAGGAAGCTG
CCATAATGGACATAGTGATAAAGTTTCGGTTGCTGACTGGAAAGTTATGGCATTAGTAAGAAGGGAGG
ACATCTGGAATGGGAGTACCAGTTTTGACTCCAATTGCATCTGCCTGGTTACTTAAGGATGGGAAAGTC
ATTCATCAGTCTTTTATGATACAAGTTATACATCTAATGATGATGTTTTAGAAGATGAAGAAGACA
TTGTAGAAGCTGCCAGAGGAGCCACAGAAAACAGTGTACTTGGGAATGTATAGAGGCCAGCTGTATCT
GCAGTCATCAGTCAGAAATTTAGAAAAGTTTCTTCAAGTCCCAAGGCTTTGGAATCTGCTACTAATGAA
AACGCAATTTCTTTACCAACAATCAAATGAAAACCTTAATTCATTCTCTCCAGAACTCCTGTCT
TGGTAGGATCTGATGAATTTGACAAATGTCTCAGTAATGATAAGTTTTCTCATGAAGAATATAGTAATGG
TGCACTTCAATCTGCAATCCATATGATAATGGTTATTATCTACCATACTACAAGAGGGAGAGGAAC



AAACGAAGCACACAGATTACAGTCAGATTCCCTCGACAACCCACATTACAACAAGAATATCCGCAAAAAGG
 ATCCTGTTCTTCTTTTACTGTTGAAAGAAATAGTTGCAACGATTTTGTGGTATCATAGCAACAAC
 GTTTATTGTGCGCAGGCTTTTCCATCCTCATCCTCACAGGCAAAGGAAGGAGTCTGAAACTCAGTGTCAA
 ACTGAAAATAAATATGATTCTGTAAAGTGGTGAAGCCAATGACAGTAGCTGGAATGACATAAAAACTCTG
 GATATATACAGATATCTAAGTATTTGAGCCAATCAATGCCTGGGACGTGGTGGCTTTGGAGTTGT
 TTTTGAAGCTAAAAACAAAGTAGATGACTGCAATTATGCTATCAAGAGGATCCGCTCCCCAATAGGGAA
 TTGGCTCGGAAAAGGTAAATGCGAGAAGTTAAAGCCTTAGCCAAGCTTGAACACCCGGCATTGTTAGAT
 ATTTCAATGCCTGGCTCGAAGCACCACCAGAGAAGTGGCAAGAAAAGATGGATGAAATTTGGCTGAAAGA
 TGAAGCACAGACTGGCCACTCAGCTCTCTAGCCCAATGGATGCACCATCAGTTAAAATACGCAGAATG
 GATCCTTTCTCTACAAAAGAACATATTGAAATCATAGCTCCTTACCACAAAAGAAGCAGGCTTTTTTCAG
 TAGGGATTTCTGTGACCAGACAAGTTCATCTGAGAGCCAGTTCTCACCCTGGAATTCTCAGGAATGGA
 CCATGAGGACATCAGTGAGTCAAGTGCAGCATACAACCTCCAGGACAGTTGCCTTACAGACTGTGAT
 GTGGAAGATGGGACTATGGATGGCAATGATGAGGGGACTCCTTTGAACTTTGCCTTCTGAAGCTTCTC
 CTTATGTAAGGTCAAGGGAGAGAACCTCCTCTTCAATAGTATTTGAAGATTCTGGCTGTGATAATGCTTC
 CAGTAAAGAAGAGCCGAAAACCTCGATTGCATATTGGCAACCATTGTGCTAATAAACTAACTGCTTTC
 AAGCCCACAGTAGCAAACTCTTCTCTGAAGCTACATTGTCTATTTCTCTCCAAGACCAACCCTTTAA
 GTTTAGATCTCACTAAAAACACCACAGAAAACTCCAGCCAGTTCCACAAAGGTGTATCTTTACATTCA
 AATGCAGCTGTGCAGAAAAGAAAACCTCAAAGACTGGATGAATGGACGATGTACCATAGAGGAGAGAGAG
 AGGAGCGTGTGTCTGCACATCTTCTGCAGATCGCAGAGGCAGTGGAGTTTCTTACAGTAAAGGACTGA
 TGCACAGGGACCTCAAGCCATCCAACATATTCTTTACAATGGATGATGTGGTCAAGGTTGGAGACTTTGG
 GTTAGTGACTGCAATGGACCAGGATGAGGAAGAGCAGACGGTTCTGACCCCAATGCCAGCTTATGCCAGA
 CACACAGGACAAGTAGGGACCAAAGTGTATAGGCCAGAGCAGATTGGAACAGCTATTCTCATA
 AAGTGGACATCTTTCTTTAGGCCTGATTCTATTTGAATTGCTGTATCCATTGACTCAGACTCAGATGGAGAG
 AGTCAGGACCTTAACTGATGTAAGAAATCTCAAATTTCCACCATTATTTACTCAGAAATATCCTTTGAG
 TACGTGATGGTTCAAGACATGCTCTCTCCATCCCCATGGAACGACCTGAAGCTATAAACATCATTGAAA
 ATGCTGTATTTGAGGACTTGACTTTCCAGGAAAAACAGTGCTCAGACAGAGGTCTCGCTCCTTGAGTTC
 ATCGGGAACAAAACATCAAGACAGTCCAACAACCTCCATAGCCCTTTGCCAAGCAAT

ACGCGTACGCGGCCGCTCGAGCAGAACTCATCTCAGAAGAGGATCTGGCAGCAATGATATCCTGGATT
 ACAAGGATGACGACGATAAGGTTTAA

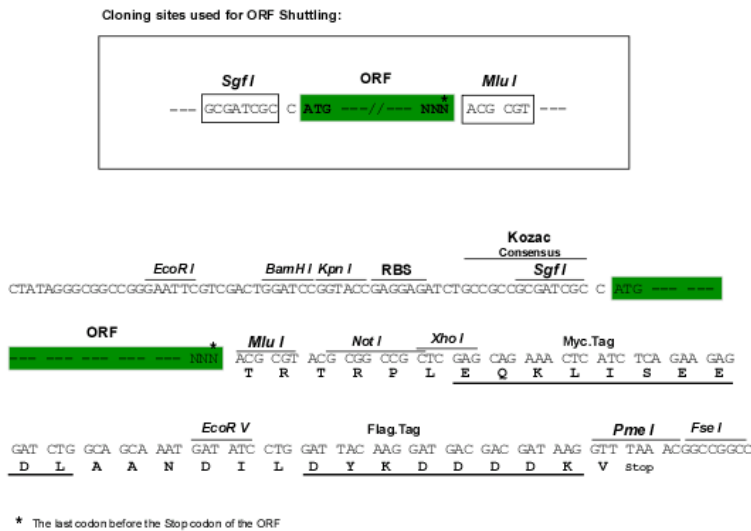
Protein Sequence:

>RC214993 representing NM_004836
 Red=Cloning site Green=Tags(s)

MERAISPGLLVRAALLLLLLLGLAARTVAAGRARGLPAPTAEAAFGLGAAAAPTSATRVPAAGAVAAAEV
 TVEDAEALPAAAGEQEPRGPEPDETELPRGRSLVIIISTLDGRIAALDPENHGKQWDLVDVSGSLVSS
 SLKPEVFGNKMIIPSLDGALFQWDRDRESMETVPFTVESLLESSYKFGDDVVLVGGKSLTTYGLSAYSG
 KVERYICSALGCRQWSDMEQEEDILLQRTQKTVRAVGPARGNEKWNFSVGHFELRYIPDMETRAGFIE
 STFKNPENTEEKIISDVEEQEAAIMDIVIKVSVADWKVMAFSKKGHLEWEYQFCTPIASAWLLKDGKV
 IPIISLFDTSYTSNDDVLEDEEDIVEAARGATENSYYLGMRYGQLYLQSSVRISEKFPSSPKALESVTNE
 NAIIPLPTIKWKPLIHSPSRTPVLVGSDEFDKCLSNDFKSHEEYSNGALSILQYPYDNGYYLPYYKRERN
 KRSTQITVRFLDNPHYNKIRKDPVLLHWWKEIVATILFCIIATTFIVRRLFPHPHRQRKESETQCQ
 TENKYDSVSGEANDSSWNDIKNSGYISRYLDFEPIQCLGRGGFVVFEAKNKVDDCNYAIAKIRLNPNE
 LAREKVMREVKALAKLEHPGIVRYFNAWLEAPPEKWQEKMDIWLKDESTDWPLSSPSPMDAPSVKIRRM
 DPFSTKEHIEIIAPSPQRSRSFVSGISCDQTSSESQFSPLEFSGMDHEDISESVDAAAYNLQDSCLTDCD
 VEDGTMGDNDGHSFELCPSEASPYVRSRERTSSSIVFEDSGCDNASSKEEPKTNRLHIGNHCANKLTAF
 KPTSSKSSSEATLSISPPRPTLLSLDLTKNTTEKLPSSPKVYLYIQMQLCRKENLKDWMNGRCTIEERE
 RSVCLHIFLQIAEAVEFLHSGKLMHRDLKPSNIFFTMDVVVKVGDVGLVTAMDQDEEQVLTTPMPAYAR
 HTGQVGTKLYMSPEQIHGNSYSHKVDIFSLGLILFELLYPFSTQMERVRTLTDVRNLKFPPLFTQKYPCE
 YVMVQDMLSPSPMERPEAINIENAVFEDLDFPGKTVLRQRSRSLSSSGTKHSRQSNNSHSPSPSN

TRTRPLEQKLI SEEDLAANDILDYKDDDDKV

Chromatograms: https://cdn.origene.com/chromatograms/mk6208_h04.zip
 Restriction Sites: SgfI-MluI
 Cloning Scheme:



ACCN: NM_004836
 ORF Size: 3348 bp

OTI Disclaimer: Due to the inherent nature of this plasmid, standard methods to replicate additional amounts of DNA in E. coli are highly likely to result in mutations and/or rearrangements. Therefore, OriGene does not guarantee the capability to replicate this plasmid DNA. Additional amounts of DNA can be purchased from OriGene with batch-specific, full-sequence verification at a reduced cost. Please contact our customer care team at custsupport@origene.com or by calling 301.340.3188 option 3 for pricing and delivery.

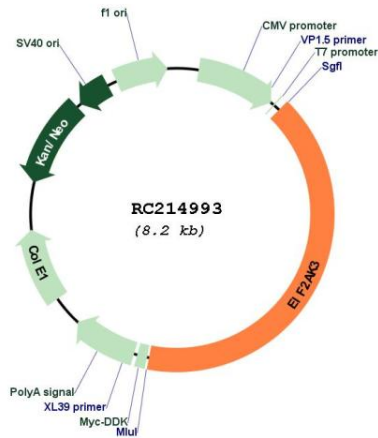
The molecular sequence of this clone aligns with the gene accession number as a point of reference only. However, individual transcript sequences of the same gene can differ through naturally occurring variations (e.g. polymorphisms), each with its own valid existence. This clone is substantially in agreement with the reference, but a complete review of all prevailing variants is recommended prior to use. [More info](#)

OTI Annotation: This clone was engineered to express the complete ORF with an expression tag. Expression varies depending on the nature of the gene.

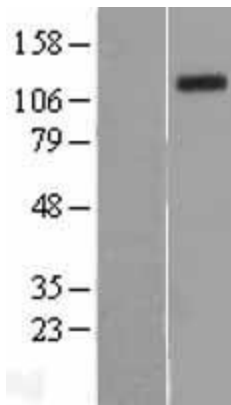
Components: The ORF clone is ion-exchange column purified and shipped in a 2D barcoded Matrix tube containing 10ug of transfection-ready, dried plasmid DNA (reconstitute with 100 ul of water).

Reconstitution Method:	<ol style="list-style-type: none">1. Centrifuge at 5,000xg for 5min.2. Carefully open the tube and add 100ul of sterile water to dissolve the DNA.3. Close the tube and incubate for 10 minutes at room temperature.4. Briefly vortex the tube and then do a quick spin (less than 5000xg) to concentrate the liquid at the bottom.5. Store the suspended plasmid at -20°C. The DNA is stable for at least one year from date of shipping when stored at -20°C.
Note:	Plasmids are not sterile. For experiments where strict sterility is required, filtration with 0.22um filter is required.
RefSeq:	NM_004836.7
RefSeq Size:	4511 bp
RefSeq ORF:	3351 bp
Locus ID:	9451
UniProt ID:	Q9NZJ5
Cytogenetics:	2p11.2
Domains:	pkinase, TyrKc, S_TKc, PQQ
Protein Families:	Druggable Genome, Protein Kinase, Secreted Protein, Transmembrane
Protein Pathways:	Alzheimer's disease
MW:	125.26 kDa
Gene Summary:	The protein encoded by this gene phosphorylates the alpha subunit of eukaryotic translation-initiation factor 2, leading to its inactivation, and thus to a rapid reduction of translational initiation and repression of global protein synthesis. This protein is thought to modulate mitochondrial function. It is a type I membrane protein located in the endoplasmic reticulum (ER), where it is induced by ER stress caused by malformed proteins. Mutations in this gene are associated with Wolcott-Rallison syndrome. [provided by RefSeq, Sep 2015]

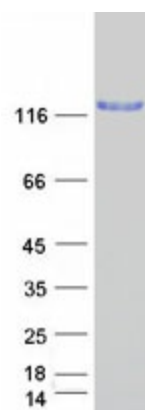
Product images:



Circular map for RC214993



Western blot validation of overexpression lysate (Cat# [LY417724]) using anti-DDK antibody (Cat# [TA50011-100]). Left: Cell lysates from untransfected HEK293T cells; Right: Cell lysates from HEK293T cells transfected with RC214993 using transfection reagent MegaTran 2.0 (Cat# [TT210002]).



Coomassie blue staining of purified EIF2AK3 protein (Cat# [TP314993]). The protein was produced from HEK293T cells transfected with EIF2AK3 cDNA clone (Cat# RC214993) using MegaTran 2.0 (Cat# [TT210002]).