

Product datasheet for RC214992

QPCTL (NM_017659) Human Tagged ORF Clone

Product data:

Product Type:	Expression Plasmids
Product Name:	QPCTL (NM_017659) Human Tagged ORF Clone
Tag:	Myc-DDK
Symbol:	QPCTL
Synonyms:	gQC
Mammalian Cell Selection:	Neomycin
Vector:	pCMV6-Entry (PS100001)
E. coli Selection:	Kanamycin (25 ug/mL)
ORF Nucleotide Sequence:	>RC214992 representing NM_017659 Red=Cloning site Blue=ORF Green=Tags(s)

TTTTGTAATACGACTCACTATAGGGCGGCCGGAATTCGTCGACTGGATCCGGTACCGAGGAGATCTGCC
GCC**CGATCGCC**

ATGCGTTCGGGGGCCGGGGACCCCGCTGCGGCTGGGGAACTGGCCTCATGGAGCCACTTTGC
CGCCGAAGCGCCGCTGCTACCGCGGGTTCGGCTCTTGCTGCGCTGGCCGTGGGCTCGGC
GTTCTACACCATTTGGAGCGGCTGGCACCAGGACTGAGGAGCTGCCGCTGGCCGGGAGCTCGGGT
CCATTGATCGGAAGCCTCCCGAAGCCCGCTGCGGAGGGTGGTGGACAACCTGGATCCACAGCGTCTCT
GGAGCACTTATCTGCGCCCTGCTGGTGTGCGAACCCTGGGAGCCCGGAAATCTCCAAGTCAGAAA
GTTCTGGAGGCCACGCTGCGGTCCCTGACAGCAGGTTGGCACGTGGAGCTGGATCCCTTACAGCCTCA
ACACCCCTGGGGCCAGTGGACTTTGGCAATGTGGTGGCCACACTGGACCAAGGGCTGCCGTCACTCA
CCCTTGCTGCCATTATGACTCGAAGCTCTTCCACCCGGATCGACCCCTTTGTAGGGGCCACGGATTC
GGCTGTGCCCTGTGCCCTGCTGCTGGAGCTGGCCCAAGCACTTGACCTGGAGCTGAGCAGGGCCAAAAA
CAGGCAGCCCGGTGACCCTGCAACTGCTCTTCTTGGATGGTGAAGAGCGCTGAAGGAGTGGGGACCA
AGGACTCCCTTACGGTTCGGGACCTGGCCAGCTCATGGAGTCTATACCTCACAGCCCGGCCCCAC
CAGGATCCAGGCTATTGAGCTCTTATGCTTCTTGATCTCCTGGGAGCCCCAATCCACCTTCTACAGC
CACTTCCCTCGCACGGTCCGCTGGTCCATCGGCTGAGGAGCATTGAGAAGCGTGCACCGTTTGAACC
TGCTGCAGTCTCATCCCGAAGTGTACTTCCAACCCGGGAGCCCTCTGGCTCTGTGGAAGACGA
CCACATCCCTTCTCCGAGAGGGTACCCGTGCTCCATCTCATCTCCACGCCCTTCCCTGCTGTCTGG
CACACCCCTGCGGACACCGAGGTCAATCTCCACCCACCCAGGTACACAACCTGTGCCGATTCTCGCTG
TGTTCTGGCTGAATACCTGGGGCTC

ACGCGTACGCGGCCGCTCGAGCAGAACTCATCTCAGAAGAGGATCTGGCAGCAATGATATCTGGATT
ACAAGGATGACGACGATAAGGTTTAA



[View online >](#)

Protein Sequence: >RC214992 representing NM_017659
 Red=Cloning site Green=Tags(s)

MRSGGRGRPRLRLGERGLMEPLLPKRRLLPRVRLPLLLALAVGSAFYTIWSGWHRRTEELPLGRELRV
 PLIGSLPEARLRRVVGQLDPQRLWSTYLRPLL VVRTPGSPGNLQVRKFLEATLRSLTAGWHVELDPFTAS
 TPLGPVDFGNVVATLDPRAARHLTLACHYDSKLFPPGSTPFVVGATDSAVPCALLLELAQALDLELSRAKK
 QAAPVTLQLFLDGEAEALKEWGPKDSL YGSRHLAQLMESIPHSPGPTRIQAIELFMLLDLLGAPNPTFYF
 HFPRTVRFHRLRSIEKRLHRLNLLQSHPQEVMYFQPGEPSSVEDDHIPFLRRGVPVLHLIISTPFFAVW
 HTPADTEVNLHPPTVHNLCRILAVFLAEYLG

TRTRPLEQKLISEEDLAANDILDYKDDDDKV

Restriction Sites:

Sgfl-MluI

Cloning Scheme:

Cloning sites used for ORF Shuttling:



* The last codon before the Stop codon of the ORF

ACCN: NM_017659

ORF Size: 1146 bp

OTI Disclaimer: Due to the inherent nature of this plasmid, standard methods to replicate additional amounts of DNA in E. coli are highly likely to result in mutations and/or rearrangements. Therefore, OriGene does not guarantee the capability to replicate this plasmid DNA. Additional amounts of DNA can be purchased from OriGene with batch-specific, full-sequence verification at a reduced cost. Please contact our customer care team at custsupport@origene.com or by calling 301.340.3188 option 3 for pricing and delivery.

The molecular sequence of this clone aligns with the gene accession number as a point of reference only. However, individual transcript sequences of the same gene can differ through naturally occurring variations (e.g. polymorphisms), each with its own valid existence. This clone is substantially in agreement with the reference, but a complete review of all prevailing variants is recommended prior to use. [More info](#)

OTI Annotation: This clone was engineered to express the complete ORF with an expression tag. Expression varies depending on the nature of the gene.

Components: The ORF clone is ion-exchange column purified and shipped in a 2D barcoded Matrix tube containing 10ug of transfection-ready, dried plasmid DNA (reconstitute with 100 ul of water).

Reconstitution Method:

1. Centrifuge at 5,000xg for 5min.
2. Carefully open the tube and add 100ul of sterile water to dissolve the DNA.
3. Close the tube and incubate for 10 minutes at room temperature.
4. Briefly vortex the tube and then do a quick spin (less than 5000xg) to concentrate the liquid at the bottom.
5. Store the suspended plasmid at -20°C. The DNA is stable for at least one year from date of shipping when stored at -20°C.

RefSeq: [NM_017659.1](#), [NP_060129.1](#)

RefSeq Size: 1574 bp

RefSeq ORF: 1149 bp

Locus ID: 54814

UniProt ID: [Q9NXS2](#)

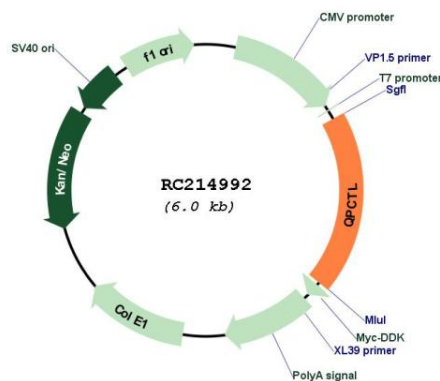
Cytogenetics: 19q13.32

Protein Families: Protease, Transmembrane

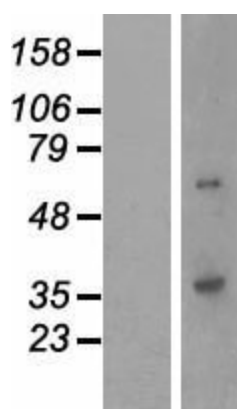
MW: 42.7 kDa

Gene Summary: Responsible for the biosynthesis of pyroglutamyl peptides.[UniProtKB/Swiss-Prot Function]

Product images:



Circular map for RC214992



Western blot validation of overexpression lysate (Cat# [LY413657]) using anti-DDK antibody (Cat# [TA50011-100]). Left: Cell lysates from untransfected HEK293T cells; Right: Cell lysates from HEK293T cells transfected with RC214992 using transfection reagent MegaTran 2.0 (Cat# [TT210002]).