

Product datasheet for RC214991

CHMP1A (NM_002768) Human Tagged ORF Clone

Product data:

Product Type: Expression Plasmids
Product Name: CHMP1A (NM_002768) Human Tagged ORF Clone
Tag: Myc-DDK
Symbol: CHMP1A
Synonyms: CHMP1; PCH8; PCOLN3; PRSM1; VPS46-1; VPS46A
Mammalian Cell Selection: Neomycin
Vector: pCMV6-Entry (PS100001)
E. coli Selection: Kanamycin (25 ug/mL)
ORF Nucleotide Sequence: >RC214991 representing NM_002768
 Red=Cloning site Blue=ORF Green=Tags(s)

TTTTGTAATACGACTCACTATAGGGCGGCCGGAATTCGTCGACTGGATCCGGTACCGAGGAGATCTGCC
 GCC**CGATCGCC**

ATGGACGATACCCTGTTCCAGTTGAAGTTCACGGCGAAGCAGCTGGAGAAGCTGGCCAAGAAGCGGAGA
 AGGACTCCAAGGCGGAGCAGGCCAAAGTGAAGAAGGCCCTTCTGCAGAAAAATGTAGAGTGTGCCGTGT
 GTATGCCGAGAACGCCATCCGCAAGAAGAACGAAGGTGTGAAGTGGCTTCGGATGGCGTCCCGGTAGAC
 GCAGTGGCTCCAAGGTGCAGACAGCTGTGACTATGAAGGGGTGACCAAGAATATGGCCAGGTGACCA
 AAGCCCTGGACAAGGCCCTGAGCACCATGGACCTGCAGAAGGTCTCCTCAGTGATGGACAGTTCGAGCA
 GCAGGTGCAGAACCTGGACGTCCATACATCGGTGATGGAGGACTCCATGAGCTCGGCCACCACCCTGACC
 ACGCCGAGGAGCAGGTGGACAGCTCATCATGCAGATCGCCGAGGAGAATGGCCTGGAGGTGCTGGACC
 AGCTCAGCCAGCTGCCGAGGGCGCCTCTGCCGTGGGCGAGAGCTCTGTGCGCAGCCAGGAGGACCAGCT
 GTCACGGAGGTTGGCCGCTTGAAGAAC

ACGCGTACGCGGCCGCTCGAGCAGAACTCATCTCAGAAGAGGATCTGGCAGCAATGATATCCTGGATT
 ACAAGGATGACGACGATAAGGTTTAA

Protein Sequence: >RC214991 representing NM_002768
 Red=Cloning site Green=Tags(s)

MDDTLFQLKFTAKQLEKLAKKAIEKDSKAEQAKVKKALLQKNVECARVYAENAIRKKNEGVNWLRMASRVD
 AVASKVQTAVTMKGVTKNMAQVTKALDKALSTMDLQKVSSVMDRFEQQVQNLVDVHTSVMEDSMSSATLTLT
 TPQEVDLSLIMQIAEENGLVLDQLSQLPEGASAVGESSVRSQEDQLSRRLAALRN

TRTRPLEQKLISEEDLAANDILDYKDDDDKV



[View online »](#)

Chromatograms: https://cdn.origene.com/chromatograms/mk8027_d11.zip

Restriction Sites: SgfI-MluI

Cloning Scheme:



ACCN: NM_002768

ORF Size: 588 bp

OTI Disclaimer: The molecular sequence of this clone aligns with the gene accession number as a point of reference only. However, individual transcript sequences of the same gene can differ through naturally occurring variations (e.g. polymorphisms), each with its own valid existence. This clone is substantially in agreement with the reference, but a complete review of all prevailing variants is recommended prior to use. [More info](#)

OTI Annotation: This clone was engineered to express the complete ORF with an expression tag. Expression varies depending on the nature of the gene.

Components: The ORF clone is ion-exchange column purified and shipped in a 2D barcoded Matrix tube containing 10ug of transfection-ready, dried plasmid DNA (reconstitute with 100 ul of water).

Reconstitution Method:

1. Centrifuge at 5,000xg for 5min.
2. Carefully open the tube and add 100ul of sterile water to dissolve the DNA.
3. Close the tube and incubate for 10 minutes at room temperature.
4. Briefly vortex the tube and then do a quick spin (less than 5000xg) to concentrate the liquid at the bottom.
5. Store the suspended plasmid at -20°C. The DNA is stable for at least one year from date of shipping when stored at -20°C.

RefSeq: [NM_002768.5](#)

RefSeq Size: 2474 bp

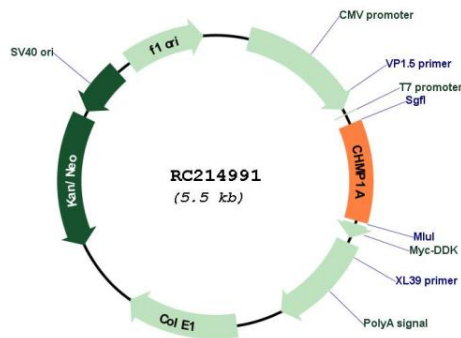
RefSeq ORF: 591 bp

Locus ID: 5119

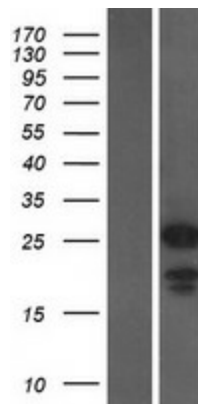
UniProt ID: [Q9HD42](#)
Cytogenetics: 16q24.3
Protein Families: Druggable Genome, Transcription Factors
MW: 21.5 kDa

Gene Summary: This gene encodes a member of the CHMP/Chmp family of proteins which are involved in multivesicular body sorting of proteins to the interiors of lysosomes. The initial prediction of the protein sequence encoded by this gene suggested that the encoded protein was a metalloproteinase. The nomenclature has been updated recently to reflect the correct biological function of this encoded protein. Several transcripts encoding different isoforms have been found for this gene. [provided by RefSeq, Dec 2012]

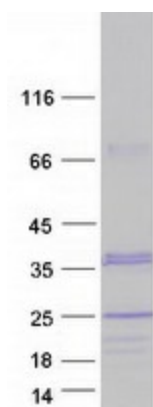
Product images:



Circular map for RC214991



Western blot validation of overexpression lysate (Cat# [LY419102]) using anti-DDK antibody (Cat# [TA50011-100]). Left: Cell lysates from untransfected HEK293T cells; Right: Cell lysates from HEK293T cells transfected with RC214991 using transfection reagent MegaTran 2.0 (Cat# [TT210002]).



Coomassie blue staining of purified CHMP1A protein (Cat# [TP314991]). The protein was produced from HEK293T cells transfected with CHMP1A cDNA clone (Cat# RC214991) using MegaTran 2.0 (Cat# [TT210002]).