

Product datasheet for **RC214989**

LMBRD2 (NM_001007527) Human Tagged ORF Clone

Product data:

Product Type:	Expression Plasmids
Product Name:	LMBRD2 (NM_001007527) Human Tagged ORF Clone
Tag:	Myc-DDK
Symbol:	LMBRD2
Mammalian Cell Selection:	Neomycin
Vector:	pCMV6-Entry (PS100001)
E. coli Selection:	Kanamycin (25 ug/mL)



[View online »](#)

ORF Nucleotide Sequence:

>RC214989 representing NM_001007527
 Red=Cloning site Blue=ORF Green=Tags(s)

TTTTGTAATACGACTCACTATAGGGCGGCCGGAATTCGTCGACTGGATCCGGTACCGAGGAGATCTGCC
 GCC**CGGATCGCC**

ATGAGTGGTGCAGCTTTGGGACTTGAGATTGTTTTGTCTTTTTCTGGCATTATTTCTGCTTCATCGAT
 ATGGAGACTTTAAGAAACAGCATAGACTTGTGATTATTGGAACACTGCTTGCTTGGTATCTCTGCTTTCT
 TATTGTCTTCATACTGCCTCTGGATGTTAGTACGACAATATACAACCGGTGCAAGCATGCTGCTGCAAA
 TCAAGCCCTCCTGAGAATAGCAACATTACAGGATTGTACGCAACTGCTAACCTGTTCCAAGCCAGCATC
 CTTGTTTCAAGCCATGGAGTTACATTCTGATGGAATCATGCCAATTTTCTGGAGGGTAGTGATTGGAC
 GTCACAATTTTTAACATGGATTCTTACCTTTTATGCAGTCATATGCAAGATCAGGAGGGTTTTCCATC
 ACTGGAAGATCAAACTGCACTAATTGAGAATGCAATCTACTATGGCACCTATTTGCTGATTTTTGGAG
 CATTTTTAATTTATGTAGCTGTAACCCACATTTACATTTAGAATGGAACCAGCTTCAGACAATTGGGAT
 AGCTGCTGCAAAACATGGGGTCTGTTTCTTCTGTGTTGTTGTTGGGGTATGGCTTGGTGGAAATTCCT
 CGATCATACTGGAATGGAGCAAAAAGGGTTATCTACTTATGAAAACGTATTTAAGGCAGCCAAAATGA
 TGACAGAGAAAAGCAGATGCAAGAAGAAATTTGGAAGATGCCATGGAGGAGTTTCGTAAGGTGAATGAAAG
 CATCAAGTATAATCACCCATTGAGAAAATGTGTTGATACAATACTTAAAAAGTGCCCTACAGAGTATCAG
 GAAAAATGGGTAGGAACATGGATGATTATGAAGATTTTGATGAAAAGCATAGTATCTATCCAAGTGAAA
 AAAGTCTGGTAAAACGCATAAACAGGTGATTTATTCAAGTTCAGAGACACCGTCGAACTCAAGTACAATG
 GCAGATCTTTTGAACAAGCATTTTATCTAGAAGATGTAGCAAAAAATGAACTAGTGTACTCATCAG
 TTTGTTACACCTTTCAATCGCCAGAGCCAGAAAAATCGATTTATCCAATATTTTTATAATCTACATTTG
 AATGGTACTGGGAATGTCTTTTGGCACCATGGTTTTACAAGATACTTGCTGTGGTCTGTCCATCTTCTC
 TGTGATTGTTGTGGTCAGAGTGCACATCTTTAGCACTACTCCTGTCTTATCCCTCTTTGCGGTCTTC
 ATACAGCTGGCAGAAAAACATATAAATTATTTATATCGAGATTGCCTGCTTCTTTCCATCTTCTTCC
 TAAGTATCTGTGTTTATTCTACTGTGTTGAGGATTCGTGATTTAACTATTATTATTTGGCCTCACATCA
 CCAGACTGATGCTTATAGCCTTCTTTTCAAGTGGCATGCTATTTTGCCGTTTGACACCTCCTTTATGTCTT
 AATTTCTGGGTTTGACCCATATGGATTCATCTATCTCTACAAGAATACTCAACCAACTGCTTATACAT
 CTATTATGGGTTCCATGAAAGTTTTATCCTTTATTGCAGATGGATTCTATATATATTATCCTATGTTGGT
 GGTAAATCTCTGCATTGCTACTTATTTAGTTTGGGAACCGTTGTTGAATCTGCTCGGTTTCCAGCAG
 TTTATGGGAGATGATGATATGACATCAGACTTAGTTAATGAAGGAAAAGAATTAATCAGAAAAGAGAAGA
 GAAAAAGGCAAGGCAAGAAGAAGGTGAAAATCGAAGAAGAGAATGGAAAAGACGTTATGGACACAATAG
 AGAAGATTCACACTAGGAACAGAAATATTCATACTGACCCCAAAGAGTCAAACCTTCTCAGATGTTAATACC
 AACCGTTCTGCATTCAAATATACCAGGGCTAATAACAGGACTGAAAGGGACCGGATAGAACTTCTCCAAG
 ATGCAGAACCTTTGGATTTAATGCAGAAACATTCAGTATGATCCTCTTGAATCTGAAATCAGGAAGGTA
 TCAGCCTGGTGGACGATATCTCTCGATGTCTCGCAGTGACATATTTAATGATGTT

ACGCGTACGCGGCCGCTCGAGCAGAACTCATCTCAGAAGAGGATCTGGCAGCAATGATATCCTGGATT
 ACAAGGATGACGACGATAAGGTTTAA

Protein Sequence: >RC214989 representing NM_001007527
 Red=Cloning site Green=Tags(s)

```

MSGAALGLEIVFVFFLALFLLHRYGDFKQHLVIIGTLLAWYLCFLIVFILPLDVSTTIYNRCKHAAAN
SSPPENSNI TGL YATANPVPSQHPCKPWSYIPDGIMPIFWRVVYWTSQFLTWILLPFMQSYARSGGFSI
TGKIKTAL IENAIYYGYLLIFGAFLIYVAVNPHLHLEWNQLQTIGIAAANTWGLFLLVLLGYGLVEIP
RSYWNGAKRGYLLMKTYFKAAKLMTEKADAEENLEDAMEEVRKVNESIKYNHPLRKCVDITLKKCPTEYQ
EKMGRNMDDYEDFDEKHSIYPSEKSLVKLHKQVIYSVQRHRRRTQVQWQILLEQAFYLEDVAKNETSATHQ
FVHTFQSPEPENRFIQYFYNPTFEWYWECLLRPWFYKILAVVLSIFSVIVVWSECTFFSTTPVLSLFAVF
IQLAEKTYNYIYIEIACFLSIFFLSICVYSTVFRIRVFNYYLASHHQTDAYSLLFSGMFLCRLTPPLCL
NFLGLTHMSSISHKNTQPTAYTSIMGSMKVL SF IADGFYIYYPMLVVILCIATYFSLGTRCLNLLGFQQ
FMGDDMTSDLVNEGKELIRKEKRKRQRQEEGENRRREWKERYGHNREDSTRNRNIHTDPKESNFSDVNT
NRS AFKYTRANRTERDRIELLQDAEPLDFNAETFDDPLESESGRYQPGGRYLMSRSDFNDV
  
```

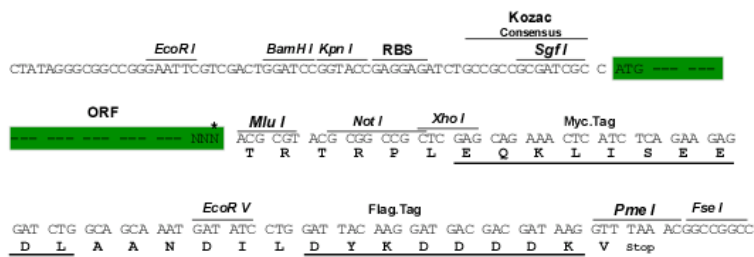
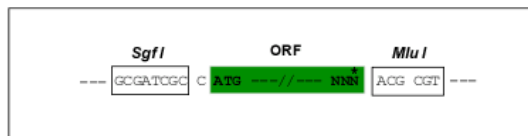
TRTRPLEQKLISEEDLAANDILDYKDDDDKV

Chromatograms: https://cdn.origene.com/chromatograms/mk8102_e07.zip

Restriction Sites: SgfI-MluI

Cloning Scheme:

Cloning sites used for ORF Shuttling:



* The last codon before the Stop codon of the ORF

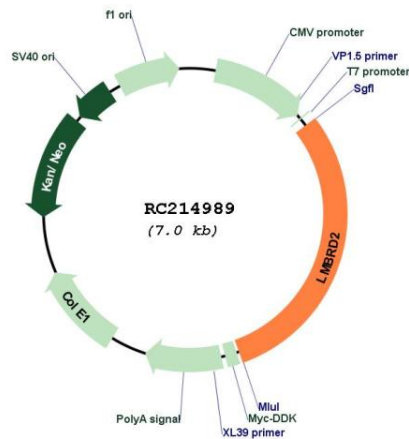
ACCN: NM_001007527

ORF Size: 2085 bp

OTI Disclaimer: The molecular sequence of this clone aligns with the gene accession number as a point of reference only. However, individual transcript sequences of the same gene can differ through naturally occurring variations (e.g. polymorphisms), each with its own valid existence. This clone is substantially in agreement with the reference, but a complete review of all prevailing variants is recommended prior to use. [More info](#)

OTI Annotation: This clone was engineered to express the complete ORF with an expression tag. Expression varies depending on the nature of the gene.

Components:	The ORF clone is ion-exchange column purified and shipped in a 2D barcoded Matrix tube containing 10ug of transfection-ready, dried plasmid DNA (reconstitute with 100 ul of water).
Reconstitution Method:	<ol style="list-style-type: none"> 1. Centrifuge at 5,000xg for 5min. 2. Carefully open the tube and add 100ul of sterile water to dissolve the DNA. 3. Close the tube and incubate for 10 minutes at room temperature. 4. Briefly vortex the tube and then do a quick spin (less than 5000xg) to concentrate the liquid at the bottom. 5. Store the suspended plasmid at -20°C. The DNA is stable for at least one year from date of shipping when stored at -20°C.
RefSeq:	<u>NM_001007527.2</u>
RefSeq Size:	3237 bp
RefSeq ORF:	2088 bp
Locus ID:	92255
UniProt ID:	<u>Q68DH5</u>
Cytogenetics:	5p13.2
Protein Families:	Transmembrane
MW:	81.2 kDa
Gene Summary:	Recruited to ligand-activated beta-2 adrenergic receptor/ADRB2, it negatively regulates the adrenergic receptor signaling pathway (PubMed:28388415). May also regulate other G-protein coupled receptors including type-1 angiotensin II receptor/AGTR1 (Probable). [UniProtKB/Swiss-Prot Function]

Product images:


Circular map for RC214989