

## Product datasheet for **RC214976**

### EPS8 like protein 3 (EPS8L3) (NM\_024526) Human Tagged ORF Clone

#### Product data:

Product Type:	Expression Plasmids
Product Name:	EPS8 like protein 3 (EPS8L3) (NM_024526) Human Tagged ORF Clone
Tag:	Myc-DDK
Symbol:	EPS8 like protein 3
Synonyms:	EPS8R3; HYPT5
Mammalian Cell Selection:	Neomycin
Vector:	pCMV6-Entry (PS100001)
E. coli Selection:	Kanamycin (25 ug/mL)



[View online »](#)

**ORF Nucleotide Sequence:**

>RC214976 representing NM\_024526  
 Red=Cloning site Blue=ORF Green=Tags(s)

TTTTGTAATACGACTCACTATAGGGCGGCCGGAATTCGTCGACTGGATCCGGTACCGAGGAGATCTGCC  
 GCC**CGGATCGCC**

ATGTCAAGGCCACGACGAGCCATTTACTTGCACCGGAAGGAGTACTCCAGAACCTCACCTCAGAGC  
 CCACCCTCTGCAGCACAGGGTGGAGCACTTGATGACATGCAAGCAGGGGAGTCAGAGAGTCCAGGGGCC  
 CGAGGATGCCTTGCAGAAGCTGTTTCGAGATGGATGCACAGGGCCGGGTGTGGAGCCAAGACTTGATCCTG  
 CAGGTCAGGGACGGCTGGCTGCAGCTGTGGACATTGAGACCAAGGAGGAGCTGGACTCTTACCGCCTAG  
 ACAGCATCCAGGCCATGAATGTGGCGCTCAACACATGTTCTACAACCTCCATCCTGTCCATCACCGTGCA  
 GGAGCCGGGCTGCCAGGCACTAGCACTCTGCTTCCAGTGCCAGGAAGTGGGGCAGAGCGACTGAAG  
 ACCAGCCTGCAGAAGGCTCTGGAGGAAGAGCTGGAGCAAAGACCTCGACTTGGAGGCCTTACGCCAGGCC  
 AGGACAGATGGAGGGGCTGCTATGAAAGGCCGCTCCCTATGGAGCAGGCACGCTATCTGGAGCCGGG  
 GATCCCTCCAGAACAGCCCAACAGAGGACCCTAGAGCACAGCCTCCACCATCCCAAGGCCCTGCCA  
 CGCCACACAGTGCCTGAGAACCAAGTGCTTTACTCTGCCTCCTCAAGCGGTCTCTTCCCGGAGG  
 ACCCAGAGAGGGACGAGGAAGTGTGAACCATGTCTAAGGGACATTGAGCTGTTTATGGAAAGCTGGA  
 GAAGGCCACAGCAAAGACCAGCAGGAAGAAGAAATTTGGGAAAAAACAAGACCAGGGAGGTCTCACC  
 CAGGCACAGTACATTGACTGCTTCCAGAAGATCAAGCACAGCTTCAACCTCCTGGGAAGGCTGGCCACCT  
 GGCTGAAGGAGACAAGTGCCCTGAGCTCGTACACATCCTTCAAGTCCCTGAACTTATCCTGGCCAG  
 GTGCCCTGAGGCTGGCTAGCAGCCCAAGTATCTCACCCCTCCTCACCCCTAAAGCTATCAACCTGCTA  
 CAGTCTGTCTAAGCCCACCTGAGAGTAACCTTTGGATGGGTTGGGCCAGCCTGGACCACTAGCCGGG  
 CCGCATGGACAGCGGATGAGCCCTGCCCTACCAACCCACATTTCTCAGATGACTGGCAACTCCAGAGCC  
 CTCAGCCAAAGCACCTTAGGATACCAGGACCCTGTTTCCCTTCGGCCCTCCAGCCCAACCTGCCCAG  
 CCAGCCCTGAAAAATGCAAGTCTTGTACGAGTTTGAAGCTAGGAACCCACGGGAAGTACTGTGGTCCAGG  
 GAGAGAAGCTGGAGGTTCTGGACCACAGCAAGCGGTGGTGGTGAAGAATGAGGCGGGACGGAGCGG  
 CTACATTTCAAGCAACATCCTGGAGCCCTACAGCCGGGACCCTGGGACCCAGGGCCAGTACCCTCT  
 CGGGTTCAATGCTTCGACTTAGCTCGAGGCTGAAGAGGTCACAGACTGGCTGCAGGCAGAGAATTCT  
 CCACTGCCACGGTGAAGCACTTGGTCCCTGACGGGGAGCCAGCTACTTCGCATAAGACCTGGGGAGCT  
 ACAGATGCTATGTCCACAGGAGGCCACGAATCTGTCCGGCTGGAGGCTGTGAGAAGGATGCTGGG  
 ATAAGCCCT

**ACGCGT**ACGCGGGCCGCTCGAGCAGAAACTCATCTCAGAAGAGGATCTGGCAGCAAATGATATCCTGGATT  
 ACAAGGATGACGACGATAAGGTTTAA

**Protein Sequence:**

>RC214976 representing NM\_024526  
 Red=Cloning site Green=Tags(s)

MSRPSSRAIYLHRKEYSQNLTSEPTLLQHRVEHLMTCKQGSQRVQGPEDALQKLFEMDAQGRVWSQDLIL  
 QVRDGLQLLDIETKEELDSYRLDSIQAMNVALNTCSYNSILSITVQEPGLPGTSTLLFQCQEVGAERLK  
 TSLQKALEEELEQRPLGGLQPGQDRWRGPAMERPLPMEQARYLEPGIPPEQPHQRTLEHSLPPSPRPLP  
 RHTSAREPSAFTLPPRRSSSPEDPERDEEVLNHVLRDIELFMGKLEKAQAKTSRKKKFGKKNKDQGLT  
 QAQYIDCFQKIKHSFNLLGRLATWLKETSAPELVHILFKSLNFILARCPEAGLAAQVISPLLTPKAINLL  
 QSCLSPPESNLWMGLGPAWTTSRADWTGDEPLPYQPTFSDDWQLPEPSSQAPLGYQDPVSLRPSSPKPAQ  
 PALKMQVLYEFEARNPRELTVVQGEKLEVLHDSKRWWLVKNEAGRSYIPSNILEPLQPGTPTGQSPS  
 RVPMLRLSSRPPEEVDWLQAENFSTATVRTLGSLLRIRPQELQMLCPQEAPRILSRLEAVRRMLG  
 ISP

**TR**TRPLEQKLISEEDLAANDILDYKDDDDKV

**Chromatograms:**

[https://cdn.origene.com/chromatograms/mk8027\\_e03.zip](https://cdn.origene.com/chromatograms/mk8027_e03.zip)

**Restriction Sites:**

Sgfl-Mlul

**Cloning Scheme:**


**ACCN:** NM\_024526

**ORF Size:** 1689 bp

**OTI Disclaimer:** The molecular sequence of this clone aligns with the gene accession number as a point of reference only. However, individual transcript sequences of the same gene can differ through naturally occurring variations (e.g. polymorphisms), each with its own valid existence. This clone is substantially in agreement with the reference, but a complete review of all prevailing variants is recommended prior to use. [More info](#)

**OTI Annotation:** This clone was engineered to express the complete ORF with an expression tag. Expression varies depending on the nature of the gene.

**Components:** The ORF clone is ion-exchange column purified and shipped in a 2D barcoded Matrix tube containing 10ug of transfection-ready, dried plasmid DNA (reconstitute with 100 ul of water).

- Reconstitution Method:**
1. Centrifuge at 5,000xg for 5min.
  2. Carefully open the tube and add 100ul of sterile water to dissolve the DNA.
  3. Close the tube and incubate for 10 minutes at room temperature.
  4. Briefly vortex the tube and then do a quick spin (less than 5000xg) to concentrate the liquid at the bottom.
  5. Store the suspended plasmid at -20°C. The DNA is stable for at least one year from date of shipping when stored at -20°C.

**RefSeq:** [NM\\_024526.4](#)

**RefSeq Size:** 2166 bp

**RefSeq ORF:** 1692 bp

**Locus ID:** 79574

**UniProt ID:** [Q8TE67](#)

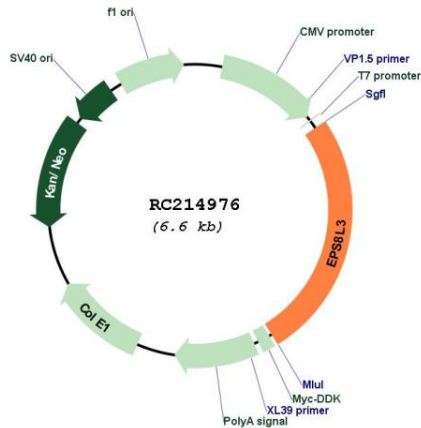
**Cytogenetics:** 1p13.3

**Protein Families:** Druggable Genome

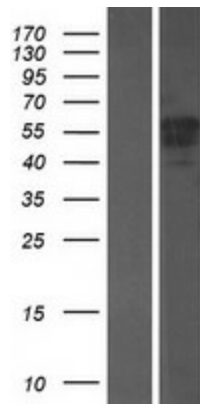
**MW:** 63.3 kDa

**Gene Summary:** This gene encodes a protein that is related to epidermal growth factor receptor pathway substrate 8 (EPS8), a substrate for the epidermal growth factor receptor. The function of this protein is unknown. Alternatively spliced transcript variants encoding different isoforms exist. [provided by RefSeq, Jul 2008]

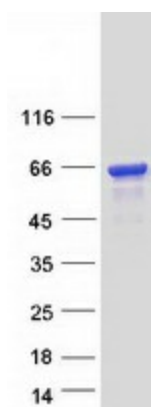
**Product images:**



Circular map for RC214976



Western blot validation of overexpression lysate (Cat# [LY411269]) using anti-DDK antibody (Cat# [TA50011-100]). Left: Cell lysates from untransfected HEK293T cells; Right: Cell lysates from HEK293T cells transfected with RC214976 using transfection reagent MegaTran 2.0 (Cat# [TT210002]).



Coomassie blue staining of purified EPS8L3 protein (Cat# [TP314976]). The protein was produced from HEK293T cells transfected with EPS8L3 cDNA clone (Cat# RC214976) using MegaTran 2.0 (Cat# [TT210002]).