

## Product datasheet for **RC214968**

### THBS3 (NM\_007112) Human Tagged ORF Clone

#### Product data:

Product Type:	Expression Plasmids
Product Name:	THBS3 (NM_007112) Human Tagged ORF Clone
Tag:	Myc-DDK
Symbol:	THBS3
Synonyms:	TSP3
Mammalian Cell Selection:	Neomycin
Vector:	pCMV6-Entry (PS100001)
E. coli Selection:	Kanamycin (25 ug/mL)



[View online »](#)

**ORF Nucleotide Sequence:**

>RC214968 ORF sequence  
 Red=Cloning site Blue=ORF Green=Tags(s)

TTTTGTAATACGACTCACTATAGGGCGGCCGGGAATTCGTCGACTGGATCCGGTACCGAGGAGATCTGCC  
 GCC**CGCATCGCC**

ATGGAGACGCAGGAACCTCGGGGGCCCTGGCTCTTCTCCTCTTTGCTTTTTACATCTGCCAGTCAGG  
 ATCTGCAGGTAATTGACCTGCTGACTGTGGGTGAGTCTCGGCAGATGGTAGCTGTGGCAGAGAAGATCCG  
 GACAGCCTTGCTCACTGTGGGACATCTACCTTATCCACCTTCCGCCTGCCCCCAAGCAGGGTGGT  
 GTCCTCTTTGGCCTCTATTCTCGCAAGACAACACTCGATGGCTGGAGGCCTCTGTTGTAGGCAAGATCA  
 ACAAAGTACTGGTGCATACCAGCGGGAGGATGGCAAAGTCCACGCCGTGAACCTACAGCAAGCGGGCCT  
 GGCTGATGGGCGCACACACAGTTCTCCTGCGACTCCGAGGTCCCTCCAGACCCAGCCCTGCCCTACAT  
 CTCTACGTGGACTGCAAACCTGGGTGACCAACATGCAGGCCTTCCAGCACTGGCCCCATTCTCCAGCGG  
 AGGTGCATGGGCTGGAGATTAGGACTGGACAGAAGGCGTATTTGAGGATGCAGGGCTTTGTGGAATCTAT  
 GAAAATTATTCTGGGTGGTCCATGGCCCGGGTAGGAGCCCTGAGTGAGTGTCCATTCCAAGGGGACGAG  
 TCCATCCACAGTGCAGTGACCAATGCACCTGCACCTCCATTCTAGGGGAGCAGACCAAGGCGCTGGTACCC  
 AACTCACCTCTTCAACCAGATCCTGGTGGAGCTGCGGGATGATATACGAGACCAGGTGAAGGAAATGTC  
 CCTGATCCGAAACACCATTATGGAGTGTGAGGTGTGCGGCTTCCATGAGCAGCGTTCCCACTGCAGCCCC  
 AATCCCTGCTTCCGAGGTGTGGACTGCATGGAAGTGTACGAGTACCCAGGCTACCCTGTGGGCCCTGCC  
 CCCCTGGCCTGCAGGGCAACGGCACCCACTGCAGTGACATCAATGAGTGTCTCACGCTGACCCCTGTTT  
 CCCGGCTCCAGCTGCATCAACACCATGCCCGGCTTCCACTGTGAGGCCTGTCTCGAGGGTACAAGGGC  
 ACACAGGTGTGGTGTGGCATTGACTATGCCCGGGCCAGCAAACAGGTCTGCAATGACATCGATGAAT  
 GCAACGATGGCAACAATGGTGGCTGTGACCCAACTCCATCTGCACCAACACTGTGGGCTCTTTCAAGTG  
 TGGTCCCTGCCGCTGGGTTTCTGGGCAACCAGAGCCAGGGCTGCCTCCAGCCCGACCTGCCACAGC  
 CCAGCCCACAGCCCTGCCACATCCATGCTCACTGTCTTTGAACGCAATGGTGCAGTGTCTGCCAGT  
 GTAACGTGGGCTGGGCTGGGAATGGGAACGTGTGTGGACTGACACAGACATCGATGGCTACCCAGACCA  
 AGCACTGCCCTGCATGGACAACAACAACACTGCAAAACAGGACAACCTGCCTTTTGACACCCAACCTGGG  
 CAGGAAGATGCTGATAATGATGGTGTGGGGACCAGTGTGATGATGATGCTGATGGGGATGGGATCAAGA  
 ATGTTGAGGACAACCTGCCGGCTTCCCAACAAGACCAGCAGAACTCAGATACAGATTCATTTGGTGA  
 TGCTGTGACAATTGCCCAACGTTCCCAACAATGACCAGAAGGACACAGATGGCAATGGGAAGGAGAT  
 GCCTGTGACAACGACGTGGATGGGGATGGCATCCCAATGGATTGGACAATTGCCCTAAAGTCCCAACC  
 CACTACAGACAGACAGGGATGAGGACGGGTGGGAGATGCTTGGCAGAGCTGCCCTGAAATGAGCAATCC  
 TACCCAGACAGATGCAGACAGCGACCTGGTGGGGGATGTCTGTGATACTAATGAAGACAGCGATGGGGAT  
 GGGCATCAGGACACCAAGGACAACCTGCCACAGCTGCCAAATAGCTCCCAGCTGGACTCTGATAACGATG  
 GACTTGGAGATGAGTGTGATGGGGATGATGACAATGATGGCATCCAGATTATGTGCCTCCTGGTCCCGA  
 TAACTGCCGCTGGTACCCAATCCCAATCAGAAGGACTCAGATGGCAATGGCGTTGGTGTGTGTGAG  
 GATGACTTTGACAATGATGCTGTGGTGCACCCCTGGATGTGTGTCTGAAAGTGCAGAGGTAACGCTTA  
 CGGATTTTCGGGCTATCAGACCGTCTGCTGGATCCTGAGGGTGTGCTCAGATTGACCCAACTGGGT  
 TGTGCTCAACCAGGGCATGGAAATCGTTCAGACCATGAACAGTGACCCTGGCTTGGCAGTTGGATACAG  
 GCCTTCAATGGTGTGGACTTTGAAGGCACCTCCATGCGAACACAGTGAAGTGTGATGACTACGACGGCT  
 TTCTCTCAGTTATCAAGACAGTGGCCGTTCTACGTAGTCATGTGGAAGCAGACCGAGCAGACCTACTG  
 GCAGGCTACACCTTCCGGGCGGTTGCCAGCCCGGGCTGCAGCTCAAGGCAGTGACATCAGTGTCTGGC  
 CCAGGTGAGCACCTCCGAAATGCCCTGTGGCATACTGGCCACACCCCTGATCAGGTACGACTGCTGTGGA  
 CAGACCCACGAAATGTGGGCTGGCGGGACAAGACCTCCTATCGCTGGCAGCTTCTGCACCGGCTCAAGT  
 TGGCTACATTCCGGTGAAGCTCTATGAGGGACCCAGCTTGTGGCGGATTCTGGGGTGTATTGACACA  
 TCCATGCGAGGGGGCGTCTTGGTGTATTCTGCTTCTCCCAAGAAAACATAATTTGGTCCAATCTCCAGT  
 ATCGATGCAATGACACAGTGCCTGAGGACTTTGAGCCATCCGGAGGCAGCTGTCCAGGGAAGGGTG

**ACGCGT**ACGCGGCCGCTCGAGCAGAACTCATCTCAGAAGAGGATCTGGCAGCAAATGATATCCTGGATT  
 ACAAGGATGACGACGATAAGGTTTAA

**Protein Sequence:** >RC214968 protein sequence  
Red=Cloning site Green=Tags(s)

```

METQELRGALALLLLCFFTSASQDLQVIDLLTVGESRQMVAVAEKIRTALLTAGDIYLLSTFRLPPKQGG
VLFGLYSRQDNTRWLEASVVGKINKVLVRYQREDGKVHAVNLQQAGLADGRHTHTVLLRLRGRSPRSPALH
LYVDCKLGDQHAGLPALAPIPPAEVDGLEIRTGQKAYLRMQGFVSMKIIILGGSMARVVGALSECPFQGD
SIHSAVTNALHSILGEQTKALVTQLTLFNQILVELRDDIRDQVKEMSLIRNTIMECQVCGFHEQRSHCSP
NPCFRGVDCMEVYEPGYRCGPPGLQGNTHCSIDINECAHADPCFPGSSCINTMPGFHCEACPRGYKG
TQVSGVGIDYARASKQVCNDIDECNDGNNGGCDPNSICTNTVGSFKCGPCRLGFLGNQSQGCLPARTCHS
PAHSPCHIAHCLFERNGAVSCQCNVWAGNGVCGTDTDIDGYPDQALPCMDNNKHCKQDNCLLTPNSG
QEDADNDGVGDQDDADGDGKINVEDNCRLFPNKDQQNSDTSDFGDACDNCNPNVNDQKDTDNGEGD
ACDNDVDGDGIPNGLDNCPKVPNPLQTDREDEGVGDACDSCPEMSNPTQTADSDLVGDVCDTNEGSDG
GHQDTKDNCPQLPNSSQLDSDNDGLGDECDGDDNDGIPDYVPPGPDNCRVLPNPNQKSDGNGVGDVCE
DDFDNDAVVDPLDVCPEAEVTLTDFRAYQTVVLDPEGDAQIDPNWVVLNQGMEIVQTMNSDPGLAVGYT
AFNGVDFEGTFHANTVTDDDYAGFLFSYQDSGRFYVVMWKQTEQTYWQATPFRAVAQPLQLKAVTSVSG
PGEHLRNALWHTGHTPDQVRLWTDPRNVGWRDKTSYRWQLLHRPQVGYIRVKLYEGPQLVADSGVIIDT
SMRGGRLGVFCFSQENI IWSNLQYRCNDTVPEDFEPFRRQLLQGRV
    
```

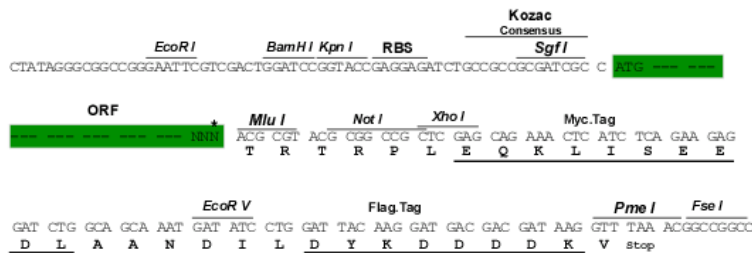
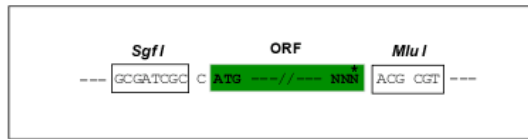
TRTRPLEQKLISEEDLAANDILDYKDDDDKV

**Chromatograms:** [https://cdn.origene.com/chromatograms/mk6561\\_e11.zip](https://cdn.origene.com/chromatograms/mk6561_e11.zip)

**Restriction Sites:** SgfI-MluI

**Cloning Scheme:**

Cloning sites used for ORF Shuttling:



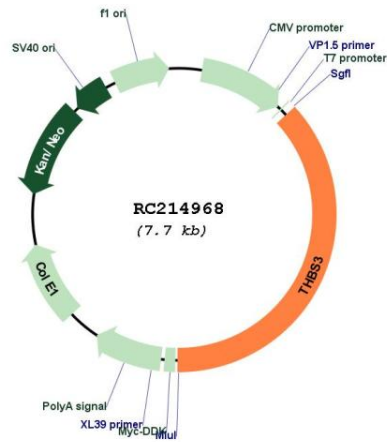
\* The last codon before the Stop codon of the ORF

**ACCN:** NM\_007112

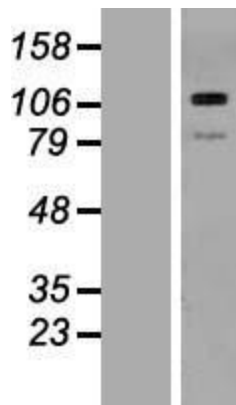
**ORF Size:** 2868 bp

<b>OTI Disclaimer:</b>	The molecular sequence of this clone aligns with the gene accession number as a point of reference only. However, individual transcript sequences of the same gene can differ through naturally occurring variations (e.g. polymorphisms), each with its own valid existence. This clone is substantially in agreement with the reference, but a complete review of all prevailing variants is recommended prior to use. <a href="#">More info</a>
<b>OTI Annotation:</b>	This clone was engineered to express the complete ORF with an expression tag. Expression varies depending on the nature of the gene.
<b>Components:</b>	The ORF clone is ion-exchange column purified and shipped in a 2D barcoded Matrix tube containing 10ug of transfection-ready, dried plasmid DNA (reconstitute with 100 ul of water).
<b>Reconstitution Method:</b>	<ol style="list-style-type: none"><li>1. Centrifuge at 5,000xg for 5min.</li><li>2. Carefully open the tube and add 100ul of sterile water to dissolve the DNA.</li><li>3. Close the tube and incubate for 10 minutes at room temperature.</li><li>4. Briefly vortex the tube and then do a quick spin (less than 5000xg) to concentrate the liquid at the bottom.</li><li>5. Store the suspended plasmid at -20°C. The DNA is stable for at least one year from date of shipping when stored at -20°C.</li></ol>
<b>RefSeq:</b>	<a href="#">NM_007112.5</a>
<b>RefSeq Size:</b>	3251 bp
<b>RefSeq ORF:</b>	2871 bp
<b>Locus ID:</b>	7059
<b>UniProt ID:</b>	<a href="#">P49746</a>
<b>Cytogenetics:</b>	1q22
<b>Protein Families:</b>	Druggable Genome
<b>Protein Pathways:</b>	ECM-receptor interaction, Focal adhesion, TGF-beta signaling pathway
<b>MW:</b>	104.2 kDa
<b>Gene Summary:</b>	The protein encoded by this gene belongs to the thrombospondin family. Thrombospondin family members are adhesive glycoproteins that mediate cell-to-cell and cell-to-matrix interactions. This protein forms a pentameric molecule linked by a single disulfide bond. This gene shares a common promoter with metaxin 1. Alternate splicing results in coding and non-coding transcript variants. [provided by RefSeq, Nov 2011]

Product images:



Circular map for RC214968



Western blot validation of overexpression lysate (Cat# [LY416192]) using anti-DDK antibody (Cat# [TA50011-100]). Left: Cell lysates from untransfected HEK293T cells; Right: Cell lysates from HEK293T cells transfected with RC214968 using transfection reagent MegaTran 2.0 (Cat# [TT210002]).