

Product datasheet for **RC214966**

ECE2 (EEF1AKMT4) (NM_001100120) Human Tagged ORF Clone

Product data:

Product Type:	Expression Plasmids
Product Name:	ECE2 (EEF1AKMT4) (NM_001100120) Human Tagged ORF Clone
Tag:	Myc-DDK
Symbol:	ECE2
Synonyms:	EEF1AKMT4
Mammalian Cell Selection:	Neomycin
Vector:	pCMV6-Entry (PS100001)
E. coli Selection:	Kanamycin (25 ug/mL)



[View online »](#)

ORF Nucleotide Sequence:

>RC214966 representing NM_001100120
 Red=Cloning site Blue=ORF Green=Tags(s)

TTTTGTAATACGACTCACTATAGGGCGGCCGGAATTCGTCGACTGGATCCGGTACCGAGGAGATCTGCC
 GCC**CGGATCGCC**

ATGAACGTCGCGCTGCAGGAGCTGGGAGCTGGCAGCAACATGGTGGAGTACAAACGGGCCACGCTTCGGG
 ATGAAGACGCACCCGAGACCCCCGTAGAGGGCGGGCCCTCCCGGACGCCATGGAGGTGGCAAGGGGGC
 TTCCTTTCTCACCAGGCCCCAGCCCTGGCATGACGCCTGGCACACCCAGGAGCTCTGGCTGTTCTGG
 AGGGTCACCTGCCCCACCTCCGCTCCATCTCTGGCCTCTGCTCTAGGACTATGGTGGGATTCCAGAAGG
 GGACAAGACAGCTGTTAGGCTCACGCACGCAGCTGGAGCTGGTCTTAGCAGGTGCCTCTCTACTGCTGGC
 TGCCTGCTTCTGGGCTGCCTTGTGGCCCTAGGGTCCAGTACCACAGAGACCCATCCACAGCACCTGC
 CTTACAGAGGCCATCGATTGAGTGGCTGGAAAAATCCTGGAGTCCCTGGACCGAGGGGTGAGCCCTGTG
 AGGACTTTTACCAGTTCTCCTGTGGGGCTGGATTTCGGAGGAACCCCTGCCGATGGGCGTTCTCGCTG
 GAACACCTTCAACAGCCTCTGGGACAAAACCAGGCCATACTGAAGCACCTGCTTGA AACACACCTTC
 AACTCCAGCAGTGAAGCTGAGCAGAAGACACAGCGCTTCTACCTATCTTGCTACAGGTGGAGCGCATTG
 AGGAGCTGGGAGCCCAGCCACTGAGAGACCTCATTGAGAAGATTGGTGGTTGGAACATTACGGGGCCCTG
 GGACCAGGACAACCTTTATGGAGGTGTTGAAGGCAGTAGCAGGGACCTACAGGGCCACCCATTCTTACC
 GTCTACATCAGTCCGACTCTAAGAGTTCCAACAGCAATGTTATCCAGGTGGACCACTCTGGGCTTTTC
 TGCCCTCTCGGGATTACTACTTAAACAGAACTGCCAATGAGAAAGTGTCACTGCCTATCTGGATTACAT
 GGAGGAAGTGGGATGCTGCTGGTGGGCGGCCACCTCCACGAGGGAGCAGATGCAGCAGGTGCTGGAG
 TTGGAGATACAGCTGGCAACATCACAGTGGCCAGGACCAGCGCGCAGCAGGAGAAGATCTACCACA
 AGATGAGCAATTCGGAGCTGCAGGCTCTGGCCCTCCATGGACTGGCTTGAGTTCTGCTTTCTTCTG
 GTCACCATTTGGAGTTGAGTGACTCTGAGCTGTGGTGGTGTATGGGATGGATTATTTGCAGCAGGTGTCA
 GAGCTCATCAACCGCACGAACCAAGCATCCTGAACAATTACCTGATCTGGAACCTGGTGA AAAAGACAA
 CCTCAAGCCTGGACCGACGCTTTGAGTCTGCACAAGAGAAGCTGCTGGAGACCCTCTATGGCACTAAGAA
 GTCCTGTGTGCCGAGGTGGCAGACCTGCATCTCCAACACGGATGACGCCCTTGGCTTTGCTTTGGGTCC
 CTCTTCGTAAGGCCACGTTTGACCGCAAAAGCAAAGAAATTGCAGAGGGGATGATCAGCGAAATCCGGA
 CCGCATTTGAGGAGGCCCTGGGACAGCTGGTTTGGATGGATGAGAAGACCCGCCAGGCAGCAAGGAGAA
 AGCAGATGCCATCTATGATATGATTGGTTTCCAGACTTATCCTGGAGCCAAAGAGCTGGATGATGTT
 TATGACGGGTACGAAATTTCTGAAGATTCTTTCTCCAAAACATGTTGAATTTGTACAACCTCTCTGCCA
 AGGTTATGGCTGACCAGCTCCGCAAGCCTCCAGCCGAGACCAGTGGAGCATGACCCCCAGACAGTGAA
 TGCCCTACTACCTCCAAC TAAGAATGAGATCGTCTTCCCGCTGGCATCCTGCAGGCCCCCTTCTATGCC
 CGCAACACCCCAAGGCCTGAACCTCGGTGGCATCGGTGTGGTTCATGGGCCATGAGTTGACGCATGCCCT
 TTGATGACCAAGGGCGCAGATGACAAAGAAGGGAACCTGCGGCCCTGGTGGCAGAATGAGTCCCTGGC
 AGCCTTCCGGAACACACGGCCTGCATGGAGGAACAGTACAATCAATACCAGGTCAATGGGAGAGGCTC
 AACGGCCGCCAGACGCTGGGGGAGAACATTGCTGACAACGGGGGGCTGAAGGCTGCCTACAATGCTTACA
 AAGCATGGCTGAGAAAGCATGGGGAGGAGCAGCAACTGCCAGCCGTGGGGCTCACCAACCACAGCTCTT
 CTTGCTGGGATTTGCCAGGTGTGGTCTCGGTCCGCACACCAGAGAGCTCTCACGAGGGGCTGGTGACC
 GACCCCCACAGCCCTGCCGCTTCCGCGTGTGGGCACTCTCTCCAACCTCCCGTACTTCTGCGGCACT
 TCGGCTGCCCTGTGCGCTCCCCATGAACCCAGGGCAGCTGTGTGAGGTGTGG

ACGCGTACGCGGCCGCTCGAGCAGAACTCATCTCAGAAGAGGATCTGGCAGCAAATGATATCCTGGATT
 ACAAGGATGACGACGATAAGGTTTAA

Protein Sequence: >RC214966 representing NM_001100120
Red=Cloning site Green=Tags(s)

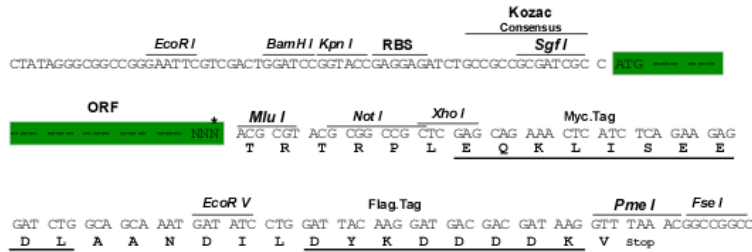
MNVALQELGAGSNMVEYKRATLRDEDAPETPVEGGASPDAMEVGKGASPFSPGSPGMPGTGTPRSSGLFW
RVTCPHLRISIGLCSRMVGFKGTRQLLGSRTQLELVLAGASLLLAALLLGLVALGVQYHRDPSHSTC
LTEACIRVAGKILES LDRGVSPCEDFYQFSCGGWIRRNPLPDGRSRWNTFNSLWDQNQAILKHLLENTTF
NSSSEAEQKTQRFYLSCLQVERIEELGAQPLRDLIEKIGGWNITGPWDQDNFMEVLKAVAGTYRATPFFT
VYISADSKSSNSNVIQVDQSGFLPSRDYYLNRTANEKVL TAYLDYMEELGMLLGGRPTSTREQMQQVLE
LEIQLANITVPQDQRRDEEKIYHKMSISELQALAPSMDWLEFLSFLLSPELSDSEPVVYVYGM DYLQQVS
ELINRTEPSILNNYLIWNLVQKTTSSLDRRFESAQEKLLETLYGTTKSCVPRWQTCISNTDDALGFALGS
LFVKATFDRQSKEIAEGMISEIRTA FEEALGQLVWMDEKTRQAAKEKADAIYDMIGFPDFILEPKELDDV
YDGYEISEDSFFQNMLNLYNFSAKVMADQLRKPPSRDQWSMTPQTVNAYYLP TKNEIVFPAGILQAPFYA
RNHPKALNFGGIGVVMGHELTHAFDDQGREYDKEGNLRPWWQNESLAAFRNHTACMEEQYNQYQVNGERL
NGRQTLGENIADNGGLKAAYNAYKAWLRKHGEEQQLPAVGLTNHQLFFVGF AQVWC SVRTPESSHEGLVT
DPHSPARFRVLGTLSNSRDFLRHFGCPVGSMPMNPGLCEVW

TRTRPLEQKLI SEEDLAANDILDYKDDDDKV

Restriction Sites: Sgfl-MluI

Cloning Scheme:

Cloning sites used for ORF Shutting:



* The last codon before the Stop codon of the ORF

ACCN: NM_001100120

ORF Size: 2433 bp

OTI Disclaimer: The molecular sequence of this clone aligns with the gene accession number as a point of reference only. However, individual transcript sequences of the same gene can differ through naturally occurring variations (e.g. polymorphisms), each with its own valid existence. This clone is substantially in agreement with the reference, but a complete review of all prevailing variants is recommended prior to use. [More info](#)
OTI Annotation: This clone was engineered to express the complete ORF with an expression tag. Expression varies depending on the nature of the gene.

Components: The ORF clone is ion-exchange column purified and shipped in a 2D barcoded Matrix tube containing 10ug of transfection-ready, dried plasmid DNA (reconstitute with 100 ul of water).

Reconstitution Method:

1. Centrifuge at 5,000xg for 5min.
2. Carefully open the tube and add 100ul of sterile water to dissolve the DNA.
3. Close the tube and incubate for 10 minutes at room temperature.
4. Briefly vortex the tube and then do a quick spin (less than 5000xg) to concentrate the liquid at the bottom.
5. Store the suspended plasmid at -20°C. The DNA is stable for at least one year from date of shipping when stored at -20°C.

RefSeq: [NM_001100120.2](#)

RefSeq Size: 3387 bp

RefSeq ORF: 2436 bp

Locus ID: 9718

UniProt ID: [P0DPD6](#)

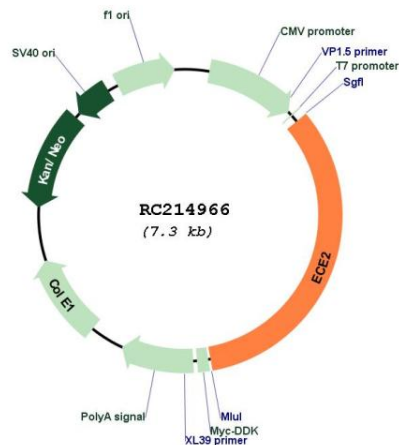
Cytogenetics: 3q27.1

Protein Families: Druggable Genome, Protease, Transmembrane

MW: 91 kDa

Gene Summary: Converts big endothelin-1 to endothelin-1. May also have methyltransferase activity (By similarity). May play a role in amyloid-beta processing (By similarity).[UniProtKB/Swiss-Prot Function]

Product images:



Circular map for RC214966