

## Product datasheet for **RC214965**

### ZNF264 (NM\_003417) Human Tagged ORF Clone

#### Product data:

Product Type:	Expression Plasmids
Product Name:	ZNF264 (NM_003417) Human Tagged ORF Clone
Tag:	Myc-DDK
Symbol:	ZNF264
Mammalian Cell Selection:	Neomycin
Vector:	pCMV6-Entry (PS100001)
E. coli Selection:	Kanamycin (25 ug/mL)



[View online »](#)

**ORF Nucleotide Sequence:**

>RC214965 ORF sequence  
 Red=Cloning site Blue=ORF Green=Tags(s)

TTTTGTAATACGACTCACTATAGGGCGGCCGGAATTCGTCGACTGGATCCGGTACCGAGGAGATCTGCC  
 GCCCGCATCGCC

ATGGCGCAGCGGTGCTGACGGACCGGCCAGGTGTCTGTGACCTTTGATGATGTGGCTGTGACTTTCA  
 CCAAGGAGGAGTGGGGCAGCTGGACCTAGCTCAGCGGACCCTGTACCAGGAGGTGATGCTGAAAACTG  
 TGGCTCCTGGTGTCTCTGGGGTCTCTGTTCCCAAAGCTGAGCTGATCTGCCACCTAGAGCATGGGCAG  
 GAGCCATGGACCAGGAAGGAAGACCTCTCCAAGACACCTGTCCAGGCGACAAAGAAAACCTAAGACCA  
 CAGAACCTACCACTTGTGAGCCAGCCTTGTGAGGGAACTCTCACTTCAGGGACAAGTGACACAAGGAAA  
 CTCAGTGGACTCACAGTTGGGGCAAGCCGAGGATCAGGATGGGCTATCAGAAATGCAGGAAGGACACTTC  
 AGACCAGGAATAGATCCCAGGAGAAGTCTCTGGGAAGATGAGCCCTGAATGTGATGGTTTAGGGACAG  
 CTGATGGTGTGTTCAGGATTGGACAGGAGCAAGTCTCTCAGGAGATACAGTCCATAGCCATAACTC  
 ATGTGAGTCAGGTAAGATCCCATGATTAGGAAGAGGAAAAAATACTTTAAATGCAGTGAATGTGAAAA  
 GTATTTAAACAAGAAACACCTCCTTGGCTGGACATGAGAAAAATCACTCTGGAGTTAAGCCCTATGAATGCA  
 CAGAATGTGGGAAAACCTTTATTAAGAGCACACATCTCCTGCAACATCACATGATCCACACTGGGGAGAG  
 GCCCTATGAGTGCATGGAGTGTGAAAGGCCTTCAACCGCAAGTCATACCTTACCCAGCACCAGCGGATT  
 CACAGTGGAGAGAAGCCTTACAAGTGAATGAATGCGGAAAGGCCTTACCCACCCTCAATTTTGTCT  
 TGCATAACAGGAGACACACTGGAGAAAAATCCTTTGTGTGCACAGAAATGTGGCCAAGTCTTTCGACATAG  
 GCCAGGCTTCTCCGGCACTATGTTGTCCACAGTGGTGAATCCCTATGAGTGCCTGGAGTGTGGCAAG  
 GTCAATGTGGAAAGTCTTCTTGGAGAGTGCAGCCCTGATTCACCACTATGTCATCCACACTGGAGAGAA  
 GCCCTTTGAGTGCCTCGAGTGTGGGAAGGCTTTCAACCACCGATCCTACCTCAAGAGGCACCAGCGGATT  
 CACACTGGGAGAAAGCCCTTCGTGTGAGTGAATGTGAAAGGCCTTACCCACTGCTCTACTTTTATCT  
 TGCATAAAAGGGCCACACTGGAGAAAAGCCTTTCGAGTGCAAAGAGTGTGGAAAGCCTTTAGCAATCG  
 GAAGGACCTCATTGCCACTTCAGCATCCACACTGGAGAGAAGCCCTATGAGTGCCTGGAGTGTGGAAAAG  
 GCCTTACCCGCATGTCGGGCCTCACGAGGCACAAGCGGATTCATAGTGGAGAGAAGCCCTATGAATGTG  
 TTGAGTGTGGAAATCGTTTGTGGAGCACAACCTCATTGACATGCCATTATCCACACTGGAGAGAA  
 GCCCTATAAATGAGTGAATGTGAAAGGCCTTCAGTCGCAGCTCGTCCCTCACTCAGCATCAAAGGATG  
 CATACTGGGAAAAATCCCATCAGTGTAAACAGATGTGGAAAGCCTTTTACAAGTGGACAAAACCTCAGTTA  
 CCCTTCGAGAACTCTTTTAGGGAAGGACTTTTGAATGTAACCACTGAGGCAAAATTTTGCCAGAGGA  
 AACATCTTCTCTGCATCTGATCAACCATACCAAAGAGAAAACCCACAAGTGTCTTCACTG

ACGCGTACGCGGCCGCTCGAGCAGAACTCATCTCAGAAGAGGATCTGGCAGCAAATGATATCCTGGATT  
 ACAAGGATGACGACGATAAGGTTTAA

**Protein Sequence:**

>RC214965 protein sequence  
 Red=Cloning site Green=Tags(s)

MAAAVLTDRAQVSVTFDDVAVTFKKEEWQLDLAQRTRYQEVMLNCGLLVSLGCPVPAELICHLEHQ  
 EPWTRKEDLSQDTPGDKGPKTTEPTTCEPALSEGISLQGVQVQNSVDSQLGQAEDQDGLSEMGEHF  
 RPGIDPQEKSPGKMSPECDELGTADGVCSTRIGQEQVSPGDTVHSHNSCESGKDPMIQEEENFKCSECGK  
 VFNKKHLLAGHEKIHSGVKPYECTECGKTFIKSTHLLQHMIHTGERPYECMECGKAFNRKSYLTQHQR  
 HSGEKPYKCNCEGKAFTHRSNVLHNRHTGEKSFVCTECGQVFRHRPGLRHYVVHSGENPYECLECGK  
 VFKHRSYLMWHQQTHTGEKPYECSECGKVFLESAALIHVYIHTGEKPFECLECGKAFNHRSYLKRHQR  
 HTGEKPFVCEGKAFTHCSTFILHKRAHTGEKPFECGKAFSNRKDLIRHFSIHTGEKPYECSECGK  
 AFTRMSGLTRHKRIHSGEKPYECVCEGKSFCSWSTNLIHAIHTGEKPYKCECGKAFSRSSSLTQHQR  
 HTGKNPISVTDVGRPFTSGQTSVTLRELLLGKDFLNVTTEANILPEETSSASDQPYQRETPQVSSL

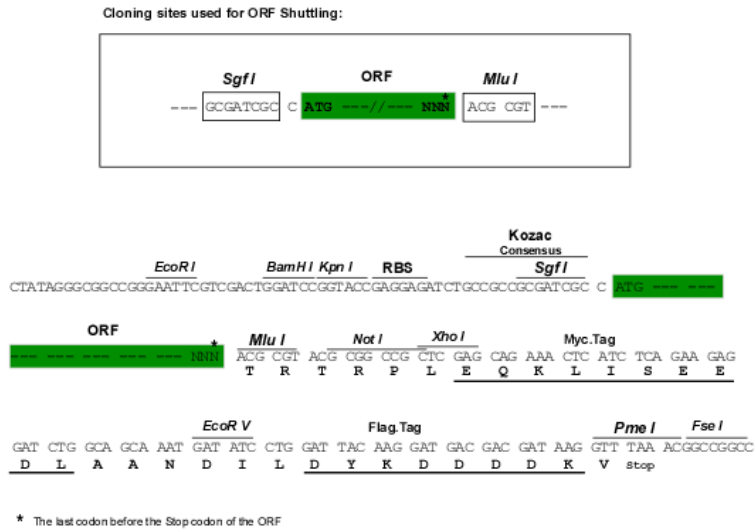
TRTRPLEQKLISEEDLAANDILDYKDDDDKV

**Chromatograms:**

[https://cdn.origene.com/chromatograms/mk6445\\_h10.zip](https://cdn.origene.com/chromatograms/mk6445_h10.zip)

Restriction Sites: SgfI-MluI

Cloning Scheme:



ACCN: NM\_003417

ORF Size: 1881 bp

OTI Disclaimer: The molecular sequence of this clone aligns with the gene accession number as a point of reference only. However, individual transcript sequences of the same gene can differ through naturally occurring variations (e.g. polymorphisms), each with its own valid existence. This clone is substantially in agreement with the reference, but a complete review of all prevailing variants is recommended prior to use. [More info](#)

OTI Annotation: This clone was engineered to express the complete ORF with an expression tag. Expression varies depending on the nature of the gene.

Components: The ORF clone is ion-exchange column purified and shipped in a 2D barcoded Matrix tube containing 10ug of transfection-ready, dried plasmid DNA (reconstitute with 100 ul of water).

Reconstitution Method:

1. Centrifuge at 5,000xg for 5min.
2. Carefully open the tube and add 100ul of sterile water to dissolve the DNA.
3. Close the tube and incubate for 10 minutes at room temperature.
4. Briefly vortex the tube and then do a quick spin (less than 5000xg) to concentrate the liquid at the bottom.
5. Store the suspended plasmid at -20°C. The DNA is stable for at least one year from date of shipping when stored at -20°C.

RefSeq: [NM\\_003417.5](#)

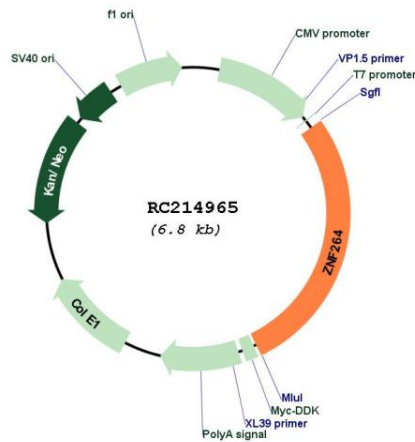
RefSeq Size: 12172 bp

RefSeq ORF: 1884 bp

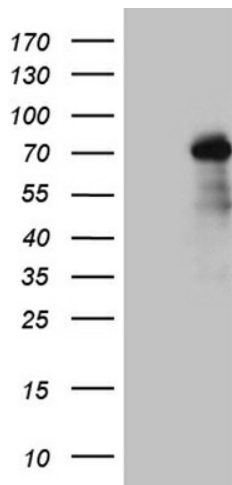
Locus ID: 9422

UniProt ID: [O43296](#)

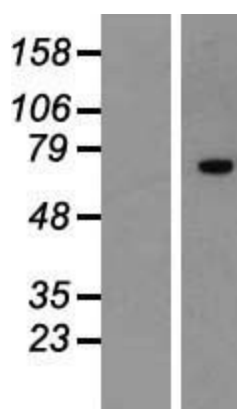
**Cytogenetics:** 19q13.43  
**Domains:** KRAB, zf-C2H2  
**Protein Families:** Transcription Factors  
**MW:** 70.5 kDa  
**Gene Summary:** This gene encodes a zinc finger protein and belongs to the krueppel C2H2-type zinc-finger protein family. Zinc finger proteins are often localized in the nucleus, bind nucleic acids, and regulate transcription. [provided by RefSeq, Jan 2010]

**Product images:**


Circular map for RC214965



HEK293T cells were transfected with the pCMV6-ENTRY control (Cat# [PS100001], Left lane) or pCMV6-ENTRY ZNF264 (Cat# RC214965, Right lane) cDNA for 48 hrs and lysed. Equivalent amounts of cell lysates (5 ug per lane) were separated by SDS-PAGE and immunoblotted with anti-ZNF264 (Cat# [TA810495])(1:2000). Positive lysates [LY418709] (100ug) and [LC418709] (20ug) can be purchased separately from OriGene.



Western blot validation of overexpression lysate (Cat# [LY418709]) using anti-DDK antibody (Cat# [TA50011-100]). Left: Cell lysates from untransfected HEK293T cells; Right: Cell lysates from HEK293T cells transfected with RC214965 using transfection reagent MegaTran 2.0 (Cat# [TT210002]).