

Product datasheet for RC214955

GOSR1 (NM_001007024) Human Tagged ORF Clone

Product data:

Product Type:	Expression Plasmids
Product Name:	GOSR1 (NM_001007024) Human Tagged ORF Clone
Tag:	Myc-DDK
Symbol:	GOSR1
Synonyms:	GOLIM2; GOS-28; GOS28; GOS28/P28; GS28; P28
Mammalian Cell Selection:	Neomycin
Vector:	pCMV6-Entry (PS100001)
E. coli Selection:	Kanamycin (25 ug/mL)
ORF Nucleotide Sequence:	>RC214955 representing NM_001007024 Red=Cloning site Blue=ORF Green=Tags(s)

TTTTGTAATACGACTCACTATAGGGCGGCCGGAATTCGTCGACTGGATCCGGTACCGAGGAGATCTGCC
GCC**CGATCGCC**

ATGGCGGCAGGGACCAGCAGTTACTGGGAAGATCTCAGGAAACAGGCTCGACAGCTGGAAAATGAACTTG
ACCTGAACTAGTTTCCTTCAGCAAATATGTACAAGTTACAGTCATAGCAGTACCCGAGATGGAAGACG
CGACAGGTATAGTTCTGATACAACCCCTTTAAATGGATCAAGCCAAGACAGAATGTTTGAGACAATG
GCGATTGAGATTGAACAACCTTTGGCAAGGCTTACAGGGTAAATGATAAAATGGCAGAATATACCAACA
GTGCAGGTGTCCCTCCTTGAATGCAGCCCTGATGCATACATTACAGCGCATAGAGACATATTGCAGGA
TTATACACATGAATTCCATAAAACCAAAGCAAACCTTTATGGCAATACGGGAAAGGAGAATCTTATGGGA
TCAGTACGAAAAGATATTGAGTCATATAAAAGTGGGTCTGGAGTAAACAACAGAAGAACTGAGCTATTTT
TGAAAGAACATGACCACCTTCGAAACTCAGATCGTCTGATAGAAGAGACAATAAGCATTGCTATGGCAAC
AAAAGAAAATATGACTTCACAGAGAGGAATGTTGAAGTCAATTCACAGCAAAATGAACACTTTGGCCAAT
CGTTTTCTGCTGTAACAGCCTGATCCAGAGGATCAACTGAGGAAGCGGCGGGACTCGCTCATCTAG
GGGTGTTATTGGGATCTGTACCATCTGTTGCTGCTGTATGCGTTCCAT

ACGCGTACGCGGCCGCTCGAGCAGAAACTCATCTCAGAAGAGGATCTGGCAGCAAATGATATCCTGGATT
ACAAGGATGACGACGATAAGGTTTAA



[View online »](#)

Protein Sequence: >RC214955 representing NM_001007024
 Red=Cloning site Green=Tags(s)

MAAGTSSYWEDLRKQARQLENELDLKLVSFSLKCTSYSHSSTRDGRDRYSSDTPLLNGSSQDRMFETM
 AIEIEQLLARLTGVNDKMAEYTNAGVPSLNAALMHTLQRHRDILQDYTHEFHKTKANFMAIRERENLMG
 SVRKDIESYKSGSGVNNRRETELFLKEHDHLRNSDRLIEETISIAMATKENMTSQRGMLKSIHSMNTLAN
 RFPVNSLIQRINLRKRRDLSLILGGVIGICTILLLLLYAFH

TRTRPLEQKLISEEDLAANDILDYKDDDDKV

Chromatograms: https://cdn.origene.com/chromatograms/ja1427_g12.zip

Restriction Sites: SgfI-MluI

Cloning Scheme:

Cloning sites used for ORF Shuttling:



* The last codon before the Stop codon of the ORF

ACCN: NM_001007024

ORF Size: 750 bp

OTI Disclaimer: The molecular sequence of this clone aligns with the gene accession number as a point of reference only. However, individual transcript sequences of the same gene can differ through naturally occurring variations (e.g. polymorphisms), each with its own valid existence. This clone is substantially in agreement with the reference, but a complete review of all prevailing variants is recommended prior to use. [More info](#)

OTI Annotation: This clone was engineered to express the complete ORF with an expression tag. Expression varies depending on the nature of the gene.

Components: The ORF clone is ion-exchange column purified and shipped in a 2D barcoded Matrix tube containing 10ug of transfection-ready, dried plasmid DNA (reconstitute with 100 ul of water).

Reconstitution Method:

1. Centrifuge at 5,000xg for 5min.
2. Carefully open the tube and add 100ul of sterile water to dissolve the DNA.
3. Close the tube and incubate for 10 minutes at room temperature.
4. Briefly vortex the tube and then do a quick spin (less than 5000xg) to concentrate the liquid at the bottom.
5. Store the suspended plasmid at -20°C. The DNA is stable for at least one year from date of shipping when stored at -20°C.

RefSeq Size: 5246 bp

RefSeq ORF: 558 bp

Locus ID: 9527

UniProt ID: [O95249](#)

Cytogenetics: 17q11.2

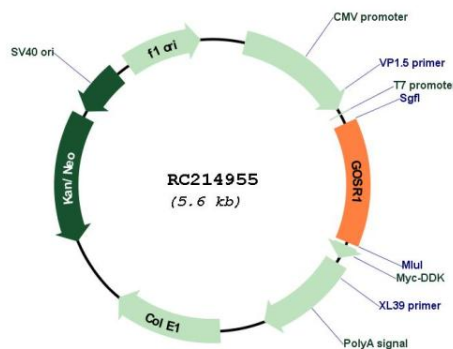
Protein Families: Druggable Genome, Transmembrane

Protein Pathways: SNARE interactions in vesicular transport

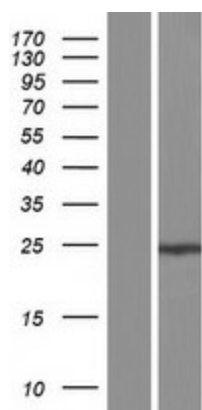
MW: 28.61 kDa

Gene Summary: This gene encodes a trafficking membrane protein which transports proteins among the endoplasmic reticulum and the Golgi and between Golgi compartments. This protein is considered an essential component of the Golgi SNAP receptor (SNARE) complex. Alternatively spliced transcript variants encoding distinct isoforms have been found for this gene. [provided by RefSeq, Jul 2008]

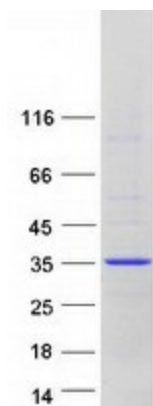
Product images:



Circular map for RC214955



Western blot validation of overexpression lysate (Cat# [LY423566]) using anti-DDK antibody (Cat# [TA50011-100]). Left: Cell lysates from untransfected HEK293T cells; Right: Cell lysates from HEK293T cells transfected with RC214955 using transfection reagent MegaTran 2.0 (Cat# [TT210002]).



Coomassie blue staining of purified GOSR1 protein (Cat# [TP314955]). The protein was produced from HEK293T cells transfected with GOSR1 cDNA clone (Cat# RC214955) using MegaTran 2.0 (Cat# [TT210002]).