

Product datasheet for **RC214953**

EFEMP1 (NM_004105) Human Tagged ORF Clone

Product data:

Product Type:	Expression Plasmids
Product Name:	EFEMP1 (NM_004105) Human Tagged ORF Clone
Tag:	Myc-DDK
Symbol:	EFEMP1
Synonyms:	DHRD; DRAD; EGF-containing fibulin-like extracellular matrix protein 1; FBLN3; FBNL; fibrillin-like; fibulin 3; FLJ35535; MGC111353; MLVT; MTLV; S1-5
Mammalian Cell Selection:	Neomycin
Vector:	pCMV6-Entry (PS100001)
E. coli Selection:	Kanamycin (25 ug/mL)



[View online »](#)

ORF Nucleotide Sequence:

>RC214953 ORF sequence
 Red=Cloning site Blue=ORF Green=Tags(s)

TTTTGTAATACGACTCACTATAGGGCGGCCGGGAATTCGTCGACTGGATCCGGTACCGAGGAGATCTGCC
 GCC**CGGATCGCC**

ATGTTGAAAGCCCTTTCTAATATGCTGACTCTGGCGTGGTCAAGTACAGGACACCGAAGAAACCA
 TCACGTACACGCAATGCACTGACGGATATGAGTGGGATCCTGTGAGACAGCAATGCAAAGATATTGATGA
 ATGTGACATTGTCCCAGACGCTTGTAAAGTGGAAATGAAGTGTGTCAACCACTATGGAGGATACCTCTGC
 CTTCCGAAAACAGCCAGATTATTGTCAATAATGAACAGCCTCAGCAGGAAACACAACCAGCAGAAGGAA
 CCTCAGGGGAACACCGGGTGTAGCTGCCAGCAGCATGGCAACCACTGGAGTGTGCCCGGGGTGG
 TTTTGTGGCCAGTGTCTGCAGTCGCAGGCCCTGAAATGCAGACTGGCCGAAATAACTTTGTATCCGG
 CGGAACCCAGCTGACCCTCAGCGCATTCCCTCAAACCTTCCCACCGTATCCAGTGTGCAGCAGGCTACG
 AGCAAAGTGAACACAACGTGTGCAAGACATAGACGAGTGCAGTGCAGGGACGCACAACCTGTAGAGCAGA
 CCAAGTGTGCATCAATTTACGGGATCCTTTGCATGTGAGTGCCTCCTGGATATCAGAAGCGAGGGGAG
 CAGTGCCTAGACATAGATGAATGTACCATCCCTCCATATTGCCACCAAAGATGCGTGAATACACCAGGCT
 CATTATTGCCAGTGCAGTCTGGGTTCAATTGGCAGCAAACAACCTATACCTGCGTAGATATAAATGA
 ATGTGATGCCAGCAATCAATGTGCTCAGCAGTGTACAACATTCTTGGTTCATTCTGTGAGTGCAT
 CAAGGATATGAGCTAAGCAGTGCAGGCTCAACTGTGAAGACATTGATGAATGCAGAACCTCAAGCTACC
 TGTGTCAATATCAATGTGCAATGAACCTGGGAAATCTCATGTATGTGCCCCAGGGATACCAAGTGGT
 GAGAAGTAGAACATGTCAAGATAAATGAGTGTGAGACCACAAATGAATGCCGGGAGGATGAAATGTGT
 TGAATTATCATGGCGCTTCCGTTGTTATCCACGAAATCCTGTCAAGATCCCTACATTCTAACACCAG
 AGAACCGATGTGTTTGGCCAGTCTCAAATGCCATGTGCCGAGAAGTGGCCAGTCAATAGTCTACAATA
 CATGAGCATCCGATCTGATAGGCTGTGCCATCAGACATCTTCCAGATACAGGCCACAACCTATTTATGCC
 AACACCATCAATACTTTTCGATTAAATCTGAAATGAAATGGAGAGTTCTACCTACGACAAAACAAGTC
 CTGTAAGTGAATGCTTGTGCTCGTGAAGTCATTATCAGGACCAAGAGAACATATCGTGGACCTGGAGAT
 GCTGACAGTCAGCAGTATAGGGACCTTCCGCACAAGCTCTGTGTTAAGATTGACAATAATAGTGGGGCCA
 TTTTCATTT

ACGCGTACGCGGCCGCTCGAGCAGAAACTCATCTCAGAAGAGGATCTGGCAGCAAATGATATCCTGGATT
 ACAAGGATGACGACGATAAGGTTTAA

Protein Sequence:

>RC214953 protein sequence
 Red=Cloning site Green=Tags(s)

MLKALFLTMLTLALVKSQDTEETITYTQCTDGYEWDVPVRQCKDIDECDIVPDACKGGMKCVNHYYGGLC
 LPKTAQIIVNNEQPQETQPAEGTSGATTGVVAASSMATSGVLPGGGFVASAAVAGPEMQTGRNNFVIR
 RNPADPQRIPSNPSHRIQCAAGYEQSEHNVCQDIDECTAGTHNCRADQVCINLRGSFACQPPGYQKRGE
 QCVDIDECTIPPYCHQRCVNTPGSFYQCSPGFQLAANNYTCVDINECDASNQCAQQCYNILGSFICQCN
 QGYELSSDRLNCEDIDECRTSSYLQYQCVNEPGKFSMCPQGYQVRSRTCQDINECETTNECREDEMC
 WNYHGGFRYPRNPCQDPYILTPENRCVCPVSNAMCRELPQSIVYKYSIRSRSVPSDIFQIQATTIYA
 NTINTFRIKSGNENGEFYLRQTSFVSAMLVLVKSLSGPREHIVDLEMLTVSSIGTFRTSSVLRLTIIVGP
 FSF

TRTRPLEQKLISEEDLAANDILDYKDDDDKV

Chromatograms:

https://cdn.origene.com/chromatograms/mk6453_b05.zip

Restriction Sites:

Sgfl-Mlul

Cloning Scheme:


ACCN: NM_004105

ORF Size: 1479 bp

OTI Disclaimer: The molecular sequence of this clone aligns with the gene accession number as a point of reference only. However, individual transcript sequences of the same gene can differ through naturally occurring variations (e.g. polymorphisms), each with its own valid existence. This clone is substantially in agreement with the reference, but a complete review of all prevailing variants is recommended prior to use. [More info](#)

OTI Annotation: This clone was engineered to express the complete ORF with an expression tag. Expression varies depending on the nature of the gene.

Components: The ORF clone is ion-exchange column purified and shipped in a 2D barcoded Matrix tube containing 10ug of transfection-ready, dried plasmid DNA (reconstitute with 100 ul of water).

- Reconstitution Method:**
1. Centrifuge at 5,000xg for 5min.
 2. Carefully open the tube and add 100ul of sterile water to dissolve the DNA.
 3. Close the tube and incubate for 10 minutes at room temperature.
 4. Briefly vortex the tube and then do a quick spin (less than 5000xg) to concentrate the liquid at the bottom.
 5. Store the suspended plasmid at -20°C. The DNA is stable for at least one year from date of shipping when stored at -20°C.

Note: Plasmids are not sterile. For experiments where strict sterility is required, filtration with 0.22um filter is required.

RefSeq: [NM_004105.3](#)

RefSeq Size: 2936 bp

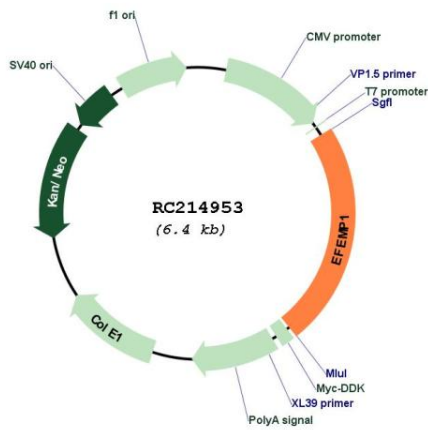
RefSeq ORF: 1481 bp

Locus ID: 2202

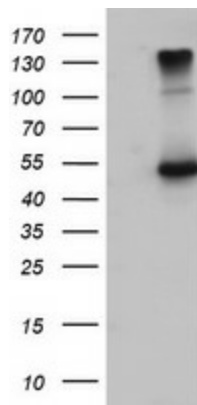
Cytogenetics: 2p16.1
Domains: EGF_CA, EGF, EGF
Protein Families: Secreted Protein
MW: 54.6 kDa

Gene Summary: This gene encodes a member of the fibulin family of extracellular matrix glycoproteins. Like all members of this family, the encoded protein contains tandemly repeated epidermal growth factor-like repeats followed by a C-terminus fibulin-type domain. This gene is upregulated in malignant gliomas and may play a role in the aggressive nature of these tumors. Mutations in this gene are associated with Doyme honeycomb retinal dystrophy. Alternatively spliced transcript variants that encode the same protein have been described. [provided by RefSeq, Nov 2009]

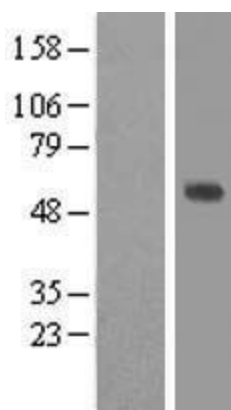
Product images:



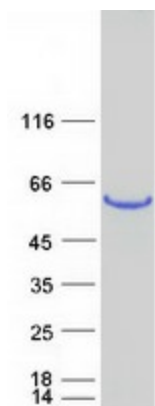
Circular map for RC214953



HEK293T cells were transfected with the pCMV6-ENTRY control (Cat# [PS100001], Left lane) or pCMV6-ENTRY EFEMP1 (Cat# RC214953, Right lane) cDNA for 48 hrs and lysed. Equivalent amounts of cell lysates (5 ug per lane) were separated by SDS-PAGE and immunoblotted with anti-EFEMP1 (Cat# [TA503772]). Positive lysates [LY418212] (100ug) and [LC418212] (20ug) can be purchased separately from OriGene.



Western blot validation of overexpression lysate (Cat# [LY418212]) using anti-DDK antibody (Cat# [TA50011-100]). Left: Cell lysates from untransfected HEK293T cells; Right: Cell lysates from HEK293T cells transfected with RC214953 using transfection reagent MegaTran 2.0 (Cat# [TT210002]).



Coomassie blue staining of purified EFEMP1 protein (Cat# [TP314953]). The protein was produced from HEK293T cells transfected with EFEMP1 cDNA clone (Cat# RC214953) using MegaTran 2.0 (Cat# [TT210002]).