

Product datasheet for **RC214950**

SOCS5 (NM_014011) Human Tagged ORF Clone

Product data:

Product Type:	Expression Plasmids
Product Name:	SOCS5 (NM_014011) Human Tagged ORF Clone
Tag:	Myc-DDK
Symbol:	SOCS5
Synonyms:	CIS6; Cish5; CISH6; SOCS-5
Mammalian Cell Selection:	Neomycin
Vector:	pCMV6-Entry (PS100001)
E. coli Selection:	Kanamycin (25 ug/mL)



[View online »](#)

ORF Nucleotide Sequence:

>RC214950 representing NM_014011
 Red=Cloning site Blue=ORF Green=Tags(s)

TTTTGTAATACGACTCACTATAGGGCGGCCGGAATTCGTCGACTGGATCCGGTACCGAGGAGATCTGCC
 GCC**CGCATCGCC**

ATGGATAAAGTGGAAAAATGTGGAATAACTTCAAATACAGGTGTCAGAATCTCTTCGGTCATGAGGGAG
 GAAGCCGTAGTAAAAATGTGGACATGAACTCCAACAGATGTTTGTCTGTCAAAGAGAAAAACATCAGCAT
 AGGAGACTCAACTCCTCAGCAACAAAGCAGTCCCTTAAGAGAAAAATTGCCTTACAACCTGGGATTAAGC
 CCTTCGAAGAATTCTTCAAGGAGAAATCAAATTTGTGCCACAGAAATCCCTCAAATTTGTTGAAATAAGCA
 TCGAAAAGGATAATGATTCTTGTGTTACCCAGGAACAAGACTTGCACGAAGAGATTCTACTCTCGACA
 TGCTCCATGGGGTGGGAAGAAAAACATTCCTGTTCTACAAGACCCAGAGTTCATTGGATGCTGATAAA
 AAGTTTGGTAGAACTCGAAGTGGACTTCAAAGGAGAGAGAGGCGCTACGGCGTAAGTTCTGTACACGACA
 TGGACAGTGTTCAGCAGAAGTGTAGGAAGTCGCTCTCTAAGACAGAGGTTGCAGGATACTGTGGGCTT
 GTGTTTTCCCATGAGAATTACAGCAAGCAGTCAAAGCCTCTCTTTTCCAATAAAAGAAAAATCCATCTC
 TCTGAATTAATGCTTGAGAAATGCCCTTTTCTGCTGGCTCAGATTTAGCCCAAAAATGGCATTGATTA
 AACAGCATACAGCTCCTGTGAGCCACATTCAACATTTTTTATACATTTGATCCATCTTTGGTTTCTAC
 AGAAGATGAAGAAGATAGGCTTAGAGAGAGAAGGCGGCTTAGTATTGAAGAAGGGGTTGATCCCCCTCCC
 AATGCACAAAATACATACATTTGAAGTACTGCACAGGTTAATCCATTATATAAACTGGGACCAAAATTAG
 CTCCTGGAATGACTGAAATAAGTGGGACAGTTTCTGCAATTCACAAGCTAATTGTGACTCGGAAGAGGA
 TACAACCCCTGTGTTTGCAGTACGGAGGCAGAAGCAGCGTCAGATATCTGGAGACAGCCATACGCAT
 GTTAGCAGACAGGGAGCTTGGAAAGTCCACACACAGATTGATTACATACACTGCCTCGTGCCTGATTTGC
 TTCAAATTACAGGGAATCCCTGTTACTGGGGAGTGTGACCGTTATGAAGCAGAAGCCCTTCTCGAAGG
 GAAACCTGAAGGCACGTTTTTGTCTCAGGACTCTGCGCAAGAGGACTACCTCTTCTGTGAGCTTCCGC
 CGCTACAACAGATCCCTGCATGCCCGAATTGAGCAGTGAATCACAACCTTATGTTTCGACGCCCATGACC
 CGTGTGATTTCACTCCTCCACTGTAACGGGACTTTTAGAACATTATAAAGATCCCAGTTCGTGCATGTT
 TTTTGAACCATTGCTTACTATATCACTAAATAGGACTTCCCTTTTAGCCTGCAGTATATCTGTCGCGCG
 GTAATCTGCAGGTGCACTACGTATGATGGAATTGATGGGCTCCCTCTACCTCAATGTTACAGGATTTTT
 TAAAGAGTATCATTATAAACAAAAAGTTAGAGTTCGCTGGTTGGAACGAGAACCAGTCAAGGCAAAG

ACGCGTACGCGGCCGCTCGAGCAGAAACTCATCTCAGAAGAGGATCTGGCAGCAAATGATATCCTGGATT
 ACAAGGATGACGACGATAAGGTTTAA

Protein Sequence:

>RC214950 representing NM_014011
 Red=Cloning site Green=Tags(s)

MDKVGKMWNFKYRCQNLFGHEGGRSENVDMNSNRCLSVKEKNISIGDSTPQQQSSPLRENIALQLGLS
 PSKNSSRRNQNCATEIPQIVEISIEKDNDCVTPGTRLARRDSYSRHAPWGGKKKHSCSTKTQSSLDADK
 KFGRTSRGLQRRERRYGVSSVHDMDSVSSRTVGSRSRQRLQDTVGLCFPMRTYSKQSKPLFSNKRKIHL
 SELMLEKCPFPAGSDLAQKWHLIKQHTAPVSPHSTFFDTFDPSTLSTEDDEEDRLRERRRLSIEEGVDP
 NAQIHTFEATAQVNPLYKLGPKLAPGMTEISGDSSAIPQANCDSEEDTTTLCLQSRQKQRQISGDSHTH
 VSRQGAWKVHTQIDYIHCLVPDLLQITGNPCYWGVMRDYEAELLEGKPEGTFLLRDSAQEDYLFVSFR
 RYNRSLHARIEQWNHNSFDAHDPCVHSSVTGLLEHYKDPSSCMFFPELLTISLNRTFPFSLQYICRA
 VICRCTTYDGIDGLPLPSMLQDFLKEYHYKQKVRVRLEREPVKAK

TRTRPLEQKLISEEDLAANDILDYKDDDDKV

Chromatograms:

https://cdn.origene.com/chromatograms/mk6205_g04.zip

Restriction Sites:

Sgfl-MluI

Cloning Scheme:

ACCN: NM_014011

ORF Size: 1608 bp

OTI Disclaimer: Due to the inherent nature of this plasmid, standard methods to replicate additional amounts of DNA in E. coli are highly likely to result in mutations and/or rearrangements. Therefore, OriGene does not guarantee the capability to replicate this plasmid DNA. Additional amounts of DNA can be purchased from OriGene with batch-specific, full-sequence verification at a reduced cost. Please contact our customer care team at custsupport@origene.com or by calling 301.340.3188 option 3 for pricing and delivery.

The molecular sequence of this clone aligns with the gene accession number as a point of reference only. However, individual transcript sequences of the same gene can differ through naturally occurring variations (e.g. polymorphisms), each with its own valid existence. This clone is substantially in agreement with the reference, but a complete review of all prevailing variants is recommended prior to use. [More info](#)

OTI Annotation: This clone was engineered to express the complete ORF with an expression tag. Expression varies depending on the nature of the gene.

Components: The ORF clone is ion-exchange column purified and shipped in a 2D barcoded Matrix tube containing 10ug of transfection-ready, dried plasmid DNA (reconstitute with 100 ul of water).

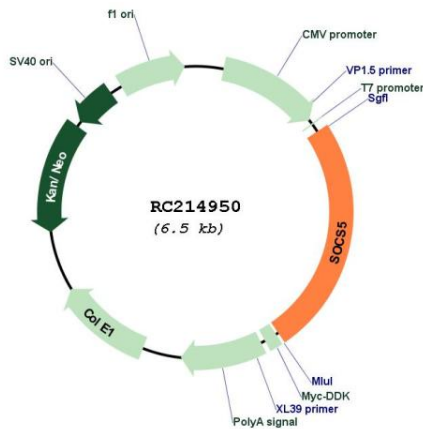
- Reconstitution Method:**
1. Centrifuge at 5,000xg for 5min.
 2. Carefully open the tube and add 100ul of sterile water to dissolve the DNA.
 3. Close the tube and incubate for 10 minutes at room temperature.
 4. Briefly vortex the tube and then do a quick spin (less than 5000xg) to concentrate the liquid at the bottom.
 5. Store the suspended plasmid at -20°C. The DNA is stable for at least one year from date of shipping when stored at -20°C.

RefSeq: [NM_014011.4](#), [NP_054730.1](#)

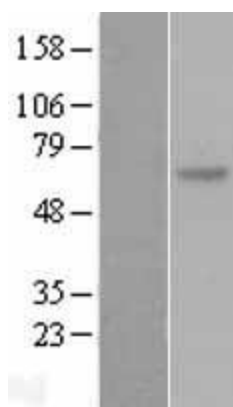
RefSeq Size: 4422 bp
RefSeq ORF: 1611 bp
Locus ID: 9655
UniProt ID: [O75159](#)
Cytogenetics: 2p21
Domains: SH2, SOCS
Protein Families: Druggable Genome
Protein Pathways: Jak-STAT signaling pathway
MW: 61.1 kDa

Gene Summary: The protein encoded by this gene contains a SH2 domain and a SOCS BOX domain. The protein thus belongs to the suppressor of cytokine signaling (SOCS) family, also known as STAT-induced STAT inhibitor (SSI) protein family. SOCS family members are known to be cytokine-inducible negative regulators of cytokine signaling. The specific function of this protein has not yet been determined. Two alternatively spliced transcript variants encoding an identical protein have been reported. [provided by RefSeq, Jul 2008]

Product images:



Circular map for RC214950



Western blot validation of overexpression lysate (Cat# [LY402267]) using anti-DDK antibody (Cat# [TA50011-100]). Left: Cell lysates from untransfected HEK293T cells; Right: Cell lysates from HEK293T cells transfected with RC214950 using transfection reagent MegaTran 2.0 (Cat# [TT210002]).