

Product datasheet for **RC214947**

CT45A1 (NM_001017417) Human Tagged ORF Clone

Product data:

Product Type: Expression Plasmids
Product Name: CT45A1 (NM_001017417) Human Tagged ORF Clone
Tag: Myc-DDK
Symbol: CT45A1
Synonyms: CT45; CT45-1; CT45.1
Mammalian Cell Selection: Neomycin
Vector: pCMV6-Entry (PS100001)
E. coli Selection: Kanamycin (25 ug/mL)
ORF Nucleotide Sequence: >RC214947 representing NM_001017417
Red=Cloning site Blue=ORF Green=Tags(s)

TTTTGTAATACGACTCACTATAGGGCGCCGGGAATTCGTCGACTGGATCCGGTACCGAGGAGATCTGCC
GCC**CGATCGCC**

ATGACCGATAAAACAGAGAAGGTGGCTGTAGATCCTGAACTGTGTTAAACGTCCAGGGAATGTGACA
GTCCTTCGTATCAGAAAAGGCAGAGGATGGCCCTGTTGGCAAGGAAACAAGGAGCAGGAGACAGCCTTAT
TGCAGGCTCTGCCATGTCCAAAGAAAAGAAGCTTATGACAGGACATGCTATTCCACCCAGCCAATTGGAT
TCTCAGATTGATGACTTCACTGGTTTCAGCAAAGATAGGATGATGCAGAAACCTGGTAGCAATGCACCTG
TGGGAGGAAACGTTACCAGCAGTTTCTCTGGAGATGACCTAGAATGCAGAGAAACAGCCTCCTCTCCCAA
AAGCCAACGAGAAATTAATGCTGATATAAAACGTAATTAAGTGAAGGAACTCCGATGCGTTGGACAAAAA
TATGAAAAATCTTCGAAATGCTTGAAGGAGTGAAGGACCTACTGCAGTCAGGAAGCGATTTTTTGAAT
CCATCATCAAGGAAGCAGCAAGATGTATGAGACGAGACTTTGTTAAGCACCTTAAGAAGAACTGAAACG
TATGATT

ACGCGTACGCGGCCGCTCGAGCAGAACTCATCTCAGAAGAGGATCTGGCAGCAATGATATCCTGGATT
ACAAGGATGACGACGATAAGGTTTAA

Protein Sequence: >RC214947 representing NM_001017417
Red=Cloning site Green=Tags(s)

MTDKTEKVAVDPETVFKRPRECDSPSYQKRQRMALLARKQGAGDSLIIAGSAMSKEKLMTGHAIPPSQLD
SQIDDFTGFSKDRMMQKPGSNAPVGGNVTSSFSGDLECRETASSPKSQREINADIKRKLVKELRCVQKQ
YEKIFEMLEGVQGPTAVRKRFFESIIEAARCMRRDFVKHLKKLKRMI

TRTRPLEQKLISEEDLAANDILDYKDDDDKV



[View online »](#)

Chromatograms: https://cdn.origene.com/chromatograms/ja1433_b04.zip

Restriction Sites: SgfI-MluI

Cloning Scheme:



ACCN: NM_001017417

ORF Size: 567 bp

OTI Disclaimer: The molecular sequence of this clone aligns with the gene accession number as a point of reference only. However, individual transcript sequences of the same gene can differ through naturally occurring variations (e.g. polymorphisms), each with its own valid existence. This clone is substantially in agreement with the reference, but a complete review of all prevailing variants is recommended prior to use. [More info](#)

OTI Annotation: This clone was engineered to express the complete ORF with an expression tag. Expression varies depending on the nature of the gene.

Components: The ORF clone is ion-exchange column purified and shipped in a 2D barcoded Matrix tube containing 10ug of transfection-ready, dried plasmid DNA (reconstitute with 100 ul of water).

Reconstitution Method:

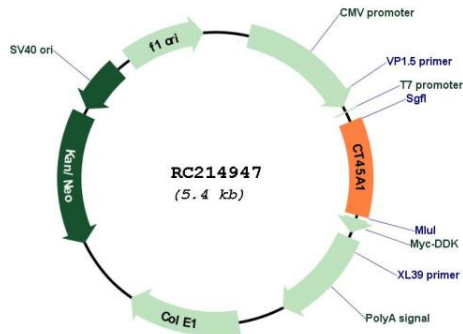
1. Centrifuge at 5,000xg for 5min.
2. Carefully open the tube and add 100ul of sterile water to dissolve the DNA.
3. Close the tube and incubate for 10 minutes at room temperature.
4. Briefly vortex the tube and then do a quick spin (less than 5000xg) to concentrate the liquid at the bottom.
5. Store the suspended plasmid at -20°C. The DNA is stable for at least one year from date of shipping when stored at -20°C.

Note: Plasmids are not sterile. For experiments where strict sterility is required, filtration with 0.22um filter is required.

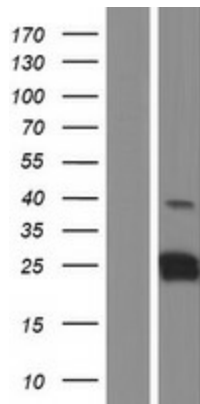
RefSeq: [NM_001017417.2](#), [NP_001017417.1](#)

RefSeq Size: 1008 bp

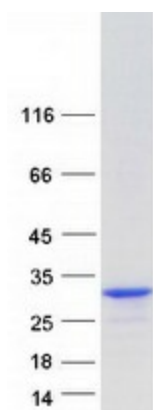
RefSeq ORF: 570 bp
 Locus ID: 541466
 UniProt ID: [Q5HYN5](#)
 Cytogenetics: Xq26.3
 MW: 21.1 kDa

Product images:


Circular map for RC214947



Western blot validation of overexpression lysate (Cat# [LY422786]) using anti-DDK antibody (Cat# [TA50011-100]). Left: Cell lysates from untransfected HEK293T cells; Right: Cell lysates from HEK293T cells transfected with RC214947 using transfection reagent MegaTran 2.0 (Cat# [TT210002]).



Coomassie blue staining of purified CT45A1 protein (Cat# [TP314947]). The protein was produced from HEK293T cells transfected with CT45A1 cDNA clone (Cat# RC214947) using MegaTran 2.0 (Cat# [TT210002]).