

## Product datasheet for **RC214944**

### **TROY (TNFRSF19) (NM\_018647) Human Tagged ORF Clone**

#### **Product data:**

Product Type:	Expression Plasmids
Product Name:	TROY (TNFRSF19) (NM_018647) Human Tagged ORF Clone
Tag:	Myc-DDK
Symbol:	TROY
Synonyms:	TAJ; TAJ-alpha; TRADE; TROY
Mammalian Cell Selection:	Neomycin
Vector:	pCMV6-Entry (PS100001)
E. coli Selection:	Kanamycin (25 ug/mL)



[View online »](#)

**ORF Nucleotide Sequence:**

>RC214944 representing NM\_018647  
 Red=Cloning site Blue=ORF Green=Tags(s)

TTTTGTAATACGACTCACTATAGGGCGGCCGGAATTCGTCGACTGGATCCGGTACCGAGGAGATCTGCC  
 GCC**CGATCGCC**

ATGGCTTTAAAAGTGCTACTAGAACAAAGAGAAAACGTTTTTCACTCTTTTACTAGGCTATTTGT  
 CATGTAAGTGACTTGTGAATCAGGAGACTGTAGACAGCAAGAATTCAGGGATCGGTCTGAAAACCTGTG  
 TCCTGCAACCAGTGTGGGCCAGGCATGGAGTTGTCTAAGGAATGTGGCTTCGGCTATGGGAGGATGCA  
 CAGTGTGTGACGTGCCGGCTGCACAGGTTCAAGGAGGACTGGGGCTTCCAGAAATGCAAGCCCTGTCTGG  
 ACTGCCAGTGGTGAACCGCTTTCAGAAGGCAAATTTGTCAGCCACCAGTGATGCCATCTCGGGGACTG  
 CTTGCCAGGATTTTATAGGAAGACGAACTTGTGCGCTTCAAGACATGGAGTGTGTGCCTTGTGGAGAC  
 CCTCTCTCTTACGAACCGACTGTGCCAGCAAGGTC AACCTCGTGAAGATCGCGTCCACGGCCTCCA  
 GCCACGGGACACGGCGTGGCTGCCGTTATCTGCAGCGCTTGCCACCCTGCTGGCCCTGCTCAT  
 CCTCTGTGTCTATTGTAAGAGACAGTTTATGGAGAAGAAACCCAGCTGGTCTCTGCGGTACAGGAC  
 ATTCAGTACAACGGCTCTGAGCTGTCGTGTTTTGACAGACCTCAGCTCCAGCAATATGCCACAGAGCCT  
 GCTGCCAGTGCCCGCTGACTCAGTGCAGACCTGCGGGCCGGTGCCTTCTCCATCCATGTGCTGTGA  
 GGAGGCCCTGCAGCCCAACCCGGCGACTTTGGTTGTGGGGTGCATTCTGCAGCCAGTCTTCAGGCAAGA  
 AACGCAGGCCAGCCGGGGAGATGGTGCCGACTTCTTCGGATCCCTCACGCAGTCCATCTGTGGCGAGT  
 TTTTCAAGTGCCTGGCCTCTGATGCAAAATCCATGGGTGGTGACAACATCTTTTTTGTGACTCTTATCC  
 TGAAGTCACTGGAGAAGACATTCATTCTCTCAATCCAGAACTTGAAGCTCAACGCTTTGGATTCAAAT  
 AGCAGTCAAGATTTGGTTGGTGGGGCTGTTCCAGTCCAGTCTCATTCTGAAAACCTTACAGCAGCTACTG  
 ATTTATCTAGATATAACAACACTGGTAGAATCAGCATCAACTCAGGATGCACTAACTATGAGAAGCCA  
 GCTAGATCAGGAGAGTGGCGCTGTATCCACCCAGCCACTCAGACGTCCCTCCAGGTAAGGCAGCGACTG  
 GTTCCCTG

**ACGCGT**ACGCGGCCGCTCGAGCAGAACTCATCTCAGAAGAGGATCTGGCAGCAAATGATATCCTGGATT  
 ACAAGGATGACGACGATAAGGTTTAA

**Protein Sequence:**

>RC214944 representing NM\_018647  
 Red=Cloning site Green=Tags(s)

MALKVLLQEKTFFLLVLLGYLSCKVTCESGDCRQQEFRDRSGNCVPCNQCGPMELSKCEGFGYGEDA  
 QCVTCRLHRFKEDWGFQCKPCLDCAVVNRFQKANC SATSDAICGDCLPGFYRKTCLVGFQDMCEVPCGD  
 PPPPYEPHCASKVNLVKIASTASSPRDTALAAVICSALATVLLALLILCVIYCKRQFMEKKPSWLSRSQD  
 IQYNGSELSCFDRPQLHEYAHRACCQCRSDSVQTCGPVRLLPSCCCEACSPNPATLGC VHSAA SLQAR  
 NAGPAGEMVPTFFGSLTQSI CGEFSDAWPLMQNPMGGDNISFCDSYPELTGEDIHSLNPELESSTSLDSN  
 SSQDLVGGAVPVQSHSENF TAATDL SRYNNTLVESASTQDAL TMRSQLDQESGAVIHPATQTS LQVRQL  
 GSL

**TR**TRPLEQKLISEEDLAANDILDYKDDDDKV

**Chromatograms:**

[https://cdn.origene.com/chromatograms/mk6097\\_c03.zip](https://cdn.origene.com/chromatograms/mk6097_c03.zip)

**Restriction Sites:**

Sgfl-Mlul

**Cloning Scheme:**


**ACCN:** NM\_018647

**ORF Size:** 1269 bp

**OTI Disclaimer:** The molecular sequence of this clone aligns with the gene accession number as a point of reference only. However, individual transcript sequences of the same gene can differ through naturally occurring variations (e.g. polymorphisms), each with its own valid existence. This clone is substantially in agreement with the reference, but a complete review of all prevailing variants is recommended prior to use. [More info](#)

**OTI Annotation:** This clone was engineered to express the complete ORF with an expression tag. Expression varies depending on the nature of the gene.

**Components:** The ORF clone is ion-exchange column purified and shipped in a 2D barcoded Matrix tube containing 10ug of transfection-ready, dried plasmid DNA (reconstitute with 100 ul of water).

**Reconstitution Method:**

1. Centrifuge at 5,000xg for 5min.
2. Carefully open the tube and add 100ul of sterile water to dissolve the DNA.
3. Close the tube and incubate for 10 minutes at room temperature.
4. Briefly vortex the tube and then do a quick spin (less than 5000xg) to concentrate the liquid at the bottom.
5. Store the suspended plasmid at -20°C. The DNA is stable for at least one year from date of shipping when stored at -20°C.

**RefSeq:** [NM\\_018647.5](#)

**RefSeq Size:** 1485 bp

**RefSeq ORF:** 1272 bp

**Locus ID:** 55504

**UniProt ID:** [Q9NS68](#)

**Cytogenetics:** 13q12.12

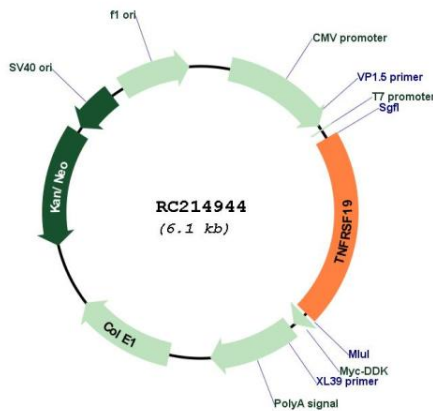
**Protein Families:** Druggable Genome, Transmembrane

**Protein Pathways:** Cytokine-cytokine receptor interaction

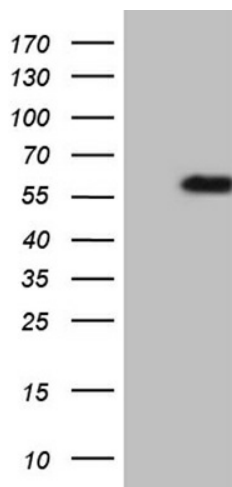
**MW:** 42.7 kDa

**Gene Summary:** The protein encoded by this gene is a member of the TNF-receptor superfamily. This receptor is highly expressed during embryonic development. It has been shown to interact with TRAF family members, and to activate JNK signaling pathway when overexpressed in cells. This receptor is capable of inducing apoptosis by a caspase-independent mechanism, and it is thought to play an essential role in embryonic development. Alternatively spliced transcript variants encoding distinct isoforms have been described. [provided by RefSeq, Jul 2008]

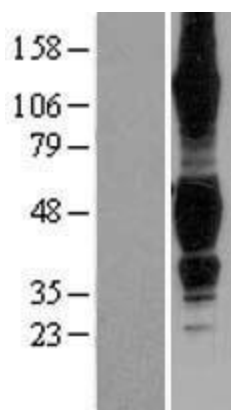
**Product images:**



Circular map for RC214944



HEK293T cells were transfected with the pCMV6-ENTRY control (Cat# [PS100001], Left lane) or pCMV6-ENTRY TNFRSF19 (Cat# RC214944, Right lane) cDNA for 48 hrs and lysed. Equivalent amounts of cell lysates (5 ug per lane) were separated by SDS-PAGE and immunoblotted with anti-TNFRSF19 (Cat# [TA810325])(1:2000). Positive lysates [LY402704] (100ug) and [LC402704] (20ug) can be purchased separately from OriGene.



Western blot validation of overexpression lysate (Cat# [LY402704]) using anti-DDK antibody (Cat# [TA50011-100]). Left: Cell lysates from untransfected HEK293T cells; Right: Cell lysates from HEK293T cells transfected with RC214944 using transfection reagent MegaTran 2.0 (Cat# [TT210002]).