

## Product datasheet for RC214935

### C16orf72 (NM\_014117) Human Tagged ORF Clone

#### Product data:

Product Type:	Expression Plasmids
Product Name:	C16orf72 (NM_014117) Human Tagged ORF Clone
Tag:	Myc-DDK
Symbol:	C16orf72
Synonyms:	PRO0149
Mammalian Cell Selection:	Neomycin
Vector:	pCMV6-Entry (PS100001)
E. coli Selection:	Kanamycin (25 ug/mL)
ORF Nucleotide Sequence:	>RC214935 ORF sequence Red=Cloning site Blue=ORF Green=Tags(s)

TTTTGTAATACGACTCACTATAGGGCGGCCGGAATTCGTCGACTGGATCCGGTACCGAGGAGATCTGCC  
GCC**CGATCGCC**

ATGGAGGAGCGGAAGGAGGGGCGAGGCCGAGATCCAGGAGCACGGGCCGAGCACTGGTTCTCCAAGT  
GGGAGCGGCAGTGCCTGGCCGAGGCCGAACAGGACGAGCAGCTGCCCCCGAGCTGCAGGAGGAGGCGGC  
GGCCGCCGCGCAGCCGAGCACAAGCAGCAGAAGCTGTGGCACCTTCCAGAACTCGGCCACCGCCGTG  
GCCAGCTCTACAAAGACCGAGTGTGTCAGCAGCCAGGACTTTCTCTCTGGGTCCCCTTCCAAAACGCAG  
CCACCGCCGTACCAATCTCTACAAAGAAAGCGTGGATACCCATCAACGAAGTTTGATATTGGAATTCA  
GATTGGCTATCAGCGACGCAATAAGGATGTGTTGGCTTGGTTAAAAACGCAGAAGAAGTATTCGTCGA  
GAAGATTTGATCAGCTTCTGTGTGAAAAGTTCTCCACCACGAACTCTAGAGCTCCCCAAGACTGA  
CTGTAGTGTCCCCTAACCGAGCTACTTCAACGAAAAGTCTCATCTGTAGAGACTGATTTGCAACCCCTT  
CCGGGAAGCCATAGCTCTGCATGGTCTTAGTGGTGCAATGGCTAGTATAAGCGTGCCTTCGAGTACCCCA  
GGCTCTCTACACATGTAAGCAGTGGATCGAATGCTAGTCGAAGGAGAAATGGACTCCATGATGTCGATT  
TGAACACTTTTATATCAGAAGAAATGGCACTCCACTTGGACAATGGTGGAACTAGAAAGCGTACCTCAGC  
CCAGTGTGGCGATGTCATTACAGACTCACCAACCCATAAACGCAACAGAATGATC

**ACGCGT**ACGCGGCCGCTCGAGCAGAAACTCATCTCAGAAGAGGATCTGGCAGCAAATGATATCCTGGATT  
ACAAGGATGACGACGATAAGGTTTAA



[View online »](#)

**Protein Sequence:** >RC214935 protein sequence  
Red=Cloning site Green=Tags(s)

MEERKEEGEAEIQEHGPEHWF SKWERQCLAEAEQDEQLPPELQEEAAAAA QPEHKQKQLWHLFQNSATAV  
 AQLYKDRVCQQPGLSLWVPFQNAATAVTNLYKESVDTHQRSFDIGIQIGYQRRNKDVLAWVKRRRTIRR  
 EDLISFLCGKVPVPPRNSRAPRRLTVVSPNRATSTETSSSVETDLQPFREAIALHGLSGAMASISVRSSTP  
 GSPTHVSSGSNASRRRNLHDVDLNTFISEEMALHLDNGGTRKRTSAQCGDVIDTSPTHKRNMI

TRTRPLEQKLISEEDLAANDILDYKDDDDKV

**Chromatograms:** [https://cdn.origene.com/chromatograms/mk6461\\_d09.zip](https://cdn.origene.com/chromatograms/mk6461_d09.zip)

**Restriction Sites:** SgfI-MluI

**Cloning Scheme:**



**ACCN:** NM\_014117

**ORF Size:** 825 bp

**OTI Disclaimer:** The molecular sequence of this clone aligns with the gene accession number as a point of reference only. However, individual transcript sequences of the same gene can differ through naturally occurring variations (e.g. polymorphisms), each with its own valid existence. This clone is substantially in agreement with the reference, but a complete review of all prevailing variants is recommended prior to use. [More info](#)

**OTI Annotation:** This clone was engineered to express the complete ORF with an expression tag. Expression varies depending on the nature of the gene.

**Components:** The ORF clone is ion-exchange column purified and shipped in a 2D barcoded Matrix tube containing 10ug of transfection-ready, dried plasmid DNA (reconstitute with 100 ul of water).

**Reconstitution Method:**

1. Centrifuge at 5,000xg for 5min.
2. Carefully open the tube and add 100ul of sterile water to dissolve the DNA.
3. Close the tube and incubate for 10 minutes at room temperature.
4. Briefly vortex the tube and then do a quick spin (less than 5000xg) to concentrate the liquid at the bottom.
5. Store the suspended plasmid at -20°C. The DNA is stable for at least one year from date of shipping when stored at -20°C.

**RefSeq:** [NM\\_014117.3](#)

**RefSeq Size:** 3996 bp

**RefSeq ORF:** 828 bp

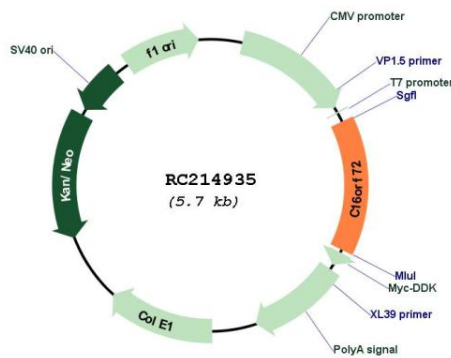
**Locus ID:** 29035

**UniProt ID:** [Q14CZ0](#)

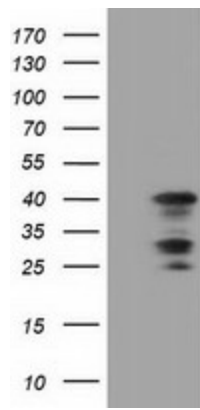
**Cytogenetics:** 16p13.2

**MW:** 30.9 kDa

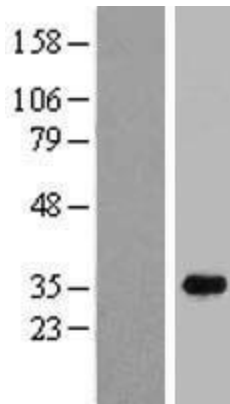
**Product images:**



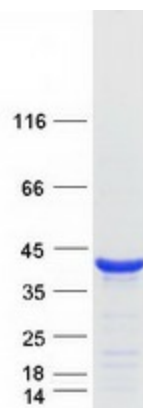
Circular map for RC214935



HEK293T cells were transfected with the pCMV6-ENTRY control (Cat# [PS100001], Left lane) or pCMV6-ENTRY C16orf72 (Cat# RC214935, Right lane) cDNA for 48 hrs and lysed. Equivalent amounts of cell lysates (5 ug per lane) were separated by SDS-PAGE and immunoblotted with anti-C16orf72(Cat# [TA501514]). Positive lysates [LY415486] (100ug) and [LC415486] (20ug) can be purchased separately from OriGene.



Western blot validation of overexpression lysate (Cat# [LY415486]) using anti-DDK antibody (Cat# [TA50011-100]). Left: Cell lysates from untransfected HEK293T cells; Right: Cell lysates from HEK293T cells transfected with RC214935 using transfection reagent MegaTran 2.0 (Cat# [TT210002]).



Coomassie blue staining of purified C16orf72 protein (Cat# [TP314935]). The protein was produced from HEK293T cells transfected with C16orf72 cDNA clone (Cat# RC214935) using MegaTran 2.0 (Cat# [TT210002]).