

Product datasheet for **RC214934**

UBE2E1 (NM_182666) Human Tagged ORF Clone

Product data:

Product Type: Expression Plasmids
Product Name: UBE2E1 (NM_182666) Human Tagged ORF Clone
Tag: Myc-DDK
Symbol: UBE2E1
Synonyms: UBCH6
Mammalian Cell Selection: Neomycin
Vector: pCMV6-Entry (PS100001)
E. coli Selection: Kanamycin (25 ug/mL)
ORF Nucleotide Sequence: >RC214934 representing NM_182666
Red=Cloning site Blue=ORF Green=Tags(s)

TTTTGTAATACGACTCACTATAGGGCGCCGGGAATTCGTCGACTGGATCCGGTACCGAGGAGATCTGCC
GCC**CGGATCGCC**

ATGTCGGATGACGATTTCGAGGGCCAGCACCAGCTCCTCCTCATCTTCGTCTTCCAACCAGCAAACCGAGA
AAGAAACAACACCCCAAGAAGAAGGAGAGTAAAGTCAGCATGAGCAAAAACCTCAAACCTCTCCAC
CAGCGCCAAGAGTGTGGTCCCAAAGCGATAACATCTATGAATGGAGATCAACCATTCTAGGGCTCCA
GGATCCGTGTATGAGGGTGTATTCTTCTCGATATCACTTTTACACCAGAATATCCCTTCAAGCCTC
CAAAGTTACATTCGGACAAGAATCTATCATTGTAATATTAACAGTCAAGGTGTTATTTGCTTGGACAT
ATTGAAAGATAATTGGAGTCCAGCACTAACATTTCTAAAGTCCCTTTCTATCTGCTCACTTCTTACA
GACTGTAATCCTGCCGCCCTTGGTGGGAAGTATTGCCACTCAGTATATGACCAACAGAGCAGAACATG
ACAGAATGGCCAGACAGTGGACCAAGAGATACGCTACA

ACGCGTACGCGGCCGCTCGAGCAGAAACTCATCTCAGAAGAGGATCTGGCAGCAATGATATCCTGGATT
ACAAGGATGACGACGATAAGGTTTAA

Protein Sequence: >RC214934 representing NM_182666
Red=Cloning site Green=Tags(s)

MSDDDSRASTSSSSSSSNQQTEKETNTPKKKESKVSMSKNSKLLSTSAKSAGPKGDNIYEWRSITLGGP
GSVYEGGVFFLDITFTPEYFPKPKVTFRTRIIYHCNINSQGVICLDILKDNWSPALTIKVLISICLLT
DCNPADPLVGSIAIQYMTNRAEHRMARQWTKRYAT

TRTRPLEQKLISEEDLAANDILDYKDDDDKV

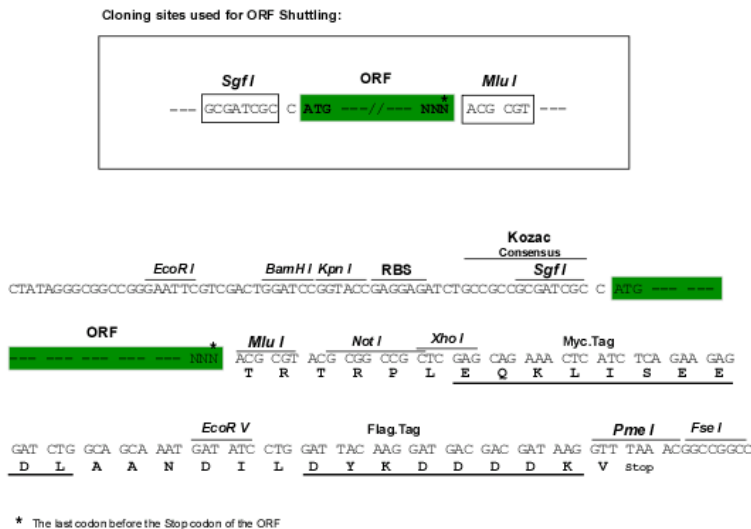
Chromatograms: https://cdn.origene.com/chromatograms/mk8027_e07.zip



[View online »](#)

Restriction Sites: SgfI-MluI

Cloning Scheme:



ACCN: NM_182666

ORF Size: 528 bp

OTI Disclaimer: The molecular sequence of this clone aligns with the gene accession number as a point of reference only. However, individual transcript sequences of the same gene can differ through naturally occurring variations (e.g. polymorphisms), each with its own valid existence. This clone is substantially in agreement with the reference, but a complete review of all prevailing variants is recommended prior to use. [More info](#)

OTI Annotation: This clone was engineered to express the complete ORF with an expression tag. Expression varies depending on the nature of the gene.

Components: The ORF clone is ion-exchange column purified and shipped in a 2D barcoded Matrix tube containing 10ug of transfection-ready, dried plasmid DNA (reconstitute with 100 ul of water).

Reconstitution Method:

1. Centrifuge at 5,000xg for 5min.
2. Carefully open the tube and add 100ul of sterile water to dissolve the DNA.
3. Close the tube and incubate for 10 minutes at room temperature.
4. Briefly vortex the tube and then do a quick spin (less than 5000xg) to concentrate the liquid at the bottom.
5. Store the suspended plasmid at -20°C. The DNA is stable for at least one year from date of shipping when stored at -20°C.

RefSeq: [NM_182666.3](#)

RefSeq Size: 1428 bp

RefSeq ORF: 531 bp

Locus ID: 7324

UniProt ID: [P51965](#)

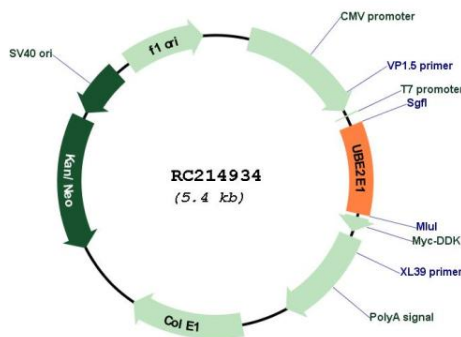
Cytogenetics: 3p24.2

Protein Pathways: Ubiquitin mediated proteolysis

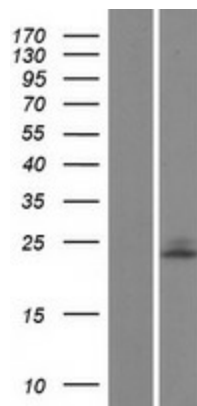
MW: 19.3 kDa

Gene Summary: The modification of proteins with ubiquitin is an important cellular mechanism for targeting abnormal or short-lived proteins for degradation. Ubiquitination involves at least three classes of enzymes: ubiquitin-activating enzymes, or E1s, ubiquitin-conjugating enzymes, or E2s, and ubiquitin-protein ligases, or E3s. This gene encodes a member of the E2 ubiquitin-conjugating enzyme family. Three alternatively spliced transcript variants encoding distinct isoforms have been found for this gene. [provided by RefSeq, Jan 2011]

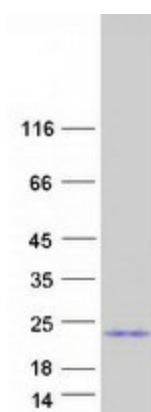
Product images:



Circular map for RC214934



Western blot validation of overexpression lysate (Cat# [LY405441]) using anti-DDK antibody (Cat# [TA50011-100]). Left: Cell lysates from untransfected HEK293T cells; Right: Cell lysates from HEK293T cells transfected with RC214934 using transfection reagent MegaTran 2.0 (Cat# [TT210002]).



Coomassie blue staining of purified UBE2E1 protein (Cat# [TP314934]). The protein was produced from HEK293T cells transfected with UBE2E1 cDNA clone (Cat# RC214934) using MegaTran 2.0 (Cat# [TT210002]).