

Product datasheet for RC214926

RIZ1 (PRDM2) (NM_001007257) Human Tagged ORF Clone

Product data:

Product Type: Expression Plasmids
Product Name: RIZ1 (PRDM2) (NM_001007257) Human Tagged ORF Clone
Tag: Myc-DDK
Symbol: PRDM2
Synonyms: HUMHOXY1; KMT8; KMT8A; MTB-ZF; RIZ; RIZ1; RIZ2
Vector: pCMV6-Entry (PS100001)
E. coli Selection: Kanamycin (25 ug/mL)
Cell Selection: Neomycin
ORF Nucleotide Sequence: >RC214926 representing NM_001007257
Red=Cloning site Blue=ORF Green=Tags(s)

TTTTGTAATACGACTCACTATAGGGCGGCCGGAATTCGTCGACTGGATCCGGTACCGAGGAGATCTGCC
GCC**CGGATCGCC**

ATGAGAGATTCTGCAGAAGTCTCTAAAGAAGACGAAGAGAAGCCTTCAGCCTCAGCACTTGAGCAGCCGG
CCACCTCCAGGAGGTGGCCAGTCAGGAGTGCCTCCAGAAGTAGCAACCCCTGCCCTGCCTGGGAGCC
ACAGCCAGAACCAGACGAGCGATTAGAAGCGGCAGCTTGTGAGGTGAATGATTTGGGGAAGAGGAGGAG
GAGGAAGAGGAGGAGGATGAAGAAGAAGAAGAAGATGATGATGATGATGATTGGAAGACGAGGGGGAAG
AAGAAGCCAGCATGCCAAATGAAATTTCTGTGAAAGAGCCAGAAATACGGTGTGATGAGAAGCCAGAAGA
TTTATTAGAGGAACCAAAAAACAACCTTCAGAAGAACTCTTGAAGACTGCTCAGAGGTAACACCTGCCATG
CAAATCCCAGAACTAAAGAAGAGGCCAATGGTGTGATTTTGAACGTTATGTTTTCCGTGTCAACATT
GTGAAAGGAAGTTTACAACCAACAGGGGCTTGAGCGTCACATGCATATCCATATATCCACCGTCAATCA
TGCTTTCAAATGCAAGTACTGTGGGAAAGCCTTGGCACACAGATTAACCGCGGCGACATGAGCGGCGC
CATGAAGCAGGGTTAAAGCGGAAACCCAGCCAAACACTACAGCCGTCAGAGGATCTGGCTGATGGCAAAG
CATCTGGAGAAAACGTTGCTTCAAAGATGATTCGAGTCTCCAGTCTTGGCCAGACTGTCTGATCAT
GAATTCAGAGAAGGCTTCCAAGACACAATAAATTTCTTGTCTGTAAGAAGAAATGGGGAAGTTAAAGAA
CTTCATCCGTGCAAATATTGTAAGGTTTTTGGAACTCATACTAATATGAGACGGCATCAGCGTAGAG
TTCACGAACGTCTCTGATTTCCAAAGGTGTACGGCGAAAAGGAGGCCCTTGAAGAGCCCCAGCCTCCAGC
AGAACAGGCCAGGCCACCCAGAAGCTGTATGTACCAAGCACAGAGCCGGAGGAGGAAGGGGAAGCAGAT
GATGTGTACATCATGGACATTTCTAGCAATATCTCTGAAAACCTAAATTAATTAATTTGATGGTAAATTC
AAACTAATAACAACACTAGTAACTGTGATGTGATTGAGATGGAGTCTGCTTCGGCAGATTTGTATGGTAT
AAATTGTCTGCTCACTCCAGTTACAGTGGAAATTAATAAATAAAGACCACACAGGTCCTGTAAACA
GAAGATCTTCTAAAGAGCCTTTGGGCAGCACAATAAGTGAAGCAAGAAGCGGAGAAGTCTGAGCCAC
CTGCACTGCCAAATTAAGGCCGAAACAGACTCTGACCCATGTTCCCTCTTGTCTTTAAGTCTTCC
TCTTAGCATATCAACAACAGAGGAGTGTCTTTCCACAAAGAGAAAGTGTTTATTTGTCATCAAAGCTC
AAACAACCTTCTCAAACCAAGATAAACTAACTCCTGCAGGGATTCAGCAACTGAAATAGCTAAATTAG



[View online »](#)

GTCTGTGGTGTCTGCTCCTGCATCAATGTTGCCTGTGACCTCAAGTAGGTTAAGAGGCGGACCAG
CTCTCCTCCCAGTTCTCCACAGCACAGTCTGCCCTTCGAGACTTTGGAAAGCCAAGTGATGGGAAAGCA
GCATGGACCGATGCCGGGCTGACTTCCAAAAATCCAAATTAGAAAGTCACAGCGACTCACCAGCATGGA
GTTTGTCTGGGAGAGATGAGAGAGAAACTGTGAGCCCTCCATGCTTTGATGAATATAAAATGTCTAAAGA
GTGGACAGCTAGTTCTGCTTTTAGCAGTGTGTGCAACCAGCAGCCACTGGATTTATCCAGCGGTGTCAA
CAGAAGGCTGAGGGTACAGGCAAGACTCCAGTCCAGTGGGAATCTGTCTTAGATCTAGTGTGCATAAAA
AGCATTGTAGTGACTCTGAAGGCAAGGAATCAAAGAAAGTCATTCAAGTGCAGCCTACGTGTAGTGTGT
AAAGAAAAGGAAACCAACCCTGCATGCTGCAGAAGGTTCTTCTCAATGAATATAATGGCATCGATTTA
CCTGTAGAAAACCTGCAGATGGGACCAGGAGCCCAAGTCTTGTAAATCCCTAGAAAGCTCAGCCAGATC
CTGACCTCGGTCCGGGCTCTGGTTCCCTGCCCTACTGTTGAGTCCACACCTGATGTTTGTCTTCATC
ACCTGCCCTGCAGACACCCTCCCTTTCATCCGGTCAAGTGCCTCCTCTTGTATCCCCACAGATCCCTCT
TCCCCTCCACCCTGTCCCCGGTATTAAGTGTGCCACTCCGCCCTCCCTCCTTCTACCGTACCTC
TCCAGCCCCCTTCCAGTGCATCTCCACACCATGCCCTCTCCACTCTCAAATGCCACCGCACAGTC
CCCCTTCCAATTCTGTCCCAACAGTGTCCCCCTCCTCCTCCATTCTCCCGTGGAGCCCCGATG
TCTGCCGCTCACCCGGGCTCCAACACTTCTTCTCCTCCTCTCATCTTCTCCTCCTTCTCGTTTT
CTTCTTCACTTCTCCTTCTCCTTCTCCACCTCCTCTCTCCGAATATCATCTGTTGTTTCTCCTG
TGATAATCTGGAGGCTTCTCTCCCATGATATCTTTCAAACAGGAGGAATTAGAGAATGAAGGTCTGAAA
CCCAGGGAAGAGCCCCAGTCTGCTGCTGAACAGGATGTTGTTGTTGTTGTTGTTGTTGTTGTTGTTG
TTTGAACGTCTGTGAATCACCTTTTCTTCCATTAAGATCTAACCAAACTTTATCTATTCATGCTGA
AGAATGGCCCTCAAATGTGAATTTTGTGTGACGCTTTTAAAGGATAAAACGGACTTGTGAGAATCGC
TTTTTGTCTATGGAGTTGGGAATATCTTGTGTGTTCTGTTGTAAAAAAGAAATTTGCTTTTTTGTGCA
ATTTGCAGCAGCACCAGCGAGATCTCCACCCAGATAAGGTGTGCACACATCAGAGTTTGAAGCGGGAC
TCTGAGGCCCCAGAAGTTACAGATCCCAGCAAGGCCATGTAGAGCATATGCAGAGTGTCCAGAAAGAT
CCTTTAGAAACTTCTAAAGAAGAAGAGGAGTTAAATGATTCTCTGAAGAGCTTTACACGACTATAAAAA
TAATGGCTTCTGGAATAAAGACAAAAGATCCAGATGTTGATTGGGCCTCAATCAGCATTACCCAAGCTT
TAAACCACCTCCATTTAGTACCATCACCGTAACCCCATGGGGATTGGTGTGACAGCCACAAATTTCACT
ACACACAATATCCACAGACTTTCACTACCGCCATTGCTGCACAAAGTGTGGAAAAGGTGTGACAATA
TGCCGGAGTTGCACAAACATATCCTGGCTTGTGCTTCTGCAAGTGAAGAAGAGGTACACGCCTAAGAA
AAACCCAGTACCATTAACAAACTGTGCAACCCAAAAATGGCGTGGTGGTTTTAGATAACTCTGGGAAA
AATGCCTCCGACGAATGGGACAGCCAAAAGGCTTAACTTTAGTGTGAGCTCAGCAAAATGTCGTCGA
ATAAGCTCAAATTAATGCATTGAAGAAAAAAATCAGCTAGTACAGAAAGCAATTTCTCAGAAAAACAA
ATCTGCAAAGCAGAAGGCCGACTTGAAAAATGCTTGTGAGTCATCCTCTCACATCTGCCCTTACTGTAAT
CGAGAGTTCACATTACATTGGAAGCCTGAATAAACACGCCGCTTCAAGTGTCCAAAAAACCCCTTCTC
CTCCAAAAAAAAGTTTCTCATTATCTAAGAAAGGTGGACACTCATCACCTGCAAGTAGTGACAAAAA
CAGTAACAGCAACCACCGCAGACGGACAGCGGATGCGGAGATTAAGTGAAGCATGCAGACTCCGTTG
GGCAAGACCAGAGCCCGCAGCTCAGGCCCAACCAAGTCCCACTTCCCTCCTCATCTCAGGTCCAAGC
AGAACGTCAAGTTTGCAGCTTCCGTGAAATCCAAAAACCAAGCTCCTCCTTTTAAAGAACTCCAGCCC
GATAAAGAAATGGCCAAAATAACTCATGTTGAGGGAAAAAACCTAAAGCTGTGGCCAAGAATCATTCTGCT
CAGCTTTCCAGCAAAACATCACGGAGCCTGCACGTGAGGGTACAGAAAAGCAAGCTGTTTTACAAAGCA
AATCCACCTTGGCGAGTAAGAAAAGAAGACAGCCGTTCAATATAAAATCTAGAGAGCGGAGTGGGGGCC
AGTCACCCGAGCCTTCAAGTGGCAGCTGCTGCTGACTTGAAGTGAAGAACAGAGAGAGGACGGCAGCGCC
AAGCAGGAGCTGAAGACTTCAGGAATTCCTG

ACGCGTACGCGGCCGCTCGAGCAGAACTCATCTCAGAAGAGGATCTGGCAGCAATGATATCCTGGATT
ACAAGGATGACGACGATAAGGTTTAA

Protein Sequence: >RC214926 representing NM_001007257
 Red=Cloning site Green=Tags(s)

```
MRDSAEGPKEDEEKPSASALEQPATLQEVASQEVPELATPAPAWEPQPEPDERLEAAACEVNDLGEEEE
EEEEDEEEEEEDDDDELEDEGEEEEASMPNENSVKEPEIRCDEKPEDLLEPKTTSEETLEDCSEVTPAM
QIPRTKEEANGDVFETFMFPCQHCERKFTTKQGLERHMHIIHISTVNHAFKCKYCGKAFGTQINRRRHERR
HEAGLKRKPSQTLQPSDELADGKASGENVASKDDSSPPLGPDCLIMNSEKASQDTINSSVVEENGEVKE
LHPCKYCKKVFVGTHTNMRRHQRRVHERHLIPKGVRRKGGLEEQPPAEQAQATQNVVYVVPSTEPEEEGEAD
DVYIMDISSNISENLNYYIDGKIQTNNNTSNCVDIEMESASADLYGINCLLLTPVTVEITQNIKTTQVPVT
EDLPKEPLGSTNSEAKKRRRTASPPALPKIKAETSDPMVPCSLSLPLSISTTEAVSFHKEKSVYLSKSL
KQLLQTQDKLTPAGISATEIAKLGPVCSAPASMLPVTSSRFKRRRTSSPPSPQHSPALRDFGKPSDGKA
AWTDAGLTSKSKLESHSDSPAWSL SGRDERETVSPPCFDEYKMSKEWTASSAFSSVCNQQLDLSSGVK
QKAEGTGKTPVQWESVLDL SVHKKHCSDSEGKFKESHVQPTCSAVKKRKP TTCMLQKVLLNEYNGIDL
PVENPADGTRSPSPCKSLEAQPDPDLGPGSGFPAPTVESTPDVCPSSPALQTPSLSSGQLPPLL IPTDPS
SPPPCPPVLTVA PPPPLLPTVPLPAPSSASPHPCPSPLSNATAQSPLPILSPTVSPSPSIPPVEPLM
SAASPGPPTLSSSSSSSSSSSSSSSSSSSSSSSPPPPLSATSSVSSGDNLEASLPMISFKQELENEGLK
PREEPQSAAEQDVVVQETFNKNFVCNVCEPFLSIKDLTKHLSIHAEWPFKCEFCVQLFKDKTDLSEHR
FLLHGVGNIFVCSVCKKEFAFLCNLQQHQDLHPDKVCTHHEFESGTLRPQNFTDPSKAHVEHMQSLPED
PLETSKEEEELNDSSEELYTTIKIMASGIKTKDPVRLGLNQHYPSFKPPPFQYHHRNPMGIGVTA TNFT
THNIPQTFTTAIRCTKCGKGVNDNMP ELHKHILACASADKKRYTPKKNPVPLKQTVQPKNGVVLDNSGK
NAFRRMGQPKRLNFSVELSKMSSNKLKLNALKKKNQLVQKAILQKNKSAKQKADLKNACESSSHICPYCN
REFTYIGSLNKHAAF SCPKKPLSPPKKK VSHSSKKGHSSPASSDKNSNSNHRRTADAEIKMQSMQTP
GKTRARSSGPTQVPLPSSSFRSKQNVKFAASVKSKK PSSSLRNSSPIRMAKITHVEGKKPKAVAKNHSA
QLSSKTSRSLHVRVQKSKAVLQSKSTLASKRTRDRFNKSRERSGGPVTRSLQLAAAADLSENKREDGSA
KQELKDFRNFL
```

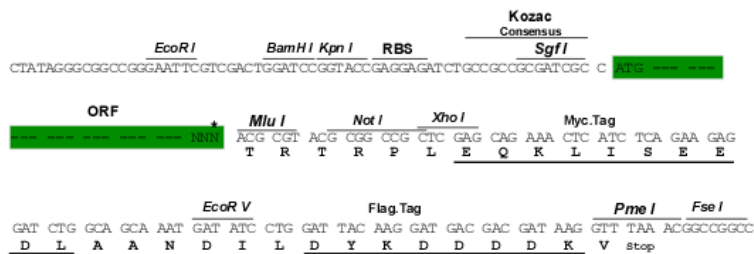
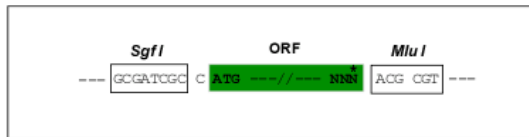
TRTRPLEQKLISEEDLAANDILDYKDDDDKV

Restriction Sites:

SgfI-MluI

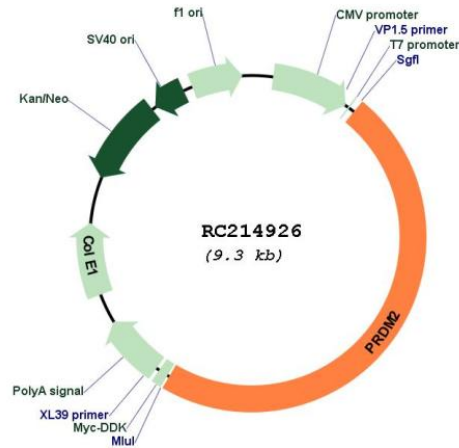
Cloning Scheme:

Cloning sites used for ORF Shuttling:



* The last codon before the Stop codon of the ORF

Plasmid Map:



ACCN: NM_001007257

ORF Size: 4443 bp

OTI Disclaimer: The molecular sequence of this clone aligns with the gene accession number as a point of reference only. However, individual transcript sequences of the same gene can differ through naturally occurring variations (e.g. polymorphisms), each with its own valid existence. This clone is substantially in agreement with the reference, but a complete review of all prevailing variants is recommended prior to use. [More info](#)

OTI Annotation: This clone was engineered to express the complete ORF with an expression tag. Expression varies depending on the nature of the gene.

Components: The ORF clone is ion-exchange column purified and shipped in a 2D barcoded Matrix tube containing 10ug of transfection-ready, dried plasmid DNA (reconstitute with 100 ul of water).

Reconstitution Method:

1. Centrifuge at 5,000xg for 5min.
2. Carefully open the tube and add 100ul of sterile water to dissolve the DNA.
3. Close the tube and incubate for 10 minutes at room temperature.
4. Briefly vortex the tube and then do a quick spin (less than 5000xg) to concentrate the liquid at the bottom.
5. Store the suspended plasmid at -20°C. The DNA is stable for at least one year from date of shipping when stored at -20°C.

RefSeq: [NM_001007257.3](#)

RefSeq Size: 6206 bp

RefSeq ORF: 4446 bp

Locus ID: 7799

UniProt ID: [Q13029](#)

Cytogenetics: 1p36.21

Protein Families: Druggable Genome

MW: 162.1 kDa

Gene Summary: This tumor suppressor gene is a member of a nuclear histone/protein methyltransferase superfamily. It encodes a zinc finger protein that can bind to retinoblastoma protein, estrogen receptor, and the TPA-responsive element (MTE) of the heme-oxygenase-1 gene. Although the functions of this protein have not been fully characterized, it may (1) play a role in transcriptional regulation during neuronal differentiation and pathogenesis of retinoblastoma, (2) act as a transcriptional activator of the heme-oxygenase-1 gene, and (3) be a specific effector of estrogen action. Multiple transcript variants encoding different isoforms have been found for this gene. [provided by RefSeq, Oct 2008]